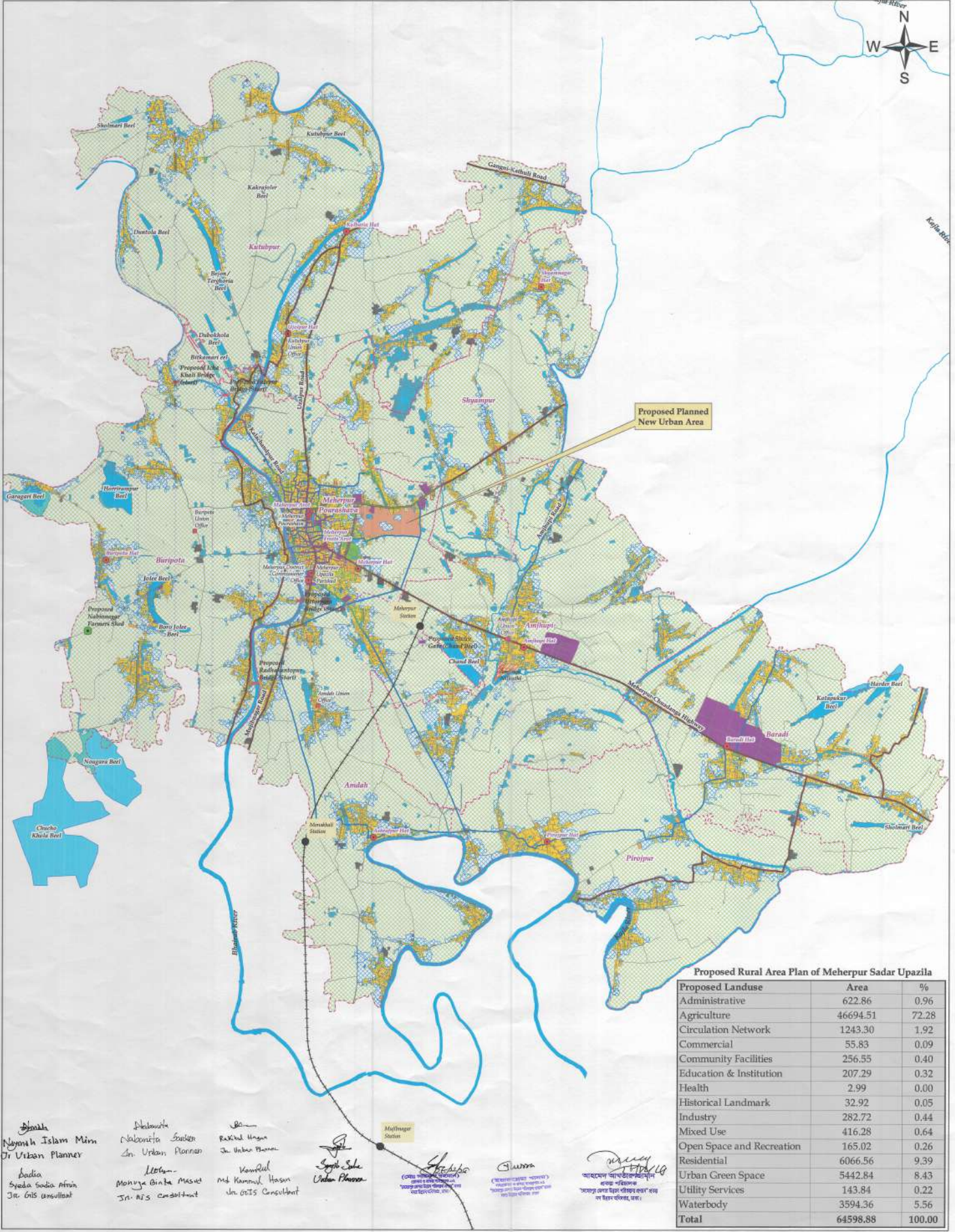


# Draft Rural Area Plan of Meherpur Sadar Upazila, Meherpur



**Proposed Rural Area Plan of Meherpur Sadar Upazila**

Proposed Landuse	Area	%
Administrative	622.86	0.96
Agriculture	46694.51	72.28
Circulation Network	1243.30	1.92
Commercial	55.83	0.09
Community Facilities	256.55	0.40
Education & Institution	207.29	0.32
Health	2.99	0.00
Historical Landmark	32.92	0.05
Industry	282.72	0.44
Mixed Use	416.28	0.64
Open Space and Recreation	165.02	0.26
Residential	6066.56	9.39
Urban Green Space	5442.84	8.43
Utility Services	143.84	0.22
Waterbody	3594.36	5.56
<b>Total</b>	<b>64598.88</b>	<b>100.00</b>

**সিনিয়র**  
 Nymah Islam Minn  
 Jr. Urban Planner  
 Sadea  
 Syeda Sadia Afrin  
 Jr. GIS Consultant

**নবীনতা**  
 Nabawita Saadon  
 Sr. Urban Planner

**রাফিক হাসান**  
 Rafik Hasan  
 Sr. Urban Planner

**মুস্তাফিজুল হক**  
 Mustafizul Haque  
 Sr. GIS Consultant

**সফিকুল হক**  
 Safiqul Haque  
 Sr. GIS Consultant

**Legend**

<b>Proposed Landuse</b>	<b>Health</b>	<b>Urban Green Space</b>
Administrative	Health	Urban Green Space
Agriculture	Industry	Utility Services
Circulation Network	Mixed Use	Waterbody
Commercial	Open Space & Recreation	
Community Facilities	Residential	
Education & Institution	Transportation	

<b>Development Proposal</b>	<b>Road Network</b>
Bridge	Existing Road
Farmer Shed	Proposed Road Development (Primary Road)
Shake Gate	Proposed Road Development (Secondary Road)
<b>Rail Network</b>	<b>Drainage Network</b>
Rail Line	Existing Drain
Rail Station	Proposed Drain

0 0.75 1.5 3 4.5 6 Kilometers  
 RP 1:42,200

**Preparation of Development Plan for Meherpur Zilla Project**

**Urban Development Directorate**  
 Ministry of Housing and Public Works  
 82, Segunbagicha, Dhaka - 1000