

CONSULTANT

PART A

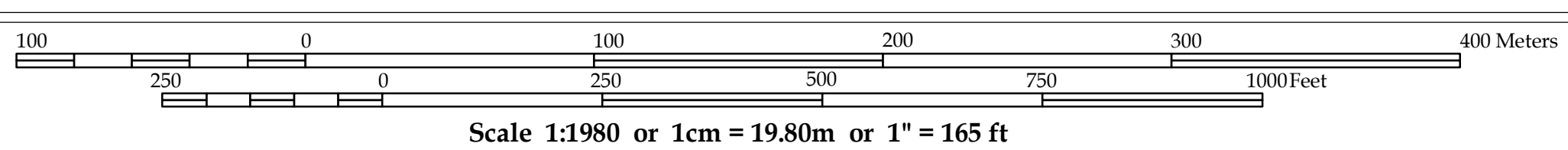
SHELTECH (PVT.) LTD

PART B

THE DECODE LTD.

DDC LTD.

Detailed Area Plan (2022-2035) for RAJUK Area



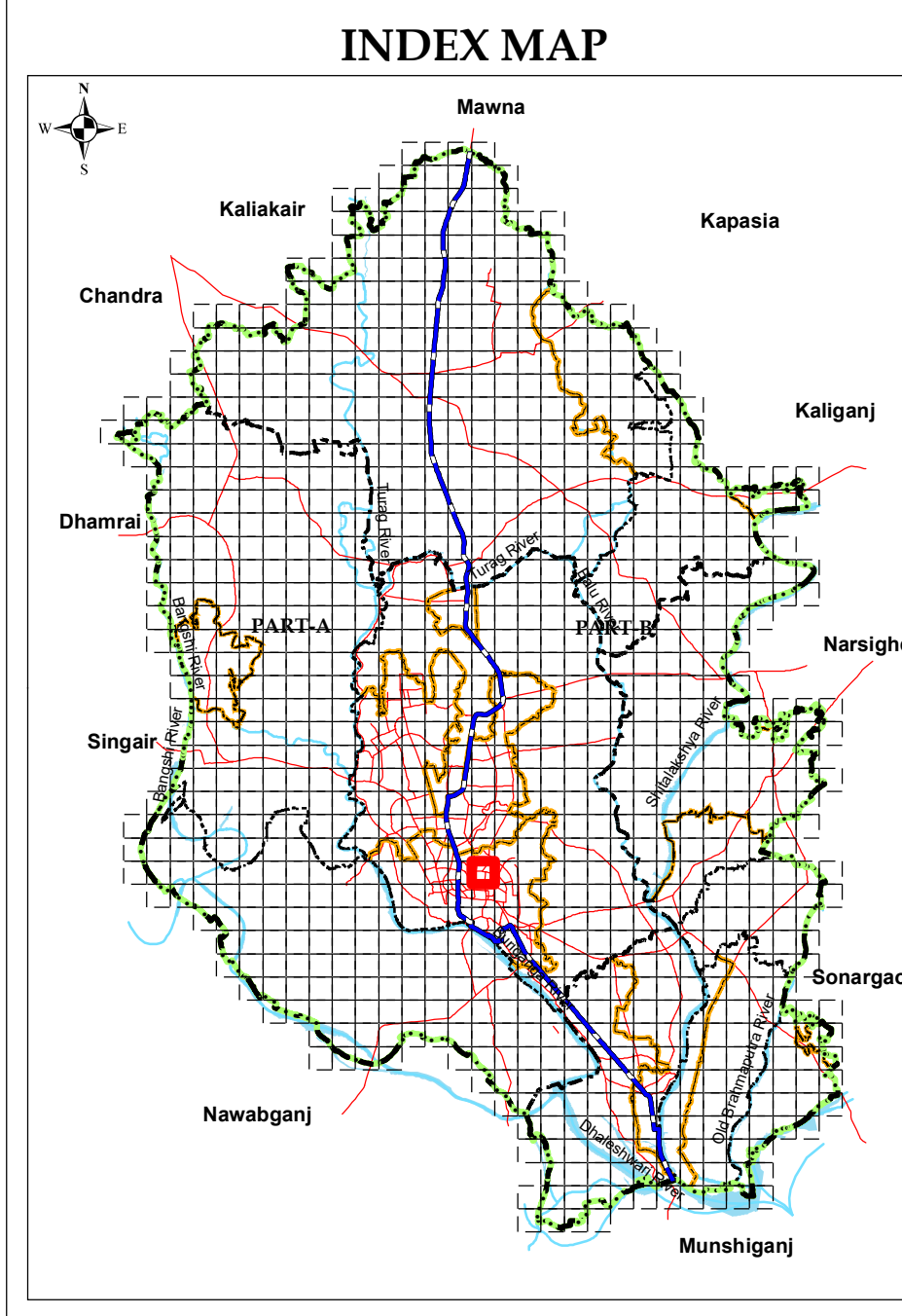
Scale 1:1980 or 1cm = 19.80m or 1" = 165 ft



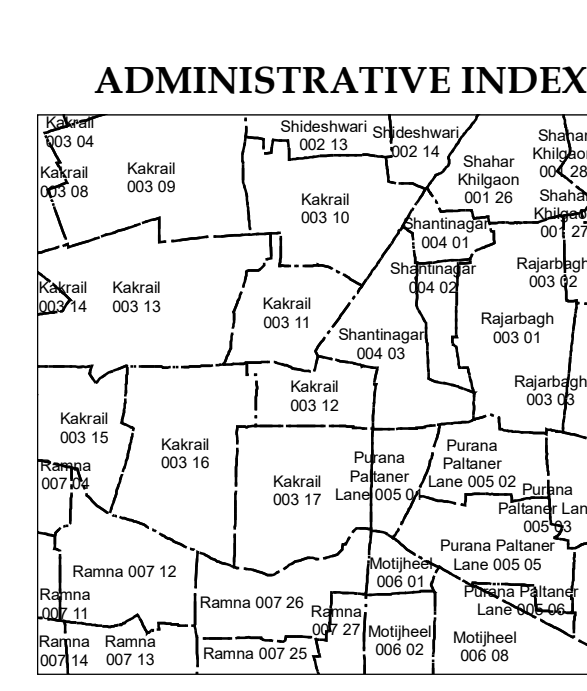
Government of the People's Republic of Bangladesh
Ministry of Housing and Public Works
Rajdhani Unnayan Karttripakha (RAJUK)
SRO No 282-Ain (Law)/2022, Date: Tuesday, 23 August 2022

Data Source
Stereo satellite image based field survey (2015-17) under DAP (2022-2035) Project of RAJUK
WGS_1984_UTM_Zone_46N
WKID: 32646 Authority: EPSG
Projection: Transverse Mercator
False Easting: 500000.0; False Northing: 0.0
Central Meridian: 93.0; Scale Factor: 0.9996
Latitude of Origin: 0.0; Linear Unit: Meter (1.0)
Geographic Coordinate System: GCS_WGS_1984
Angular Unit: Degree (0.0174532925199433)
Prime Meridian: Greenwich (0.0)
Datum: D_WGS_1984
Spheroid: WGS_1984
Grid values are shown in Meter

Table with columns for CONSULTANT and RAJUK, listing roles like Town Planner, Deputy Team Leader, Team Leader, and Project Director with corresponding signatures.



SHEET INDEX table showing a grid of sheet numbers (H10-3, H10-4, H10-2, H10-1, H10-2, H09-3, H09-4, H09-3) with H10-1 highlighted in red.



LEGEND section containing symbols and descriptions for Administrative Boundary, Proposed Key Facilities, Proposed Networks, Existing Key Features, Landuse Management, and Overlay Zone.