

CONSULTANT

PART A

SHELTECH (PVT.) LTD

THE DECODE LTD.

PART B

DDC LTD.

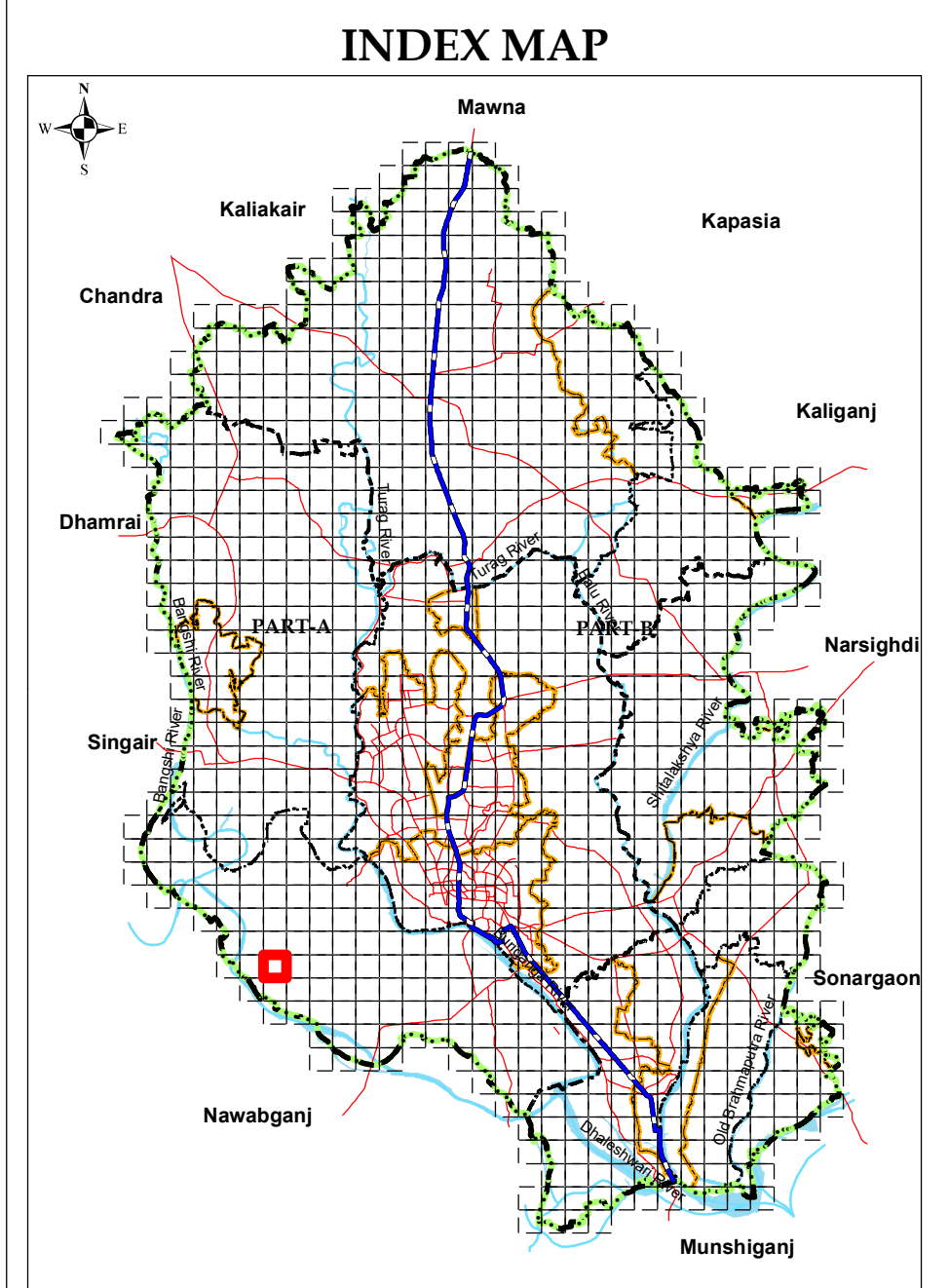
Detailed Area Plan (2022-2035) for RAJUK Area



Government of the People's Republic of Bangladesh  
Ministry of Housing and Public Works  
Rajdhani Unnayan Karttripakkha (RAJUK)  
SRO No 282-Ain (Law)/2022, Date: Tuesday, 23 August 2022

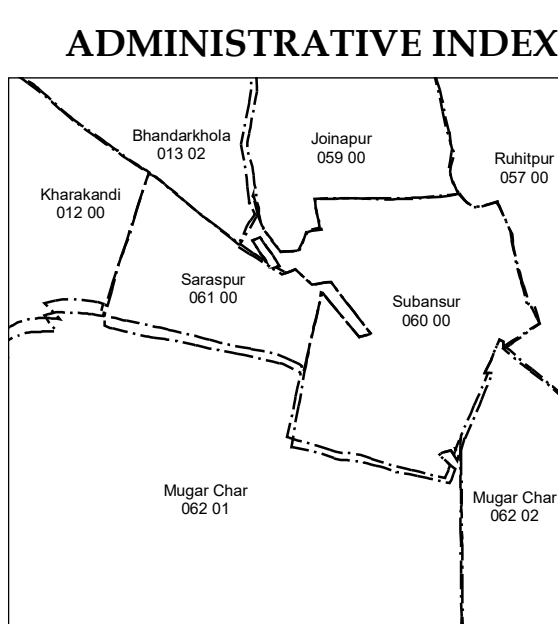
Data Source

Stereo satellite image based field survey (2015-17) under DAP (2022-2035) Project of RAJUK  
WGS\_1984\_UTM\_Zone\_46N  
WKID: 32646 Authority: EPSG  
Projection: Transverse Mercator  
False Easting: 500000.0; False Northing: 0.0  
Central Meridian: 93.0; Scale Factor: 0.9996  
Latitude of Origin: 0.0; Linear Unit: Meter (1.0)  
Geographic Coordinate System: GCS\_WGS\_1984  
Angular Unit: Degree (0.0174532925199433)  
Prime Meridian: Greenwich (0.0)  
Datum: D\_WGS\_1984  
Spheroid: WGS\_1984  
Grid values are shown in Meter



**SHEET INDEX**

D08-4	D08-3	E08-4
D08-1	<b>D08-2</b>	E08-1
D07-4	D07-3	E07-4



**LEGEND**

<p><b>Administrative Boundary</b></p> <ul style="list-style-type: none"> <li>DMR Boundary</li> <li>District Boundary</li> <li>City Corporation Boundary</li> <li>Paureshava Boundary</li> <li>Union Boundary</li> <li>Ward Boundary</li> <li>Density Block Boundary</li> <li>Mauza Sheet Boundary</li> <li>RS Mauza Plot Boundary</li> <li>Grid Line</li> <li>Existing Railway</li> </ul> <p><b>Existing Key Features</b></p> <ul style="list-style-type: none"> <li>DC Office</li> <li>Upazila Headquarter</li> <li>Union Parishad Office</li> <li>City Corporation Office</li> <li>Paureshava Office</li> <li>Airport</li> <li>Railway Station</li> <li>Truck Terminal</li> <li>Bus Terminal</li> </ul>	<p><b>Proposed Key Facilities</b></p> <ul style="list-style-type: none"> <li>Primary School</li> <li>High School</li> <li>College</li> <li>University</li> <li>Park</li> <li>Playground</li> <li>Stadium</li> <li>Playground</li> <li>Park</li> <li>Water Based Park</li> <li>Eco Park</li> <li>Regional Park</li> <li>Boat/Launch Terminal</li> <li>Bus Terminal</li> <li>Bus Depot</li> <li>Truck Terminal</li> <li>Heritage Site</li> <li>Key Point Installation (KPI)</li> <li>Sewage Treatment Plant</li> <li>Water Treatment Plant</li> <li>Low Income Housing Area</li> <li>BRT/MRT Station</li> </ul> <p><b>Proposed Networks</b></p> <ul style="list-style-type: none"> <li>Distributor Road (Existing)</li> <li>Distributor Road (Proposed)</li> <li>Inter Regional Connector Road (Existing)</li> <li>Inter Regional Connector Road (Proposed)</li> <li>Intra Regional Connector Road (Existing)</li> <li>Intra Regional Connector Road (Proposed)</li> <li>Waterway (Blue Network)</li> <li>Proposed Dhaka-Mawa Railway Network</li> <li>Elevated Expressway</li> <li>BRT Route</li> <li>MRT Route</li> </ul> <p><b>Landuse Management Zone Landuse Zone</b></p> <ul style="list-style-type: none"> <li>Agricultural Zone</li> <li>Commercial Zone</li> <li>Forest Area</li> <li>Heavy Industrial Zone</li> </ul>	<p><b>Proposed Key Facilities</b></p> <ul style="list-style-type: none"> <li>Playground</li> <li>Park</li> <li>Landfill Site</li> <li>Water Based Park</li> <li>Eco Park</li> <li>Regional Park</li> <li>Boat/Launch Terminal</li> <li>Bus Terminal</li> <li>Bus Depot</li> <li>Truck Terminal</li> <li>Heritage Site</li> <li>Key Point Installation (KPI)</li> <li>Sewage Treatment Plant</li> <li>Water Treatment Plant</li> <li>Low Income Housing Area</li> <li>BRT/MRT Station</li> </ul> <p><b>Landuse Management Zone Landuse Zone</b></p> <ul style="list-style-type: none"> <li>Agricultural Zone</li> <li>Commercial Zone</li> <li>Forest Area</li> <li>Heavy Industrial Zone</li> </ul> <p><b>Overlay Zone</b></p> <ul style="list-style-type: none"> <li>TOD Zone</li> <li>Heritage Site (250m Buffer)</li> <li>KPI Area</li> <li>General Flood Plain Area</li> <li>Main Flood Flow Area</li> <li>General Flood Flow Area</li> <li>Hazaribag Regeneration Site</li> <li>Hatirjheel Special Area</li> </ul> <p><b>Annotation Example</b></p> <p>Proposed Road Width (ft) Mauza Plot (Dag) Number Important Location Name Jurain 0 2 0 0 1 Mauza, J.L.No, Sheet No</p>
---	---	---

CONSULTANT		RAJUK	