

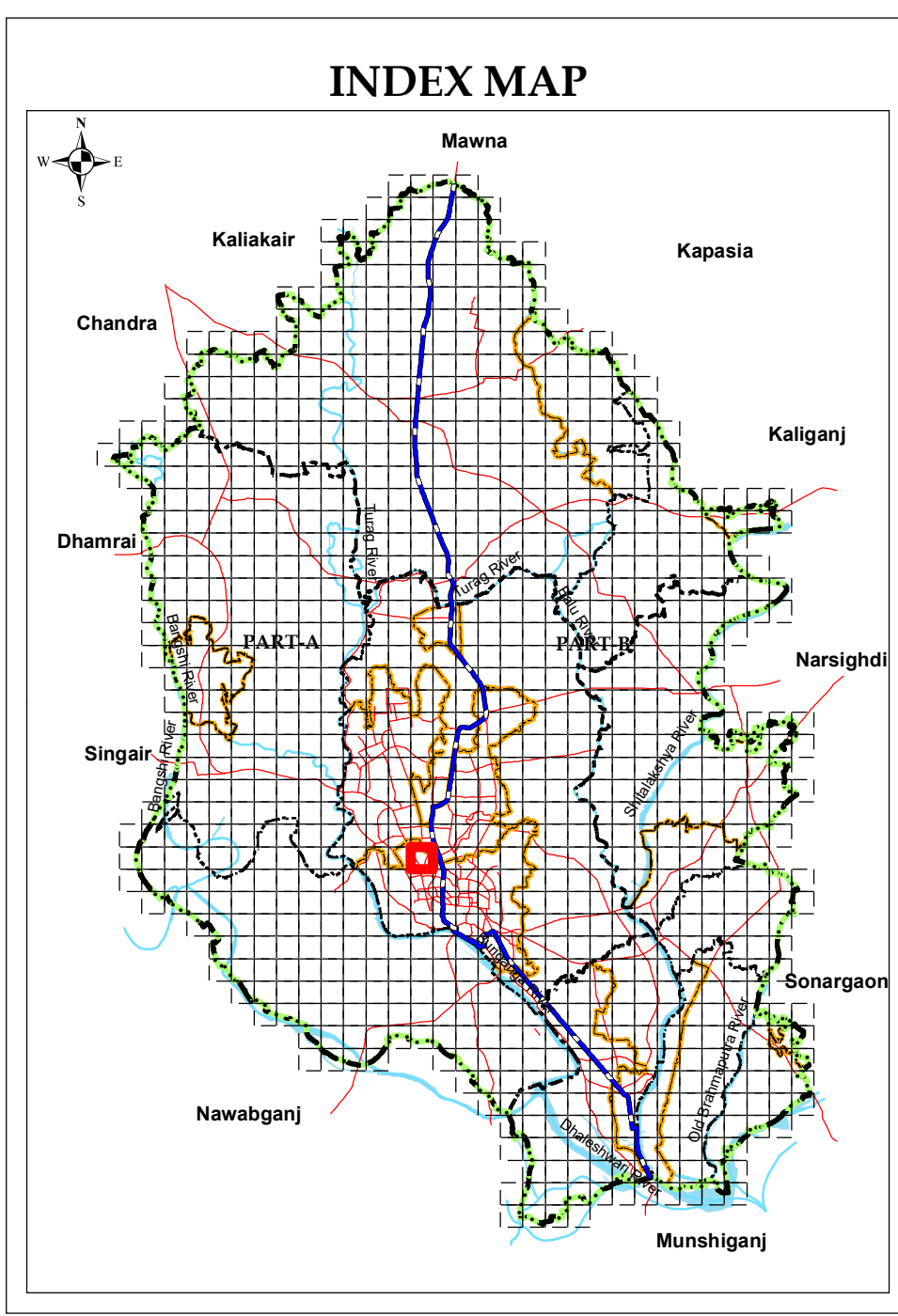
**CONSULTANT**

<b>PART A</b>	<b>PART B</b>
শেপটেক SHELTECH SHELTECH (PVT.) LTD	the decode ltd. THE DECODE LTD.
	ccc DDC LTD.

**Detailed Area Plan (2022-2035) for RAJUK Area**

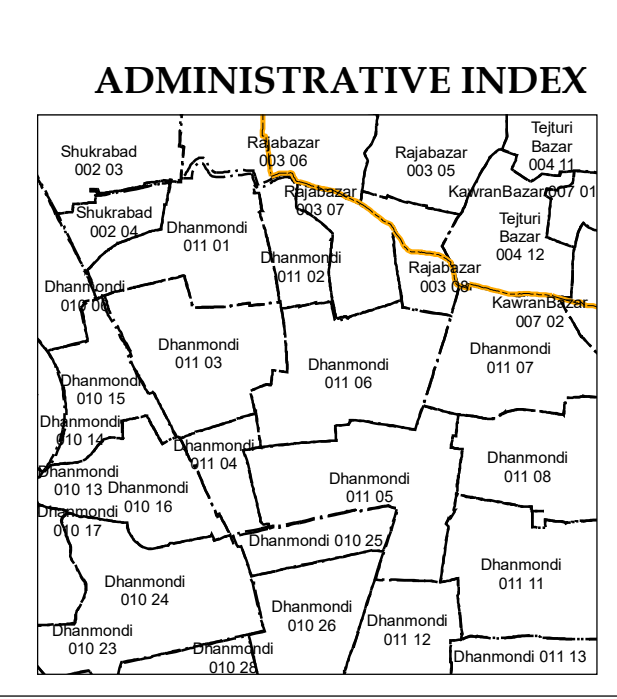
Scale 1:1980 or 1cm = 19.80m or 1" = 165 ft

Government of the People's Republic of Bangladesh  
Ministry of Housing and Public Works  
**Rajdhani Unnayan Karttripakkha (RAJUK)**  
SRO No 282-Ain (Law)/2022, Date: Tuesday, 23 August 2022



**SHEET INDEX**

G11-2	H11-1	H11-2
G10-3	<b>H10-4</b>	H10-3
G10-2	H10-1	H10-2



**LEGEND**

<p><b>Administrative Boundary</b></p> <ul style="list-style-type: none"> <li>DMR Boundary</li> <li>District Boundary</li> <li>City Corporation Boundary</li> <li>Paushava Boundary</li> <li>Union Boundary</li> <li>Ward Boundary</li> <li>Density Block Boundary</li> <li>Mauza Sheet Boundary</li> <li>RS Mauza Plot Boundary</li> <li>Grid Line</li> <li>Existing Railway</li> </ul> <p><b>Existing Key Features</b></p> <ul style="list-style-type: none"> <li>DC Office</li> <li>Upazila Headquarter</li> <li>Union Parishad Office</li> <li>City Corporation Office</li> <li>Paushava Office</li> <li>Airport</li> <li>Railway Station</li> <li>Truck Terminal</li> <li>Bus Terminal</li> </ul>	<p><b>Proposed Key Facilities</b></p> <ul style="list-style-type: none"> <li>Playground</li> <li>Park</li> <li>Landfill Site</li> <li>Water Based Park</li> <li>Eco Park</li> <li>Regional Park</li> <li>Boat/Launch Terminal</li> <li>Bus Terminal</li> <li>Bus Depot</li> <li>Truck Terminal</li> <li>Heritage Site</li> <li>Key Point Installation (KPI)</li> <li>Sewage Treatment Plant</li> <li>Water Treatment Plant</li> <li>Low Income Housing Area</li> <li>BRT/MRT Station</li> </ul> <p><b>Proposed Networks</b></p> <ul style="list-style-type: none"> <li>Distributor Road (Existing)</li> <li>Distributor Road (Proposed)</li> <li>Inter Regional Connector Road (Existing)</li> <li>Inter Regional Connector Road (Proposed)</li> <li>Intra Regional Connector Road (Existing)</li> <li>Intra Regional Connector Road (Proposed)</li> <li>Waterway (Blue Network)</li> <li>Proposed Dhaka-Mawa Railway Network</li> <li>Elevated Expressway</li> <li>BRT Route</li> <li>MRT Route</li> </ul> <p><b>Landuse Management Landuse Zone</b></p> <ul style="list-style-type: none"> <li>Agricultural Zone</li> <li>Commercial Zone</li> <li>Forest Area</li> <li>Heavy Industrial Zone</li> </ul>	<p><b>Proposed Key Facilities</b></p> <ul style="list-style-type: none"> <li>Primary School</li> <li>High School</li> <li>College</li> <li>University</li> <li>Park</li> <li>Playground</li> <li>Stadium</li> </ul> <p><b>Landuse Zone</b></p> <ul style="list-style-type: none"> <li>Institutional Zone</li> <li>Mixed Use Zone (Predominantly Commercial)</li> <li>Mixed Use Zone (Predominantly Industrial)</li> <li>Mixed Use Zone (Predominantly Residential)</li> <li>Mixed Use Zone (Residential-Commercial)</li> <li>Open Space</li> <li>Residential Zone</li> <li>Transport Communication (Existing)</li> <li>Transport Communication (Proposed)</li> <li>Waterbody</li> </ul> <p><b>Overlay Zone</b></p> <ul style="list-style-type: none"> <li>TOD Zone</li> <li>Heritage Site (250m Buffer)</li> <li>KPI Area</li> <li>General Flood Plain Area</li> <li>General Flood Flow Area</li> <li>Main Flood Flow Area</li> <li>Hazaribag Regeneration Site</li> <li>Hatirjheel Special Area</li> </ul>
---	--	---

**Data Source**

Stereo satellite image based field survey (2015-17) under DAP (2022-2035) Project of RAJUK

WGS\_1984\_UTM\_Zone\_46N  
WKID: 32646 Authority: EPSG

Projection: Transverse Mercator  
False Easting: 500000.0; False Northing: 0.0  
Central Meridian: 93.0; Scale Factor: 0.9996  
Latitude of Origin: 0.0; Linear Unit: Meter (1.0)  
Geographic Coordinate System: GCS\_WGS\_1984  
Angular Unit: Degree (0.0174532925199433)  
Prime Meridian: Greenwich (0.0)  
Datum: D\_WGS\_1984  
Spheroid: WGS\_1984  
Grid values are shown in Meter

CONSULTANT		RAJUK	
Town Planner (Landuse) DAP (2022-2035), Part-A	Town Planner (Landuse) DAP (2022-2035), Part-B	Project Director DAP (2022-2035) Project, RAJUK	
Deputy Team Leader DAP (2022-2035), Part-A	Deputy Team Leader DAP (2022-2035), Part-B	Member (Planning) Rajdhani Unnayan Karttripakkha (RAJUK)	
Team Leader DAP (2022-2035), Part-A	Team Leader DAP (2022-2035), Part-B	Chairman Rajdhani Unnayan Karttripakkha (RAJUK)	

**Annotation Example**

Proposed Road Width (ft)  
Mauza Plot (Dag) Number  
Important Location Name  
Jurain 020 01 Mauza, J.L.No, Sheet No