



REVISED MAPPING OF MINISTRIES/DIVISIONS AND CUSTODIAN/PARTNER AGENCIES FOR SDG IMPLEMENTATION IN BANGLADESH

General Economics Division (GED)
Bangladesh Planning Commission
Government of the People's Republic of Bangladesh
January 2022

Revised Mapping of Ministries/Divisions and Custodian/Partner Agencies for SDG Implementation in Bangladesh

SDG Publication No. # 29

Prepared and Published by
General Economics Division (GED)
Bangladesh Planning Commission

This document is prepared with the technical and financial support from the ‘Strengthening Institutional Capacity for SDGs Achievement in Bangladesh (SC4SDG)’ project of UNDP Bangladesh and UNDP-UNEP Poverty-Environment Action for Sustainable Development Goals project.

Copyright © General Economics Division, Bangladesh Planning Commission, Sher-e-Bangla Nagar, Block-14, Dhaka-1207

Copies Printed: 1000

Design and Printed by
Turtle
67/d (3rd Floor) Green Road
Panthapath | Dhaka-1205

Message



M. A. Mannan, MP
Honourable Minister
Ministry of Planning
Government of the People's Republic of Bangladesh

I would like to congratulate the General Economics Division (GED) of Bangladesh Planning Commission for publishing the document on “Revised Mapping of Ministries/Divisions and Custodian/Partner Agencies for SDGs Implementation in Bangladesh”. The revised mapping document identifies the responsibilities of the ministries/divisions and custodian/partner agencies in implementing the SDGs according to the global targets and indicators.

The Global Agenda 2030 recognizes that increasing economic growth, eliminating poverty, protecting negative effects of climate change, ensuring sustainable consumption and production, and building stronger institutions provide the foundation of development. Bangladesh aspires to achieve the SDGs within the stipulated time and our commitment to attain sustainable development is rooted in Bangabandhu Sheikh Mujibur Rahman's dream. Our Father of the Nation always dreamt of a nation where there will be no poverty. The pathway he chose for eradicating poverty was to empower the poorest and most vulnerable people. Thus far, we have made strong progress in SDGs implementation. Our Hon'ble Prime Minister has recently been conferred with the “SDG Progress Award”. This award is an international acknowledgment of Bangladesh's success in responding to the universal call to end poverty, protect the planet, and ensure peace and prosperity for all.

The first mapping document was published in 2016 by GED. However, several ministries/divisions in the last 5 years went through changes and they have been assigned new roles and responsibilities. Besides, the custodian/partner agencies have emerged as important actors for the implementation

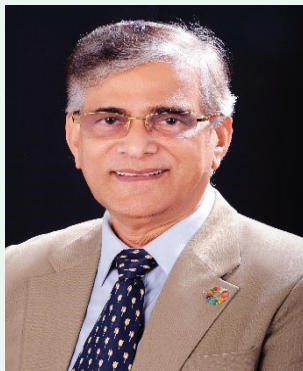
of SDGs since they bring in expertise from around the globe, for instance, in unpacking metadata and generating new data for making evidence-based policy decisions. Therefore, the revision of the previous mapping document was a time demand. I believe that this revised mapping document will help the ministries/divisions along with the custodian/partner agencies to realize their roles in achieving the SDGs and guide them to work in a coordinated manner.

I would like to take this opportunity to thank the GED officials for their initiative and hard work, different ministries/divisions as well as custodian/partner agencies for providing their valuable inputs, and the SC4SDG project of UNDP Bangladesh and UNEP-PEA4SDGs for their support in the preparation of this important document.



(M. A. Mannan, MP)

Message



Dr. Shamsul Alam
Honorable Minister of State
Ministry of Planning
Government of the People's Republic of Bangladesh

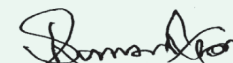
I am delighted to learn that the General Economics Division (GED) of Bangladesh Planning Commission is publishing the revised mapping document titled “Revised Mapping of Ministries/Divisions and Custodian/Partner Agencies for SDGs Implementation in Bangladesh”. The previous mapping document published in 2016 required revisiting on an urgent basis as several ministries have recently undergone changes in terms of creation of new divisions in some ministries with new roles and responsibilities that were assigned in the government system. To ensure that ministries/divisions can play their constructive and meaningful roles in achieving the SDGs, the revised mapping document reassigned their role for better coordination to facilitate the implementation of SDGs. The current mapping document is unique because it brings together the custodian and partner agencies so that the ministries/divisions can deliver their assigned tasks in a harmonized way. Besides, this is worth mentioning that the revised mapping document includes the updated list of SDG indicators. The global indicator framework for SDGs is refined annually. The latest global indicator framework includes 231 unique indicators which have been reflected in the revised mapping document.

SDGs are comprehensive and interconnected and thus call for a holistic approach in their implementation. Under the prudent leadership of the Honorable Prime Minister and her strong commitment, the Government of Bangladesh has played an important role in shaping the Sustainable Development Goals. The Government integrated SDGs in the 7th Five Year Plan and ongoing 8th Five Year Plan. Nonetheless, one of the many challenges faced by the Government of Bangladesh while implementing the SDGs is ensuring appropriate coordination across ministries and other levels of the Government. Hence, achieving progress on the SDGs requires the Government to work in policy areas and involve all segments of

society – Government, private sector, NGOs/INGOs, development partners, and civil society. This revised mapping document aspires to determine the responsibilities of ministries/divisions and resident custodian/partner agencies according to the sustainable development goals, targets, and indicators in one document to ensure coordination among all the actors.

We understand that considerable expertise and coordination across ministries/divisions and custodian/partner agencies are required to generate and compile national statistics and metadata for the SDG indicators. —To meet the internationally agreed data generation standard, custodian/partner agencies should communicate with national statistical systems to generate required metadata for monitoring the progress of SDGs implementation at the national level. Hence, the revised mapping document addresses how ministries/divisions and custodian/partner agencies can coordinate in mining fast-track data for SDGs. Given that there is a growing need to increase the effectiveness and efficiency of action needed to achieve all SDGs by the year 2030, I hope that this revised mapping document will help to accelerate the SDGs implementation in Bangladesh. I believe, successful attainment of SDGs and accompanying targets will pave the startling way for ‘Branding Bangladesh’ best internationally.

I take this opportunity to thank the GED officials for extending their efforts in revisiting the mapping exercise. The technical and financial support provided by the SC4SDG project of UNDP Bangladesh and UNEP-PEA4SDGs also deserves special thanks. I also acknowledge the support and invaluable contribution of the different ministries/divisions and custodian/partner agencies throughout the revisiting process.



(Dr. Shamsul Alam)

Message



Zuena Aziz

Principal Coordinator (SDG Affairs)

Prime Minister's Office

Government of the People's Republic of Bangladesh

I am happy to learn that the document titled “Revised Mapping of Ministries/Divisions and Custodian/Partner Agencies for SDGs Implementation in Bangladesh” has been finalized and ready to be published by the General Economics Division of the Bangladesh Planning Commission.

With a view to spearheading the process of SDGs implementation in our country, the original exercise of mapping of ministries was done in the initial year of Agenda 2030 and published in September 2016, albeit some indicators were in tier III category and their metadata were not finalized. After the elapse of five years, all indicators are in tier I and their metadata are available, some indicators are newly included, some are deleted, and some are modified. Hence, it was felt to update the original document. Some implementation ministries/divisions also requested to revisit the document.

I am pleased knowing that the revised document has been finalized after multiple consultations with government agencies, development partners including various UN agencies and relevant stakeholders. The document contains an update on the lead, co-lead and associate ministries/divisions, data sources, and custodian as well as partner agencies for all goals of the Agenda 2030. I wish the revised SDGs mapping document will act as the main instrument and catalyst for ministries and divisions to update their current SDGs Action Plan and ensure effective implementation for achieving the targets of the SDGs by 2030, and eventually becoming a developed country by 2041.

Bangladesh has done a tremendous job in the last few years in the dimensions of social, economic and biosphere under the dynamic leadership of Hon'ble Prime Minister Sheikh Hasina. As a consequence, she was conferred with the "SDGs Progress Award" in September 2021 at the 9th International Conference on Sustainable Development by the UN-sponsored Sustainable Development Solutions Network (SDSN).

I hope this document will serve as a key instrument in taking the initiatives of the SDGs implementation further forward in Bangladesh. The added clarity with regards to the custodian/partner agencies and ministries/divisions in charge of different indicators should allow for better inter-agency coordination and more streamlined collaboration.

Finally, I would like to express my sincere gratitude to all the concerned ministries/divisions of the Government of Bangladesh, as well as all development partners for their efforts and contributions to this document. I like to take this opportunity to express my sincere thanks to all the members of 'SDGs Implementation and Review Committee' who were present in the meeting to finalize this document. I would also like to thank the officials of General Economics Divisions (GED), Bangladesh Planning Commission for their endeavours throughout this process and for taking the initiative of publishing this document.



(Zuena Aziz)

Foreword



Dr. Md. Kawser Ahmed

Member (Secretary)

General Economics Division (GED)

Bangladesh Planning Commission

The Government of Bangladesh has played a critical role in formulating SDGs and has been contributing since the Rio+20 Earth Conference in 2012. The Government of Bangladesh's commitment to attaining SDGs has been manifested in the development plans. In the meantime, GED has framed a mapping for each of the 169 targets of SDGs to identify the responsible ministries/divisions/agencies for achieving the SDGs successfully. This document was our first effort to implement the sustainable development agenda. I take the opportunity to thank the team GED for their efforts in determining the role and responsibilities of Ministries, Divisions and Custodian Agencies as the first important step toward achieving SDGs.

“Mapping of Ministries by Targets in the implementation of SDGs aligning with 7th Five Year Plan (2016-20)” was published on 27 July 2016. GED has recently reviewed and revised this mapping document for determining the new roles and responsibilities of the ministries and divisions that went under reform. The revised mapping template includes custodian/partner agencies' role and data sources by global SDG indicators for the Lead, Co-lead, and Associate Ministries/Divisions. The revised mapping document is a well thought out exercise.

This document will add value and support ministries/divisions/agencies to understand their roles and responsibilities clearly and that, in turn, will help to contribute to achieving the sustainable development agenda. In addition, this document will help the ministries/divisions to charter its own

programs and intervention for accelerated achievement of the Sustainable Development. It further aims to provide an understanding of the current SDG indicators and reporting progress at the global level.

It is evident that the lack of disaggregated data has been a major challenge for SDG implementation in Bangladesh. An evidence-based real-time, up-to-date, credible, and representative data is very important for making informed policy decisions. It is necessary to strengthen national data ecosystems and report the development progress accordingly. This revised mapping document is one output of a larger initiative to implement SDGs that seeks to respond to the needs of country for strategic and practical direction in framing national policies and strategies for achieving SDGs.

I express my gratitude to all the relevant ministries, divisions, and agencies for their support in reviewing and updating the mapping document. I am thankful to all my GED colleagues for their efforts in preparing this important document. I would also like to extend my appreciation to the SC4SDG project of UNDP Bangladesh and UNEP-PEA4SDGs for their technical and financial assistance in publishing the report. Finally, I am grateful to Mr. M. A. Mannan MP, Hon'ble Minister, Ministry of Planning and Dr. Shamsul Alam, Hon'ble Minister of State, Ministry of Planning for their constant guidance in finalizing the revised mapping document.



(Dr. Md. Kawser Ahmed)

The Preparation Process and the Acknowledgements

The first mapping handbook “Mapping of Ministries by Targets in the implementation of SDGs aligning with 7th Five Year Plan (2016-20)” was first published in September 2016. This document has been revised mainly for four reasons- 1. Global Indicator Framework has been revisited drastically by the UNSD; 2. A number of ministries have been divided into several divisions; 3. Goal-wise coordinating ministry/division has been assigned by the PMO; 4. this mapping is also warranted to be synced with the custodianship of the international agencies as they can provide us with expertise from around the globe in debunking metadata and generation of new data.

The revised mapping template includes custodian/partner agencies and data sources by global SDG indicators along with the lead, co-lead, and associate ministries/divisions, which were absent in the first mapping document. This revised Mapping document has determined the responsibilities of Ministries/Divisions/custodian/Partner Agencies by SDG goals, targets, and indicators in one single document for achieving the SDGs targets successfully. The data sources of each indicator has also been incorporated in this document to make it more user friendly. In this endeavor, GED drove the whole process to collect the experience, organized a series of consultation workshops with all the Ministries/Divisions and Partner/Custodian Agencies to incorporate their feedback. The first consultation workshop was organized with Custodian Agencies on November 19-21, 2019 followed by an Inter-ministerial Consultation Workshop on November 26-28, 2019. The next consultation workshop was held with the SDG Focal Points of 58 Ministries/Divisions on 14 March 2021. The last consultation workshop was held on 22 September 2021 with the Government representatives from multiple agencies such as BBS, as well as from various UN agencies such as UNRCO, ILO, UNAIDS, WFP, WHO, UNDP, and others. After receiving all the comments/suggestions from all the stakeholders, GED finalized the document and placed it before the SDG Implementation and Review Committee Meeting held on 06 October 2021. The Committee approved the document along with the directive to provide further feedback, if any, from the ministries/divisions to GED by 13 October 2021. Upon this, the document was thoroughly edited.

The inputs from Ministries/Divisions and Custodian/partner Agencies have been compiled and analyzed to prepare the revised Handbook by an expert team of GED led by Mr. Md. Mahbubul Hoque Patwary, Joint Chief. Other members of the team were Ms. Munira Begum, Joint Chief; Mr. Md. Mahbubul Alam Siddiquee, Deputy Chief; Mr. Mohammad Fahim Afsan Chowdhury, Senior Assistant Chief; Mr. Napoleon Dewan, Senior Assistant Chief; Mr. Shimul Sen, Senior Assistant Chief; and Mr. A.Z.M. Saleh, Ex SDG and M&E Analyst, SC4SDG Project. Mr. Md. Mafidul Islam, Ex-Chief, GED deserves special thanks for his extensive contribution and guidance.

We acknowledge the contribution of all SDG Focal Point Officers of all Ministries/Divisions, Focal Point Officers of custodian agencies and the officials of BBS, especially Mr. Md. Alamgir Hossen, Deputy Director and Focal Point Officer, SDG Cell, BBS. Thanks are due to all the officials of “Strengthening Institutional Capacity for SDGs Achievement in Bangladesh (SC4SDG)” Project for their efforts in arranging consultation workshops and inputs in finalizing the document. Thanks are also due to the Prime Minister’s Office, Specially Mr. Md. Monirul Islam, Joint Secretary (SDG) for the continuous support and contribution for publishing this document. Sincere thanks and gratitude to Honorable Minister of State, Ministry of Planning, Dr. Shamsul Alam for his passion, inspiration, and guidance in bringing out this important SDGs publication.

The Preparatory Team

CONTENTS

SDG – 1: End poverty in all its forms everywhere	3
SDG – 2: End hunger, achieve food security and improved nutrition and promote sustainable agriculture	9
SDG – 3: Ensure healthy lives and promote well-being for all at all ages	15
SDG– 4: Ensure inclusive and equitable quality education and promote lifelong learning opportunities for all	23
SDG – 5: Achieve gender equality and empower all women and girls	29
SDG – 6: Ensure availability and sustainable management of water and sanitation for all	35
SDG – 7: Ensure access to affordable, reliable, sustainable and modern energy for all	41
SDG – 8: Promote sustained, inclusive and sustainable economic growth, full and productive employment and decent work for all	45
SDG – 9: Build resilient infrastructure, promote inclusive and sustainable industrialization and foster innovation	51

SDG – 10: Reduce inequality within and among countries	57
SDG – 11: Make cities and human settlements inclusive, safe, resilient and sustainable	63
SDG – 12: Ensure sustainable consumption and production patterns	69
SDG – 13: Take urgent action to combat climate change and its impacts	75
SDG – 14: Conserve and sustainably use the oceans, seas and marine resources for sustainable development	81
SDG – 15: Protect, restore and promote sustainable use of terrestrial ecosystems, sustainably manage forests, combat desertification, and halt and reverse land degradation and halt biodiversity loss	87
SDG – 16: Promote peaceful and inclusive societies for sustainable development, provide access to justice for all and build effective, accountable and inclusive institutions at all levels	93
SDG – 17: Strengthen the means of implementation and revitalize the Global Partnership for Sustainable Development	99
Glossary	104

Acronyms

ACC	: Anti-Corruption Commission
APSC	: Annual Primary School Census
APTRCS	: Access to Public Transport & Road Communication survey
ASC	: Agriculture Sample Census
AWRRID	: Agriculture, Water Resources & Rural Institution Division, Planning Commission
BADC	: Bangladesh Agricultural Development Corporation
BANBEIS	: Bangladesh Bureau of Educational Information and Statistics
BB	: Bangladesh Bank
BBS	: Bangladesh Bureau of Statistics
BCG	: Bangladesh Cost Guard
BD	: Bridges Division
BDHS	: Bangladesh Demographic and Health Survey
BEPZA	: Bangladesh Export Processing Zones Authority
BERC	: Bangladesh Energy Regulatory Commission
BES	: Bangladesh Education Statistics
BEZA	: Bangladesh Economic Zones Authority
BFD	: Bangladesh Forest Department
BFRI	: Bangladesh Fisheries Research Institute
BFRI	: Bangladesh Forest Research Institute
BHFS	: Bangladesh Health Facility Survey
BIDA	: Bangladesh Investment Development Authority
BIDS	: Bangladesh Institute of Development Studies
BINA	: Bangladesh Institute of Nuclear Agriculture
BIWTA	: Bangladesh Inland Water Transport Authority
BIWTC	: Bangladesh Inland Water Transport Corporation
BJRI	: Bangladesh Jute Research Institute

BLRI	: Bangladesh Livestock Research Institute
BMDA	: Barind Multipurpose Development Authority
BMET	: Bureau of Manpower Employment and Training
BMMS	: Bangladesh Maternal Mortality and Health Care Survey
BN	: Bangladesh Navy
BP	: Bangladesh Police
BPS	: Bangladesh Parliament Secretariat
BR	: Bangladesh Railway
BRRI	: Bangladesh Rice Research Institute
BRTA	: Bangladesh Road Transport Authority
BSRI	: Bangladesh Sugarcane Research Institute
BSRTI	: Bangladesh Sericulture Research and Training Institute
BTTC	: Bangladesh Trade and Tariff Commission
BTRC	: Bangladesh Telecommunication Regulatory Commission
BTRI	: Bangladesh Tea Research Institute
CA	: Custodian Agency
CAAB	: Civil Aviation Authority of Bangladesh
CD	: Cabinet Division
CDA	: Chattogram Development Authority
CDB	: Cotton Development Board
CDC	: Communicable Disease Control unit
CLU	: Child Labour Unit
CMNS	: Child and Mother Nutrition Survey
CMS	: Cost of Migration Survey
CPHS	: Citizen Perception Household Survey
CPTU	: Central Procurement Technical Unit
DAE	: Department of Agricultural Extension
DDM	: Department of Disaster Management

DGHS	: Directorate General of Health Services
DIFE	: Department of Inspection for Factories and Establishments
DIS	: Disability Information System database
DGfood	: Directorate General of Food
DLS	: Department of Livestock Service
DNC	: Department of Narcotics Control
DoE	: Department of Environment
DoF	: Department of Fisheries
DoP	: Department of Prison
DPE	: Directorate of Primary Education
DPHE	: Department of Public Health Engineering
DSHE	: Directorate of Secondary and Higher Education
DSS	: Department of Social Services
DYD	: Department of Youth Development
EC	: Economic Census
ECDS	: Environment, Climate Change and Disaster-related Statistics
ECS	: Election Commission Secretariat
EHS	: Education Household Survey
EMRD	: Energy and Mineral Resources Division
EPI	: Expanded Programme on Immunization
EPRWMS	: Environment Protection Expenditure, Resources and Waste Management Survey
ERD	: Economic Relations Division
FAO	: Food and Agriculture Organization
FD	: Finance Division
FDI	: Foreign Direct Investment
FID	: Financial Institutions Division
FIES	: Food Insecurity Experience Scale
FPMU	: Food Planning and Monitoring Unit

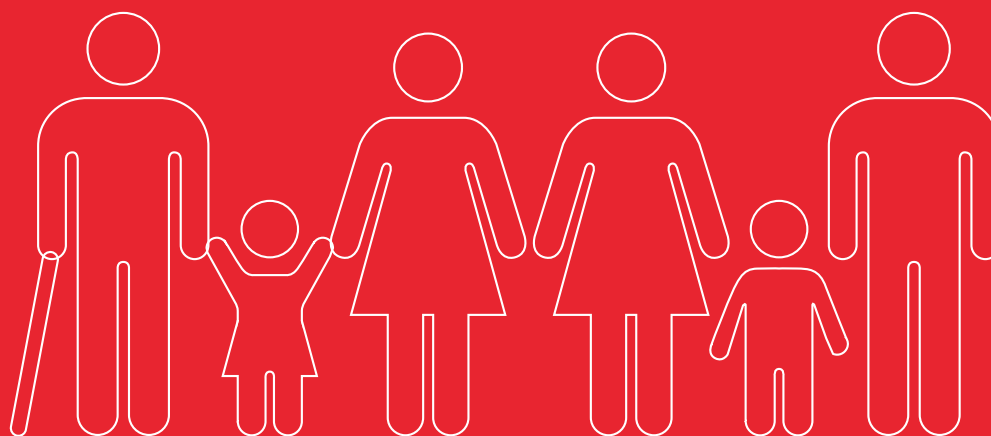
GATS	: Global Adult Tobacco Survey
GBVS	: Gender Based Violence Survey
GDAGR	: Global Databank for Animal Genetic Resources
GDP	: Gross Domestic Product
GED	: General Economics Division
GNI	: Gross National Income
HBRI	: Housing and Building Research Institute
HCU	: Hydrocarbon Unit
HDS	: Health and Demographic Survey
HED	: Health Engineering Department
HEU	: Health Economics Unit
HIES	: Household Income and Expenditure Survey
HIV	: Human Immunodeficiency Virus
HMSS	: Health and Morbidity Status survey
HSD	: Health Service Division
ICT	: Information and Communication Technology
ICTD	: Information and Communication Technology Division
IEA	: International Energy Agency
IED	: Industry & Energy Division, Planning Commission
IEDCR	: Institute of Epidemiology Disease Control and Research
IHR	: International Health Regulations
ILO	: International Labour Organization
IMED	: Implementation Monitoring and Evaluation Division
IMF	: International Monetary Fund
Inf. Com	: Information Commission
IRD	: Internal Resources Division
IUCN	: International Union for Conservation of Nature
JRC	: Joint River Commission

KDA	: Khulna Development Authority
LAS	: Literacy Assessment Survey
LASI	: Learning Assessment of Secondary Institutions
LDCs	: Least developed countries
LGD	: Local Government Division
LGED	: Local Government Engineering Department
LGRD	: Local Government, Rural Development
LJD	: Law and Justice Division
LPAD	: Legislative and Parliamentary Affairs Division
MEFWD	: Medical Education and Family Welfare Division
MFN	: Most Favoured Nation
MICS	: Multiple Indicator Cluster Survey
MIS	: Management information system
MoA	: Ministry of Agriculture
MoC	: Ministry of Commerce
MoCA	: Ministry of Cultural Affairs
MoCAT	: Ministry of Civil Aviation and Tourism
MoCHTA	: Ministry of Chittagong Hill Tracts Affairs
MoD	: Ministry of Defense
MoDMR	: Ministry of Disaster Management and Relief
MoE	: Ministry of Education
MoEFCC	: Ministry of Environment, Forest and Climate Change
MoEWOE	: Ministry of Expatriates' Welfare and Overseas Employment
MoFood	: Ministry of Food
MoFA	: Ministry of Foreign Affairs
MoFL	: Ministry of Fisheries and Livestock
MoHA	: Ministry of Home Affairs
MoHFW	: Ministry of Health and Family Welfare

MoHPW	: Ministry of Housing and Public Works
MoInd	: Ministry of Industries
MoInf	: Ministry of Information
MoL	: Ministry of Land
MoLE	: Ministry of Labour and Employment
MoPA	: Ministry of Public Administration
MoPME	: Ministry of Primary and Mass Education
MoR	: Ministry of Railways
MoRA	: Ministry of Religious Affairs
MoS	: Ministry of Shipping
MoST	: Ministry of Science and Technology
MoSW	: Ministry of Social Welfare
MoTJ	: Ministry of Textiles and Jute
MoWCA	: Ministry of Women and Children Affairs
MoWR	: Ministry of Water Resources
MoYS	: Ministry of Youth and Sports
NARS	: National Agricultural Research System
NASP	: National AIDS/STD Programme
NASS	: National Academy of Social Services
NAW	: National Accounting Wing
NBR	: National Board of Revenue
NCTB	: National Curriculum and Textbook Board
NCDC	: Non-Communicable Disease Control unit
NGOAB	: NGO Affairs Bureau
NHRC	: National Human Rights Commission of Bangladesh
NHS	: National Hygiene Survey
NIMH	: National Institute of Mental Health
NIPORT	: National Institute of Population Research and Training

NMEP	: National Malaria Elimination Program
NMS	: National Nutrient Survey
NSA	: National Student Assessment
NTP	: National Tuberculosis Control Program
OECD	: Organisation for Economic Co-operation and Development
PA	: Partner Agency
PD	: Power Division
PHC	: Population and Housing Census
PID	: Physical Infrastructure Division, Planning Commission
PMO	: Prime Minister's Office
PPPA	: Public Private Partnership Authority
Prog. D	: Programming Division
PSD	: Public Security Division
PTD	: Posts and Telecommunications Division
PWD	: Public Works Department
QLFS	: Quarterly Labour Force Survey
RAJUK	: Rajdhani Unnayan Karttripakkha
RDCD	: Rural Development and Co-operatives Division
RTHD	: Road Transport and Highways Division
SCP	: Sustainable Consumption and Production
SDGs	: Sustainable Development Goals
SHED	: Secondary and Higher Education Division
SEID	: Socio Economic Infrastructure Division, Planning Commission
SID	: Statistics and Informatics Division
SMI	: Survey of Manufacturing Industries
SPARRSO	: Bangladesh Space Research and Remote Sensing Organization
SREDA	: Sustainable and Renewable Energy Development Authority
SRD	: Survey on Research and Development

SRDI	: Soil Resource Development Institute
SSD	: Security Service Division
SVRS	: Sample Vital Registration System
TMED	: Technical and Madrasah Education Division
TSA	: Tourism Satellite Account
TUS	: Time Use Survey
UDD	: Urban Development Directorate
UESD	: Utilization of Essential Service Delivery
UGC	: University Grants Commission
UNAIDS	: United Nations Programme on HIV and AIDS
UNDP	: United Nations Development Programme
UNFCCC	: United Nations Framework Convention on Climate Change
UN-Habitat	: United Nations Human Settlement Programme
UNJMP	: WHO/UNICEF Joint Monitoring Programme for Water Supply and Sanitation
UNSC	: UN Statistical Commission
UNSTATS	: United Nations Statistics Division
UPR	: Universal Periodic Review
VAW	: Violence Against Women
WARPO	: Water Resources Planning Organization
WASA	: Water Supply & Sewerage Authority
WB	: World Bank
WDB	: Water Development Board
WHO	: World Health Organization
WTO	: World Trade Organization



NO
POVERTY 1

SDG – 1: End poverty in all its forms everywhere

Coordinating Ministry/Division	Lead and Co-Lead Ministry/Division			
General Economics Division (GED)	Cabinet Division (CD), Finance Division (FD), Local Government Division (LGD), Ministry of Disaster Management and Relief (MoDMR), Ministry of Environment, Forest and Climate Change (MoEFCC) and Rural Development and Co-operatives Division (RDCCD)			
Targets and Indicators	Lead and Co-Lead Ministry/Division	Associate Ministry/Division	Data Sources	Custodian and Partner Agency
1.1 By 2030, eradicate extreme poverty for all people everywhere, currently measured as people living on less than \$1.25 a day Lead: CD (leading the NSSS) Co-Lead: GED (as NPFP)				
1.1.1 Proportion of the population living below the international poverty line by sex, age, employment status and geographic location (urban/rural)	Lead: CD Co-Lead: GED	ERD; FD; FID (BB); LGD; MoA; MoFood; MoDMR; MoEWOE; MoFL; MoInd; MoLE; MoSW; MoYS; PMO; RDCCD; SID; MoWCA, MoCHTA; MoLWA	a) PovcalNet, WB b) BBS (HIES), SID	CA: World Bank PA: ILO
1.2 By 2030, reduce at least by half the proportion of men, women and children of all ages living in poverty in all its dimensions according to national definitions Lead: CD (leading the NSSS) Co-Lead: GED (as NPFP)				
1.2.1 Proportion of population living below the national poverty line, by sex and age	Lead: CD Co-Lead: GED	ERD; FD; LGD; MoA; MoFood; MoCHTA; MoDMR; MoEWOE; MoFL; HSD; MEFWD; MoInd; MoRA; MoLE; MoSW; MoWCA; MoYS; PMO; RDCCD; SID	BBS (HIES), SID BBS (NAW), SID	CA: World Bank PA: UNICEF
1.2.2 Proportion of men, women and children of all ages living in poverty in all its dimensions according to national definitions	Lead: CD Co-Lead: GED	ERD; FD; LGD; MoA; MoFood; MoCHTA; MoDMR; MoEWOE; MoFL; HSD; MEFWD; MoInd; MoRA; MoLE; MoSW; MoWCA; MoYS; PMO; RDCCD; SID	a) BBS (MICS/ SVRS), SID	CA: National Government PA: UNICEF, World Bank, UNDP
1.3 Implement nationally appropriate social protection systems and measures for all, including floors, and by 2030 achieve substantial coverage of the poor and the vulnerable Lead: CD (leading the NSSS) Co-Lead: GED (as NPFP)				

Targets and Indicators	Lead and Co-Lead Ministry/ Division	Associate Ministry/ Division	Data Sources	Custodian and Partner Agency
1.3.1 Proportion of population covered by social protection floors/systems, by sex, distinguishing children, unemployed persons, older persons, persons with disabilities, pregnant women, newborns, work-injury victims and the poor and the vulnerable	Lead: CD Co-Lead: GED	FID (BB); FD; ICTD; LGD; MoA; MoFood; MoEWOE; MoCHTA; MoCA; MoDMR; SHED; TMED; MoFL; HSD; MEFWD; MoLE; MoLWA; MoPME; MoSW; SID MoWCA; MoYS; RDCD	a) BBS (HIES/ NHD), SID	CA: ILO PA: World Bank
1.4 By 2030, ensure that all men and women, in particular the poor and the vulnerable, have equal rights to economic resources, as well as access to basic services, ownership and control over land and other forms of property, inheritance, natural resources, appropriate new technology and financial services, including microfinance Lead: CD Co-Lead: RDCD				
1.4.1 Proportion of population living in households with access to basic services	Lead: CD Co-Lead: LGD	FID (BB); FD; ICTD; LJD; LPAD; MoA; MoEFCC; MoFL; MoL; MoWR; MoYS; MoEWOE; MoWCA; MoInd; MoCHTA; MoLWA; SID; RDCD	a) BBS (MICS/ SVRS/ HIES/ PHC), SID	CA: UN-Habitat PA: UNICEF, WHO
1.4.2 Proportion of total adult population with secure tenure rights to land, (a) with legally recognized documentation, and (b) who perceive their rights to land as secure, by sex and type of tenure	Lead: MoL Co-Lead: LJD	CD; FD; ICTD; LGD; MoA; MoEFCC; MoFL; MoL; MoWR; MoYS; MoEWOE; MoWCA; MoInd; MoCHTA; MoLWA; SID	a) BBS (ASC/ CPHS), SID	CA: World Bank, UN-Habitat PA: FAO, UNSD, UN Women, UNEP, IFAD
1.5 By 2030, build the resilience of the poor and those in vulnerable situations and reduce their exposure and vulnerability to climate-related extreme events and other economic, social and environmental shocks and disasters Lead: MoEFCC Co-Lead: MoDMR				
1.5.1 Number of deaths, missing persons and directly affected persons attributed to disasters per 100,000 population	Lead: MoDMR Co-Lead: MoEFCC	SSD; MoInf; PTD; SHED; TMED; MoEWOE; MoFood; HSD; MEFWD; MoSW; MoFL; MoWR; LGD; MoLWA; MoWCA; BB; SID; MoA	a) BBS (BDRHS), SID b) DDM, MoDMR	CA: UNDRR PA: WMO, UNFCCC, UNEP (UNDP, WFP, WHO)
1.5.2 Direct economic loss attributed to disasters in relation to global gross domestic product (GDP)	Lead: MoDMR Co-Lead: MoEFCC	SSD; MoInf; PTD; SHED; TMED; MoEWOE; MoFood; HSD; MEFWD; MoSW; MoFL; MoWR; LGD; MoLWA; MoWCA; BB; SID; MoA	a) BBS (BDRHS), SID	CA: UNDRR PA: UNEP (UNDP)

Targets and Indicators	Lead and Co-Lead Ministry/ Division	Associate Ministry/ Division	Data Sources	Custodian and Partner Agency
1.5.3 Number of countries that adopt and implement national disaster risk reduction strategies in line with the Sendai Framework for Disaster Risk Reduction 2015–2030	Lead: MoDMR	SSD; MoInf; PTD; SHED; TMED; MoEWOE; MoFood; HSD; MEFWD; MoSW; MoFL, MoWR; LGD; MoLWA; MoWCA; BB; SID; MoA	a) MoDMR	CA: UNDRR PA: UN-Habitat, UNEP
1.5.4 Proportion of local governments that adopt and implement local disaster risk reduction strategies in line with national disaster risk reduction strategies	Lead: LGD Co-Lead: MoDMR	SSD; MoInf; PTD; SHED; TMED; MoEWOE; MoFood; HSD; MEFWD; MoSW; MoFL, MoWR; MoLWA; MoWCA; MoA	a) MoDMR	CA: UNDRR PA: UNEP, UN-Habitat, (UNDP)
1.a Ensure significant mobilization of resources from a variety of sources, including through enhanced development cooperation, in order to provide adequate and predictable means for developing countries, in particular least developed countries, to implement programmes and policies to end poverty in all its dimensions Lead: FD				
1.a.1 Total official development assistance grants from all donors that focus on poverty reduction as a share of the recipient country's gross national income	Lead: FD	ERD; MoFA; PD; IRD; GED	a) ERD (Administrative Data)	CA: OECD, UNDP
1.a.2 Proportion of total government spending on essential services (education, health and social protection)	Lead: FD	SHED; TMED; HSD; MEFWD; CD; GED, MoPME	a) FD (Administrative Data)	CA: UNESCO, ILO, WHO
1.b Create sound policy frameworks at the national, regional and international levels, based on pro-poor and gender-sensitive development strategies, to support accelerated investment in poverty eradication actions Lead: GED				
1.b.1 Pro-poor public social spending	Lead: FD Co-Lead: MoSW	SHED; TMED; HSD; MEFWD; CD; GED	a) FD b) BBS (HIES), SID	CA: UNICEF

SDG –2: End hunger, achieve food security and improved nutrition and promote sustainable agriculture

Coordinating Ministry/Division	Lead and Co-Lead Ministry/Division
Ministry of Agriculture (MoA)	Ministry of Food (MoFood), Health Services Division (HSD), Ministry of Commerce (MoC), Finance Division (FD), Ministry of Industries (MoInd), Ministry of Fisheries and Livestock (MoFL) and Economic Relations Division (ERD)

Targets and Indicators	Lead and Co-Lead Ministry/Division	Associate Ministry/Division	Data Sources	Custodian and Partner Agency
2.1 By 2030, end hunger and ensure access by all people, in particular the poor and people in vulnerable situations, including infants, to safe, nutritious and sufficient food all year round Lead: MoA Co-Lead: MoFL, MoFood				
2.1.1 Prevalence of undernourishment	Lead: MoA Co-Leads: MoFL; MoFood	MoDMR; HSD; MEFWD; MoInd; MoWCA; MoInf; SHED; TMED; MoPME; SID	a) BBS (HIES), SID b) FAO	CA: FAO
2.1.2 Prevalence of moderate or severe food insecurity in the population, based on the Food Insecurity Experience Scale (FIES)	Lead: MoA Co-Leads: MoFL; MoFood	MoDMR; HSD; MEFWD; MoInd; MoWCA; MoInf; SHED; TMED; MoPME; SID	a) BBS (FIES/HIES/ SVRS/ASC), SID	CA: FAO PA: (WFP)
2.2 By 2030, end all forms of malnutrition, including achieving, by 2025, the internationally agreed targets on stunting and wasting in children under 5 years of age, and address the nutritional needs of adolescent girls, pregnant and lactating women and older persons Lead: HSD Co-Lead: MoFood				
2.2.1 Prevalence of stunting (height for age <-2 standard deviation from the median of the World Health Organization (WHO) Child Growth Standards) among children under 5 years of age	Lead: HSD Co-Lead: MEFWD	MoFood; MoA; MoDMR; MoFL; MoInd; MoSW; MoWCA; MoInf; SHED; TMED; MoPME; SID	a) BBS (MICS), SID	CA: UNICEF, WHO
2.2.2 Prevalence of malnutrition (weight for height >+2 or <-2 standard deviation from the median of the WHO Child Growth Standards) among children under 5 years of age, by type (wasting and overweight)	Lead: HSD Co-Lead: MEFWD, MoFood	MoA; MoDMR; MoFL; MoInd; MoSW;; MoWCA; MoInf; SHED; TMED; MoPME; SID	a) BBS (MICS), SID	CA: UNICEF, WHO

Targets and Indicators	Lead and Co-Lead Ministry/ Division	Associate Ministry/ Division	Data Sources	Custodian and Partner Agency
2.2.3 Prevalence of anemia in women aged 15 to 49 years, by pregnancy status (percentage)	Lead: HSD Co-Lead: MEFWD	MoFood; MoA; MoDMR; MoFL; MoInd; MoSW; MoWCA; MoInf; SHED; TMED; MoPME; SID	a) BBS (MICS/ HMSS), SID b) IPHN (NMS), DGHS c) NIPORT (BDHS), MEFWD	CA: WHO
2.3 By 2030, double the agricultural productivity and incomes of small-scale food producers, in particular women, indigenous peoples, family farmers, pastoralists and fishers, including through secure and equal access to land, other productive resources and inputs, knowledge, financial services, markets and opportunities for value addition and non-farm employment Lead: MoA Co-Lead: MoFL				
2.3.1 Volume of production per labour unit by classes of farming/pastoral/forestry enterprise size	Lead: MoA Co-Lead: MoFL	FD; FID (BB); LGD; MoCHTA; MoDMR; MoFood; HSD; MEFWD; MoInd (SMEF); MoL; MoSW; MoWCA; MoEFCC	a) BBS (ASC/ Agriculture Production Survey/ Cost of Production Survey), SID	CA: FAO
2.3.2 Average income of small-scale food producers, by sex and indigenous status	Lead: MoA Co-Lead: MoFL	SHED; TMED; MoInd; RDCD; SID	a) BBS (ASC/ Cost of Production Survey), SID	CA: FAO PA: World Bank
2.4 By 2030, ensure sustainable food production systems and implement resilient agricultural practices that increase productivity and production, that help maintain ecosystems, that strengthen capacity for adaptation to climate change, extreme weather, drought, flooding and other disasters and that progressively improve land and soil quality Lead: MoA				
2.4.1 Proportion of agricultural area under productive and sustainable agriculture	Lead: MoA	MoEFCC; MoL; MoWR; MoDMR; MoInd; MoFood; LGD; SID	a) BBS (ASC/ Agriculture Production Survey, SID	CA: FAO
2.5 By 2020, maintain the genetic diversity of seeds, cultivated plants and farmed and domesticated animals and their related wild species, including through soundly managed and diversified seed and plant banks at the national, regional and international levels, and promote access to and fair and equitable sharing of benefits arising from the utilization of genetic resources and associated traditional knowledge, as internationally agreed Lead: MoA Co-Lead: MoFL				
2.5.1 Number of (a) plant and (b) animal genetic resources for food and agriculture secured in either medium- or long-term conservation facilities	Lead: MoA Co-Lead: MoFL	MoC; MoEFCC; MoFA	a) BINA, MoA b) BARI, MoA c) BRRI, MoA d) BLRI, MoFL e) MoST f) BFRI, MoEFCC g) BJRI, MoA h) FRI, MoFL	CA: FAO

Targets and Indicators	Lead and Co-Lead Ministry/ Division	Associate Ministry/ Division	Data Sources	Custodian and Partner Agency
2.5.2 Proportion of local breeds classified as being at risk of extinction	Lead: MoFL Co-Lead: MoA	MoC; MoEFCC; MoFA	a) BLRI, MoFL b) GDAGR, FAO	CA: FAO
2.a Increase investment, including through enhanced international cooperation, in rural infrastructure, agricultural research and extension services, technology development and plant and livestock gene banks in order to enhance agricultural productive capacity in developing countries, in particular least developed countries Lead: MoA				
2.a.1 The agriculture orientation index for government expenditures	Lead: MoA	FD; LGD; ERD; MoFL; MoFA; PD; GED	a) BBS (NAW), SID b) FAO	CA: FAO
2.a.2 Total official flows (official development assistance plus other official flows) to the agriculture sector	Lead: ERD	LGD; MoFL; MoA	a) ERD (Administrative Data)	CA: OECD PA: FAO
2.b Correct and prevent trade restrictions and distortions in world agricultural markets, including through the parallel elimination of all forms of agricultural export subsidies and all export measures with equivalent effect, in accordance with the mandate of the Doha Development Round Lead: MoC				
2.b.1 Agricultural export subsidies	Lead: FD Co-Lead: MoC	MoA; BB	a) BB (Administrative Data), FID	CA: WTO PA: IFAD, FAO
2.c Adopt measures to ensure the proper functioning of food commodity markets and their derivatives and facilitate timely access to market information, including on food reserves, in order to help limit extreme food price volatility Lead: MoC Co-Lead: MoFood				
2.c.1 Indicator of food price anomalies	Lead: MoC Co-Lead: MoFood	MoInf; MoPA; SID	a) BBS (NAW-Prices and Wages), SID b) FAO	CA: FAO



GOOD HEALTH
AND WELL-BEING 3

SDG – 3: Ensure healthy lives and promote well-being for all at all ages

Coordinating Ministry/Division	Lead and Co-Lead Ministry/Division
Health Services Division (HSD)	Medical Education and Family Welfare Division (MEFWD), Road Transport and Highways Division (RTHD), Local Government Division (LGD), Environment, Forest and Climate Change (MoEFCC), Security Service Division (SSD) and Economic Relations Division (ERD)

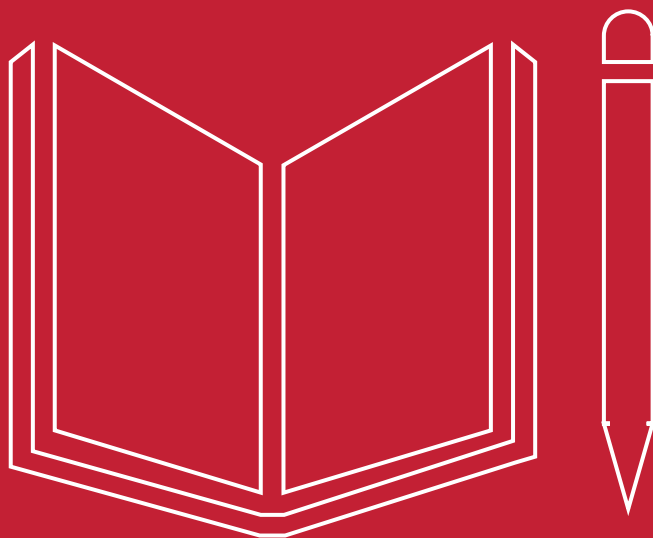
Targets and Indicators	Lead and Co-Lead Ministry/Division	Associate Ministry/Division	Data Sources	Custodian and Partner Agency
3.1 By 2030, reduce the global maternal mortality ratio to less than 70 per 100,000 live births Lead: HSD Co-Lead: MEFWD				
3.1.1 Maternal mortality ratio	Lead: HSD Co-Lead: MEFWD	LGD; MoInf; MoSW; MoWCA; SID	a) BBS (SVRS/PHC), SID	CA: WHO PA: UNICEF, UNFPA, DESA Population Division, World Bank
3.1.2 Proportion of births attended by skilled health personnel	Lead: HSD Co-Lead: MEFWD	LGD; MoInf; SID	a) BBS (MICS/ SVRS/HMSS), SID	CA: UNICEF, WHO PA: UNFPA
3.2 By 2030, end preventable deaths of newborns and children under 5 years of age, with all countries aiming to reduce neonatal mortality to at least as low as 12 per 1,000 live births and under-5 mortality to at least as low as 25 per 1,000 live births Lead: HSD Co-Lead: MEFWD				
3.2.1 Under-5 mortality rate	Lead: HSD Co-Lead: MEFWD	MoInd; MoInf; MoPME; MoWCA; SID	a) BBS (SVRS/PHC), SID	CA: UNICEF PA: DESA Population Division, World Bank, WHO
3.2.2 Neonatal mortality rate	Lead: HSD Co-Lead: MEFWD	LGD; MoInf; MoWCA; SID	a) BBS (SVRS/PHC), SID	CA: UNICEF PA: WHO, UNFPA, World Bank
3.3 By 2030, end the epidemics of AIDS, tuberculosis, malaria and neglected tropical diseases and combat hepatitis, water-borne diseases and other communicable diseases Lead: HSD Co-Lead: MEFWD				

Targets and Indicators	Lead and Co-Lead Ministry/ Division	Associate Ministry/ Division	Data Sources	Custodian and Partner Agency
3.3.1 Number of new HIV infections per 1,000 uninfected population, by sex, age and key populations	Lead: HSD Co-Lead: MEFWD	MoInf; SHED; TMED; MoPME; MoYS	a) DGHS (NASP), HSD b) IEDCR, HSD c) UNAIDS	CA: UNAIDS PA: WHO
3.3.2 Tuberculosis incidence per 100,000 population	Lead: HSD Co-Lead: MEFWD	MoInf; SHED; TMED; SID	a) NTP, DGHS, HSD b) WHO c) BBS (HMSS), SID	CA: WHO
3.3.3 Malaria incidence per 1,000 population	Lead: HSD Co-Lead: MEFWD	MoInf; SID	a) DGHS (NMEP), HSD b) BBS (HMSS), SID	CA: WHO
3.3.4 Hepatitis B incidence per 100,000 population	Lead: HSD Co-Lead: MEFWD	MoInf; SID	a) BBS (HMSS), SID b) DGHS (CDC), HSD	CA: WHO
3.3.5 Number of people requiring interventions against neglected tropical diseases	Lead: HSD Co-Lead: MEFWD	MoInf; SHED; TMED	a) DGHS (CDC), HSD b) WHO	CA: WHO
3.4 By 2030, reduce by one third premature mortality from non-communicable diseases through prevention and treatment and promote mental health and well-being Lead: HSD Co-Lead: MEFWD				
3.4.1 Mortality rate attributed to cardiovascular disease, cancer, diabetes or chronic respiratory disease	Lead: HSD Co-Lead: MEFWD	SHED; TMED; MoInf; MoWCA; SID	a) DGHS (NCDC/ MIS), HSD b) DGHS (MIS/ NCDC), HSD c) BBS (SVRS), SID d) WHO	CA: WHO
3.4.2 Suicide mortality rate	Lead: HSD Co-Lead: PSD	MEFWD; MoInf; SID; MoRA; MoYS; MoSW	a) BP, PSD	CA: WHO
3.5 Strengthen the prevention and treatment of substance abuse, including narcotic drug abuse and harmful use of alcohol Lead: SSD				
3.5.1 Coverage of treatment interventions (pharmacological, psychosocial and rehabilitation and aftercare services) for substance use disorders	Lead: SSD	HSD; MEFWD; MoInf; MoRA; MoYS	a) DNC, SSD b) DGHS(MIS), HSD	CA: WHO, UNODC
3.5.2 Alcohol per capita consumption (aged 15 years and older) within a calendar year in litres of pure alcohol	Lead: SSD	HSD; MEFWD; MoInf; MoRA; MoYS	a) DNC, SSD b) WHO	CA: WHO

Targets and Indicators	Lead and Co-Lead Ministry/ Division	Associate Ministry/ Division	Data Sources	Custodian and Partner Agency
3.6 By 2020, halve the number of global deaths and injuries from road traffic accidents Lead: RTHD				
3.6.1 Death rate due to road traffic injuries	Lead: RTHD	BD; SHED; TMED; SSD; MoInf; LGD; CD; MoPME; HSD; MEFWD	a) BBS (SVRS), SID b) BP, PSD	CA: WHO PA: UNECE
3.7 By 2030, ensure universal access to sexual and reproductive health-care services, including for family planning, information and education, and the integration of reproductive health into national strategies and programmes Lead: MEFWD Co-Lead: HSD				
3.7.1 Proportion of women of reproductive age (aged 15–49 years) who have their need for family planning satisfied with modern methods	Lead: MEFWD Co-Lead: HSD	LGD; SHED; TMED; MoInf; MoLE; MoRA; SID	a) BBS (MICS/ SVRS), SID b) NIORT (BDHS), MEFWD	CA: DESA Population Division (UNFPA) PA: UNFPA, WHO, UNICEF
3.7.2 Adolescent birth rate (aged 10–14 years; aged 15–19 years) per 1,000 women in that age group	Lead: MEFWD Co-Lead: HSD	LGD; MoInf; MoWCA; SID	a) BBS (SVRS/ MICS/PHC), SID	CA: DESA Population Division (UNFPA) PA: UNFPA, WHO, UNICEF
3.8 Achieve universal health coverage, including financial risk protection, access to quality essential health-care services and access to safe, effective, quality and affordable essential medicines and vaccines for all Lead: HSD Co-Lead: MEFWD				
3.8.1 Coverage of essential health services	Lead: HSD Co-Lead: MEFWD	FID; LGD; MoC; MoSW; MoWCA; MoST; MoInd	a) DGHS, HSD b) NIORT (BDHS), MEFWD c) HEU, HSD e) BBS (MICS/ SVRS), SID f) DGHS (STEPS), HSD	CA: WHO PA: UNICEF, UNFPA, DESA Population Division
3.8.2 Proportion of population with large household expenditures on health as a share of total household expenditure or income	Lead: HSD Co-Lead: MEFWD	FD; LGD; MoSW; SID	a) BBS (HIES), SID b) BNHA, HEU	CA: WHO, World Bank
3.9 By 2030, substantially reduce the number of deaths and illnesses from hazardous chemicals and air, water and soil pollution and contamination Lead: MoEFCC				

Targets and Indicators	Lead and Co-Lead Ministry/ Division	Associate Ministry/ Division	Data Sources	Custodian and Partner Agency
3.9.1 Mortality rate attributed to household and ambient air pollution	Lead: MoEFCC	HSD; MEFWD; SID	a) DGHS, HSD b) MoLE c) WHO d) BBS (SVRS/ HMSS), SID	CA: WHO PA: UNEP
3.9.2 Mortality rate attributed to unsafe water, unsafe sanitation and lack of hygiene (exposure to unsafe Water, Sanitation and Hygiene for All (WASH) services)	Lead: LGD	HSD; MEFWD; MoEFCC; MoInf; MoPME	a) DGHS, HSD b) WHO c) BBS (SVRS/ HMSS), SID	CA: WHO PA: UNEP
3.9.3 Mortality rate attributed to unintentional poisoning	Lead: HSD Co-Lead: MEFWD	MoInf; MoRA	a) DGHS, HSD b) WHO	CA: WHO PA: UNEP
3.a Strengthen the implementation of the World Health Organization Framework Convention on Tobacco Control in all countries, as appropriate Lead: HSD Co-Lead: MEFWD				
3.a.1 Age-standardized prevalence of current tobacco use among persons aged 15 years and older	Lead: HSD	MoInf; PSD	a) BBS (GATS/ HMSS), SID	CA: WHO, WHO-FCTC
3.b Support the research and development of vaccines and medicines for the communicable and non-communicable diseases that primarily affect developing countries, provide access to affordable essential medicines and vaccines, in accordance with the Doha Declaration on the TRIPS Agreement and Public Health, which affirms the right of developing countries to use to the full the provisions in the Agreement on Trade-Related Aspects of Intellectual Property Rights regarding flexibilities to protect public health, and, in particular, provide access to medicines for all Lead: Lead: HSD Co-Lead: MEFWD				
3.b.1 Proportion of the target population covered by all vaccines included in their national programme	Lead: HSD Co-Lead: MEFWD	MoC; MoFA; FD	a) DGHS (EPI Coverage Evaluation Survey), HSD b) NIPOrt (BDHS), MEFWD	CA: WHO, UNICEF
3.b.2 Total net official development assistance to medical research and basic health sectors	Lead: ERD	HSD; MEFWD; FD	a) ERD b) MEFWD c) HSD	CA: OECD PA: WHO
3.b.3 Proportion of health facilities that have a core set of relevant essential medicines available and affordable on a sustainable basis	Lead: HSD Co-Lead: MEFWD	LGD; MoC; MoSW; MoWCA; MoST; MoInd	a) NIPOrt (BHFS), MEFWD b) HAI, WHO	CA: WHO
3.c Substantially increase health financing and the recruitment, development, training and retention of the health workforce in developing countries, especially in least developed countries and small island developing States Lead: HSD Co-Lead: MEFWD				

Targets and Indicators	Lead and Co-Lead Ministry/ Division	Associate Ministry/ Division	Data Sources	Custodian and Partner Agency
3.c.1 Health worker density and distribution	Lead: HSD Co-Lead: MEFWD	FD; MoPA ; ERD; PD; SEID; BB	a) HSD (HRB) b) DGHS (MIS), HSD c) WHO	CA: WHO
3.d Strengthen the capacity of all countries, in particular developing countries, for early warning, risk reduction and management of national and global health risks Lead: HSD Co-Lead: MEFWD; LGD				
3.d.1 International Health Regulations (IHR) capacity and health emergency preparedness	Lead: HSD Co-Lead: MEFWD; LGD	ERD; MoFA; MoInf; MoInd	a) DGHS (CDC), HSD b) WHO	CA: WHO
3.d.2 Percentage of bloodstream infections due to selected antimicrobial-resistant organisms	Lead: HSD Co-Lead: MEFWD	SHED; TMED; MoInf; SID	a) DGHS (CDC), HSD b) IEDCR, c) DGDA d) WHO	CA: WHO



QUALITY
EDUCATION 4

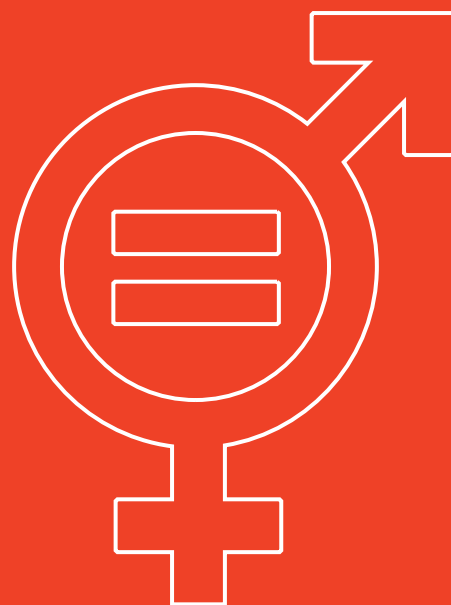
SDG – 4: Ensure inclusive and equitable quality education and promote lifelong learning opportunities for all

Coordinating Ministry/Division	Lead and Co-Lead Ministry/Division
Secondary and Higher Education Division (SHED)	Technical and Madrasah Education Division (TMED), Ministry of Primary and Mass Education (MoPME), Health Services Division (HSD), Ministry of Social Welfare (MoSW) and Economic Relations Division (ERD)

Targets and Indicators	Lead and Co-Lead Ministry/Division	Associate Ministry/Division	Data Sources	Custodian and Partner Agency
4.1 By 2030, ensure that all girls and boys complete free, equitable and quality primary and secondary education leading to relevant and effective learning outcomes Lead: MoPME Co-Lead: SHED, TMED				
4.1.1 Proportion of children and young people (a) in grades 2/3; (b) at the end of primary; and (c) at the end of lower secondary achieving at least a minimum proficiency level in (i) reading and (ii) mathematics, by sex	Lead: MoPME; Co-Lead: SHED, TMED	MoWCA; MoInf; MoSW; MoRA; HSD; MEFWD; LGD; MoYS; SID	a) BBS (LAS/MICS), SID b) DPE (NSA), MoPME c) DSHE (LASI/NASS), MoE	CA: UNESCO-UIS PA: OECD, (UNICEF)
4.1.2 Completion rate (primary education, lower secondary education, upper secondary education)	Lead: MoPME; Co-Lead: SHED, TMED	MoWCA; MoInf; MoSW; MoRA; HSD; MEFWD; LGD; MoYS; SID	a) BBS (LAS/MICS/HIES/EHS/SVRS), SID	CA: UNESCO-UIS
4.2 By 2030, ensure that all girls and boys have access to quality early childhood development, care and pre-primary education so that they are ready for primary education Lead: MoPME Co-Lead: HSD				
4.2.1 Proportion of children aged 24-59 months who are developmentally on track in health, learning and psychosocial well-being, by sex	Lead: MoPME Co-Lead: HSD, MEFWD	MoSW; MoWCA; MoRA; LGD	a) BBS (MICS), SID	CA: UNICEF PA: UNESCO-UIS, OECD, World Bank, WHO
4.2.2 Participation rate in organized learning (one year before the official primary entry age), by sex	Lead: MoPME	MoInf; MoRA; LGD	a) BBS (LAS/PHC/EHS/MICS/SVRS), SID b) DPE (APSC), MoPME	CA: UNESCO-UIS PA: UNICEF, OECD
4.3 By 2030, ensure equal access for all women and men to affordable and quality technical, vocational and tertiary education, including university Lead: SHED, TMED				

Targets and Indicators	Lead and Co-Lead Ministry/ Division	Associate Ministry/ Division	Data Sources	Custodian and Partner Agency
4.3.1 Participation rate of youth and adults in formal and non-formal education and training in the previous 12 months, by sex	Lead: TMED Co-Lead: SHED, MoPME	FD; MoEWOE; MoLE; MoYS; MoWCA; MoInd; MoTJ; SID	a) BBS (LAS/ PHC/ EHS/SVRS), SID b) BANBEIS (BES), MoE	CA: UNESCO-UIS PA: OECD, Eurostat, ILO
4.4 By 2030, substantially increase the number of youth and adults who have relevant skills, including technical and vocational skills, for employment, decent jobs and entrepreneurship Lead: MoE				
4.4.1 Proportion of youth and adults with information and communications technology (ICT) skills, by type of skill	Lead: TMED Co-Lead: SHED	ICTD; FD; MoEWOE; MoLE; MoYS; MoInd; BB; MoInf	a) BBS (LAS/MICS/ SVRS/ Access and use of ICT by Household and Individual Survey), SID	CA: UNESCO-UIS, ITU PA: OECD, ILO
4.5 By 2030, eliminate gender disparities in education and ensure equal access to all levels of education and vocational training for the vulnerable, including persons with disabilities, indigenous peoples and children in vulnerable situations Lead: SHED Co-Lead: MoPME, MoSW				
4.5.1 Parity indices (female/male, rural/urban, bottom/top wealth quintile and others such as disability status, indigenous peoples and conflict-affected, as data become available) for all education indicators on this list that can be disaggregated	Lead: SHED, Co-Leads: TMED; MoPME; MoSW	MoCHTA; MoWCA; MoRA; MoYS; SID	a) BANBEIS (BES), MoE b) DPE (APSC/ ASPR), MoPME c) BBS (EHS/MICS/ LAS), SID	CA: UNESCO-UIS PA: OECD
4.6 By 2030, ensure that all youth and a substantial proportion of adults, both men and women, achieve literacy and numeracy Lead: MoPME Co-Lead: SHED, TMED				
4.6.1 Proportion of population in a given age group achieving at least a fixed level of proficiency in functional (a) literacy and (b) numeracy skills, by sex	Lead: MoPME; Co-Lead: SHED, TMED	MoWCA; MoYS; MoInf; MoRA; MoSW; SID	a) BBS (LAS), SID	CA: UNESCO-UIS PA: World Bank, OECD
4.7 By 2030, ensure that all learners acquire the knowledge and skills needed to promote sustainable development, including, among others, through education for sustainable development and sustainable lifestyles, human rights, gender equality, promotion of a culture of peace and non-violence, global citizenship and appreciation of cultural diversity and of culture's contribution to sustainable development Lead: SHED				

Targets and Indicators	Lead and Co-Lead Ministry/ Division	Associate Ministry/ Division	Data Sources	Custodian and Partner Agency
4.7.1 Extent to which (i) global citizenship education and (ii) education for sustainable development are mainstreamed in (a) national education policies; (b) curricula; (c) teacher education; and (d) student assessment	Lead: SHED Co-Lead: TMED	FD, ICTD, LJD; MoCA; MoPME; MoRA; MoWCA; MoEFCC; MoInd; MoFA	SHED, MoE MoPME TMED NCTB	CA: UNESCO-UIS PA: OECD, UNEP, UN Women
4.a Build and upgrade education facilities that are child, disability and gender sensitive and provide safe, non-violent, inclusive and effective learning environments for all Lead: MoPME Co-Lead: MoSW				
4.a.1 Proportion of schools offering basic services, by type of service	Lead: MoPME Co-Lead: MoSW; SHED; TMED	MoWCA; SEID; LGD	a) BANBEIS (BES), MoE b) DPE (APSC), MoPME	CA: UNESCO-UIS PA: UNICEF, OECD, UNEP
4.b By 2020, substantially expand globally the number of scholarships available to developing countries, in particular least developed countries, small island developing States and African countries, for enrolment in higher education, including vocational training and information and communications technology, technical, engineering and scientific programmes, in developed countries and other developing countries Lead: ERD				
4.b.1 Volume of official development assistance flows for scholarships by sector and type of study	Lead: ERD	SHED; TMED; MoFA; MoST; MoPA	a) ERD b) UNDP (OECD Report)	CA: OECD, UNESCO PA: UNESCO-UIS
4.c By 2030, substantially increase the supply of qualified teachers, including through international cooperation for teacher training in developing countries, especially least developed countries and small island developing States Lead: SHED Co-Lead: TMED; MoPME				
4.c.1 Proportion of teachers with the minimum required qualifications, by education level	Lead: SHED Co-Lead: TMED, MoPME	MoFA; ERD	a) BANBEIS (BES), MoE b) DPE (APSC), MoPME	CA: UNESCO-UIS PA: OECD



GENDER
EQUALITY 5

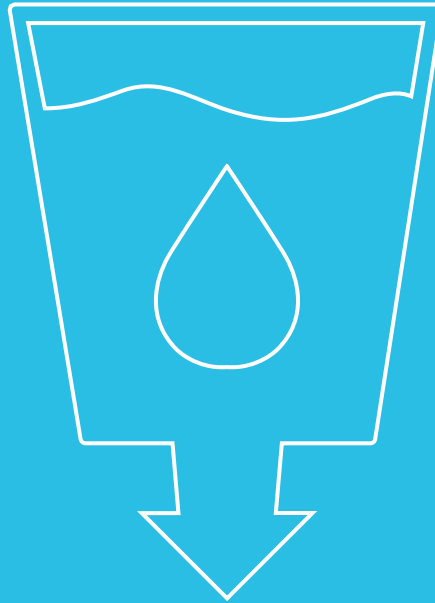
SDG– 5: Achieve gender equality and empower all women and girls

Coordinating Ministry/Division	Lead and Co-Lead Ministry/Division
Ministry of Women and Children Affairs (MoWCA)	Medical Education and Family Welfare Division (MEFWD), Ministry of Social Welfare (MoSW), Finance Division (FD) and Post and Telecommunication Division (PTD)

Targets and Indicators	Lead and Co-Lead Ministry/Division	Associate Ministry/Division	Data Sources	Custodian and Partner Agency
5.1 End all forms of discrimination against all women and girls everywhere Lead: MoWCA				
5.1.1 Whether or not legal frameworks are in place to promote, enforce and monitor equality and non-discrimination on the basis of sex	Lead: MoWCA	PSD; LJD; LPAD; MoInd; MoFA; MoLE; MoRA	a) MoWCA	CA: UN Women, World Bank, OECD Development Centre PA: OHCHR, UNESCO
5.2 Eliminate all forms of violence against all women and girls in the public and private spheres, including trafficking and sexual and other types of exploitation Lead: MoWCA				
5.2.1 Proportion of ever-partnered women and girls aged 15 years and older subjected to physical, sexual or psychological violence by a current or former intimate partner in the previous 12 months, by form of violence and by age	Lead: MoWCA	PSD; LJD; LPAD; SID; MoEWOE; MoFA; MoLE; MoRA	a) BBS (VAW Survey/GBVS), SID	CA: UNICEF, UN Women, UNFPA, WHO, UNODC PA: UNSD, UNDP, UNAIDS, UNESCO
5.2.2 Proportion of women and girls aged 15 years and older subjected to sexual violence by persons other than an intimate partner in the previous 12 months, by age and place of occurrence	Lead: MoWCA	PSD, SID	a) BBS (VAW Survey/GBVS), SID	CA: UNICEF, UN Women, UNFPA, WHO, UNODC PA: UNSD, UNDP, UNAIDS
5.3 Eliminate all harmful practices, such as child, early and forced marriage and female genital mutilation Lead: MoWCA				
5.3.1 Proportion of women aged 20–24 years who were married or in a union before age 15 and before age 18	Lead: MoWCA	SSD; MoInf; MoRA; MoFA; HSD; MEFWD; SID	a) BBS (SVRS/ MICS/GBVS/PHC), SID b) NIPOORT (BDHS), MEFWD	CA: UNICEF PA: WHO, UNFPA, UN Women, DESA Population Division
5.3.2 Proportion of girls and women aged 15–49 years who have undergone female genital mutilation/cutting, by age	Not relevant for Bangladesh			

Targets and Indicators	Lead and Co-Lead Ministry/ Division	Associate Ministry/ Division	Data Sources	Custodian and Partner Agency
5.4 Recognize and value unpaid care and domestic work through the provision of public services, infrastructure and social protection policies and the promotion of shared responsibility within the household and the family as nationally appropriate Lead: MoSW				
5.4.1 Proportion of time spent on unpaid domestic and care work, by sex, age and location	Lead: MoSW, Co-Lead: MoWCA	CD; GED; MoLE; SID	a) BBS (TUS/QLFS), SID	CA: UNSD, UN Women PA: ILO
5.5 Ensure women's full and effective participation and equal opportunities for leadership at all levels of decision-making in political, economic and public life Lead: MoWCA				
5.5.1 Proportion of seats held by women in (a) national parliaments and (b) local governments	Lead: LPAD Co-Lead: LGD	MoWCA; LJD; MoPA; MoInd	a) BPS b) LGD	CA: IPU, UN Women PA: World Bank
5.5.2 Proportion of women in managerial positions	Lead: MoWCA Co-Lead: LGD, MoPA	LJD; MoInd	a) BBS (QLFS), SID	CA: ILO
5.6 Ensure universal access to sexual and reproductive health and reproductive rights as agreed in accordance with the Programme of Action of the International Conference on Population and Development and the Beijing Platform for Action and the outcome documents of their review conferences Lead: MoWCA				
5.6.1 Proportion of women aged 15–49 years who make their own informed decisions regarding sexual relations, contraceptive use and reproductive health care	Lead: MEFWD Co-Lead: MoWCA		a) NIPOORT (BDHS), MEFW b) BBS (GBVS), SID	CA: UNFPA PA: UN Women, WHO, UNAIDS
5.6.2 Number of countries with laws and regulations that guarantee full and equal access to women and men aged 15 years and older to sexual and reproductive health care, information and education	Lead: MEFWD Co-Lead: MoWCA	LPAD; LJD; MoSW; MoFA	a) HDS, MoHFW d) MEFWD, MoHFW	CA: UNFPA PA: UN Women, DESA Population Division, WHO, UNAIDS
5.a Undertake reforms to give women equal rights to economic resources, as well as access to ownership and control over land and other forms of property, financial services, inheritance and natural resources, in accordance with national laws Lead: MoWCA				
5.a.1 (a) Proportion of total agricultural population with ownership or secure rights over agricultural land, by sex; and (b) share of women among owners or rights-bearers of agricultural land, by type of tenure	Lead: MoL Co-Lead: MoWCA	FID (BB); LJD; SID	a) BBS (ASC/ CPHS), SID	CA: FAO PA: UN Women, UNSD, UNEP, World Bank, UN- Habitat
5.a.2 Proportion of countries where the legal framework (including customary law) guarantees women's equal rights to land ownership and/or control	Lead: MoL Co-Lead: MoWCA	LPAD	a) LPAD	CA: FAO PA: World Bank, UN Women

Targets and Indicators	Lead and Co-Lead Ministry/ Division	Associate Ministry/ Division	Data Sources	Custodian and Partner Agency
5.b Enhance the use of enabling technology, in particular information and communications technology, to promote the empowerment of women Lead: MoWCA				
5.b.1 Proportion of individuals who own a mobile telephone, by sex	Lead: MoWCA Co-Lead: PTD	ICTD; SHED; TMED; SEID; SID; MoInd	a) BBS (SVRS/LAS/ QLFS/ Access and Use of ICT Survey/ PHC/ HIES/CPHS), SID	CA: ITU PA: UNDP
5.c Adopt and strengthen sound policies and enforceable legislation for the promotion of gender equality and the empowerment of all women and girls at all levels Lead: MoWCA				
5.c.1 Proportion of countries with systems to track and make public allocations for gender equality and women's empowerment	Lead: FD Co-Lead: MoWCA	SHED; TMED, LGD, SID, MoFA	a) FD	CA: UN Women, OECD, UNDP



CLEAN WATER AND SANITATION 6

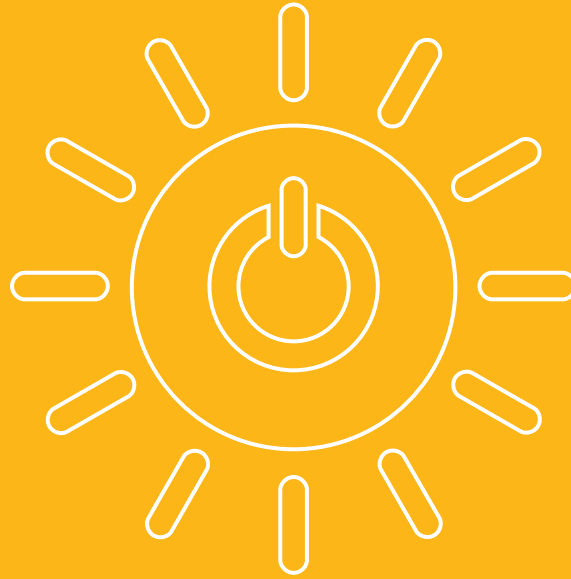
SDG – 6: Ensure availability and sustainable management of water and sanitation for all

Coordinating Ministry/Division	Lead and Co-Lead Ministry/Division
Local Government Division (LGD)	Ministry of Water Resources (MoWR), Ministry of Agriculture (MoA), Environment, Forest and Climate Change (MoEFCC), Ministry of Foreign Affairs (MoFA), Ministry of Industries (MoInd) and Economic Relations Division (ERD)

Targets and Indicators	Lead and Co-Lead Ministry/Division	Associate Ministry/Division	Data Sources	Custodian and Partner Agency
6.1 By 2030, achieve universal and equitable access to safe and affordable drinking water for all Lead: LGD				
6.1.1 Proportion of population using safely managed drinking water services	Lead: LGD	MoInf; MoPME; MoInd; SID	a) BBS (MICS/SVRS), SID	CA: WHO, UNICEF PA: UNEP, UN-Habitat
6.2 By 2030, achieve access to adequate and equitable sanitation and hygiene for all and end open defecation, paying special attention to the needs of women and girls and those in vulnerable situations Lead: LGD				
6.2.1 Proportion of population using (a) safely managed sanitation services and (b) a hand-washing facility with soap and water	Lead: LGD	SHED; TMED; MoInf; MoPME; MoWCA; PMO; MoFood; HSD; MEFWD; MoEFCC; SID	a) BBS (MICS/PHC/SVRS), SID	CA: WHO, UNICEF PA: UNEP
6.3 By 2030, improve water quality by reducing pollution, eliminating dumping and minimizing release of hazardous chemicals and materials, halving the proportion of untreated wastewater and substantially increasing recycling and safe reuse globally Lead: LGD Co-Lead: MoEFCC				
6.3.1 Proportion of domestic and industrial wastewater flows safely treated	Lead: LGD Co-Lead: MoEFCC; MoInd	MoFA; MoTJ; MoFood; MoWR; MoS	a) LGD (WASA for City Corporations) b) DoE, MoEFCC c) WARPO, MoWR	CA: WHO, UN-Habitat, UNSD PA: UNEP, OECD, Eurostat
6.3.2 Proportion of bodies of water with good ambient water quality	Lead: LGD Co-Lead: MoEFCC; MoInd	MoInd; MoFA; MoTJ; MoFood; MoWR; MoS	a) DoE, MoEFCC	CA: UNEP PA: UN-Water, UNDP
6.4 By 2030, substantially increase water-use efficiency across all sectors and ensure sustainable withdrawals and supply of freshwater to address water scarcity and substantially reduce the number of people suffering from water scarcity Lead: LGD Co-Lead: MoA, MoInd				

Targets and Indicators	Lead and Co-Lead Ministry/ Division	Associate Ministry/ Division	Data Sources	Custodian and Partner Agency
6.4.1 Change in water-use efficiency over time	Lead: LGD Co-Lead: MoA & MoInd	MoS; MoWR; MoFA	a) DPHE, LGD b) DoE, MoEFCC c) DAE, MoA d) DLS, MoFL e) DoF, MoFL f) WARPO, MoWR	CA: FAO PA: UNEP, IUCN, UNSD, OECD, Eurostat
6.4.2 Level of water stress: freshwater withdrawal as a proportion of available freshwater resources	Lead: LGD Co-Lead: MoA & MoInd	MoS; MoWR; MoFA	a) WDB, MoWR b) BADC/BMDA, MoA c) UNSC	CA: FAO PA: UNEP, IUCN, UNSD, OECD, Eurostat
6.5 By 2030, implement integrated water resources management at all levels, including through transboundary cooperation as appropriate Lead: MoWR Co-Lead: MoFA				
6.5.1 Degree of integrated water resources management	Lead: MoWR Co-Lead: MoFA	GED; LGD	a) WDB, MoWR	CA: UNEP PA: UN-Water, IUCN, Ramsar, UNDP
6.5.2 Proportion of transboundary basin area with an operational arrangement for water cooperation	Lead: MoWR Co-Lead: MoFA	GED; LGD	a) JRC, MoWR	CA: UNESCO-IHP, UNECE
6.6 By 2020, protect and restore water-related ecosystems, including mountains, forests, wetlands, rivers, aquifers and lakes Lead: MoWR				
6.6.1 Change in the extent of water-related ecosystems over time	Lead: MoEFCC Co-Lead: MoWR	CD; MoCHTA; MoFL; MoFA	a) DoE, MoEFCC b) WDB, MoWR c) BFD, MoEFCC d) WARPO, MoWR	CA: UNEP, Ramsar PA: UN-Water, IUCN, UNDP
6.a By 2030, expand international cooperation and capacity-building support to developing countries in water- and sanitation-related activities and programmes, including water harvesting, desalination, water efficiency, wastewater treatment, recycling and reuse technologies Lead: ERD Co-Lead: MoWR				
6.a.1 Amount of water- and sanitation-related official development assistance that is part of a government-coordinated spending plan	Lead: ERD, Co-Lead: MoWR	LGD; MoEFCC; MoFA; MoInd	a) ERD	CA: WHO, OECD PA: UNEP, UN-Water
6.b Support and strengthen the participation of local communities in improving water and sanitation management Lead: LGD				

Targets and Indicators	Lead and Co-Lead Ministry/ Division	Associate Ministry/ Division	Data Sources	Custodian and Partner Agency
6.b.1 Proportion of local administrative units with established and operational policies and procedures for participation of local communities in water and sanitation management	Lead: LGD	MoPA; AWRRIID; LGD; MoWR	a) DPHE, LGD	CA: WHO, OECD PA: UNEP



AFFORDABLE AND
CLEAN ENERGY

7

SDG – 7: Ensure access to affordable, reliable, sustainable and modern energy for all

Coordinating Ministry/Division	Lead and Co-Lead Ministry/Division
Power Division (PD) and Energy and Mineral Resources Division (EMRD)	Economic Relations Division (ERD)

Targets and Indicators	Lead and Co-Lead Ministry/Division	Associate Ministry/Division	Data Sources	Custodian and Partner Agency
7.1 By 2030, ensure universal access to affordable, reliable and modern energy services				
Lead: PD				
7.1.1 Proportion of population with access to electricity	Lead: PD	EMRD; MoST; MoFA	a) BBS (SVRS/MICS/PHC), SID	CA: World Bank PA: IEA, UN-Energy
7.1.2 Proportion of population with primary reliance on clean fuels and technology	Lead: EMRD Co-Lead: PD	MoST; MoInf	a) BBS (MICS/SVRS/PHC), SID	CA: WHO PA: UN-Energy
7.2 By 2030, increase substantially the share of renewable energy in the global energy mix				
Lead: PD				
7.2.1 Renewable energy share in the total final energy consumption	Lead: PD	ERD; MoFA; EMRD	a) SREDA, PD	CA: UNSD, IEA, IRENA, PA: World Bank, UN-Energy, ADB, EU
7.3 By 2030, double the global rate of improvement in energy efficiency				
Lead: PD Co-Lead: EMRD				
7.3.1 Energy intensity measured in terms of primary energy and GDP	Lead: EMRD Co-Lead: PD	ERD; MoFA; BERC	a) HCU, EMRD	CA: UNSD, IEA PA: World Bank, UN-Energy, ADB, EU
7.a By 2030, enhance international cooperation to facilitate access to clean energy research and technology, including renewable energy, energy efficiency and advanced and cleaner fossil-fuel technology, and promote investment in energy infrastructure and clean energy technology				
Lead: ERD				
7.a.1 International financial flows to developing countries in support of clean energy research and development and renewable energy production, including in hybrid systems	Lead: ERD	EMRD; MoEFCC; MoFA; MoST; BB	a) ERD	CA: OECD, IRENA PA: IEA, UN-Energy, UNEP

Targets and Indicators	Lead and Co-Lead Ministry/ Division	Associate Ministry/ Division	Data Sources	Custodian and Partner Agency
7.b By 2030, expand infrastructure and upgrade technology for supplying modern and sustainable energy services for all in developing countries, in particular least developed countries, small island developing States and landlocked developing countries, in accordance with their respective programmes of support Lead: PD				
7.b.1 Installed renewable energy-generating capacity in developing countries (in watts per capita)	Lead: PD	ERD; IED; MoFA; PID, MoInd; MoST	a) SREDA, PD	CA: IRENA PA: ADB, EU



DECENT WORK AND ECONOMIC GROWTH 8

SDG – 8: Promote sustained, inclusive and sustainable economic growth, full and productive employment and decent work for all

Coordinating Ministry/Division	Lead and Co-Lead Ministry/Division
Ministry of Labour and Employment (MoLE)	Finance Division (FD), Financial Institutions Division (FID), General Economics Division (GED), Ministry of Commerce (MoC), Ministry of Civil Aviation and Tourism (MoCAT), Environment, Forest and Climate Change (MoEFCC), Ministry of Youth and Sports (MoYS), Ministry of Agriculture (MoA), Ministry of Cultural Affairs (MoCA), Ministry of Industries (MoInd) and Economic Relations Division (ERD)

Targets and Indicators	Lead and Co-Lead Ministry/Division	Associate Ministry/Division	Data Sources	Custodian and Partner Agency
8.1 Sustain per capita economic growth in accordance with national circumstances and, in particular, at least 7 per cent gross domestic product growth per annum in the least developed countries Lead: GED Co-Lead: FD				
8.1.1 Annual growth rate of real GDP per capita	Lead: GED Co-Lead: FD, SID (BBS)	FID; MoA; MoCAT; MoC; MoFL; MoInd; PD; MoEWOE; BD; PMO; LGD; ICTD; SHED; TMED; RDCD	a) BBS (NAW), SID	CA: UNSD PA: World Bank, IMF
8.2 Achieve higher levels of economic productivity through diversification, technological upgrading and innovation, including through a focus on high-value added and labour-intensive sectors Lead: MoC Co-Lead: MoInd, MoA				
8.2.1 Annual growth rate of real GDP per employed person	Lead: MoC; Co-Lead: MoInd & MoA;	MoLE; MoEWOE; MoST; MoTJ; MoFL; ICTD; BB; SHED; TMED; SID; RDCD	a) BBS (NAW/ QLFS), SID b) ILO	CA: ILO PA: World Bank, UNSD
8.3 Promote development-oriented policies that support productive activities, decent job creation, entrepreneurship, creativity and innovation, and encourage the formalization and growth of micro-, small- and medium-sized enterprises, including through access to financial services Lead: GED				
8.3.1 Proportion of informal employment in total employment, by sector and sex	Lead: GED	AWRRID; FID (BB); IED; MoInd; MoLE; PID; PD; SEID; SID; MoST; MoYS; ICTD; MoEWOE; FD; RDCD	a) BBS (QLFS), SID	CA: ILO

Targets and Indicators	Lead and Co-Lead Ministry/ Division	Associate Ministry/ Division	Data Sources	Custodian and Partner Agency
8.4 Improve progressively, through 2030, global resource efficiency in consumption and production and endeavour to decouple economic growth from environmental degradation, in accordance with the 10-Year Framework of Programmes on Sustainable Consumption and Production, with developed countries taking the lead Lead: ERD Co-Lead: GED				
8.4.1 Material footprint, material footprint per capita, and material footprint per GDP	Lead: MoEFCC Co-Lead: ERD, GED	MoA; MoFL MoFood; BB; MoFA; MoInd	a) BBS (ECDS Cell), SID	CA: UNEP (UNDP) PA: OECD
8.4.2 Domestic material consumption, domestic material consumption per capita, and domestic material consumption per GDP	Lead: MoEFCC Co-Lead: ERD, GED	MoA; MoFL MoFood; BB; MoFA; MoInd	a) BBS (ECDS Cell)), SID	CA: UNEP PA: OECD (World Bank, ADB, EU, UNDP)
8.5 By 2030, achieve full and productive employment and decent work for all women and men, including for young people and persons with disabilities, and equal pay for work of equal value Lead: MoLE				
8.5.1 Average hourly earnings of employees, by sex, age, occupation and persons with disabilities	Lead: MoLE	LPAD; MoEWOE; BB; MoFA; MoInd; MoSW; MoWCA; MoYS; SHED; TMED; SID; RDCD	a) BBS (QLFS), SID	CA: ILO PA: UN Women
8.5.2 Unemployment rate, by sex, age and persons with disabilities	Lead: MoLE	LPAD; MoEWOE; BB; MoFA; MoInd; MoSW; MoWCA; MoYS; SHED; TMED; SID; RDCD	a) BBS (QLFS/PHC), SID	CA: ILO
8.6 By 2020, substantially reduce the proportion of youth not in employment, education or training Lead: MoYS Co-Lead: MoLE				
8.6.1 Proportion of youth (aged 15–24 years) not in education, employment or training	Lead: MoYS; Co-Lead: MoLE	SHED; TMED; MoEWOE; SID; MoInd; MoPME; ICTD; RDCD	a) BBS (QLFS), SID	CA: ILO
8.7 Take immediate and effective measures to eradicate forced labour, end modern slavery and human trafficking and secure the prohibition and elimination of the worst forms of child labour, including recruitment and use of child soldiers, and by 2025 end child labour in all its forms Lead: MoLE				
8.7.1 Proportion and number of children aged 5–17 years engaged in child labour, by sex and age	Lead: MoLE	MoEWOE; MoFA; PSD; MoWCA; SID; MoYS; MoSW	a) BBS (QLFS/Child Labour Survey/ PHC), SID	CA: ILO, UNICEF PA: IOM
8.8 Protect labour rights and promote safe and secure working environments for all workers, including migrant workers, in particular women migrants, and those in precarious employment Lead: MoLE				

Targets and Indicators	Lead and Co-Lead Ministry/ Division	Associate Ministry/ Division	Data Sources	Custodian and Partner Agency
8.8.1 Fatal and non-fatal occupational injuries per 100,000 workers, by sex and migrant status	Lead: MoLE	HSD; MEFWD; MoEWOE; MoFA; SSD, MoC, MoInd; MoTJ; SID	a) DIFE, MoLE b) BBS (QLFS), SID	CA: ILO
8.8.2 Level of national compliance with labour rights (freedom of association and collective bargaining) based on International Labour Organization (ILO) textual sources and national legislation, by sex and migrant status	Lead: MoLE	HSD; MEFWD; MoFA; SSD, MoC, MoInd; MoTJ	a) MoLE b) MoEWOE	CA: ILO
8.9 By 2030, devise and implement policies to promote sustainable tourism that creates jobs and promotes local culture and products Lead: MoCAT Co-Lead: MoCA				
8.9.1 Tourism direct GDP as a proportion of total GDP and in growth rate	Lead: MoCAT; Co-Lead: MoCA	SHED; TMED; MoInf; LGD; MoR; RTHD; MoEFCC; MoCHTA; BB; SID	a) BBS (NAW/ TSA Survey), SID	CA: UNWTO PA: UNEP (ILO & UNDP)
8.10 Strengthen the capacity of domestic financial institutions to encourage and expand access to banking, insurance and financial services for all Lead: FID				
8.10.1 (a) Number of commercial bank branches per 100,000 adults and (b) number of automated teller machines (ATMs) per 100,000 adults	Lead: FID	BB; PTD	a) BB, FID	CA: IMF PA: UNCDF
8.10.2 Proportion of adults (15 years and older) with an account at a bank or other financial institution or with a mobile-money-service provider	Lead: FID	BB; PTD	a) BB, FID b) BBS (PHC/HIES/ CPHS/SVRS)	CA: World Bank PA: UNCDF
8.a Increase Aid for Trade support for developing countries, in particular least developed countries, including through the Enhanced Integrated Framework for Trade-related Technical Assistance to Least Developed Countries Lead: MoC				
8.a.1 Aid for Trade commitments and disbursements	Lead: MoC	ERD; MoFA	a) ERD b) MoC c) WTO	CA: OECD PA: WTO-EIF (World Bank, IMF)
8.b By 2020, develop and operationalize a global strategy for youth employment and implement the Global Jobs Pact of the International Labour Organization Lead: MoYS Co-Lead: FD				
8.b.1 Existence of a developed and operationalized national strategy for youth employment, as a distinct strategy or as part of a national employment strategy	Lead: MoYS Co-Lead: MoLE	MoEWOE; MoFA; CD; SID	a) MoYS b) MoLE	CA: ILO PA: World Bank, OECD



INDUSTRY, INNOVATION
AND INFRASTRUCTURE 9

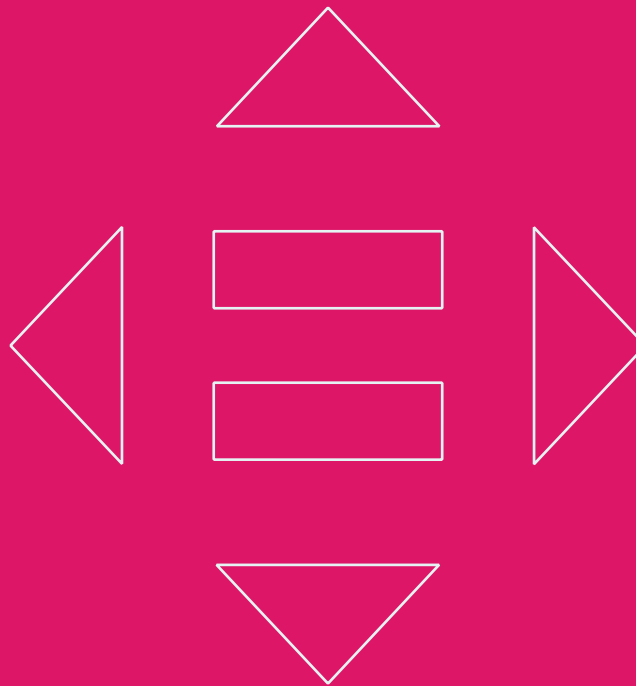
SDG – 9: Build resilient infrastructure, promote inclusive and sustainable industrialization and foster innovation

Coordinating Ministry/Division	Lead and Co-Lead Ministry/Division
Ministry of Industries (MoInd)	Information and Communication Technology Division (ICTD), Ministry of Science and Technology (MoST), Road Transport and Highways Division (RTHD), Local Government Division (LGD), Ministry of Agriculture (MoA), Ministry of Commerce (MoC), Ministry of Labour and Employment (MoLE), Ministry of Textiles and Jute (MoTJ), Post and Telecommunication Division (PTD) and Economic Relations Division (ERD)

Targets and Indicators	Lead and Co-Lead Ministry/Division	Associate Ministry/Division	Data Sources	Custodian and Partner Agency
9.1 Develop quality, reliable, sustainable and resilient infrastructure, including regional and trans-border infrastructure, to support economic development and human well-being, with a focus on affordable and equitable access for all Lead: RTHD				
9.1.1 Proportion of the rural population who live within 2 km of an all-season road	Lead: RTHD Co-lead: LGD	BD; MoHPW; MoR; MoS; SID; PID; MoInd; EMRD; MoDMR; MoL; MoFA; PMO	a) LGED, LGD b) BBS (APTRCS/PHC/CPHS), SID	CA: World Bank PA: UNEP, UNECE, ADB
9.1.2 Passenger and freight volumes, by mode of transport	Lead: RTHD Co-Lead: MoCAT, MoS, MoR		a) BRTA, RTHD b) BIWTC, MoS c) BIWTA, MoS d) BR, MoR e) CAAB, MoCAT	CA: ICAO, ITF-OECD PA: UPU, UNEP, UNECE
9.2 Promote inclusive and sustainable industrialization and, by 2030, significantly raise industry's share of employment and gross domestic product, in line with national circumstances, and double its share in least developed countries Lead: MoInd				
9.2.1 Manufacturing value added as a proportion of GDP and per capita	Lead: MoInd	FD; GED; MoC; BB; SID; ICTD; MoTJ	a) BBS (NAW), SID	CA: UNIDO PA: World Bank
9.2.2 Manufacturing employment as a proportion of total employment	Lead: MoInd	FD; GED; MoC; BB; SID; ICTD; MoTJ	a) BBS (QLFS), SID	CA: UNIDO PA: ILO
9.3 Increase the access of small-scale industrial and other enterprises, in particular in developing countries, to financial services, including affordable credit, and their integration into value chains and markets Lead: MoInd				
9.3.1 Proportion of small-scale industries in total industry value added	Lead: MoInd	FID (BB); LGD; MoInf; ICTD; SID	a) BBS (SMI/EC), SID	CA: UNIDO PA: UNCDF

Targets and Indicators	Lead and Co-Lead Ministry/ Division	Associate Ministry/ Division	Data Sources	Custodian and Partner Agency
9.3.2 Proportion of small-scale industries with a loan or line of credit	Lead: MoInd	FID (BB); SID	a) BBS (SMI/EC), SID	CA: UNIDO, World Bank PA: UNCDF
9.4 By 2030, upgrade infrastructure and retrofit industries to make them sustainable, with increased resource-use efficiency and greater adoption of clean and environmentally sound technologies and industrial processes, with all countries taking action in accordance with their respective capabilities Lead: MoInd Co-Lead: MoLE, MoC, MoTJ				
9.4.1 CO ₂ emission per unit of value added	Lead: MoInd Co-Lead: MoLE; MoC; MoTJ	BD; LGD; MoS; RTHD; MoR; MoA	a) DoE, MoEFCC	CA: UNIDO, IEA PA: UNEP
9.5 Enhance scientific research, upgrade the technological capabilities of industrial sectors in all countries, in particular developing countries, including, by 2030, encouraging innovation and substantially increasing the number of research and development workers per 1 million people and public and private research and development spending Lead: MoST Co-Lead: MoA				
9.5.1 Research and development expenditure as a proportion of GDP	Lead: MoST Co-Lead: MoA	SHED; TMED; MoInd; MoFL; SID; ICTD; PD	a) BBS (NAW/ SRD), SID	CA: UNESCO-UIS
9.5.2 Researchers (in full-time equivalent) per million inhabitants	Lead: MoST Co-Lead: MoA	SHED; TMED; MoInd; MoFL; SID; ICTD; PD	a) MoST b) MoA (NARS) c) UGC, MoE d) BIDS, MoP e) BBS (PHC/ QLFS/ SRD), SID	CA: UNESCO-UIS
9.a Facilitate sustainable and resilient infrastructure development in developing countries through enhanced financial, technological and technical support to African countries, least developed countries, landlocked developing countries and small island developing States Lead: ERD				
9.a.1 Total official international support (official development assistance plus other official flows) to infrastructure	Lead: ERD	BD; LGD; MoR; PID; RTHD; MoFA	a) ERD	CA: OECD PA: ADB, UNOPS
9.b Support domestic technology development, research and innovation in developing countries, including by ensuring a conducive policy environment for, inter alia, industrial diversification and value addition to commodities Lead: MoST Co-Lead: ICTD				

Targets and Indicators	Lead and Co-Lead Ministry/ Division	Associate Ministry/ Division	Data Sources	Custodian and Partner Agency
9.b.1 Proportion of medium and high-tech industry value added in total value added	Lead: ICTD Co-Lead: MoST	BD; ERD; LGD; MoA; MoHPW; MoInd; MoR; MoS; PID; RTHD; MoInd; MoTJ; SID	a) BBS (NAW), SID	CA: UNIDO PA: OECD
9.c Significantly increase access to information and communications technology and strive to provide universal and affordable access to the Internet in least developed countries by 2020 Lead: ICTD Co-Lead: PTD				
9.c.1 Proportion of population covered by a mobile network, by technology	Lead: PTD Co-Lead: ICTD	Inf. Com; MoR	a) BTRC, PTD	CA: ITU PA: UNDP



REDUCED
INEQUALITIES

10

SDG – 10: Reduce inequality within and among countries

Coordinating Ministry/Division	Lead and Co-Lead Ministry/Division
Cabinet Division (CD) and General Economics Division (GED)	Finance Division (FD), Financial Institutions Division (FID), Ministry of Commerce (MoC), Ministry of Expatriates' Welfare and Overseas Employment (MoEWOE), Ministry of Foreign Affairs (MoFA), Law and Justice Division (LJD) and Economic Relations Division (ERD)

Targets and Indicators	Lead and Co-Lead Ministry/Division	Associate Ministry/Division	Data Sources	Custodian and Partner Agency
10.1 By 2030, progressively achieve and sustain income growth of the bottom 40 per cent of the population at a rate higher than the national average Lead: GED				
10.1.1 Growth rates of household expenditure or income per capita among the bottom 40 per cent of the population and the total population	Lead: GED	FD; LGD; MoA; MoCHTA; MoCA; MoFL; HSD; MEFWD; MoLE; MoEWOE; MoLWA; MoSW; MoWCA; Prog. D; RDCD	a) BBS (HIES), SID	CA: World Bank
10.2 By 2030, empower and promote the social, economic and political inclusion of all, irrespective of age, sex, disability, race, ethnicity, origin, religion or economic or other status Lead: GED				
10.2.1 Proportion of people living below 50 per cent of median income, by sex, age and persons with disabilities	Lead: GED	FD; LGD; MoA; MoCHTA; MoCA; MoFL; HSD; MEFWD; MoLE; MoLWA; MoPA; MoRA; MoSW; MoWCA; Prog. D; SID; MoInd; MoFA	a) BBS (HIES), SID	CA: World Bank
10.3 Ensure equal opportunity and reduce inequalities of outcome, including by eliminating discriminatory laws, policies and practices and promoting appropriate legislation, policies and action in this regard Lead: LJD				
10.3.1 Proportion of population reporting having personally felt discriminated against or harassed in the previous 12 months on the basis of a ground of discrimination prohibited under international human rights law	Lead: LJD	CD; LPAD; MoPA; MoWCA; SID; MoFA	a) BBS (CPHS), SID	CA: OHCHR PA: UNDP, UNAIDS
10.4 Adopt policies, especially fiscal, wage and social protection policies, and progressively achieve greater equality Lead: GED				
10.4.1 Labour share of GDP	Lead: FD Co-lead: GED	CD; FD; MoLE; MoSW; Prog. D; IRD	a) BBS (NAW), SID	CA: ILO PA: IMF

Targets and Indicators	Lead and Co-Lead Ministry/ Division	Associate Ministry/ Division	Data Sources	Custodian and Partner Agency
10.4.2 Redistributive impact of fiscal policy	Lead: FD Co-Lead: SID (BBS)	MoFA; FID (BB)	a) BBS (HIES), SID b) FD	CA: World Bank
10.5 Improve the regulation and monitoring of global financial markets and institutions and strengthen the implementation of such regulations Lead: FD				
10.5.1 Financial Soundness Indicators	Lead: FID (BB) Co-Lead: FD	MoFA	a) BB, FID	CA: IMF
10.6 Ensure enhanced representation and voice for developing countries in decision-making in global international economic and financial institutions in order to deliver more effective, credible, accountable and legitimate institutions Lead: FD Co-Lead: ERD				
10.6.1 Proportion of members and voting rights of developing countries in international organizations	Lead: MoFA Co-Lead: ERD, FD	MoC	a) ERD b) MoFA	CA: DESA/FFDO
10.7 Facilitate orderly, safe, regular and responsible migration and mobility of people, including through the implementation of planned and well-managed migration policies Lead: MoEWOE Co-Lead: MoFA				
10.7.1 Recruitment cost borne by employee as a proportion of monthly income earned in country of destination	Lead: MoEWOE Co-Lead: MoFA	SHED; TMED; SSD; MoInf; MoPA; MoCAT	a) BBS (CMS/QLFS), SID	CA: ILO, World Bank
10.7.2 Number of countries with migration policies that facilitate orderly, safe, regular and responsible migration and mobility of people	Lead: MoEWOE Co-Lead: MoFA	SSD, MoInf	a) MoEWOE	CA: DESA Population Division, IOM PA: World Bank, Global Migration Group, UNHCR, UNODC, OECD, ILO
10.7.3 Number of people who died or disappeared in the process of migration towards an international destination	Lead: MoEWOE Co-Lead: MoFA	SSD, MoInf	a) IOM (MMP)	CA: IOM
10.7.4 Proportion of the population who are refugees, by country of origin	Lead: MoEWOE Co-Lead: MoFA	SSD, MoInf	a) RRRC, MoDMR b) UNHCR	CA: UNHCR PA: IOM, WFP
10.a Implement the principle of special and differential treatment for developing countries, in particular least developed countries, in accordance with World Trade Organization agreements Lead: MoC				
10.a.1 Proportion of tariff lines applied to imports from least developed countries and developing countries with zero-tariff	Lead: MoC	MoFA	a) WTO Cell, MoC b) UNSC	CA: ITC, UNCTAD, WTO

Targets and Indicators	Lead and Co-Lead Ministry/ Division	Associate Ministry/ Division	Data Sources	Custodian and Partner Agency
10.b Encourage official development assistance and financial flows, including foreign direct investment, to States where the need is greatest, in particular least developed countries, African countries, small island developing States and landlocked developing countries, in accordance with their national plans and programmes Lead: ERD				
10.b.1 Total resource flows for development, by recipient and donor countries and type of flow (e.g., official development assistance, foreign direct investment and other flows)	Lead: ERD Co-Lead: MoFA	GED; PMO	a) BB, FID b) ERD	CA: OECD
10.c By 2030, reduce to less than 3 per cent the transaction costs of migrant remittances and eliminate remittance corridors with costs higher than 5 per cent Lead: FID Co-Lead: MoFA				
10.c.1 Remittance costs as a proportion of the amount remitted	Lead: FID Co-Lead: MoFA	MoEWOE	a) BB, FID	CA: World Bank



SUSTAINABLE CITIES
AND COMMUNITIES

11

SDG – 11: Make cities and human settlements inclusive, safe, resilient and sustainable

Coordinating Ministry/Division	Lead and Co-Lead Ministry/Division
Ministry of Housing and Public Works (MoHPW)	Local Government Division (LGD), Ministry of Cultural Affairs (MoCA), Ministry of Disaster Management and Relief (MoDMR), Road Transport and Highways Division (RTHD), Ministry of Environment, Forest and Climate Change (MoEFCC), Ministry of Railways (MoR), Ministry of Science and Technology (MoST), Ministry of Women and Children Affairs (MoWCA) and Economic Relations Division (ERD)

Targets and Indicators	Lead and Co-Lead Ministry/Division	Associate Ministry/Division	Data Sources	Custodian and Partner Agency
11.1 By 2030, ensure access for all to adequate, safe and affordable housing and basic services and upgrade slums Lead: MoHPW				
11.1.1 Proportion of urban population living in slums, informal settlements or inadequate housing	Lead: MoHPW	LJD; LPAD; LGD; SID	a) BBS (PHC/ Census of Slum Areas and Floating Population), SID b) UN-Habitat	CA: UN-Habitat PA: UNEP (UNDP, UNFPA)
11.2 By 2030, provide access to safe, affordable, accessible and sustainable transport systems for all, improving road safety, notably by expanding public transport, with special attention to the needs of those in vulnerable situations, women, children, persons with disabilities and older persons Lead: RTHD Co- Lead: MoR				
11.2.1 Proportion of population that has convenient access to public transport, by sex, age and persons with disabilities	Lead: RTHD Co- Lead: MoR, MoS	LGD; PSD; BD; MoS; MoSW; MoWCA; MoInf	a) BBS (APTRCS/ PHC), SID	CA: UN-Habitat PA: UNEP, UNECE, (UNDP, UNFPA)
11.3 By 2030, enhance inclusive and sustainable urbanization and capacity for participatory, integrated and sustainable human settlement planning and management in all countries Lead: MoHPW				
11.3.1 Ratio of land consumption rate to population growth rate	Lead: MoHPW Co-Lead: MoL, LGD	SID (BBS)	a) BBS (SDG Cell), SID b) SPARRSO c) UN-Habitat	CA: UN-Habitat (UNFPA) PA: UNEP

Targets and Indicators	Lead and Co-Lead Ministry/ Division	Associate Ministry/ Division	Data Sources	Custodian and Partner Agency
11.3.2 Proportion of cities with a direct participation structure of civil society in urban planning and management that operate regularly and democratically	Lead: MoHPW	LGD; MoL	LGD	CA: UN-Habitat (UNDP)
11.4 Strengthen efforts to protect and safeguard the world's cultural and natural heritage Lead: MoCA				
11.4.1 Total per capita expenditure on the preservation, protection and conservation of all cultural and natural heritage, by source of funding (public, private), type of heritage (cultural, natural) and level of government (national, regional, and local/municipal)	Lead: MoCA Co-Lead: MoEFCC	SHED; TMED; MoPME; MoRA; MoYS; MoFA; MoCAT; FD	a) MoCA b) FD c) MoEFCC	CA: UNESCO-UIS PA: IUCN
11.5 By 2030, significantly reduce the number of deaths and the number of people affected and substantially decrease the direct economic losses relative to global gross domestic product caused by disasters, including water-related disasters, with a focus on protecting the poor and people in vulnerable situations Lead: MoDMR				
11.5.1 Number of deaths, missing persons and directly affected persons attributed to disasters per 100,000 population	Lead: MoDMR Co-Lead: MoEFCC	SSD; MoInf; PTD; SHED; TMED; MoEWOE; MoFood; HSD; MEFWD; MoSW; MoFL, MoWR; LGD; MoLWA; MoWCA; BB; SID; MoA	a) BBS (BDRHS), SID b) DDM, MoDMR	CA: UNDRR PA: WMO, UNFCCC, UNEP (UNDP, WFP, WHO)
11.5.2 Direct economic loss in relation to global GDP, damage to critical infrastructure and number of disruptions to basic services, attributed to disasters	Lead: MoDMR	SSD; MoS; MoWR, MoD; HSD; MEFWD; SID	a) BBS (BDRHS), SID b) DDM, MoDMR	CA: UNDRR PA: UNEP (UNDP)
11.6 By 2030, reduce the adverse per capita environmental impact of cities, including by paying special attention to air quality and municipal and other waste management Lead: LGD				
11.6.1 Proportion of municipal solid waste collected and managed in controlled facilities out of total municipal waste generated, by cities	Lead: LGD	MoEFCC; MoInd; PD	LGD (City Corporations, LGRD) BBS (EPRWMS), SID	CA: UN-Habitat, UNSD PA: UNEP, UNIDO

Targets and Indicators	Lead and Co-Lead Ministry/ Division	Associate Ministry/ Division	Data Sources	Custodian and Partner Agency
11.6.2 Annual mean levels of fine particulate matter (e.g. PM2.5 and PM10) in cities (population weighted)	Lead: LGD Co-lead: MoST	MoEFCC; MoInd; PD	a) DoE, MoEFCC b) WHO	CA: WHO PA: UN-Habitat, UNEP, OECD
11.7 By 2030, provide universal access to safe, inclusive and accessible, green and public spaces, in particular for women and children, older persons and persons with disabilities Lead: LGD				
11.7.1 Average share of the built-up area of cities that is open space for public use for all, by sex, age and persons with disabilities	Lead: LGD Co-Lead: MoHPW	MoEFCC; MoL; MoSW; MoWCA	a) MoHPW (Development Authorities, i.e. RAJUK, CDA, KDA, UDD etc.) b) BBS (ECDS Cell), SID	CA: UN-Habitat PA: UNDP
11.7.2 Proportion of persons victim of physical or sexual harassment, by sex, age, disability status and place of occurrence, in the previous 12 months	Lead: MoWCA	PSD; MoLE; SID; MoSW	BBS (VAW survey/ GBVS), SID	CA: UNODC, PA: UN Women, UN-Habitat
11.a Support positive economic, social and environmental links between urban, peri-urban and rural areas by strengthening national and regional development planning Lead: LGD Co-Lead: MoHPW				
11.a.1 Number of countries that have national urban policies or regional development plans that (a) respond to population dynamics; (b) ensure balanced territorial development; and (c) increase local fiscal space	Lead: MoHPW Co-Lead: LGD	MoDMR, MoEFCC	a) LGD (City Corporations, LGRD) b) Development Authorities (i.e. RAJUK, CDA, KDA, UDD etc.), MoHPW	CA: UN-Habitat PA: UNFPA
11.b By 2020, substantially increase the number of cities and human settlements adopting and implementing integrated policies and plans towards inclusion, resource efficiency, mitigation and adaptation to climate change, resilience to disasters, and develop and implement, in line with the Sendai Framework for Disaster Risk Reduction 2015-2030, holistic disaster risk management at all levels Lead: LGD Co-Lead: MoDMR				

Targets and Indicators	Lead and Co-Lead Ministry/ Division	Associate Ministry/ Division	Data Sources	Custodian and Partner Agency
11.b.1 Number of countries that adopt and implement national disaster risk reduction strategies in line with the Sendai Framework for Disaster Risk Reduction 2015–2030	Lead: MoDMR	SSD; MoInf; PTD; SHED; TMED; MoEWOE; MoFood; HSD; MEFWD; MoSW; MoFL, MoWR; LGD; MoLWA; MoWCA; BB; SID; MoA; MoFA	a) MoDMR	CA: UNDRR PA: UN-Habitat, UNEP
11.b.2 Proportion of local governments that adopt and implement local disaster risk reduction strategies in line with national disaster risk reduction strategies	Lead: LGD Co-Lead: MoDMR	SSD; MoInf; PTD; SHED; TMED; MoEWOE; MoFood; HSD; MEFWD; MoSW; MoWR; LGD; MoLWA; MoWCA; BB; SID; MoA	a) MoDMR	CA: UNDRR PA: UNEP, UN-Habitat, UNDP
11.c Support least developed countries, including through financial and technical assistance, in building sustainable and resilient buildings utilizing local materials				
Lead: ERD				
No suitable replacement indicator was proposed.				



RESPONSIBLE
CONSUMPTION
AND PRODUCTION

12

SDG – 12: Ensure sustainable consumption and production patterns

Coordinating Ministry/Division	Lead and Co-Lead Ministry/Division
Ministry of Food (MoFood)	Finance Division (FD), General Economics Division (GED), Implementation Monitoring and Evaluation Division (IMED), Local Government Division (LGD), Ministry of Civil Aviation and Tourism (MoCAT), Ministry of Environment, Forest and Climate Change (MoEFCC), Ministry of Agriculture (MoA), Secondary and Higher Education Division (SHED), Technical and Madrasah Education Division (TMED), Ministry of Primary and Mass Education (MoPME), Ministry of Foreign Affairs (MoFA) and Economic Relations Division (ERD)

Targets and Indicators	Lead and Co-Lead Ministry/Division	Associate Ministry/Division	Data Sources	Custodian and Partner Agency
12.1 Implement the 10-Year Framework of Programmes on Sustainable Consumption and Production Patterns, all countries taking action, with developed countries taking the lead, taking into account the development and capabilities of developing countries Lead: GED Co-Lead: MoFA				
12.1.1 Number of countries developing, adopting or implementing policy instruments aimed at supporting the shift to sustainable consumption and production	Lead: GED Co-Lead: MoFA	MoEFCC; MoInd; FD; MoA; MoFL; MoFood	a) MoEFCC	CA: UNEP PA: EU, UNIDO, UNDP
12.2 By 2030, achieve the sustainable management and efficient use of natural resources Lead: MoEFCC				
12.2.1 Material footprint, material footprint per capita, and material footprint per GDP	Lead: MoEFCC Co-Lead: ERD, GED	MoA; MoFL MoFood; BB; MoInd	a) BBS (ECDS Cell), SID	CA: UNEP (UNDP) PA: OECD
12.2.2 Domestic material consumption, domestic material consumption per capita, and domestic material consumption per GDP	Lead: MoEFCC Co-Lead: ERD, GED	MoA; MoFL MoFood; BB; MoInd	a) BBS (ECDS Cell), SID	CA: UNEP PA: OECD, World Bank, ADB, EU, UNDP
12.3 By 2030, halve per capita global food waste at the retail and consumer levels and reduce food losses along production and supply chains, including post-harvest losses Lead: MoFood Co-Lead: MoA				

Targets and Indicators	Lead and Co-Lead Ministry/ Division	Associate Ministry/ Division	Data Sources	Custodian and Partner Agency
12.3.1 (a) Food loss index and (b) food waste index	Lead: MoFood Co-Lead: MoA	MoInf; MoC; MoFL; SID; MoInd; RDCD	a) BBS (Agriculture Wing), SID b) FPMU, MoFood c) DGFood, MoFood	CA: FAO, UNEP PA: WFP
12.4 By 2020, achieve the environmentally sound management of chemicals and all wastes throughout their life cycle, in accordance with agreed international frameworks, and significantly reduce their release to air, water and soil in order to minimize their adverse impacts on human health and the environment Lead: MoEFCC				
12.4.1 Number of parties to international multilateral environmental agreements on hazardous waste, and other chemicals that meet their commitments and obligations in transmitting information as required by each relevant agreement	Lead: MoEFCC	LGD; MoA; MoInd; HSD; MEFWD; MoTJ; MoFA	a) DoE, MoEFCC	CA: UNEP (UNDP)
12.4.2 (a) Hazardous waste generated per capita; and (b) proportion of hazardous waste treated, by type of treatment	Lead: LGD Co-Lead: MoEFCC	MoInd; MoST; HSD; MEFWD	a) LGD b) DoE, MoEFCC c) MoST d) BBS (ECDS Cell), SID	CA: UNSD, UNEP PA: OECD, Eurostat, UNU, UNDP, WHO
12.5 By 2030, substantially reduce waste generation through prevention, reduction, recycling and reuse Lead: LGD				
12.5.1 National recycling rate, tons of material recycled	Lead: LGD	MoEFCC; MoInd; SID	DoE BBS (ECDS Cell), SID	CA: UNSD, UNEP PA: OECD, Eurostat, UNU, IFC
12.6 Encourage companies, especially large and transnational companies, to adopt sustainable practices and to integrate sustainability information into their reporting cycle Lead: MoInd				
12.6.1 Number of companies publishing sustainability reports	Lead: MoEFCC Co-Lead: MoC	MoLE; MoFA	a) DoE, MoEFCC	CA: UNEP, UNCTAD PA: ILO & UNDP
12.7 Promote public procurement practices that are sustainable, in accordance with national policies and priorities Lead: IMED (CPTU)				

Targets and Indicators	Lead and Co-Lead Ministry/ Division	Associate Ministry/ Division	Data Sources	Custodian and Partner Agency
12.7.1 Degree of sustainable public procurement policies and action plan implementation	Lead: IMED (CPTU)	BD; LGD; MoHPW; MoWR; PD; RTHD; MoInd; MoR; SHED; TMED	a) CPTU, IMED	CA: UNEP PA: ADB, UNDP
12.8 By 2030, ensure that people everywhere have the relevant information and awareness for sustainable development and lifestyles in harmony with nature Lead: SHED Co-Lead: MoPME				
12.8.1 Extent to which (i) global citizenship education and (ii) education for sustainable development are mainstreamed in (a) national education policies; (b) curricula; (c) teacher education; and (d) student assessment	Lead: SHED Co-Lead: TMED	FD, ICTD, LJD; MoCA; MoPME; MoRA; MoWCA; MoEFCC; MoInd; MoFA	a) SHED, MoE b) MoPME c) TMED d) NCTB	CA: UNESCO-UIS PA: UNEP
12.a Support developing countries to strengthen their scientific and technological capacity to move towards more sustainable patterns of consumption and production Lead: ERD Co-Lead: MoFA				
12.a.1 Installed renewable energy-generating capacity in developing countries (in watts per capita)	Lead: PD Co-Lead: EMRD	ERD; IED; MoFA; PID, MoInd; MoST	a) SREDA, PD	CA: IRENA PA: ADB, EU
12.b Develop and implement tools to monitor sustainable development impacts for sustainable tourism that creates jobs and promotes local culture and products Lead: MoCAT Co-Lead: SID (BBS)				
12.b.1 Implementation of standard accounting tools to monitor the economic and environmental aspects of tourism sustainability	Lead: MoCAT Co-Lead: MoEFCC, SID (BBS)	MoInd; MoC	a) NAW, BBS, SID	CA: UNWTO (UNDP, IMF, UNIDO)
12.c Rationalize inefficient fossil-fuel subsidies that encourage wasteful consumption by removing market distortions, in accordance with national circumstances, including by restructuring taxation and phasing out those harmful subsidies, where they exist, to reflect their environmental impacts, taking fully into account the specific needs and conditions of developing countries and minimizing the possible adverse impacts on their development in a manner that protects the poor and the affected communities Lead: FD				
12.c.1 Amount of fossil-fuel subsidies (production and consumption) per unit of GDP	Lead: FD Co-Lead: EMRD	IRD; PD	a) FD b) HCU, EMRD	CA: UNEP (ADB)



CLIMATE
ACTION 13

SDG – 13: Take urgent action to combat climate change and its impacts

Coordinating Ministry/Division	Lead and Co-Lead Ministry/Division
Ministry of Environment, Forest and Climate Change (MoEFCC) and Ministry of Disaster Management and Relief (MoDMR)	Local Government Division (LGD) and General Economics Division (GED)

Targets and Indicators	Lead and Co-Lead Ministry/Division	Associate Ministry/Division	Data Sources	Custodian and Partner Agency
13.1 Strengthen resilience and adaptive capacity to climate-related hazards and natural disasters in all countries Lead: MoDMR				
13.1.1 Number of deaths, missing persons and directly affected persons attributed to disasters per 100,000 population	Lead: MoDMR Co-Lead: MoEFCC	SSD; MoInf; PTD; SHED; TMED; MoEWOE; MoFood; HSD; MEFWD; MoSW; MoFL, MoWR; LGD; MoLWA; MoWCA; BB; SID; MoA	a) BBS (BDRHS), SID b) DDM, MoDMR	CA: UNDRR PA: WMO, UNFCCC, UNEP (UNDP, WFP, WHO)
13.1.2 Number of countries that adopt and implement national disaster risk reduction strategies in line with the Sendai Framework for Disaster Risk Reduction 2015–2030	Lead: MoDMR	SSD; MoInf; PTD; SHED; TMED; MoEWOE; MoFood; HSD; MEFWD; MoSW; MoFL, MoWR; LGD; MoLWA; MoWCA; BB; SID; MoA	a) MoDMR	CA: UNDRR PA: UN-Habitat, UNEP
13.1.3 Proportion of local governments that adopt and implement local disaster risk reduction strategies in line with national disaster risk reduction strategies	Lead: LGD Co-Lead: MoDMR	SSD; MoInf; PTD; SHED; TMED; MoEWOE; MoFood; HSD; MEFWD; MoSW; MoFL, MoWR; LGD; MoLWA; MoWCA; BB; SID; MoA	a) MoDMR	CA: UNDRR PA: UNEP, UN-Habitat, UNDP
13.2 Integrate climate change measures into national policies, strategies and planning Lead: GED				

Targets and Indicators	Lead and Co-Lead Ministry/ Division	Associate Ministry/ Division	Data Sources	Custodian and Partner Agency
13.2.1 Number of countries with nationally determined contributions, long-term strategies, national adaptation plans and adaptation communications, as reported to the secretariat of the United Nations Framework Convention on Climate Change 13.2.1 Number of countries with nationally determined contributions, long-term strategies, national adaptation plans, strategies as reported in adaptation communications and national communications	Lead: MoEFCC Co-Lead: MoFA	GED; AWRRID MoDMR; Prog. D, MoFL, MoA	a) MoEFCC b) MoDMR	CA: UNFCCC PA: UNDP & WHO
13.2.2 Total greenhouse gas emissions per year	Lead: MoEFCC	MoDMR; MoA; MoWR; SID	a) DoE b) UNFCCC c) World Bank	CA: UNFCCC PA: FAO, UNDP, EU
13.3 Improve education, awareness-raising and human and institutional capacity on climate change mitigation, adaptation, impact reduction and early warning Lead: MoEFCC Co-Lead: MoDMR				
13.3.1 Extent to which (i) global citizenship education and (ii) education for sustainable development are mainstreamed in (a) national education policies; (b) curricula; (c) teacher education; and (d) student assessment	Lead: SHED Co-Lead: TMED	FD, ICTD, LJD; MoCA; MoPME; MoRA; MoWCA; MoEFCC; MoInd; MoFA	a) SHED, MoE b) MoPME c) TMED d) NCTB	CA: UNESCO-UIS PA: UNEP
13.a Implement the commitment undertaken by developed-country parties to the United Nations Framework Convention on Climate Change to a goal of mobilizing jointly \$100 billion annually by 2020 from all sources to address the needs of developing countries in the context of meaningful mitigation actions and transparency on implementation and fully operationalize the Green Climate Fund through its capitalization as soon as possible Lead: MoEFCC				
13.a.1 Amounts provided and mobilized in United States dollars per year in relation to the continued existing collective mobilization goal of the \$100 billion commitment through to 2025	Lead: MoEFCC Co-Lead: MoFA	ERD; BB	a) ERD b) MoEFCC	CA: UNFCCC (UNDP)
13.b Promote mechanisms for raising capacity for effective climate change-related planning and management in least developed countries and small island developing States, including focusing on women, youth and local and marginalized communities Lead: MoEFCC				

Targets and Indicators	Lead and Co-Lead Ministry/ Division	Associate Ministry/ Division	Data Sources	Custodian and Partner Agency
13.b.1 Number of least developed countries and small island developing States with nationally determined contributions, long-term strategies, national adaptation plans and adaptation communications, as reported to the secretariat of the United Nations Framework Convention on Climate Change	Lead: MoEFCC	GED; AWRRID MoDMR; MoFA; Prog. D	a) MoEFCC b) MoDMR	CA: UNFCCC PA: UNDP & WHO



LIFE
BELOW WATER 14

SDG – 14: Conserve and sustainably use the oceans, seas and marine resources for sustainable development

Coordinating Ministry/Division	Lead and Co-Lead Ministry/Division
Ministry of Fisheries and Livestock (MoFL) and Ministry of Water Resources (MoWR)	Ministry of Environment, Forest and Climate Change (MoEFCC), Ministry of Science and Technology (MoST), Ministry of Shipping (MoS), Ministry of Defence (MoD) and Ministry of Foreign Affairs (MoFA)

Targets and Indicators	Lead and Co-Lead Ministry/Division	Associate Ministry/Division	Data Sources	Custodian and Partner Agency
14.1 By 2025, prevent and significantly reduce marine pollution of all kinds, in particular from land-based activities, including marine debris and nutrient pollution Lead: MoEFCC				
14.1.1 (a) Index of coastal eutrophication; and (b) plastic debris density	Lead: MoEFCC	MoD (BN); MoFA; MoST; MoS; MoD; PSD; MoFL	a) DoE, MoEFCC b) MoST c) BCG, SSD	CA: UNEP PA: IOC-UNESCO, IMO, FAO
14.2 By 2020, sustainably manage and protect marine and coastal ecosystems to avoid significant adverse impacts, including by strengthening their resilience, and take action for their restoration in order to achieve healthy and productive oceans Lead: MoEFCC Co-Lead: MoS				
14.2.1 Number of countries using ecosystem-based approaches to managing marine areas	Lead: MoFL Co-Lead: MoS; EMRD; MoEFCC	MoST; MoD; PSD (Coast Guard); MoFA	a) DoF, MoFL b) DoE, MoEFCC c) BFD, MoEFCC	CA: UNEP PA: IOC-UNESCO, FAO
14.3 Minimize and address the impacts of ocean acidification, including through enhanced scientific cooperation at all levels Lead: MoEFCC				
14.3.1 Average marine acidity (pH) measured at agreed suite of representative sampling stations	Lead: MoEFCC	MoST; MoFL; MoFA; EMRD; MoS; MoInd; MoD	a) DoE, MoEFCC	CA: IOC-UNESCO PA: UNEP
14.4 By 2020, effectively regulate harvesting and end overfishing, illegal, unreported and unregulated fishing and destructive fishing practices and implement science-based management plans, in order to restore fish stocks in the shortest time feasible, at least to levels that can produce maximum sustainable yield as determined by their biological characteristics Lead: MoFL				
14.4.1 Proportion of fish stocks within biologically sustainable levels	Lead: MoFL	MoD (BN); PSD; SID	a) DoF, MoFL b) FAO	CA: FAO

Targets and Indicators	Lead and Co-Lead Ministry/ Division	Associate Ministry/ Division	Data Sources	Custodian and Partner Agency
14.5 By 2020, conserve at least 10 per cent of coastal and marine areas, consistent with national and international law and based on the best available scientific information Lead: MoEFCC Co-Lead: MoFL				
14.5.1 Coverage of protected areas in relation to marine areas	Lead: MoFL Co-Lead: MoEFCC	MoD (BN); MoFA; PSD; MoS	a) DoE, MoEFCC b) BFD, MoEFCC c) DoF, MoFL	CA: UNEP-WCMC, UNEP, IUCN PA: Ramsar
14.6 By 2020, prohibit certain forms of fisheries subsidies which contribute to overcapacity and overfishing, eliminate subsidies that contribute to illegal, unreported and unregulated fishing and refrain from introducing new such subsidies, recognizing that appropriate and effective special and differential treatment for developing and least developed countries should be an integral part of the World Trade Organization fisheries subsidies negotiation^[b] Lead: MoFL Co-Lead: MoD (BN)				
14.6.1 Degree of implementation of international instruments aiming to combat illegal, unreported and unregulated fishing	Lead: MoFL Co-Lead: MoD (Bangladesh Navy)	FD; MoC; MoFA; PSD	a) DoF, MoFL b) BN, MoD c) FAO	CA: FAO
14.7 By 2030, increase the economic benefits to small island developing States and least developed countries from the sustainable use of marine resources, including through sustainable management of fisheries, aquaculture and tourism Lead: MoFL				
14.7.1 Sustainable fisheries as a proportion of GDP in small island developing States, least developed countries and all countries	Lead: MoFL	LGD; MoCAT; SID	a) BBS (NAW), SID b) DoF, MoFL	CA: FAO, UNEP-WCMC
14.a Increase scientific knowledge, develop research capacity and transfer marine technology, taking into account the Intergovernmental Oceanographic Commission Criteria and Guidelines on the Transfer of Marine Technology, in order to improve ocean health and to enhance the contribution of marine biodiversity to the development of developing countries, in particular small island developing States and least developed countries Lead: MoST Co-Lead: MoS				
14.a.1 Proportion of total research budget allocated to research in the field of marine technology	Lead: MoST Co-Lead: MoS	MoD; SHED; TMED; MoFL; MoFA; PSD; FD	a) MoS b) FD	CA: IOC-UNESCO PA: UNEP
14.b Provide access for small-scale artisanal fishers to marine resources and markets Lead: MoFL				

Targets and Indicators	Lead and Co-Lead Ministry/ Division	Associate Ministry/ Division	Data Sources	Custodian and Partner Agency
14.b.1 Degree of application of a legal/regulatory/ policy/institutional framework which recognizes and protects access rights for small-scale fisheries	Lead: MoFL	MoD; PSD (CG)	a) DoF, MoFL	CA: FAO
14.c Enhance the conservation and sustainable use of oceans and their resources by implementing international law as reflected in the United Nations Convention on the Law of the Sea, which provides the legal framework for the conservation and sustainable use of oceans and their resources, as recalled in paragraph 158 of “The future we want” Lead: MoFA				
14.c.1 Number of countries making progress in ratifying, accepting and implementing through legal, policy and institutional frameworks, ocean-related instruments that implement international law, as reflected in the United Nations Convention on the Law of the Sea, for the conservation and sustainable use of the oceans and their resources	Lead: MoFA	MoEFCC; PSD; MoS; MoFL	a) MoFA	CA: UN-DOALOS, FAO, UNEP, ILO, other UN-Oceans agencies



LIFE
ON LAND 15

SDG – 15: Protect, restore and promote sustainable use of terrestrial ecosystems, sustainably manage forests, combat desertification, and halt and reverse land degradation and halt biodiversity loss

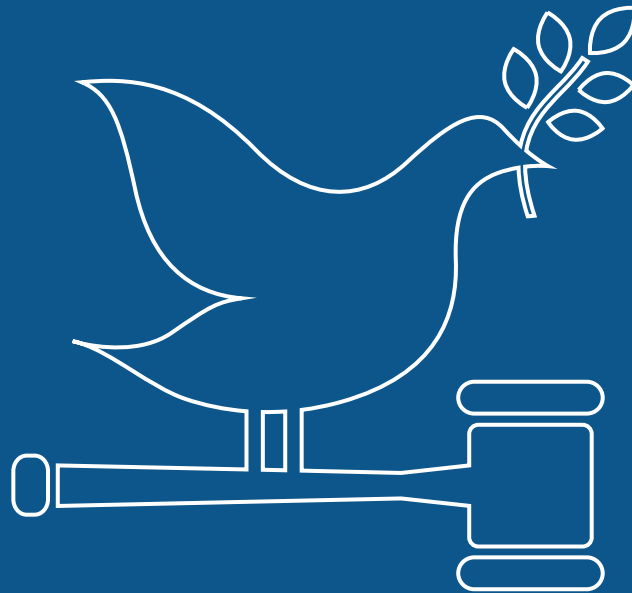
Coordinating Ministry/Division	Lead and Co-Lead Ministry/Division
Ministry of Environment, Forest and Climate Change (MoEFCC)	Finance Division (FD), Ministry of Foreign Affairs (MoFA), Ministry of Land (MoL) and Economic Relations Division (ERD)

Targets and Indicators	Lead and Co-Lead Ministry/Division	Associate Ministry/Division	Data Sources	Custodian and Partner Agency
15.1 By 2020, ensure the conservation, restoration and sustainable use of terrestrial and inland freshwater ecosystems and their services, in particular forests, wetlands, mountains and drylands, in line with obligations under international agreements Lead: MoEFCC				
15.1.1 Forest area as a proportion of total land area	Lead: MoEFCC	MoA; MoCHTA; MoL; MoWR; MoS	a) BFD, MoEFCC b) FAO	CA: FAO PA: UNEP
15.1.2 Proportion of important sites for terrestrial and freshwater biodiversity that are covered by protected areas, by ecosystem type	Lead: MoEFCC	MoA; MoCHTA; MoL; MoWR; MoS	a) DoE, MoEFCC b) DoF, MoFL c) BFD, MoEFCC	CA: UNEP-WCMC, UNEP, IUCN PA: Ramsar
15.2 By 2020, promote the implementation of sustainable management of all types of forests, halt deforestation, restore degraded forests and substantially increase afforestation and reforestation globally Lead: MoEFCC				
15.2.1 Progress towards sustainable forest management	Lead: MoEFCC	MoL; LGD; CD; MoInf	a) BFD, MoEFCC	CA: FAO PA: UNEP, UNFCCC
15.3 By 2030, combat desertification, restore degraded land and soil, including land affected by desertification, drought and floods, and strive to achieve a land degradation-neutral world Lead: MoEFCC Co-Lead: MoL				

Targets and Indicators	Lead and Co-Lead Ministry/ Division	Associate Ministry/ Division	Data Sources	Custodian and Partner Agency
15.3.1 Proportion of land that is degraded over total land area	Lead: MoEFCC Co-Lead: MoL	MoA; MoWR; LGD, MoDMR	a) DoE, MoEFCC b) MoL c) SRDI, MoA d) BBS (ECDS Cell), SID e) FAO	CA: UNCCD PA: FAO, UNEP
15.4 By 2030, ensure the conservation of mountain ecosystems, including their biodiversity, in order to enhance their capacity to provide benefits that are essential for sustainable development Lead: MoEFCC				
15.4.1 Coverage by protected areas of important sites for mountain biodiversity	Lead: MoEFCC	MoA; MoCHTA; MoCAT; MoL; LGD	a) BFD, MoEFCC	CA: UNEP-WCMC, UNEP, IUCN
15.4.2 Mountain Green Cover Index	Lead: MoEFCC	MoCHTA; MoA; MoL; MoInf; SID	a) BFD, MoEFCC	CA: FAO PA: UNEP
15.5 Take urgent and significant action to reduce the degradation of natural habitats, halt the loss of biodiversity and, by 2020, protect and prevent the extinction of threatened species Lead: MoEFCC				
15.5.1 Red List Index	Lead: MoEFCC	MoCHTA; MoA; MoL; MoInf; SID; MoFL	a) BFD, MoEFCC b) IUCN	CA: IUCN PA: UNEP, CITES
15.6 Promote fair and equitable sharing of the benefits arising from the utilization of genetic resources and promote appropriate access to such resources, as internationally agreed Lead: MoEFCC				
15.6.1 Number of countries that have adopted legislative, administrative and policy frameworks to ensure fair and equitable sharing of benefits	Lead: MoEFCC	MoA; MoFL; MoST	a) MoEFCC	CA: CBD-Secretariat PA: FAO, UNEP
15.7 Take urgent action to end poaching and trafficking of protected species of flora and fauna and address both demand and supply of illegal wildlife products Lead: MoEFCC				
15.7.1 Proportion of traded wildlife that was poached or illicitly trafficked	Lead: MoEFCC	LJD; SSD	a) BFD, MoEFCC	CA: UNODC, CITES PA: UNEP

Targets and Indicators	Lead and Co-Lead Ministry/ Division	Associate Ministry/ Division	Data Sources	Custodian and Partner Agency
15.8 By 2020, introduce measures to prevent the introduction and significantly reduce the impact of invasive alien species on land and water ecosystems and control or eradicate the priority species Lead: MoEFCC				
15.8.1 Proportion of countries adopting relevant national legislation and adequately resourcing the prevention or control of invasive alien species	Lead: MoEFCC	MoA; MoFL	a) MoEFCC	CA: IUCN PA: UNEP
15.9 By 2020, integrate ecosystem and biodiversity values into national and local planning, development processes, poverty reduction strategies and accounts Lead: MoEFCC				
15.9.1 (a) Number of countries that have established national targets in accordance with or similar to Aichi Biodiversity Target 2 of the Strategic Plan for Biodiversity 2011–2020 in their national biodiversity strategy and action plans and the progress reported towards these targets; and (b) integration of biodiversity into national accounting and reporting systems, defined as implementation of the System of Environmental-Economic Accounting	Lead: MoEFCC	GED; LGD; SID	a) MoEFCC b) BFD, MoEFCC	CA: CBD-Secretariat, UNEP (UNDP, IUCN, FAO)
15.a Mobilize and significantly increase financial resources from all sources to conserve and sustainably use biodiversity and ecosystems Lead: ERD Co-Lead: FD				
15.a.1 (a) Official development assistance on conservation and sustainable use of biodiversity; and (b) revenue generated and finance mobilized from biodiversity-relevant economic instruments	Lead: ERD Co-Lead: FD	MoFA; MoEFCC	a) ERD b) FD c) MoEFCC d) MoA e) UNSTATS	CA: OECD, UNEP, World Bank
15.b Mobilize significant resources from all sources and at all levels to finance sustainable forest management and provide adequate incentives to developing countries to advance such management, including for conservation and reforestation Lead: ERD				

Targets and Indicators	Lead and Co-Lead Ministry/ Division	Associate Ministry/ Division	Data Sources	Custodian and Partner Agency
15.b.1 (a) Official development assistance on conservation and sustainable use of biodiversity; and (b) revenue generated and finance mobilized from biodiversity-relevant economic instruments	(a) Lead: ERD Co-Lead: FD, (b) Lead: FD, Co-Lead: MoEFCC	MoFA; IRD (NBR)	a) ERD b) FD c) MoEFCC d) MoA e) UNSTATS	CA: OECD, UNEP, World Bank
15.c Enhance global support for efforts to combat poaching and trafficking of protected species, including by increasing the capacity of local communities to pursue sustainable livelihood opportunities Lead: MoEFCC Co-Lead: MoFA				
15.c.1 Proportion of traded wildlife that was poached or illicitly trafficked	Lead: MoEFCC	LJD; SSD	a) BFD, MoEFCC	CA: UNODC, CITES PA: UNEP



PEACE, JUSTICE
AND STRONG
INSTITUTIONS

16

SDG – 16: Promote peaceful and inclusive societies for sustainable development, provide access to justice for all and build effective, accountable and inclusive institutions at all levels

Coordinating Ministry/Division	Lead and Co-Lead Ministry/Division
Cabinet Division (CD)	Financial Institutions Division (FID), General Economics Division (GED), Local Government Division (LGD), Law and Justice Division (LJD), Legislative and Parliamentary Affairs Division (LPAD), Ministry of Foreign Affairs (MoFA), Ministry of Information (MoInf), Ministry of Public Administration (MoPA), Ministry of Women and Children Affairs (MoWCA), Security Service Division (SSD), Public Security Division (PSD), Election Commission Secretariat (ECS), Finance Division (FD) and Economic Relations Division (ERD)

Targets and Indicators	Lead and Co-Lead Ministry/Division	Associate Ministry/Division	Data Sources	Custodian and Partner Agency
16.1 Significantly reduce all forms of violence and related death rates everywhere Lead: PSD				
16.1.1 Number of victims of intentional homicide per 100,000 population, by sex and age	Lead: PSD	NHRC; LJD; LPAD; CD; MoWCA, MoSW	a) BP, PSD	CA: UNODC, WHO PA: DESA Population Division, UNICEF
16.1.2 Conflict-related deaths per 100,000 population, by sex, age and cause	Lead: PSD	NHRC	a) BP, PSD	CA: OHCHR (UNDP) PA: UNMAS, DESA Population Division
16.1.3 Proportion of population subjected to (a) physical violence, (b) psychological violence and (c) sexual violence in the previous 12 months	Lead: PSD	MoWCA; LJD; SID	a) BBS (VAW Survey/GBVS), SID	CA: UNODC PA: UN Women, UNFPA, WHO, UNICEF
16.1.4 Proportion of population that feel safe walking alone around the area they live	Lead: PSD	LGD; SID	a) BBS (CPHS/GBVS), SID	CA: UNODC
16.2 End abuse, exploitation, trafficking and all forms of violence against and torture of children Lead: PSD Co-Lead: MoWCA				

Targets and Indicators	Lead and Co-Lead Ministry/ Division	Associate Ministry/ Division	Data Sources	Custodian and Partner Agency
16.2.1 Proportion of children aged 1–17 years who experienced any physical punishment and/or psychological aggression by caregivers in the past month	Lead: PSD Co-Lead: MoWCA	NHRC; LJD; MoSW; MoWCA; MoFA; MoPME; SHED; TMED; MoInf; SID	a) BBS (MICS/ GBVS), SID	CA: UNICEF
16.2.2 Number of victims of human trafficking per 100,000 population, by sex, age and form of exploitation	Lead: PSD	MoFA; MoWCA, MoSW; MoDMR	a) BP, PSD, MoHA	CA: UNODC PA: UNICEF, IOM
16.2.3 Proportion of young women and men aged 18–29 years who experienced sexual violence by age 18	Lead: MoWCA Co-Lead: PSD	SHED; TMED; SID	a) BBS (VAW survey/ GBVS), SID	CA: UNICEF PA: UNSD, UNODC, UN Women
16.3 Promote the rule of law at the national and international levels and ensure equal access to justice for all Lead: LJD Co-Lead: LPAD				
16.3.1 Proportion of victims of violence in the previous 12 months who reported their victimization to competent authorities or other officially recognized conflict resolution mechanisms	Lead: LJD Co-Lead: LPAD	NHRC; LPAD; LGD; MoFA; SSD; MoPA; SID	a) BBS (VAW Survey/ GBVS/CPHS), SID	CA: UNODC
16.3.2 Unsented detainees as a proportion of overall prison population	Lead: PSD Co-Lead: LJD	LPAD; SSD	a) DoP, SSD	CA: UNODC
16.3.3 Proportion of the population who have experienced a dispute in the past two years and who accessed a formal or informal dispute resolution mechanism, by type of mechanism	Lead: PSD	LJD; LPAD	a) BBS (CPHS), SID	CA: UNDP, OECD, UNODC
16.4 By 2030, significantly reduce illicit financial and arms flows, strengthen the recovery and return of stolen assets and combat all forms of organized crime Lead: FID (BB) Co-Lead: PSD				
16.4.1 Total value of inward and outward illicit financial flows (in current United States dollars)	Lead: FID (BB) Co-Lead: IRD	PSD; MoFA; ACC	a) BB, FID	CA: UNODC, UNCTAD PA: IMF
16.4.2 Proportion of seized, found or surrendered arms whose illicit origin or context has been traced or established by a competent authority in line with international instruments	Lead: PSD		a) Bp, SSD b) MoD	CA: UNODC, UNODA

Targets and Indicators	Lead and Co-Lead Ministry/ Division	Associate Ministry/ Division	Data Sources	Custodian and Partner Agency
16.5 Substantially reduce corruption and bribery in all their forms				
Lead: CD				
16.5.1 Proportion of persons who had at least one contact with a public official and who paid a bribe to a public official, or were asked for a bribe by those public officials, during the previous 12 months	Lead: CD	ACC; MoInf; MoRA; MoPA; MoFA; SID; Inf. Com	a) BBS (CPHS), SID	CA: UNODC
16.5.2 Proportion of businesses that had at least one contact with a public official and that paid a bribe to a public official, or were asked for a bribe by those public officials during the previous 12 months	Lead: CD	ACC; MoInf; MoRA; MoPA; MoFA; SID; Inf. Com; ERD	a) WB (Establishment Survey)	CA: World Bank, UNODC
16.6 Develop effective, accountable and transparent institutions at all levels				
Lead: CD				
16.6.1 Primary government expenditures as a proportion of original approved budget, by sector (or by budget codes or similar)	Lead: FD	EC; LPAD; PMO; Inf. Com; MoFA; MoPA	a) FD	CA: World Bank
16.6.2 Proportion of population satisfied with their last experience of public services	Lead: CD	EC; LPAD; PMO; Inf. Com; MoFA; MoPA; FD	a) BBS (CPHS), SID	CA: UNDP
16.7 Ensure responsive, inclusive, participatory and representative decision-making at all levels				
Lead: MoPA				
16.7.1 Proportions of positions in national and local institutions, including (a) the legislatures; (b) the public service; and (c) the judiciary, compared to national distributions, by sex, age, persons with disabilities and population groups	Lead: MoPA	CD; EC; Inf. Com; LPAD; LGD; MoFA; MoSW	a) BPS b) MoPA c) LJD	CA: IPU, UNDP PA: UN Women, OECD
16.7.2 Proportion of population who believe decision-making is inclusive and responsive, by sex, age, disability and population group	Lead: GED	CD; EC; Inf. Com; LPAD; LGD; MoFA; MoSW; SID	a) BBS (CPHS), SID	CA: UNDP PA: UN Women
16.8 Broaden and strengthen the participation of developing countries in the institutions of global governance				
Lead: MoFA				
16.8.1 Proportion of members and voting rights of developing countries in international organizations	Lead: MoFA Co-Lead: ERD, FD	MoC	a) ERD b) MoFA	CA: DESA/FFDO

Targets and Indicators	Lead and Co-Lead Ministry/ Division	Associate Ministry/ Division	Data Sources	Custodian and Partner Agency
16.9 By 2030, provide legal identity for all, including birth registration				
Lead: LGD Co- Lead: EC				
16.9.1 Proportion of children under 5 years of age whose births have been registered with a civil authority, by age	Lead: LGD Co- Lead: EC	CD; SID	a) BBS (MICS/ SVRS), SID b) ORG, LGD	CA: UNSD, UNICEF PA: UNFPA, DESA Population Division
16.10 Ensure public access to information and protect fundamental freedoms, in accordance with national legislation and international agreements				
Lead: MoInf				
16.10.1 Number of verified cases of killing, kidnapping, enforced disappearance, arbitrary detention and torture of journalists, associated media personnel, trade unionists and human rights advocates in the previous 12 months	Lead: MoInf	NHRC; MoFA; Inf. Com; PSD; MoEWOE	a) NHRC, LPAD	CA: OHCHR PA: ILO, UNESCO-UIS, UNDP
16.10.2 Number of countries that adopt and implement constitutional, statutory and/or policy guarantees for public access to information	Lead: MoInf	LPAD	a) IC, MoInf	CA: UNESCO-UIS PA: World Bank, UNEP
16.a Strengthen relevant national institutions, including through international cooperation, for building capacity at all levels, in particular in developing countries, to prevent violence and combat terrorism and crime				
Lead: PSD Co-Lead: MoPA				
16.a.1 Existence of independent national human rights institutions in compliance with the Paris Principles	Lead: PSD Co-Lead: MoPA	ERD; MoFA; MoInd; NHRC	a) NHRC, LPAD	CA: OHCHR PA: (UNDP)
16.b Promote and enforce non-discriminatory laws and policies for sustainable development				
Lead: LPAD				
16.b.1 Proportion of population reporting having personally felt discriminated against or harassed in the previous 12 months on the basis of a ground of discrimination prohibited under international human rights law	Lead: LJD	CD; LPAD; MoPA; MoWCA; SID; MoFA	a) BBS (CPHS), SID	CA: OHCHR PA: UNDP, UNAIDS



PARTNERSHIPS
FOR THE GOALS 17

SDG – 17: Strengthen the means of implementation and revitalize the Global Partnership for Sustainable Development

Coordinating Ministry/Division	Lead and Co-Lead Ministry/Division			
Economic Relations Division (ERD) and Ministry of Foreign Affairs (MoFA)	Finance Division (FD), Internal Resources Division (IRD), Financial Institutions Division (FID), General Economics Division (GED), Ministry of Commerce (MoC), Ministry of Environment, Forest and Climate Change (MoEFCC), Ministry of Science and Technology (MoST), Bangladesh Investment Development Authority (BIDA), Post and Telecommunication Division (PTD), Statistics and Informatics Division (SID), Information and Communication Technology Division (ICTD) and Local Government Division (LGD)			
Targets and Indicators	Lead and Co-Lead Ministry/Division	Associate Ministry/Division	Data Sources	Custodian and Partner Agency
Finance				
17.1 Strengthen domestic resource mobilization, including through international support to developing countries, to improve domestic capacity for tax and other revenue collection				
Lead: IRD				
17.1.1 Total government revenue as a proportion of GDP, by source	Lead: IRD	ERD; FD; GED; SID; MoFA	a) NBR, IRD b) FD	CA: IMF PA: OECD, World Bank
17.1.2 Proportion of domestic budget funded by domestic taxes	Lead: FD	IRD	a) FD	CA: IMF
17.2 Developed countries to implement fully their official development assistance commitments, including the commitment by many developed countries to achieve the target of 0.7 per cent of gross national income for official development assistance (ODA/GNI) to developing countries and 0.15 to 0.20 per cent of ODA/GNI to least developed countries; ODA providers are encouraged to consider setting a target to provide at least 0.20 per cent of ODA/GNI to least developed countries				
Lead: ERD				
17.2.1 Net official development assistance, total and to least developed countries, as a proportion of the Organization for Economic Cooperation and Development (OECD) Development Assistance Committee donors' gross national income (GNI)	Lead: ERD	FD; MoFA	a) ERD b) OECD	CA: OECD, UNCTAD
17.3 Mobilize additional financial resources for developing countries from multiple sources				
Lead: ERD				
17.3.1 Foreign direct investment, official development assistance and South-South cooperation as a proportion of gross national income	Lead: ERD Co-Lead: PMO (BIDA)	FD; BB; PMO (BEPZA, BEZA); MoFA	a) BB, FID b) ERD	CA: OECD, UNCTAD
17.3.2 Volume of remittances (in United States dollars) as a proportion of total GDP	Lead: FID (BB)	MoEWOE; MoFA	a) BB, FID	CA: World Bank

Targets and Indicators	Lead and Co-Lead Ministry/ Division	Associate Ministry/ Division	Data Sources	Custodian and Partner Agency
17.4 Assist developing countries in attaining long-term debt sustainability through coordinated policies aimed at fostering debt financing, debt relief and debt restructuring, as appropriate, and address the external debt of highly indebted poor countries to reduce debt distress Lead: FD				
17.4.1 Debt service as a proportion of exports of goods and services	Lead: FD	BB; ERD; MoFA	a) ERD b) BB, FID	CA: World Bank PA: UNCTAD
17.5 Adopt and implement investment promotion regimes for least developed countries Lead: PMO (BIDA)				
17.5.1 Number of countries that adopt and implement investment promotion regimes for developing countries, including the least developed countries	Lead: PMO (BIDA)	FD; MoC; IRD; PMO (BEPZA, BEZA, PPPA); GED; MoFA	a) BIDA, PMO b) NBR, IRD	CA: UNCTAD PA: IFC
Technology				
17.6 Enhance North-South, South-South and triangular regional and international cooperation on and access to science, technology and innovation and enhance knowledge-sharing on mutually agreed terms, including through improved coordination among existing mechanisms, in particular at the United Nations level, and through a global technology facilitation mechanism Lead: MoST				
17.6.1 Fixed Internet broadband subscriptions per 100 inhabitants, by speed	Lead: PTD	ICTD	a) BTRC, PTD	CA: ITU
17.7 Promote the development, transfer, dissemination and diffusion of environmentally sound technologies to developing countries on favourable terms, including on concessional and preferential terms, as mutually agreed Lead: MoEFCC				
17.7.1 Total amount of funding for developing countries to promote the development, transfer, dissemination and diffusion of environmentally sound technologies	Lead: MoEFCC	ERD; MoFA; MoST; MoInd; PMO (BIDA); MoDMR; IRD	a) ERD	CA: UNEP-CTCN PA: OECD
17.8 Fully operationalize the technology bank and science, technology and innovation capacity-building mechanism for least developed countries by 2017 and enhance the use of enabling technology, in particular information and communications technology Lead: PTD Co- Lead: ICTD				
17.8.1 Proportion of individuals using the Internet	Lead: PTD Co- Lead: ICTD	MoST; MoFL; ERD; MoFA; MoPA; IRD (NBR)	a) BBS (SVRS/ PHC /ICT Use and Access Survey/ HIES/MICS / CPHS), SID	CA: ITU
Capacity-building				

Targets and Indicators	Lead and Co-Lead Ministry/ Division	Associate Ministry/ Division	Data Sources	Custodian and Partner Agency
17.9 Enhance international support for implementing effective and targeted capacity-building in developing countries to support national plans to implement all the Sustainable Development Goals, including through North-South, South-South and triangular cooperation Lead: ERD Co-Lead: MoFA				
17.9.1 Dollar value of financial and technical assistance (including through North-South, South-South and triangular cooperation) committed to developing countries	Lead: ERD Co-Lead: MoFA	GED; PMO; FD; MoPA	a) ERD	CA: OECD
Trade				
17.10 Promote a universal, rules-based, open, non-discriminatory and equitable multilateral trading system under the World Trade Organization, including through the conclusion of negotiations under its Doha Development Agenda Lead: MoC Co-Lead: MoFA				
17.10.1 Worldwide weighted tariff-average	Lead: MoC Co-Lead: MoFA	ERD; GED; IRD (NBR)	a) BTTC, MoC b) WTO Cell, MoC	CA: WTO, ITC, UNCTAD
17.11 Significantly increase the exports of developing countries, in particular with a view to doubling the least developed countries' share of global exports by 2020 Lead: MoC Co-Lead: MoFA				
17.11.1 Developing countries' and least developed countries' share of global exports	Lead: MoC Co-Lead: MoFA	BB; IRD; MoTJ	a) BTTC, MoC	CA: WTO, ITC, UNCTAD
17.12 Realize timely implementation of duty-free and quota-free market access on a lasting basis for all least developed countries, consistent with World Trade Organization decisions, including by ensuring that preferential rules of origin applicable to imports from least developed countries are transparent and simple, and contribute to facilitating market access Lead: MoC Co-Lead: MoFA				
17.12.1 Weighted average tariffs faced by developing countries, least developed countries and small island developing States	Lead: MoC Co-Lead: MoFA	IRD	a) BTTC, MoC	CA: WTO, ITC, UNCTAD
Systemic issues				
Policy and institutional coherence				
17.13 Enhance global macroeconomic stability, including through policy coordination and policy coherence Lead: FD Co-Lead: GED				
17.13.1 Macroeconomic Dashboard	Lead: FD Co-Lead: GED	SID; IRD	a) WB	CA: World Bank

Targets and Indicators	Lead and Co-Lead Ministry/ Division	Associate Ministry/ Division	Data Sources	Custodian and Partner Agency
17.14 Enhance policy coherence for sustainable development Lead: GED Co-Lead: PMO				
17.14.1 Number of countries with mechanisms in place to enhance policy coherence of sustainable development	Lead: GED Co-Lead: PMO	BB; FD; MoFA; CD; IRD	a) GED	CA: UNEP (UNDP)
17.15 Respect each country's policy space and leadership to establish and implement policies for poverty eradication and sustainable development Lead: GED				
17.15.1 Extent of use of country-owned results frameworks and planning tools by providers of development cooperation	Lead: ERD Co-Lead: GED	ERD; FD; MoC, IRD	a) ERD	CA: OECD, UNDP
Multi-stakeholder partnerships				
17.16 Enhance the Global Partnership for Sustainable Development, complemented by multi-stakeholder partnerships that mobilize and share knowledge, expertise, technology and financial resources, to support the achievement of the Sustainable Development Goals in all countries, in particular developing countries Lead: MoFA Co-Lead: ERD				
17.16.1 Number of countries reporting progress in multi-stakeholder development effectiveness monitoring frameworks that support the achievement of the sustainable development goals	Lead: MoFA Co-Lead: ERD	GED; ICTD; SHED; TMED; MoST; MoC; IRD	a) ERD	CA: OECD, UNDP PA: UNEP
17.17 Encourage and promote effective public, public-private and civil society partnerships, building on the experience and resourcing strategies of partnerships Lead: PMO (PPPA)				
17.17.1 Amount in United States dollars committed to public-private partnerships for infrastructure	Lead: PMO (PPPA)	FD; GED; PID; MoFA; BB; IRD	a) NGOAB, PMO b) PPPA, PMO c) ERD	CA: World Bank
Data, monitoring and accountability				
17.18 By 2020, enhance capacity-building support to developing countries, including for least developed countries and small island developing States, to increase significantly the availability of high-quality, timely and reliable data disaggregated by income, gender, age, race, ethnicity, migratory status, disability, geographic location and other characteristics relevant in national contexts Lead: SID (BBS)				

Targets and Indicators	Lead and Co-Lead Ministry/ Division	Associate Ministry/ Division	Data Sources	Custodian and Partner Agency
17.18.1 Statistical capacity indicator for Sustainable Development Goal monitoring	Lead: SID (BBS)	BB; ERD; FD; IRD; SHED; TMED; MoPME; MoEFCC; HSD; MEFWD; EMRD; ICTD; PTD; LGD; MoA; MoFood; MoCHTA; SSD; MoPA; MoWCA; MoEWOE; MoHPW; MoFA; MoFL; GED	a) SID (SDG Cell)	World Bank, All UN Custodian Agencies
17.18.2 Number of countries that have national statistical legislation that complies with the Fundamental Principles of Official Statistics	Lead: SID (BBS)	BB; ERD; FD; IRD; SHED; TMED; MoPME; MoEFCC; HSD; MEFWD; EMRD; ICTD; PTD; LGD; MoA; MoFood; MoCHTA; SSD; MoPA; MoWCA; MoEWOE; MoHPW; MoFA; MoFL; GED	a) SID (SDG Cell)	CA: PARIS21 (All UN Custodian Agencies)
17.18.3 Number of countries with a national statistical plan that is fully funded and under implementation, by source of funding	Lead: SID (BBS)	BB; ERD; FD; IRD; SHED; TMED; MoPME; MoEFCC; HSD; MEFWD; EMRD; ICTD; PTD; LGD; MoA; MoFood; MoCHTA; SSD; MoPA; MoWCA; MoEWOE; MoHPW; MoFA; GED	a) SID (SDG Cell)	CA: PARIS21 PA: UNSD, Regional Commissions, World Bank
17.19 By 2030, build on existing initiatives to develop measurements of progress on sustainable development that complement gross domestic product, and support statistical capacity-building in developing countries Lead: SID				
17.19.1 Dollar value of all resources made available to strengthen statistical capacity in developing countries	Lead: SID	GED; FD; ERD; BB	a) ERD b) SID (SDG Cell)	CA: PARIS21 PA: UNSD, Regional Commissions, World Bank
17.19.2 Proportion of countries that (a) have conducted at least one population and housing census in the last 10 years; and (b) have achieved 100 per cent birth registration and 80 per cent death registration	Lead: SID Co-lead: LGD		a) BBS (Census Wing), SID b) ORG, LGD	CA: UNSD PA: UNFPA, DESA Population Division, other involved agencies in the inter-agency group on CRVS, UNDP

Glossary

Coordinating Ministry/Division:

With the aim to implement the Sustainable Development Goals (SDGs) in synergized and coordinated way, the Prime Minister's Office (PMO) assigned Goal-wise Coordinating Ministry/Division on 30 September 2019. The roles of the Coordinating Ministry/Division are: (a) to coordinate the goal-wise implementation as directed by the SDGs Implementation and Review Committee, (b) To organize bi-annual workshops by involving other (Lead, Co-Lead, Associate) Ministry/Division, development partners, NGOs, CSOs and relevant stakeholders for reviewing goal-wise progress and attainment, and (c) To identify goal-wise implementation challenges, figure out possible way outs for overcoming the challenges, promote innovation, and adopt and replicate best practices

Lead Ministry/Division:

The Lead Ministry/Division is supposed to translate the respective targets/indicators into actionable programmes/projects/activities. Lead Ministry/Division needs to include Co-lead and Associate Ministry/Division in policy formulation and implementation to achieve their respective targets/indicators. The Lead Ministry/Division must communicate with the Co-lead and Associate Ministry/Division to determine the responsibilities of ministries/divisions according to their respective SDG targets and indicators.

Co-lead Ministry/Division:

Co-lead Ministry/Division will assess the alignment of the undertaken projects/activities with ministries' structures and examine how well the programmes can be implemented to achieve their respective targets/indicators. Co-lead Ministry/Division can also help ensure agenda-setting that may lead to an agreed and realistic approach towards achieving their respective targets/indicators. Co-lead Ministry/Division will support the Lead Ministry/Division to ensure robust mechanisms to successfully implement SDGs in Bangladesh.

Associate Ministry/Division:

Associate Ministry/Division with the relevant expertise can also share their experiences and essential information to identify appropriate programmes/projects/activities in order to achieve SDG targets/indicators.

Data Sources:

The primary responsibility of the Data Source is to provide timely and credible data to the Bangladesh Bureau of Statistics (BBS). The Data Source is also required to provide data to the SDG Tracker. In addition, the Data Sources need to ensure the availability of quality data and coordinate among Lead, Co-lead, and Associate Ministries/Divisions and Custodian Agencies to fast-track data generation for SDGs.

Custodian Agency and Partner Agency:

Custodian/Partner agencies are United Nations bodies (and in some cases, other international organizations) responsible for debunking metadata for national governments, compiling, verifying and reporting data for global indicators (by regional and global aggregates). Custodian/Partner agencies are also responsible for strengthening national statistical capacity (data generation, monitoring and reporting capacity). All the assigned Data Sources must coordinate with the designated Custodian/Partner agencies to have clear understanding on metadata under existing mandates.

N.B. The responsibilities of custodianship of the non-resident Custodian/Partner agencies have been assigned among the resident Custodian/Partner agencies (within the parenthesis in the Revised Mapping Document under Custodian and Partner Agency column). These locally assigned Custodian/Partner agencies are mainly responsible for providing expertise and technical support to the ministries/divisions/agencies.

List of SDG Publications by GED since 2016

1	Integration of Sustainable Development Goals into the 7 th Five Year Plan (February 2016)
2	Policy Coherence: Mainstreaming SDGs into National Plan and Implementation [Prepared for Bangladesh Delegation to 71 st UNGA session 2016] (September 2016)
3	A Handbook on Mapping of Ministries by Targets in the Implementation of SDGs aligning with 7 th Five Year Plan (2016-20) (September 2016)
4	Data Gap Analysis for Sustainable Development Goals (SDGs): Bangladesh Perspective (January 2017)
5	টেকসই উন্নয়ন অভীষ্ট, লক্ষ্যমাত্রা ও সূচকসমূহ (মূল ইংরেজী থেকে বাংলায় অনূদিত) (এপ্রিল ২০১৭)
6	Bangladesh Voluntary National Reviews (VNR) 2017: Eradicating poverty and promoting prosperity in a changing world (June 2017)
7	SDGs Financing Strategy: Bangladesh Perspective (June 2017)
8	A Training Handbook on Implementation of the 7 th Five Year Plan (June 2017)
9	Bangladesh Development Journey with SDGs [Prepared for Bangladesh Delegation to 72 nd UNGA Session 2017] (September 2017)
10	Monitoring and Evaluation Framework of Sustainable Development Goals (SDGs): Bangladesh Perspective (March 2018)
11	National Action Plan of Ministries/Divisions by Targets for the Implementation of SDGs (June 2018)
12	Journey with SDGs: Bangladesh is Marching Forward [Prepared for Bangladesh Delegation to 73 rd UNGA Session 2018] (September 2018)
13	এসডিজি অভিযাত্রা : এগিয়ে যাচ্ছে বাংলাদেশ (জাতিসংঘ সাধারণ পরিষদের ৭৩তম অধিবেশনের জন্য প্রণীত) (সেপ্টেম্বর ২০১৮)
14	Synthesis Report on First National Conference on SDGs Implementation (November 2018)
15	Sustainable Development Goals: Bangladesh First Progress Report 2018 (December 2018)
16	টেকসই উন্নয়ন অভীষ্টঃ বাংলাদেশ অগ্রগতি প্রতিবেদন ২০১৮ (ইংরেজী থেকে বাংলায় অনূদিত) (এপ্রিল ২০১৯)
17	Empowering People: Ensuring Inclusiveness and Equality [For Bangladesh Delegation to High-Level Political Forum 2019] (July 2019)
18	Prospects and Opportunities of International Cooperation in Attaining SDG targets in Bangladesh (September 2019)
19	Bangladesh Moving Ahead with SDGs [Prepared for Bangladesh Delegation to 74 th UNGA Session 2019] (September 2018)
20	টেকসই উন্নয়ন অভীষ্ট অর্জনে এগিয়ে যাচ্ছে বাংলাদেশ (জাতিসংঘ সাধারণ পরিষদের ৭৪তম অধিবেশনের জন্য প্রণীত) (সেপ্টেম্বর ২০১৯)
21	Consultation on Private Sector Engagement (PSE) in attaining Sustainable Development Goals (SDGs) in Bangladesh: Bonding & Beyond. Proceedings (January 2020)
22	Revised Monitoring and Evaluation Framework of the Sustainable Development Goals (SDGs): Bangladesh Perspective (April 2020)
23	Sustainable Development Goals: Bangladesh Progress Report 2020 (June 2020)
24	টেকসই উন্নয়ন অভীষ্ট : বাংলাদেশ অগ্রগতি প্রতিবেদন ২০২০ (মূল ইংরেজি থেকে বাংলায় ভাষান্তরিত) (জুন ২০২০)
25	Bangladesh Voluntary National Reviews 2020 (June 2020)
26	Leaving No One Behind (LNOB) in Bangladesh; Recommendations for the 8 th Five Year Plan for implementing Sustainable Development Goals (SDGs) (September 2020)
27	Promoting Sustainable Blue Economy in Bangladesh Through Sustainable Blue Bond: Assessing the Feasibility of Instituting Blue Bond in Bangladesh (June 2021)
28	Bangladesh Moving Ahead with SDGs (Prepared for Bangladesh Delegation to 76 th UNGA session 2021) (September 2021)
29	Revised Mapping of Ministries/Divisions and Custodian/Partner Agencies for SDG Implementation in Bangladesh (January 2022)

List of Notable Publications by General Economics Division (GED) Bangladesh Planning Commission since 2009

1	Policy Study on Financing Growth and Poverty Reduction: Policy Challenges and Options in Bangladesh (May 2009)
2	Policy Study on Responding to the Millennium Development Challenge Through Private Sectors Involvement in Bangladesh (May 2009)
3	Policy Study on The Probable Impacts of Climate Change on Poverty and Economic Growth and the Options of Coping with Adverse Effect of Climate Change in Bangladesh (May 2009)
4	Steps Towards Change: National Strategy for Accelerated Poverty Reduction II (Revised) FY 2009 -11 (December 2009)
5	Millennium Development Goals: Bangladesh Progress Report-2009 (2009)
6	Millennium Development Goals: Needs Assessment and Costing 2009-2015 Bangladesh (July 2009)
7	এমডিজি কর্ম-পরিকল্পনা (৫১টি উপজেলা) (জানুয়ারি-জুন ২০১০)
8	MDG Action Plan (51 Upazillas) (January 2011)
9	MDG Financing Strategy for Bangladesh (April 2011)
10	SAARC Development Goals: Bangladesh Progress Report-2011 (August 2011)
11	Background Papers of the Sixth Five Year Plan (Volume 1-4) (September 2011)
12	6 th Five Year Plan (FY 2011-FY 2015) (December 2011)
13	Millennium Development Goals: Bangladesh Progress Report-2011 (February 2012)
14	Perspective Plan of Bangladesh 2010-2021: Making Vision 2021 a Reality (April 2012)
15	Public Expenditure for Climate Change: Bangladesh Climate Public Expenditure and Institutional Review (October 2012)
16	Development of Results Framework for Private Sectors Development in Bangladesh (2012)
17	ষষ্ঠ পঞ্চবার্ষিক পরিকল্পনা (২০১১-১৫) বাংলা অনুবাদ (অক্টোবর ২০১২)
18	Climate Fiscal Framework (October 2012)
19	Public Expenditure for Climate Change: Bangladesh CPEIR 2012
20	First Implementation Review of the Sixth Five Year Plan -2012 (January 2013)
21	বাংলাদেশের প্রথম প্রেক্ষিত পরিকল্পনা ২০১০-২০২১ রূপকল্প ২০২১ বাস্তবে রূপায়ণ (ফেব্রুয়ারি ২০১৩)
22	National Sustainable Development Strategy (2010-2021) (May 2013)

23	জাতীয় টেকসই উন্নয়ন কৌশলপত্র (২০১০-২০২১) [মূল ইংরেজি থেকে বাংলায় অনূদিত] (মে ২০১৩)
24	Millennium Development Goals: Bangladesh Progress Report-2012 (June 2013)
25	Post 2015 Development Agenda: Bangladesh Proposal to UN (June 2013)
26	National Policy Dialogue on Population Dynamics, Demographic Dividend, Ageing Population & Capacity Building of GED [UNFPA Supported GED Project Output1] (December 2013)
27	Capacity Building Strategy for Climate Mainstreaming: A Strategy for Public Sector Planning Professionals (2013)
28	Revealing Changes: An Impact Assessment of Training on Poverty-Environment Climate-Disaster Nexus (January 2014)
29	Towards Resilient Development: Scope for Mainstreaming Poverty, Environment, Climate Change and Disaster in Development Projects (January 2014)
30	An Indicator Framework for Inclusive and Resilient Development (January 2014)
31	Capacity Building Strategy for Climate Mainstreaming: A Strategy for Public Sector Planning Professionals (2013)
32	Revealing Changes: An Impact Assessment of Training on Poverty-Environment Climate-Disaster Nexus (January 2014)
33	Towards Resilient Development: Scope for Mainstreaming Poverty, Environment, Climate Change and Disaster in Development Projects (January 2014)
34	An Indicator Framework for Inclusive and Resilient Development (January 2014)
35	Manual of Instructions for Preparation of Development Project Proposal/Proforma Part-1 & Part 2 (March 2014)
36	SAARC Development Goals: Bangladesh Progress Report-2013 (June 2014)
37	The Mid Term-Implementation Review of the Sixth Five Year Plan 2014 (July 2014)
38	Millennium Development Goals: Bangladesh Progress Report 2013 (August 2014).
39	Population Management Issues: Monograph-2 (March 2015)
40	GED Policy Papers and Manuals (Volume 1-4) (June 2015)
41	National Social Security Strategy (NSSS) of Bangladesh (July 2015)
42	MDGs to Sustainable Development Transforming our World: SDG Agenda for Global Action (2015-2030)- A Brief for Bangladesh Delegation UNGA 70 th Session, 2015 (September 2015)
43	7 th Five Year Plan (2015/16-2019/20) (December 2015)
44	সপ্তম পঞ্চবার্ষিক পরিকল্পনা ২০১৫/১৬-২০১৯/২০ (ইংরেজি থেকে বাংলা অনূদিত) (অক্টোবর ২০১৬)
45	জাতীয় সামাজিক নিরাপত্তা কৌশলপত্র (অক্টোবর ২০১৬)
46	Population Management Issues: Monograph-3 (March 2016)

47	Bangladesh ICPD 1994-2014 Country Report (March 2016)
48	Policy Coherence: Mainstreaming SDGs into National Plan and Implementation (Prepared for Bangladesh Delegation to 71 st UNGA session, 2016) (September 2016)
49	Millennium Development Goals: End- period Stocktaking and Final Evaluation Report (2000-2015) (September 2016)
50	A Handbook on Mapping of Ministries by Targets in the implementation of SDGs aligning with 7 th Five Year Plan (2016-20) (September 2016)
51	Data Gap Analysis for Sustainable Development Goals (SDGs): Bangladesh Perspective (January 2017)
52	Environment and Climate Change Policy Gap Analysis in Haor Areas (February 2017)
53	Integration of Sustainable Development Goals into the 7 th Five Year Plan (February 2017)
54	Banking ATLAS (February 2017)
55	টেকসই উন্নয়ন অভীষ্ট, লক্ষ্যমাত্রা ও সূচকসমূহ (মূল ইংরেজি থেকে বাংলায় অনূদিত) (এপ্রিল ২০১৭)
56	EXPLORING THE EVIDENCE : Background Research Papers for Preparing the National Social Security Strategy of Bangladesh (June 2017)
57	Bangladesh Voluntary National Review (VNR) 2017 : Eradicating poverty and promoting prosperity in a changing world, (June 2017)
58	SDGs Financing Strategy: Bangladesh Perspective (June 2017)
59	A Training Handbook on Implementation of the 7 th Five Year Plan (June 2017)
60	7 th Five Year Plan (FY 2015/16-FY 2019/20): Background Papers Volume 01: Macro Economic Management & Poverty Issues (June 2017)
61	7 th Five Year Plan (FY 2015/16-FY 2019/20): Background Papers Volume 02: Socio-Economic Issues (June 2017)
62	7 th Five Year Plan (FY 2015/16-FY 2019/20): Background Papers Volume 03: Infrastructure, Manufacturing & Service Sector (June 2017)
63	7 th Five Year Plan (FY 2015/16-FY 2019/20): Background Papers Volume 04: Agriculture, Water & Climate Change (June 2017)
64	7 th Five Year Plan (FY 2015/16-FY 2019/20): Background Papers Volume 05: Governance, Gender & Urban Development (June 2017)
65	Education Sector Strategy and Actions for Implementation of the 7 th Five Year Plan (FY2016-20)
66	GED Policy Study: Effective Use of Human Resources for Inclusive Economic Growth and Income Distribution-An Application of National Transfer Accounts (February 2018)
67	Monitoring and Evaluation Framework of Sustainable Development Goals (SDGs): Bangladesh Perspective (March 2018)
68	National Action Plan of Ministries/Divisions by Targets for the implementation of Sustainable Development Goals (June 2018)
69	Bangladesh Delta Plan 2100: Baseline Studies: Volume 1: Water Resources Management (June 2018)
70	Bangladesh Delta Plan 2100: Baseline Studies: Volume 2: Disaster and Environmental Management (June 2018)
71	Bangladesh Delta Plan 2100: Baseline Studies: Volume 3: Land Use and Infrastructure Development (June 2018)

72	Bangladesh Delta Plan 2100: Baseline Studies: Volume 4: Agriculture, Food Security and Nutrition (June 2018)
73	Bangladesh Delta Plan 2100: Baseline Studies: Volume 5: Socio-economic Aspects of The Bangladesh (June 2018)
74	Bangladesh Delta Plan 2100: Baseline Studies: Volume 6: Governance and Institutional Development(June 2018)
75	Journey with SDGs, Bangladesh is Marching Forward (Prepared for 73 rd UNGA Session 2018) (September 2018)
76	এসডিজি অভিযাত্রা: এগিয়ে যাচ্ছে বাংলাদেশ (জাতিসংঘ সাধারণ পরিষদের ৭৩তম অধিবেশনের জন্য প্রণীত) (সেপ্টেম্বর ২০১৮)
77	Bangladesh Delta Plan 2100 (Bangladesh in the 21 st Century) Volume 1: Strategy (October 2018)
78	Bangladesh Delta Plan 2100 (Bangladesh in the 21 st Century) Volume 2: Investment Plan (October 2018)
79	বাংলাদেশ ব-দ্বীপ পরিকল্পনা ২১০০: একুশ শতকের বাংলাদেশ (সংক্ষিপ্ত বাংলা সংস্করণ) (অক্টোবর ২০১৮)
80	Bangladesh Delta Plan 2100: Bangladesh in the 21 st Century (Abridged Version) (October 2018)
81	Synthesis Report on First National Conference on SDGs Implementation (November 2018)
82	Sustainable Development Goals: Bangladesh First Progress Report 2018 (December 2018)
83	টেকসই উন্নয়ন অভিষ্টঃ বাংলাদেশ অগ্রগতি প্রতিবেদন ২০১৮ (ইংরেজি থেকে অনূদিত) (এপ্রিল ২০১৯)
84	Study on Employment, Productivity and Sectoral Investment in Bangladesh (May 2019)
85	Implementation Review of the Sixth Five Year Plan (FY 2011-FY 2015) and its Attainments (May 2019)
86	Mid-term Implementation Review of the Seventh Five Year Plan (FY 2016-FY 2020) (May 2019)
87	Background Studies for the Second Perspective Plan of Bangladesh (2021-2041) Volume-1 (June 2019)
88	Background Studies for the Second Perspective Plan of Bangladesh (2021-2041) Volume-2 (June 2019)
89	Empowering people: ensuring inclusiveness and equality For Bangladesh Delegation to HIGH-LEVEL POLITICAL FORUM 2019 (July 2019)
90	Implementation Review of the perspective plan 2010-2021 (September 2019)
91	Bangladesh Moving Ahead with SDGs (Prepared for Bangladesh Delegation to 74 th UNGA session 2019) (September 2019)
92	টেকসই উন্নয়ন অভিষ্ট অর্জনে এগিয়ে যাচ্ছে বাংলাদেশ (জাতিসংঘ সাধারণ পরিষদের ৭৪তম অধিবেশনে বাংলাদেশ প্রতিনিধিগণের জন্য প্রণীত) (সেপ্টেম্বর ২০১৯)
93	Prospects and Opportunities of International Cooperation in Attaining SDG Targets in Bangladesh (Global Partnership in Attainment of the SDGs) (September 2019)
94	Background Studies for the Second Perspective Plan of Bangladesh (2021-2041) Volume-3 (October 2019)
95	Background Studies for the Second Perspective Plan of Bangladesh (2021-2041) Volume-4 (October 2019)
96	Background Studies for the Second Perspective Plan of Bangladesh (2021-2041) Volume-5 (October 2019)

97	Background Studies for the Second Perspective Plan of Bangladesh (2021-2041) Volume-6 (October 2019)
98	Monograph 4: Population Management Issues (December 2019)
99	Monograph 5: Population Management Issues (December 2019)
100	Consultation on Private Sector Engagement (PSE) in attaining Sustainable Development Goals (SDGs) in Bangladesh: Bonding & Beyond. Proceedings (January 2020)
101	Impact Assessment and Coping up Strategies of Graduation from LDC Status for Bangladesh (March 2020)
102	Perspective Plan of Bangladesh 2021-2041 (March 2020)
103	বাংলাদেশের প্রেক্ষিত পরিকল্পনা ২০২১-২০৪১ (মার্চ ২০২০)
104	Revised Monitoring and Evaluation Framework of the Sustainable Development Goals (SDGs): Bangladesh Perspective (April 2020)
105	Sustainable Development Goals: Bangladesh Progress Report 2020 (April 2020)
106	টেকসই উন্নয়ন অভীষ্ট : বাংলাদেশ অগ্রগতি প্রতিবেদন ২০২০ (ইংরেজি থেকে বাংলায় অনূদিত) (এপ্রিল ২০২০)
107	Bangladesh Voluntary National Review 2020 (June 2020)
108	বাংলাদেশ ব-দ্বীপ পরিকল্পনা ২১০০: একুশ শতকের বাংলাদেশ (সংক্ষিপ্ত বাংলা ২য় সংস্করণ) (আগস্ট ২০২০)
109	Leaving No One Behind (LNOB) in Bangladesh; Recommendations for the 8 th Five Year Plan for implementing Sustainable Development Goals (SDGs) (September 2020)
110	A Compendium of Social Protection Researches (July 2020)
111	Midterm Implementation Review of the National Social Security Strategy (July 2020)
112	Scope of Gender-responsive Adaptive Social Protection in Bangladesh (July 2020)
113	Sector Strategy on Economic Governance in the Financial Sector in Bangladesh (December 2020)
114	8 th Five Year Plan (July 2020-June 2025) (December 2020)
115	অষ্টম পঞ্চবার্ষিক পরিকল্পনা (জুলাই ২০২০-জুন ২০২৫) বাংলা সংস্করণ (জুন-২০২১)
116	রূপকল্প ২০৪১ বাস্তবে রূপায়ণ: বাংলাদেশের প্রেক্ষিত পরিকল্পনা ২০২১-২০৪১ (সংক্ষিপ্ত সংস্করণ)
117	Promoting Sustainable Blue Economy in Bangladesh Through Sustainable Blue Bond: Assessing the Feasibility of Instituting Blue Bond in Bangladesh (June 2021)
118	Bangladesh Moving Ahead with SDGs (Prepared for Bangladesh Delegation to 76 th UNGA session 2021) (September 2021)
119	Integrating Climate Change Adaptation into Development Planning of Bangladesh, Training Manual (December 2021)
120	Revised Mapping of Ministries/Divisions and Custodian/Partner Agencies for SDG Implementation in Bangladesh (January 2022)



General Economics Division (GED)
Bangladesh Planning Commission
Government of the People's Republic of Bangladesh

