

CE 1102

Computer Aided Engineering Drawing

Contact Hours : 3

Credit: 1.5

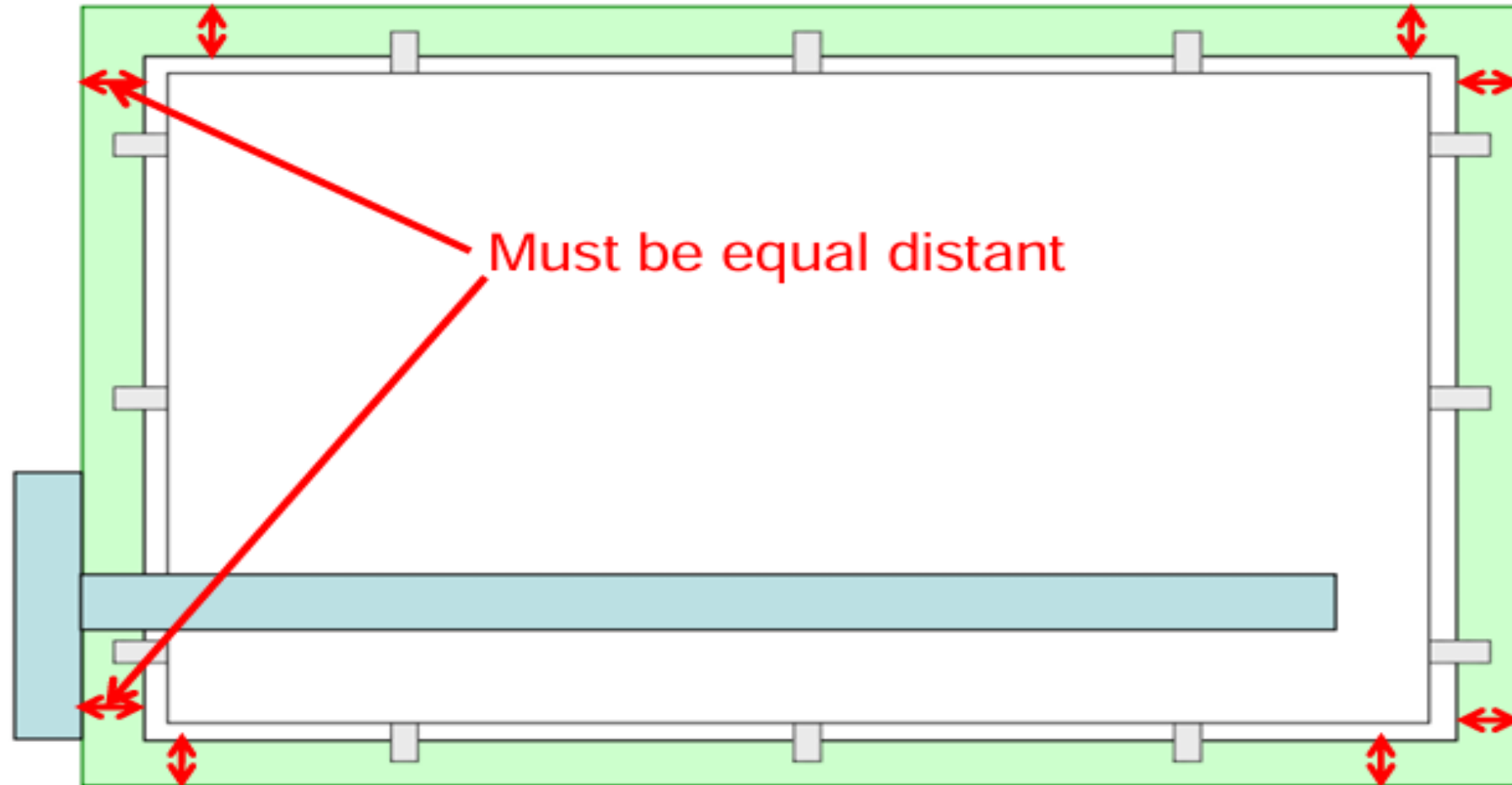
Presented by-

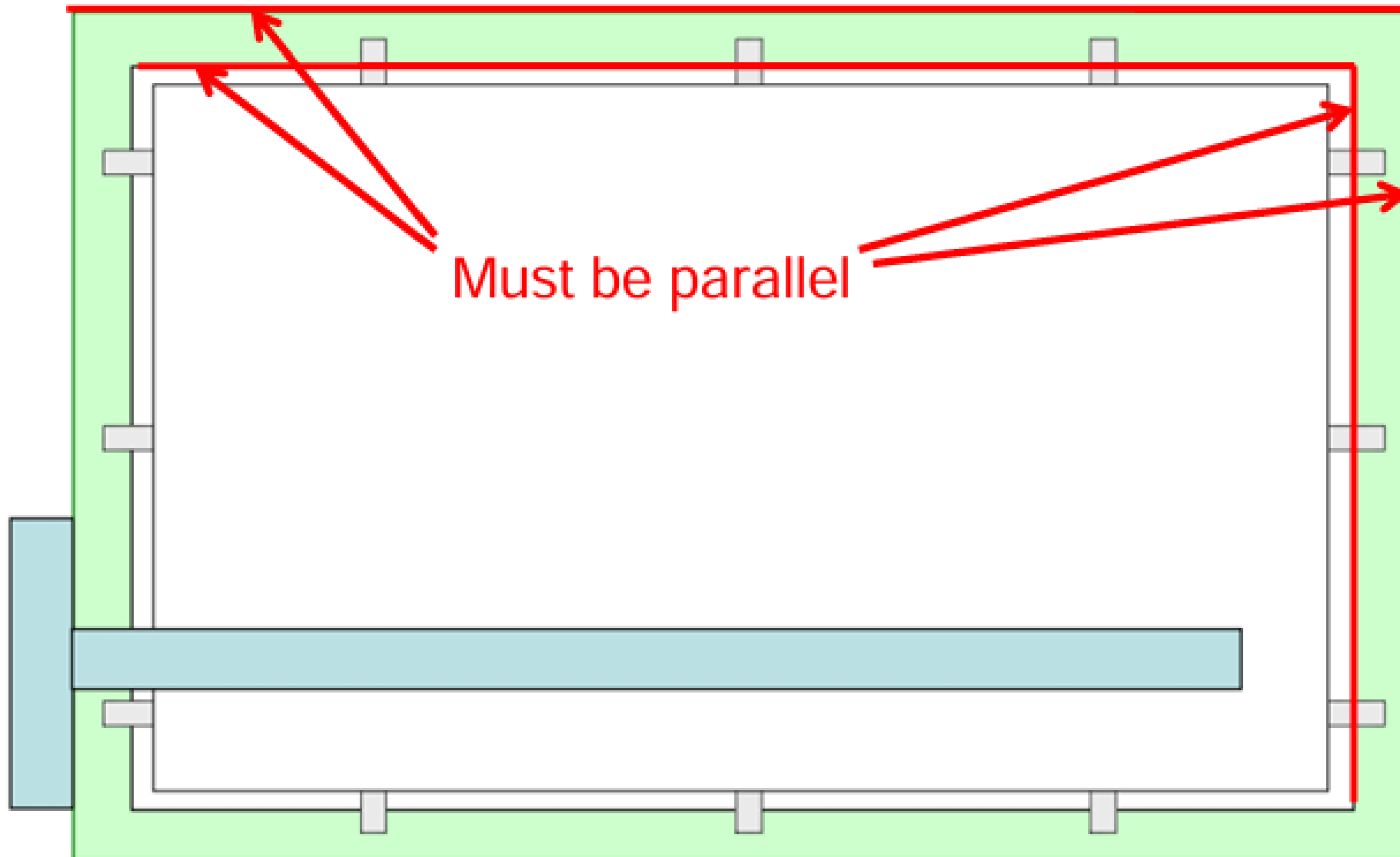
Muaz Bin Ali

Lecturer

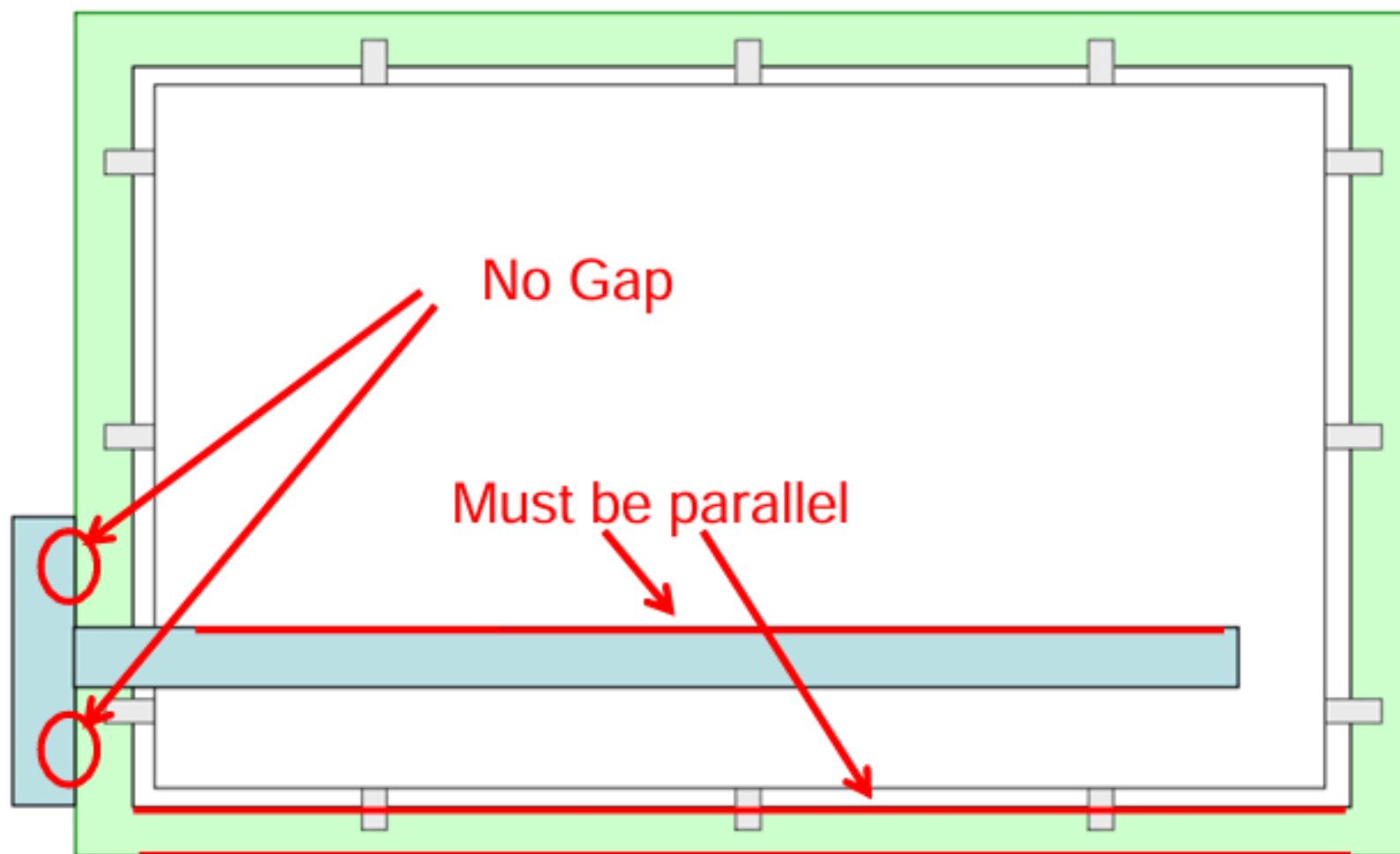
Department of CE, MEC

Orientation of Drawing Paper

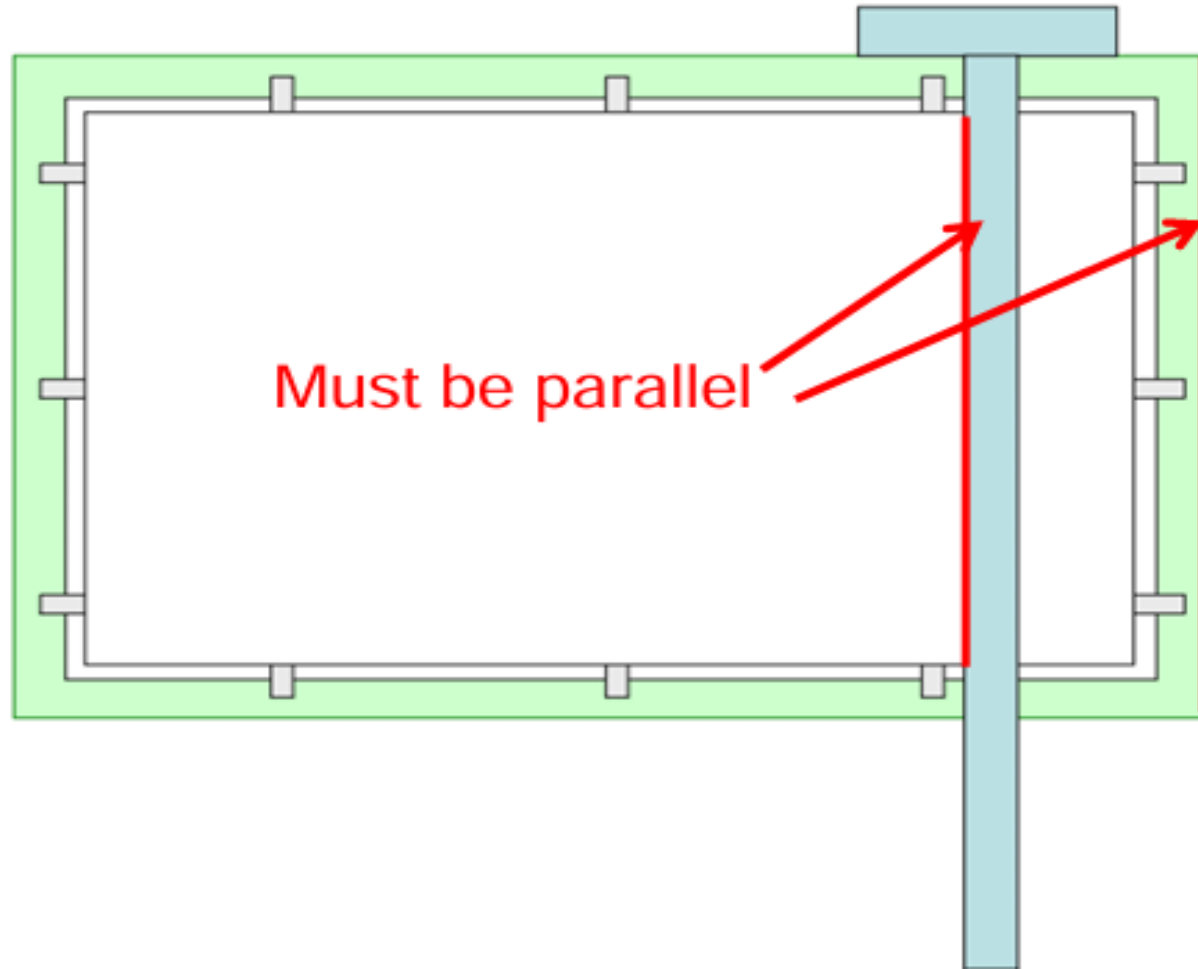




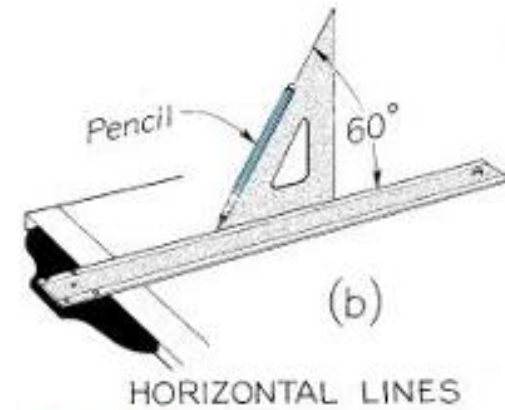
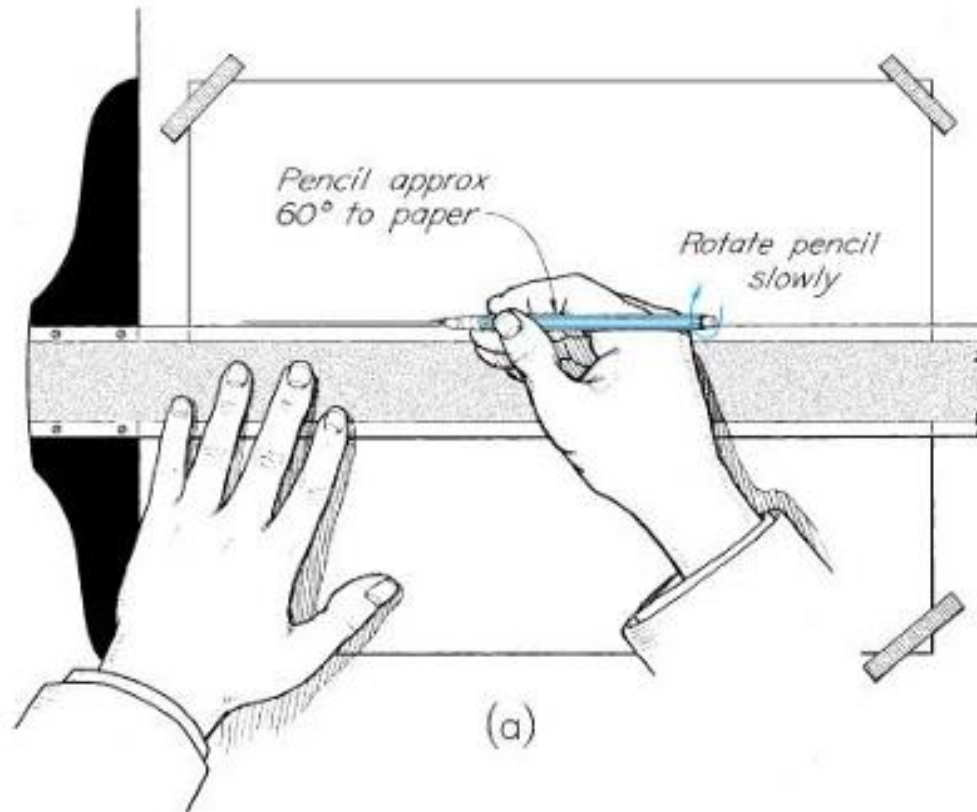
Uses of T-Scale



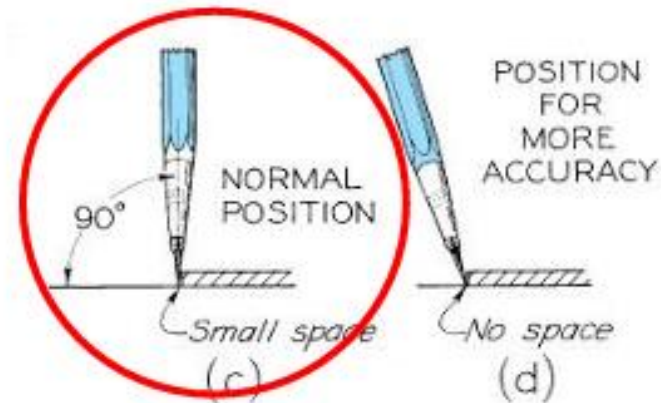
Uses of T-Scale



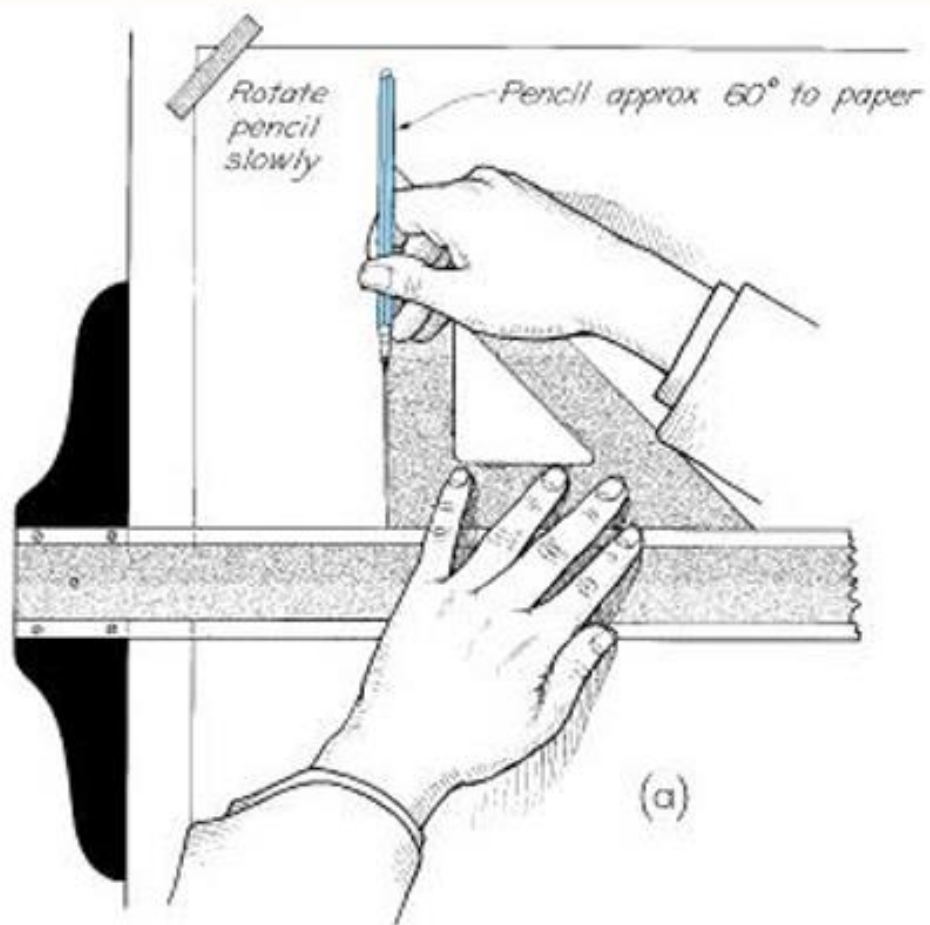
Drawing Horizontal Lines



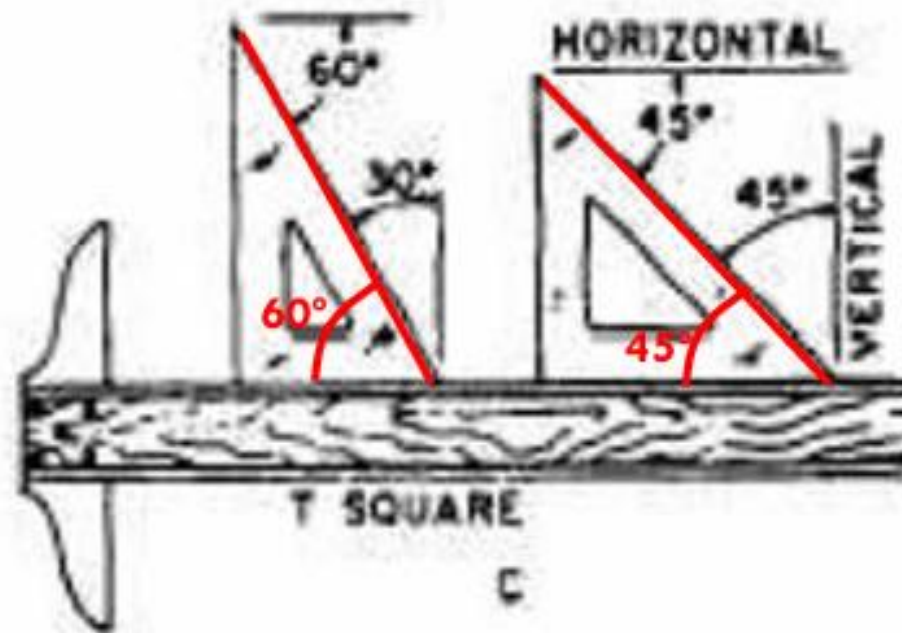
HORIZONTAL LINES



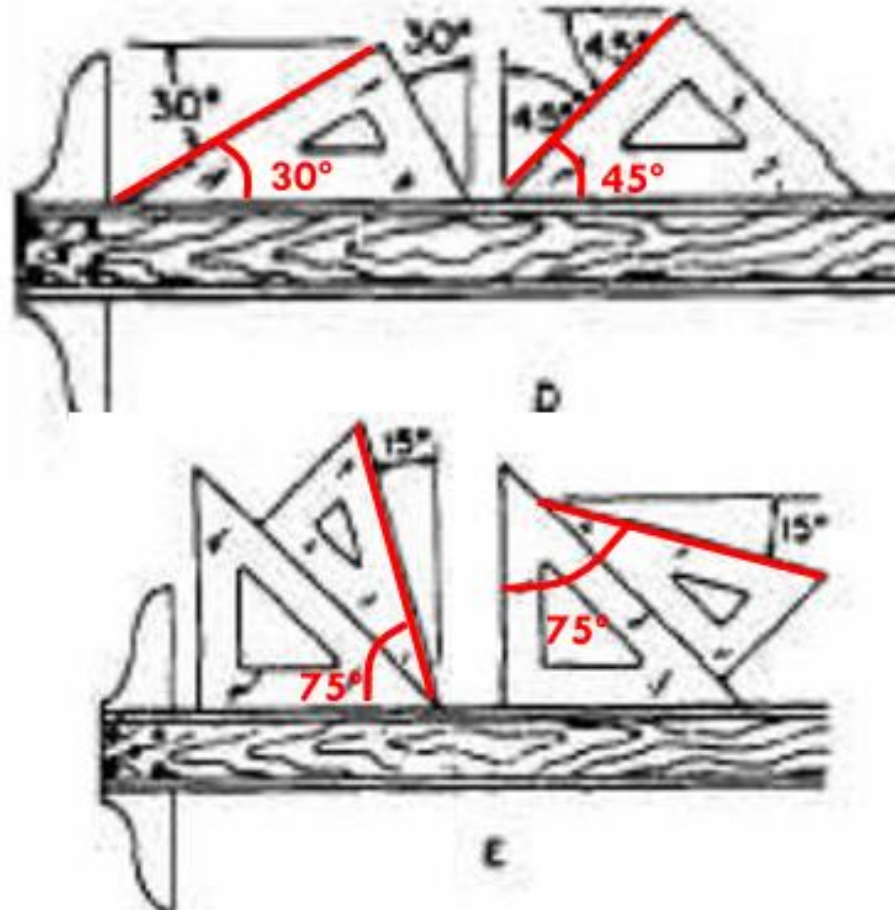
Drawing Vertical Lines



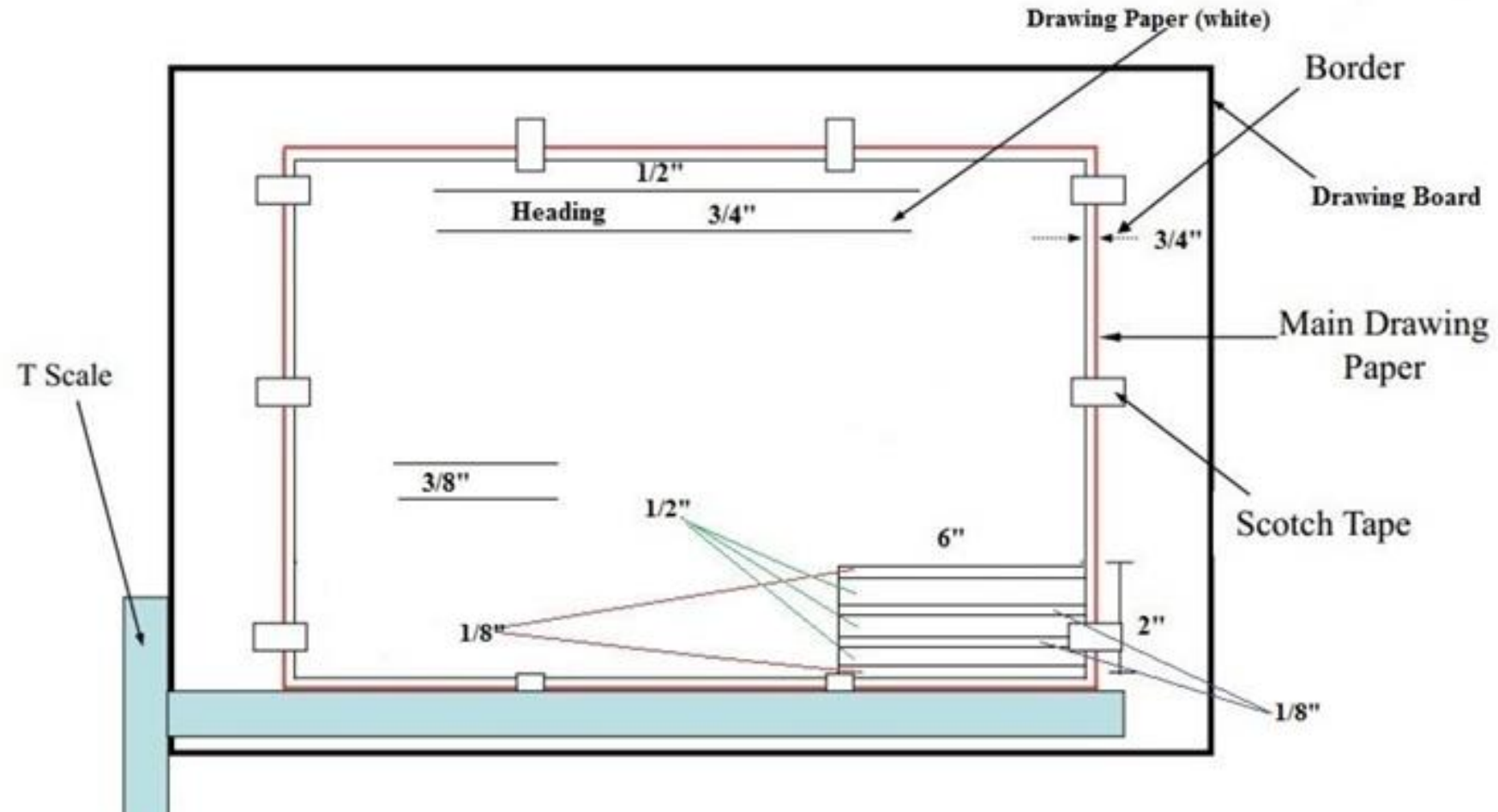
Drawing Inclined Lines



Drawing Inclined Lines



Preparation of Drawing Paper



Lettering

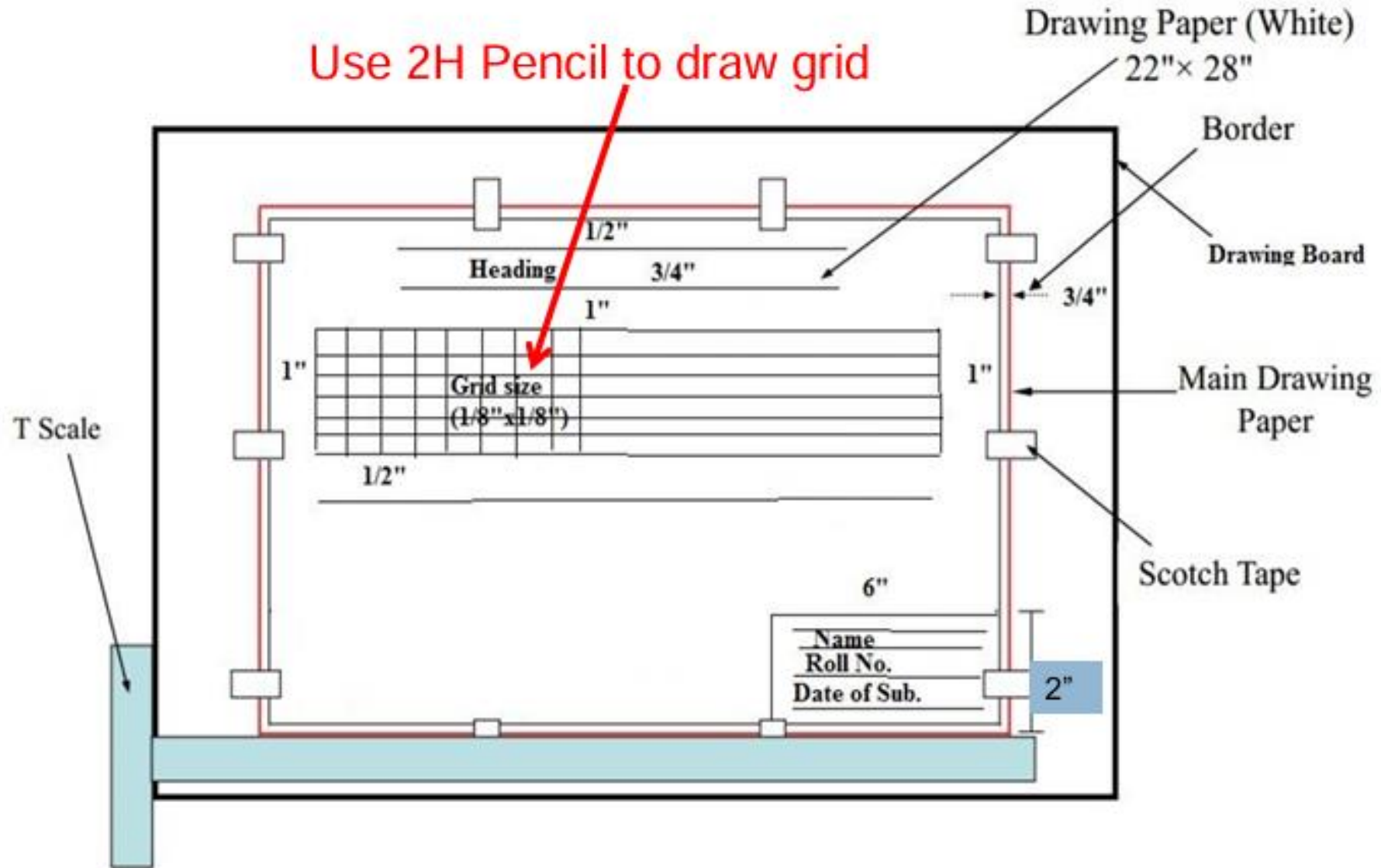


- Lettering is drawing, not writing.
- An engineering drawing should provide ***dimensions*** and ***specifications*** to communicate how the part is to be made.
- To eliminate errors, these notes must contain words made of ***uniform letters*** that are neat and easy to read.

Purpose of Neat Lettering

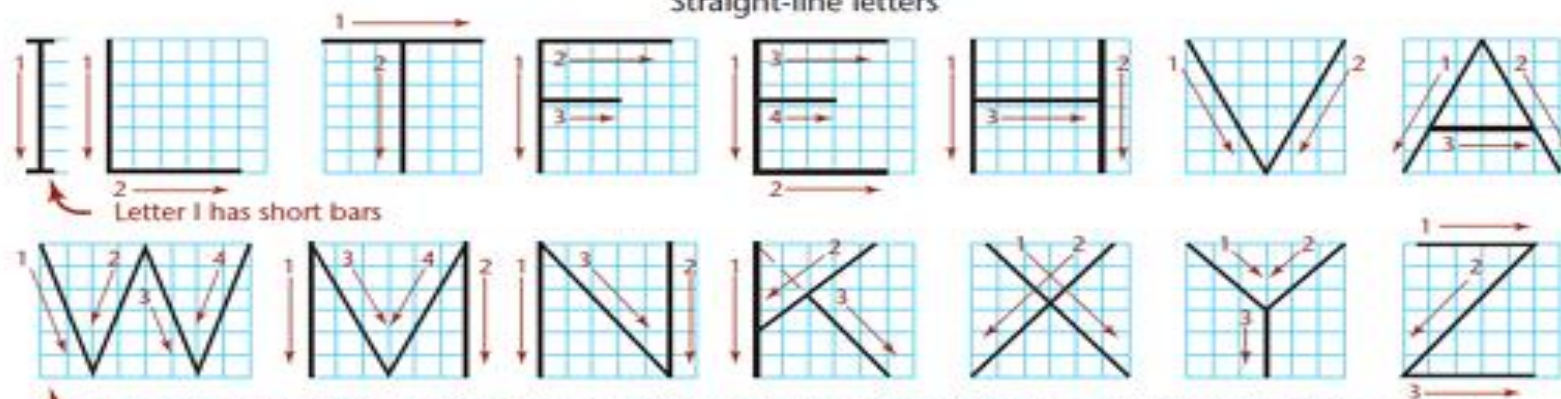


- Most important reason is to convey information without misunderstanding
- Increase overall appearance of the drawing

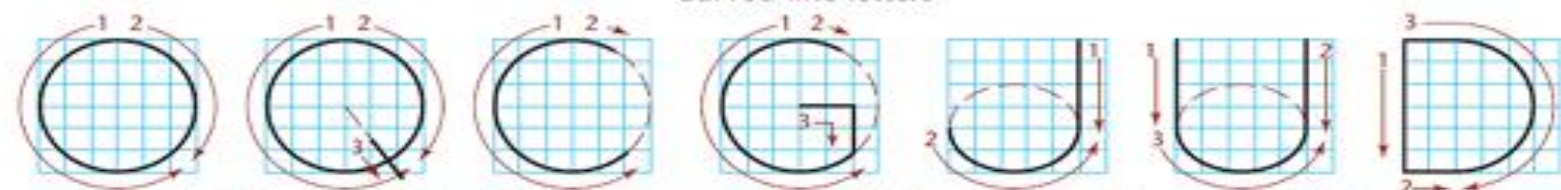


Vertical Capital Letters and Numerals

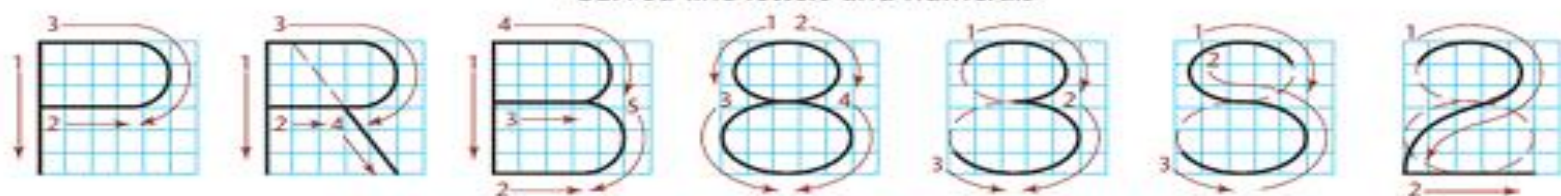
Straight-line letters



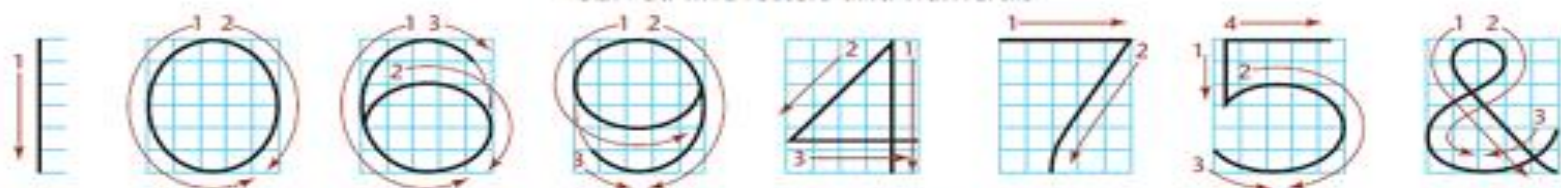
Curved-line letters



Curved-line letters and numerals



Curved-line letters and numerals



Guidelines

- All letters and numerals should write in a grid of **6 units height**.
- The width of letters and numerals
 - Letter **I**, or the numeral **1**, has **no** width
 - Letter **W** is **8** units wide
 - **TOM Q VAXY** are **6** units wide
 - **All other** letters and numerals are **5** units wide
 - Spacing of letters should be **2** units

Single Stroke Uppercase Letters



Guidelines for Writing Sentences

- Letters in words are not placed at equal distances from each other; they are placed so that the spaces between letters look ***equal***.
- The **distance between words**, called *word spacing*, should be equal.