



LP GAS LIMITED

(A Subsidiary of Bangladesh Petroleum Corporation)

NORTH PATENGA, CHATTOGRAM-4204

BANGLADESH

PHONE: +88-02-333301586

FAX: +88-02-333301217

E-mail: <sidd_hossain@yahoo.com>

INTERNATIONAL TENDER

[One Stage Two Envelope Tendering Method (OSTETM) for Turnkey Contract, ICT]

TENDER DOCUMENT

FOR

Design, Supply, Installation, Testing and Commissioning of LPG Cylinder retesting system (tilting testing ramp with 10 post) with Other machineries & equipment including related services

Invitation for Tender No: 28.27.0000.000.014.99.0001.25-286

Issued on: 30/04/2026

Tender Package No: Ctg/(Re-testing)/25

STD For Design, Supply, Installation, Testing and Commissioning of LPG Cylinder retesting system (tilting testing ramp with 10 post) with Other machineries & equipment including related services



LP GAS LIMITED
(A Subsidiary of Bangladesh Petroleum Corporation)
North Patenga, Chattogram-4204, Bangladesh

Ref No. 28.27.0000.000.014.99.0001.25- 286

Date: 30 April, 2026

Invitation for International tender notice for Design, Supply, Installation, Testing and Commissioning of LPG Cylinder retesting system (tilting testing ramp with 10 post) with Other machineries & equipment including related services.

LP Gas Limited (LPGL) hereby invites offer from reputed manufacturers/suppliers for Design, Supply, Installation, Testing and Commissioning of LPG Cylinder retesting system (tilting testing ramp with 10 post) with Other machineries & equipment including related services accordance with the terms and conditions set out hereinafter:

1	Ministry / Division	Ministry of Power, Energy & Mineral Resources / Energy & Mineral Resources Division			
2	Agency	Bangladesh Petroleum Corporation (BPC)			
3	Procuring Entity Name	LP Gas Limited (A Subsidiary of Bangladesh Petroleum Corporation)			
4	Procuring Entity District	Chattogram, Bangladesh.			
5	Invitation for	Design, Supply, Installation, Testing and Commissioning of LPG Cylinder retesting system (tilting testing ramp with 10 post) with Other machineries & equipment including related services.			
6	Invitation Ref. No.	28.27.0000.000.014.99.0001.25-286			
7	Date	30/04/2026			
KEY INFORMATION					
8	Procurement Method	One Stage Two Envelope Tendering Method (OSTETM) for Turnkey Contract, ICT			
FUNDING INFORMATION					
9	Budget & Source of fund	Own fund of LPGL			
PARTICULAR INFORMATION					
10	Tender Package No.	Ctg/(Re-testing)/25			
11	Tender Package Name	Design, Supply, Installation, Testing and Commissioning of LPG Cylinder retesting system (tilting testing ramp with 10 post) with Other machineries & equipment including related services.			
12	Tender Publication Date	03/05/2026			
13	Tender Last Selling Date	16/06/2026			
14	Tender Closing Date & Time	17/06/2026, Time- 14:30 Hrs (BST)			
15	Tender Opening Date & Time	17/06/2026, Time- 14:45 Hrs (BST)			
16	Name & Address of the Office(s)	Address			
	- Selling Place of Tender Documents	i) Bangladesh Petroleum Corporation, 10 th Floor, BTMC Bhaban, 2 Kawran Bazar, Dhaka, Bangladesh. ii) LP Gas Limited, North Patenga, Chattogram-4204, Bangladesh.			
	- Receiving Tender Documents	LP Gas Limited, North Patenga, Chattogram-4204, Bangladesh.			
	- Opening Tender Documents	-Do-			
17	Offer Validity Time	150 (One hundred fifty) days from the date of tender opening.			
18	Place / Date / Time of Pre-Tender Meeting (Optional)	Place: LP Gas Limited, North Patenga, Chattogram-4204, Bangladesh Date: 19/05/2026 Time: 11:00 Hrs (BST)			
INFORMATION FOR TENDERER					
19	Brief Eligibility and Qualification of Tenderer	As per Tender Document.			
20	Brief Description of Goods & Works	Design, Supply, Installation, Testing and Commissioning of LPG Cylinder retesting system (tilting testing ramp with 10 post) with Other machineries & equipment including related services.			
21	Brief Description of Related Services	Related Services are as per Tender Document.			
22	Price of Tender Documents	BDT 10,000 or US\$ 80 (Non-refundable) per set			
23	Lot No.	Identification of Lot	Location	Tender Security Amount	Completion Time in Weeks
	1	Single Lot	LP Gas Limited	BDT 20 (Twenty) Lac or US\$ 16300 (Sixteen Thousand Three Hundred)	32(Thirty Two) Weeks
PURCHASER DETAILS					
24	Name of Official Inviting Tender	Engr. Md. Siddique Hossain			
25	Designation of Official Inviting Tender	General Manager (O&D)			
26	Address of Official Inviting Tender	LP Gas Limited, North Patenga, Chattogram-4204, Bangladesh			
27	Contract Details of Official Inviting Tender	Tel: +88-02333301586, Mobile: +88-01715-694093 E-mail: sidd_hossain@yahoo.com			
28	Bidder(s) must submit the original money receipt for Tender Document along with their offer and Seal & Sign in every pages of tender documents.				
29	This Tender Notice/Document will be available at BPC website: www.bpc.gov.bd and LPGL website: www.lpgl.gov.bd				
30	The Procuring Entity reserves the right to accept or reject any or all offers in part or in full or annul the tender proceedings without assigning any reason.				

(Engr. Md. Siddique Hossain)
General Manager (O&D)

Technical Specification of LPG Cylinder retesting system (Tilting testing ramp with 10 posts) with Other machineries & equipment:

The Goods and Related Services shall comply with following Technical Specifications:

Item No	Name of Item or Related Services	Technical Specification and Standards
1	2	3
1	LPG Cylinder retesting system (Tilting testing ramp with 10 posts) with Other machineries & Equipment.	Technical Specification for LPG Cylinder retesting system (Tilting testing ramp with 10 posts) with Other machineries & Equipment are appended below. Country of Origin: USA/Japan/Canada/UK/Germany/Australia/France/Switzerland/Italy/Norway/Sweden/Netherlands/Denmark
2	LPG Cylinder Shot Blasting machine with dust collector	Technical Specification for LPG Cylinder Shot Blasting machine with dust collector are appended below. Country of Origin: USA/Japan/Canada/UK/Germany/Australia/France/Switzerland/Italy/Norway/Sweden/Netherlands/Denmark
3	Painting line (Manually) for LPG Cylinders	Technical Specification for Painting line (Manually) for LPG Cylinders are appended below. Country of Origin: USA/Japan/Canada/UK/Germany/Australia/France/Switzerland/Italy/Norway/Sweden/Netherlands/Denmark
4	Civil Works	Technical Specification for Civil Works are appended below.
Installation, Commissioning and Testing of LPG Cylinder retesting system (Tilting testing ramp with 10 post) with Other machineries & equipment.		

LPG Cylinder testing standard:

- ISO 22991:2004 Gas Cylinders — Transportable refillable welded steel cylinders for liquefied petroleum gas (LPG) — Design and construction
- DOT-4BA-240:1997 Welded steel cylinders made of definitely prescribed steels.

Calibration & Quality Assurance:

- Manufacturer must provide a certificate of quality assurance for the design and production of the equipment comply with international standard.
- All electrical lines, equipment and machineries shall be installed in accordance with IEC 60079 & all motors shall be ATEX/IECEX-certified.

Item-1: LPG Cylinder retesting system (Tilting testing ramp with 10 posts) with Other machineries & Equipment (1 Set):

LPG Cylinder retesting system (Tilting testing ramp with 10 posts) consists of following items as minimal-



- A) LPG Cylinder Hydrostatic pressure testing machine (Tilting testing ramp with 10 posts)
- Pressure test capacity: Minimum 34 Bar
 - Pressure build up time: Maximum 120s
 - Cylinder sizes: External Diameter (mm): $302 \text{ mm} \pm 2$, Length of cylinder: $560 \text{ mm} \pm 5$
 - No. of posts: 10 (Ten)
 - Sturdy foot metallic supports.
 - Tilting Sturdy metallic frame driven in rotation (0-180°) by a pneumatic driving unit
 - Each testing post is equipped with a cylinder support with adjustable height.
 - Hydraulic testing heads, driven by pneumatic jack.
 - Pneumatic valve pneumatically controlled to manage the testing cycle: water filling, air filling, draining.
 - Pressure gauge (0 to 60 bars) with its isolating valve and one diversion pipe ready to received a calibration gauge level.
 - Pneumatic components inside a pneumatic box with all associated equipment to manage the machine (including one emergency switch).
 - Emergency stop: valves closing in case of leaks.
 - Head rise prohibition if cycle is not completed.
 - Rotation controlled by maintained contact.
 - Protective covers, Emergency stop, Rotation controlled.
 - High efficiency and stability: PLC control system, touch screen operation interface, supporting parameter preset and data storage.
 - Safety protection: Multiple safety interlocks (pressure overload protection, emergency stop button, protective cover).
 - Industrial Panel (PC + Printer) to produce and print the automatic test report.
 - Pneumatic actuators to control the water and air valves
 - 10 nos analogic pressure switches to detect & report the pressure on the main Operator
 - Main switch-board with PLC & OP to control the process of the testing Unit
 - 10 nos explosion proof light with shade
 - Power supply: 380 to 420V, 3 Phase, 50 Hz.
 - Plug & Connection as per Bangladesh Standard
 - Display: Language: English; Unit: Metric/English
 - Spare parts and consumables for 2-years operations.

B) Water Skid:

- Main frame made in welded metal, compact and rigid
- low pressure centrifugal water pump driven by explosion proof electrical motor.
- Pneumatic high pressure water pump, (used to put water in pressure)
- Vertical galvanized water tank capacity: Minimum 4 m^3 (used to feed water into the cylinder) to ensure uninterrupted and continuous operation of the hydrostatic testing system.
- Mentioned units; drain system and filter to avoid residual.



(C) Air Skid:

- Main frame made in welded metal, compact and rigid.
- Vertical galvanized air tank (air receiver) Capacity: 2 m.³ or as needed.
- Mentioned units: drain system and filter to avoid residual
- **Screw compressor with dryer** (hook up to the retesting unit and existing compressor line).
- Type : Screw Type with Dryer.
- Control :Electro-Mechanical/Electronic along with overheat/overload/low oil level protection & other safety/protection devices as necessary etc.
- Capacity of Compressor : 5 m³/min \pm 10%
- Working Pressure : 10 Bar gauge.
- Cooling System : Air cooled.
- Duty : Continuous
- Particle Removal Down to : 0.01 ppm.
- Max. Remaining oil content : 0.01 ppm.
- Pressure Dew Point : + 5° C
- Mounting : Skid mounted
- Noise Level : 70 db (A) (Max)
- Power : 380 to 420V, 3 Phase, 50 Hz.
- Motor Type : Explosion proof.
- Motor Starter Type : Star-Delta starter.
- Drive System : V-Belt.
- Ambient Temperature : + 5°C to + 50°C
- Humidity : Upto 95%
- Altitude : Sea Level
- Atmosphere : Dusty & corrosive.
- Spare parts and consumables for 2-years operations.

D): SCREWING - UNSCREWING MACHINE (1 Set):

- Treated cylinder: Cylinder size: External Diameter (mm): 302 mm \pm 2, length of cylinder: 560 mm \pm 5
- Installation type: in line - stand alone (Atex)
- Type of valves: Compact valve (22mm version)
- Pneumatic or electric valve wrench
- Adjustable torque: Upto 250 Nm
- Electro-welded metal construction, painted in a RAL color to be determined
- Idle roller conveyor for manual loading and unloading of cylinders (stand alone version)
- Complete integration with a chain conveyor system (in line version)
- Pneumatic pantograph clamping vice, self-centering for different cylinder diameters
- Screwing cup integral with a sliding rod operated by a pneumatic cylinder for direct descent onto the Vertical Type valve (compact valve-22mm version)
- Electric motor controlling the tightening/untightening of the valve, balanced on a load cell for monitoring the tightening torque
- Tightening cycle control via a double safety button, monitored by a dedicated safety control unit
- Tightening torque adjustment upto 250 Nm via adjustment buttons and display
- Electric control panel with operating buttons
- Power & Electric Connections: As required and followed by Bangladesh standard
- Spare parts and consumables for 2-years operations.



E) Ultrasonic thickness gauge (2 Nos):

- Type: Portable, Digital ultrasonic thickness gauge,
- Thickness Range: 0.50 mm to 635 mm (0.020 in. to 25.0 in.) depending on material, transducer, surface conditions, temperature.
- Material velocity range: 0.508 mm/ μ s to 18.699 mm/ μ s (0.020 in./ μ s to 0.7362 in./ μ s)
- Resolution (selectable): Low: 0.1 mm (0.01 in.), Standard: 0.01 mm (0.001 in.)
- Transducer frequency range: 2.25 MHz to 10 MHz
- Operating temperature range: 5 °C to +50 °C
- Power Supply: AA alkaline batteries
- Standards: Designed for EN15317
- Display: Language: English; Unit: Metric/English

F) Gas Detector: Key Specifications of LPG Gas Detector (3 Nos):

- Detection Gas: LPG (Propane, Butane).
- Sensor Type: Infrared Technology (IR based sensor).
- Detection Range: 0-100% LEL (Lower Explosive Limit) or 0-1000 ppm.
- Alarm Threshold: Set at 10-20% LEL (e.g., 10% LEL for LPG).
- Alarm Output: Audible buzzer (e.g., 85dB) and visual LEDs (Red/Yellow).
- Response Time: Fast, typically under 30 seconds.
- Sensor Life: 5+ years.
- Operating Conditions: +5°C to +50°C (or wider), Up to 95% RH (Non-Condensing)
- IP Rating: IP30 (basic) to IP65 (dust/water resistant).
- Standards: CE, ATEX (explosion proof).

Item-2: Specification of LPG Cylinder Shot Blasting machine with dust collector (1 Set):

Description: Machine for shot blasting components having cylindrical shape, such as lpg Cylinder's, pipes; the components are conveyed by means of a special roll conveyor which makes them rotate at the same time by means of helicoidal motion. This motion is obtained by the special rolls shape (bi-conic) and the skew position of their axis as to axis of pieces movement. The rolls inside the cabinet are made of highly wear resistant materials and their shafts are protected and provided with labyrinth seals. The linear throughput speed depends on variation of number of rolls rotations and consequently different finishing degrees may be reached. The complete lining inside the shot blasting cabinet, as well as the high-quality material and equipment chosen to guarantee long life with low maintenance costs.

Main Features of Shot Blasting machine:

- Convenient loading and unloading of Cylinders
- Complete exposure of cylinders to the blast stream due to rotating action under the blast wheels
- Blasting cabinet lined with high wear resistant material
- Pitiless and compact machine design
- High 'operators' safety due to various safety features
- Low energy requirements
- Easy access to machine components for convenient maintenance



A) Specifications of the shot blasting machine: Shot blasting machine consists of following items as minimal-

- Capacity: Minimum 50 Lpg cylinder's/hour
- Dimension of lpg cylinder: External Diameter (mm): $302 \text{ mm} \pm 2$, length of cylinder: $560 \text{ mm} \pm 5$
- Blast system: Wheel blast
- No. of Blast wheel : 2 (Two) or As Needed
- Total Power requirement: Need to be set up to meet production capacity.
- Air Consumption: As needed.
- Enbloc structure made of steel sheets and sections which have been shaped and electro welded.
- Service access door sealed and hinged. The door is equipped with safety limit switches to prevent accidental starting of the turbines when they are open.
- Hopper for abrasive recovery and recycling, built-in the machine structure.
- Armour plating of blast cabinet with structure elements of austenitic 12/14% Mn steel, easily replaceable.
- Vestibules for limiting escape of metallic shot which is blasted by the wheels, provided with an adequate number of rubber-made wear resistant curtains.
- Feed screw conveyor. Hollow shaft running on self-aligning ball bearings with double dust protection, steel-made helix driven by worm geared motor.
- Bucket elevator.
- Abrasive cleaner device
- Initial Abrasive (normally steel round shot, Hardness 40-50 HRC) supplied for testing.
- Inspection platform at machine top, complete with handrail and ladder.
- Shot valve.
- Abrasive ducts. Set of ducts for abrasive. Pipe of wear resistant rubber with steel helix embodied for reinforcement.
- Wheel SG/350 –patented or equivalent.
- Roll conveyor inside the machine.
- Components detector composed by a photoelectric cells barrier at the entrance of the tunnel. The output signal, properly arranged, is used for automatic operation of shot valves. Exhausting ducts, including butterfly valves from air intakes until the cyclon trap.
- Electro welded sheet steel cyclone trap.
- Complete pneumatic system, including an intake ball-valve unit, filter pressure regulation/lubrication unit, solenoid valves fitted to base plate in a bank, flow regulation valves and flexible pipes for connection to the different devices, brackets, suitable snap fastener fittings etc.
- Switchboard located inside an electro-welded steel sheets cabinet, dust proof. Electric equipment of well-known manufacturers. Incorporated push-button panel.
- Electric system, ready for the connection of the various devices to the terminal board on the control panel located at machine side not farer than 2 m.
- Complete set of a synchronous three-phase IEC motors.
- Painting: rust-preventing priming coat and finishing coat with a textured, two-pack polyurethane topcoat with excellent hardness and easy application. Colour RAL 5021
- Power & Electric Connections: As required and followed by Bangladesh standard
- Spare parts and consumables for 2-years operations.



B) Specifications of Dust Collector : Dust Collector consists of following items as minimal-

- Dust collector dry type: self-cleaning consisting of a plate structure in whose inside are assembled filtering cartridges. Cartridges cleaning is done without stopping dust collector, by an air flow previously accelerated by a special nozzle, which removes the dust coat deposited on the cartridges surface. By means of a suitable electronic card for adjustment and a solenoid valves system, the filtering cartridges are cleaned in alternate lines, whose sequence and intensity may change and are adjustable through the relevant panel. The dust falling down into the hopper is collected in a metallic bin fixed at the bottom.
- Top Filtering body
- Bottom dust collector hopper
- Inspection and maintenance door.
- Set of antistatic polyester filtering cartridges.
- Set of special nozzles
- Blowing and cleaning system for cartridges through proper ducting.
- Sequential timer for washing the cartridges of dust collector.
- Pressure regulator with build in filter for compressed air.
- Probe for heat detection certified by ATEX.
- Electric and pneumatic installation on board.
- Particular grounding.
- Centrifugal fan
- Metallic bin to collect dust.
- Painting: Rust-preventing priming coat and finishing coat with a textured, two-pack polyurethane topcoat with excellent hardness and easy application. Colour RAL 5021.
- Silencer for exhauster of dust collector.
- Power & Electric Connections: As required and followed by Bangladesh standard
- Spare parts and consumables for 2-years operations.

Item-3: Specification of Painting line (manually) for LPG Cylinders (1 Set):

- Production capacity (painting rate): 50 pcs/hour
- Cylinder Size: External Diameter (mm): $302 \text{ mm} \pm 2$, Length of cylinder: $560 \text{ mm} \pm 5$,
- Valve type: Compact valve (22mm version)
- Painting Booth type: Manual
- Painting Booth Dimension: Booths need to be set up to meet production capacity.
- One liquid painting Booth for both primer & final coat
- All machine equipment will be delivered painted with epoxy topcoat paint.
- Painting Gun : 2 guns have to be used for painting (one is for primer and other on is for top coating)
- Paint type: Liquid paint
(Industrial Enamel with thinner should be used as top coating, Red oxide with thinner should be used as a Primer)
- Power & Electric Connections: As required and followed by Bangladesh standard
- Spare parts and consumables for 2-years operations.



FILTER UNIT

- Machine Type: Wet Type Dust Collector (Water Scrubber System)
- Capacity: 14,000 m³/h or as needed
- Filter body sheet thickness: St 0.37 – 3 mm
- Inner separator material: AISI 304 Stainless Steel – 3 mm
- Filter body construction: 2 or 3-piece modular design with airtight connections
- Water supply system: Float-controlled automatic water feeding system
- Water discharge system: Manual water drainage system
- Grounding: Filter body grounding included
- Service doors: Openable access doors on the body for easy inspection and maintenance
- Maintenance accessories: Maintenance platform, ladder, and safety railings included

RADIAL FAN

- Drive Type: Belt and pulley driven
- Airflow Capacity: 14,000 m³/h or as needed
- Static Pressure: as required
- Motor Power: As required
- Impeller Type: Backward-curved blades
- Vibration Isolation: Fan base with rubber vibration dampers
- Maintenance Access: Cleaning and maintenance cover on the fan
- Fan Housing Material: St 37 carbon steel
- Power & Electric Connections: As required and followed by Bangladesh standard

Frequency Inverter Fan Control Panel;

- AC drive control panel
- DC control circuit
- Residual current relay protection
- Dry contact outputs for alarm
- Working and alarm indicators on the control panel
- Phase control and protection relay
- The maximum distance between the fan and the control panel is 10 meters, included in the offer

WATER CURTAIN PAINT BOOTH

- Water tank material: 2 mm St 37 carbon steel
- Curtain material: 1.5 mm galvanized steel sheet
- Pump motor power: 2.2 kW – 1400 rpm or as needed
- Lighting: Total electrical output for illumination: Minimum 750 lux.
- Cabin Internal Dimensions: Booths need to be set up to meet production capacity.
- Power & Electric Connections: As required and followed by Bangladesh standard



Construction Features:

- The booth structure is made of 1.5 mm galvanized panels.
- The water tank and filtration tank are manufactured from 2 mm galvanized steel sheet.

Operating Principle:

- Air washing inside the cabin is performed by means of spray nozzles.
- With the combined water curtain and air washing system, paint particles are captured with high efficiency.
- Paint particles escaping from the water curtain are captured by the washing nozzles.
- These nozzles are made of polyamide material and can be easily dismantled and cleaned.
- A valve is provided for adjusting the water tank and nozzle pressure.
- Electrical and Maintenance Features:
 - The electrical control panel is mounted on the cabin.
 - Electric motors are protected by thermal relays.
 - Internal cabin cleaning can be carried out without removing screws; the water curtain can be removed easily, allowing access to rear separators and the suction filter of the water pump for
 - Easily maintenance and cleaning.
 - Construction of concrete foundation and anchor works at the area where the dust collection system will be installed

Overhead Conveyor:

- long of overhead conveyor: According to production capacity.
- advancing motion "Continuous" type
- Safety stoop

Special Hooks:

- The Special Hook is formed by two parts: the first, rigid with the overhead conveyor, has a pulley for the rotation of the cylinder and a hook in the end part, and the second is constituted by secondary hook for the collar of the cylinders and by a loop to link to the first hook.

Turning device of LPG Cylinder:

- A cylinder rotating device installed over the paint cabin to put in rotation the cylinder at the liquid paint application position.

Drying Booth:

- There must be system of drying the paint by air or some other means other than Oven.



Item-4: Civil works:

1. Demolish the existing "cylinder retesting system and other equipment" and transfer it to LPGL warehouse or as per direction of EIC.
2. Demolish the old infrastructure of the retesting system and new infrastructure shall be constructed by the successful tenderer for installation, commissioning and testing of LPG Cylinder retesting system (Tilting testing ramp with 10 post) with Other machineries & equipment. Successful tenderer shall supply all materials and consumables for the job.
3. Construct the necessary infrastructure for the installation of the machineries as mentioned in the technical specifications. Tenderer will have to bear all the expensed including the supply of materials, labour, tools, etc.
4. PWD schedule must be followed for building construction work
5. According to the Bangladesh National Building Code (BNBC), ventilation systems, fire detection & fire protection systems must be properly included in the cylinder retesting unit.
6. Cement sheet must be used on the roof.
7. Floor height should be high from the ground level (GL) about 2.5 feet.
8. Floor hardening is mandatory for the installation of the above-mentioned machinery.
9. Available space for the infrastructure: Area (82 feet × 35 feet).

The following requirements are as follows:

- All Columns are 12" × 12" ,Consider 3.0% Rebar
 - All Beams are 12" × 15" , Consider 2.5% Rebar
 - Footing: F1= 5'×5', thickness 15," Consider 1.5" Rebar
 - Footing: F2= 4'×4', thickness 12," Consider 1.5" Rebar
 - Infrastructure should be constructed according to the Column,Footing & Grade Beam Layout & Truss design (Attachment).
 - Side wall should be constructed by using ceramic brick.
 - Entry & Exit way for the movement of man, machine, Cylinder and other equipment.
9. The bidder will inspect the plant at his own responsibility. Then, he will prepare designs for installation of cylinder retesting machine, shot blasting machine, painting booth and other equipment and construct the infrastructure after obtaining approval from LPGL authorities.
10. Successful tenderer will have to bear all the expenses including the supply of materials for the construction of the infrastructure.



Installation, Commissioning and Testing required for LPG Cylinder retesting system (Tilting testing ramp with 10 posts) with Other machineries & equipment

Installation, Commissioning and Testing for LPG Cylinder retesting system (Tilting testing ramp with 10 posts) with Other machineries & equipment shall be done by the successful tenderer. Successful tenderer shall supply all materials and consumables for the job. Any tools, materials and accessories which is required for installation, commissioning and testing for LPG Cylinder retesting system (Tilting testing ramp with 10 posts) with Other machineries & equipment (As mentioned above) shall be arranged by the successful tenderer. Also Installation, Commissioning and Testing shall be completed by using his own manpower (mechanical technicians, electricians, welder, helper & labors). Tenderer shall visit the site to check scope of works and available facilities at LP Gas Limited. LP Gas Limited shall supply electricity & water only. Connection related pipes, fittings, cables and all other accessories shall be supplied by successful tenderer. LP Gas limited shall not be bear any cost for Installation, Commissioning and Testing for this job.

Drawings, Catalogue, Manual and Software:

- a) All drawings, Catalogue, Brochure, and Manual shall be in English.
- b) Original Catalogue/Brochure/Manual shall be submitted along with the Tender.
- c) Single line diagram shall be submitted along with the Tender Document.
- d) General arrangement drawing shall be submitted along with the Tender Document.
- e) Brand, Model & Country of Origin have to be mentioned by the bidder.

Approvals:

Successful bidder shall furnish required number of copies of drawing of General arrangement drawing, Single line diagram, Schematic diagram, Control and interconnection diagram for purchaser's review and Approval before construction and manufacturing the project as well as build up the diagram. Without purchaser Approval no drawings and design will be accepted.

Foreign Training/FAT:

For the sake of public safety, it is necessary to test LPG cylinders in accordance with international standards. In line with this objective, a comprehensive training module-based on international standards must be submitted along with the tender for providing training to develop adequate knowledge and skills regarding the re-testing system and related machinery to be supplied by the tenderer:

A team of 07 (seven) members from the Procuring entity, including the engineers of the concerned department, will travel abroad to participate in a 07 (seven) day training program excluding travel time by the successful supplier on operation, maintenance and troubleshooting of LPG cylinder re-testing system with other machineries and equipment. The supplier shall arrange the training program prior to the delivery of machineries & equipment. All expenses related to the training, including training facilities, & international & local transportation cost, per diem allowance, miscellaneous travel expenses; cost of proper accommodation, food, laundry shall be borne by the successful supplier.



On Site-Training:

The Successful supplier shall provide inhouse training for the operation and maintenance of LPG cylinder re-testing system and other machinery and equipment through qualified trainers at site, so that the officers/Operators are aware of the proper operation and maintenance of the machines and equipment as follows:

- a. Operation & maintenance engineer & other relevant officials for a period of minimum 7 (seven) working days on complete operation & maintenance, safety of the LPG cylinder re-testing system and other machinery and equipment and associated facilities.
- b. The training program shall be conducted just before starting the performance test run.
- c. On-site training curriculum shall be designed by the Contractor in consultation with the Company.
- d. On-site training shall consist of class room and practical training sessions.
- e. The Contractor shall submit training program and training manual for Company's approval 2 (Two) weeks prior to the start of training sessions.

Warranty:

Supplier shall provide the warranty on following issues.

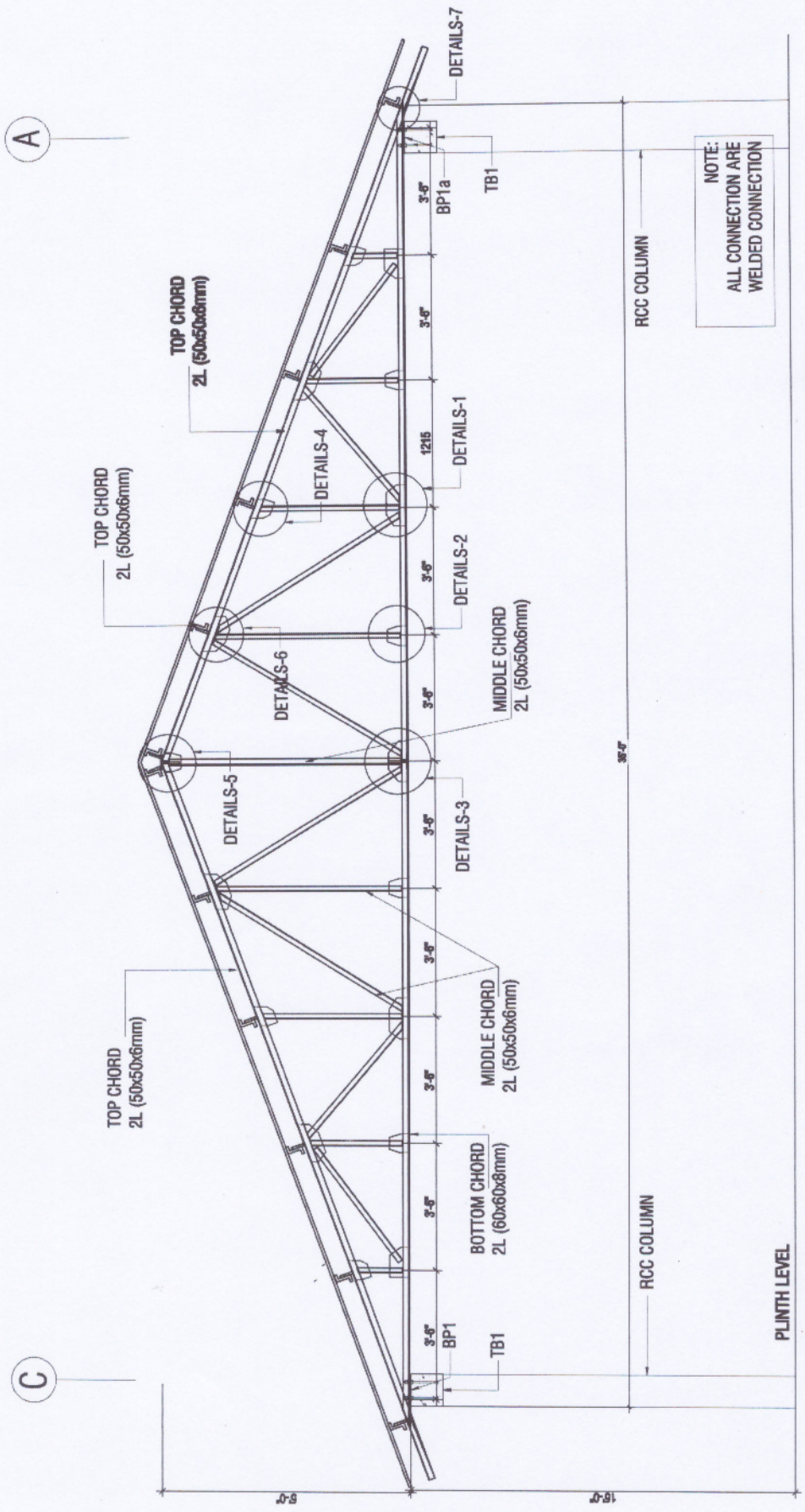
- a) For Materials and Equipment's or any portion thereof, the warranty shall remain valid for 365 days after Provisional Acceptance certificate issued.
- b) The Purchaser shall give notice to the Supplier stating the nature of any defects. Upon receipt of such notice, the Supplier shall expeditiously repair or replace the defective materials, equipment's or parts thereof, at no cost to the Purchaser.

Completion time:

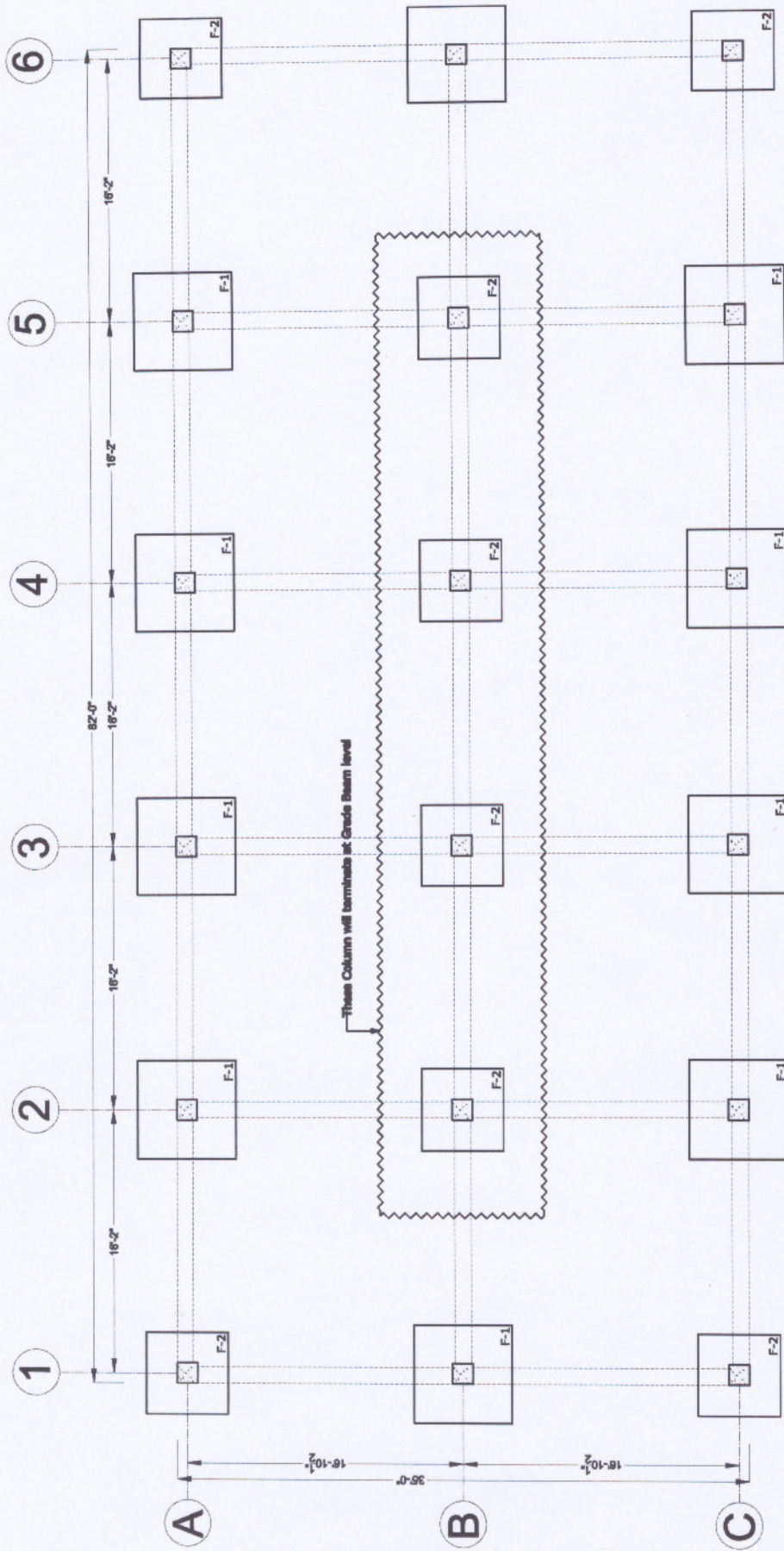
Design, engineering, procurement, supply, erection, commissioning & testing shall be completed within 8 (Eight) months after signing of contract/opening of L/C and receiving of the same by the supplier's Bank whichever is later. However, the bidder shall submit with their technical offer a time schedule for supply of materials, shipment, installation, commissioning and test run etc.

Special Tools: All special tools for this project must be provided for handling, operation, repair and maintenance purpose.





SECTION ON TRUSS-1



Column, Footing & Grade Beam Layout