



# Monthly Summary Report

National Influenza Surveillance, Bangladesh  
(NISB)



February 2026

Institute of Epidemiology, Disease Control & Research (IEDCR)  
National Influenza Centre (NIC)







**National Influenza Surveillance, Bangladesh (NISB)**  
**Monthly Enrolment by Different Age Groups**  
**February 2026**

Age Group (In Year)	ILI					SARI				
	Sample	Flu	Flu%	Covid-19	Covid-19%	Sample	Flu	Flu%	Covid-19	Covid-19%
<1	82	7	8.54	0	0.00	225	8	3.56	0	0.00
1 to <5	185	22	11.89	0	0.00	148	8	5.41	0	0.00
5 to <15	83	13	15.66	0	0.00	40	1	2.50	0	0.00
15 to<25	109	9	8.26	0	0.00	35	2	5.71	0	0.00
25 to<40	97	10	10.31	0	0.00	46	2	4.35	0	0.00
40 to<60	46	1	2.17	0	0.00	38	1	2.63	0	0.00
≥60	19	0	0.00	0	0.00	47	1	2.13	0	0.00
<b>Total</b>	621	62	9.98	0	0.00	579	23	3.97	0	0.00

**National Influenza Surveillance, Bangladesh (NISB)  
Sentinel Site wise Influenza Lab Results (ILI & SARI)  
March 2025 – February 2026**

District (Site)	Sample	Flu	Flu%	Flu A	Flu B	Flu A+B	AH1	AH3	AH1pdm09	AH5	AH3v	AH7	H1pd m09+ H3,VI C	H1pd m09, H3	H1pd m09, VIC	H3, VIC	B/Vi c	B/Y am a
<b>Thakurgaon (TDH)</b>	1547	444	28.70	216	201	27	0	108	108	0	0	0	0	0	20	7	201	0
<b>Naogaon (NDH)</b>	1550	210	13.55	88	113	9	0	56	32	0	0	0	0	0	4	5	113	0
<b>Satkhira (SDH)</b>	1480	257	17.36	116	137	4	0	77	39	0	0	0	0	0	1	3	137	0
<b>Narshingdi (NDH)</b>	1578	178	11.28	100	76	2	0	84	16	0	0	0	0	0	2	0	76	0
<b>Habiganj (HDH)</b>	1515	356	23.50	211	141	4	0	175	36	0	0	0	0	0	1	3	141	0
<b>Cox's Bazar (CDH)</b>	1487	186	12.51	86	98	2	0	59	27	0	0	0	0	0	2	0	98	0
<b>Joypurhat (JDH)</b>	1566	280	17.88	148	128	4	0	87	61	0	0	0	0	0	1	3	128	0
<b>DMCH (DMC)</b>	1543	206	13.35	100	103	3	0	82	18	0	0	0	0	1	0	2	103	0
<b>Patuakhali (PDH)</b>	1621	377	23.26	151	220	6	0	99	52	0	0	0	0	0	1	5	220	0
<b>Gazipur (GMCH)</b>	1786	364	20.38	205	154	5	0	146	59	0	0	0	0	0	0	5	154	0
<b>Total</b>	15673	2858	18.24	1421	1371	66	0	973	448	0	0	0	0	1	32	33	1371	0

## National Influenza Surveillance, Bangladesh (NISB)

### COVID-19 Lab Results of ILI & SARI

March 2025 – February 2026

District (Site)	ILI			SARI		
	Sample	Covid-19	Covid-19%	Sample	Covid-19	Covid-19%
Thakurgaon (TDH)	768	21	2.73	779	11	1.41
Naogaon (NDH)	776	9	1.16	774	7	0.90
Satkhira (SDH)	765	20	2.61	715	8	1.12
Narshingdi (NDH)	789	14	1.77	789	8	1.01
Habiganj (HDH)	789	15	1.90	726	15	2.07
Cox's Bazar (CDH)	740	8	1.08	747	7	0.94
Joypurhat (JDH)	765	15	1.96	801	4	0.50
DMCH (DMC)	748	8	1.07	795	8	1.01
Patuakhali (PDH)	759	16	2.11	862	9	1.04
Gazipur (GMCH)	782	18	2.30	1004	11	1.10
<b>Total</b>	7681	144	1.87	7992	88	1.10

**National Influenza Surveillance, Bangladesh (NISB)**  
**Influenza Lab & Covid-19 Results by Different Age Groups**  
**March 2025 – February 2026**

Age Group (In Year)	ILI					SARI				
	Sample	Flu	Flu%	Covid-19	Covid-19%	Sample	Flu	Flu%	Covid-19	Covid-19%
<1	1089	114	10.47	15	1.38	2010	199	9.90	32	1.59
1 to <5	2160	398	18.43	18	0.83	2082	494	23.73	14	0.67
5 to <15	1097	264	24.07	15	1.37	852	277	32.51	4	0.47
15 to<25	1254	233	18.58	35	2.79	753	209	27.76	12	1.59
25 to<40	1124	165	14.68	28	2.49	883	201	22.76	13	1.47
40 to<60	694	80	11.53	27	3.89	824	127	15.41	9	1.09
≥60	263	23	8.75	6	2.28	588	75	12.76	4	0.68
<b>Total</b>	7681	1277	16.63	144	1.87	7992	1582	19.79	88	1.10

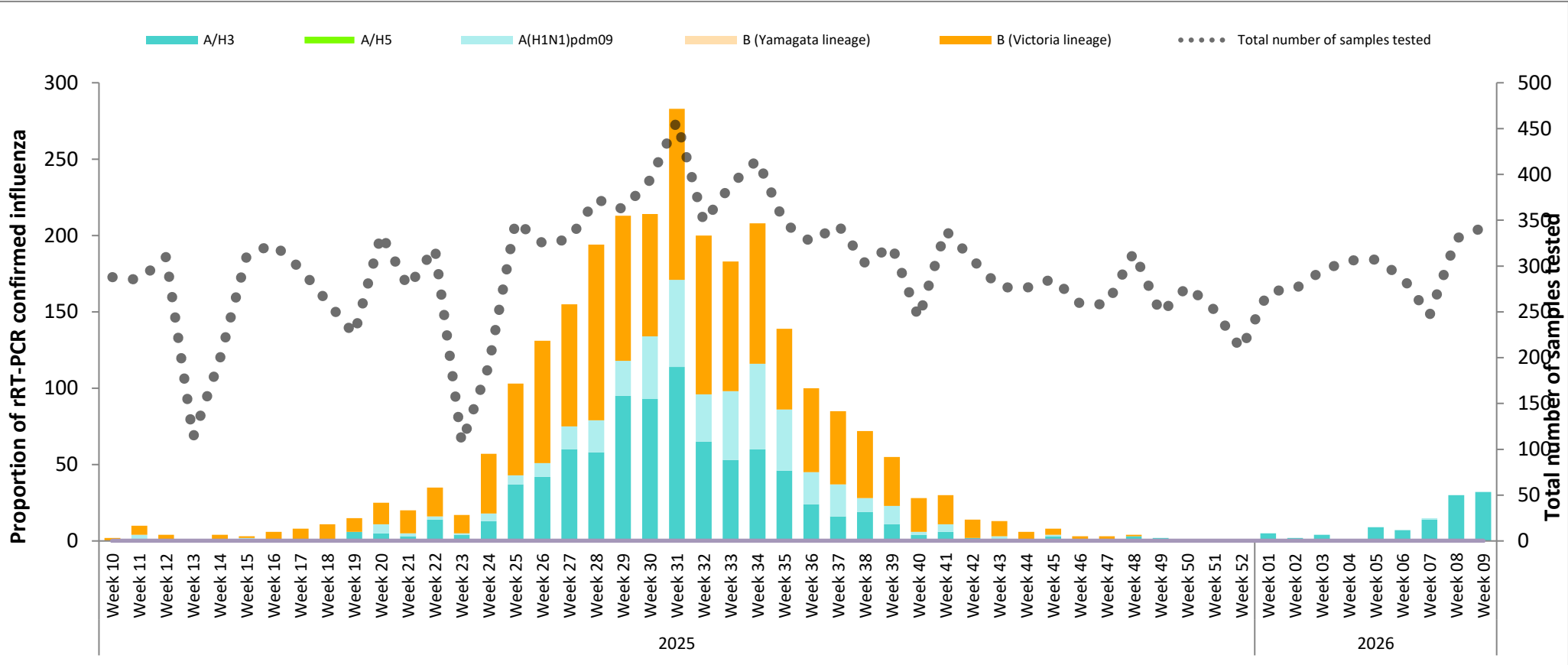
**National Influenza Surveillance, Bangladesh (NISB)  
RSV Lab Results of ILI & SARI (Age under two year)  
March 2025 – February 2026**

District (Site)	ILI			SARI		
	Sample	RSV	RSV%	Sample	RSV	RSV%
Thakurgaon (TDH)	135	5	3.70	302	29	9.60
Naogaon (NDH)	169	5	2.96	222	4	1.80
Satkhira (SDH)	293	44	15.02	321	74	23.05
Narshingdi (NDH)	242	30	12.40	302	88	29.14
Habiganj (HDH)	195	20	10.26	279	47	16.85
Cox's Bazar (CDH)	124	12	9.68	329	35	10.64
Joypurhat (JDH)	274	9	3.28	217	13	5.99
DMCH (DMC)	221	20	9.05	275	36	13.09
Patuakhali (PDH)	198	18	9.09	359	60	16.71
Gazipur (GMCH)	197	18	9.14	375	55	14.67
<b>Total</b>	2048	181	8.84	2981	441	14.79

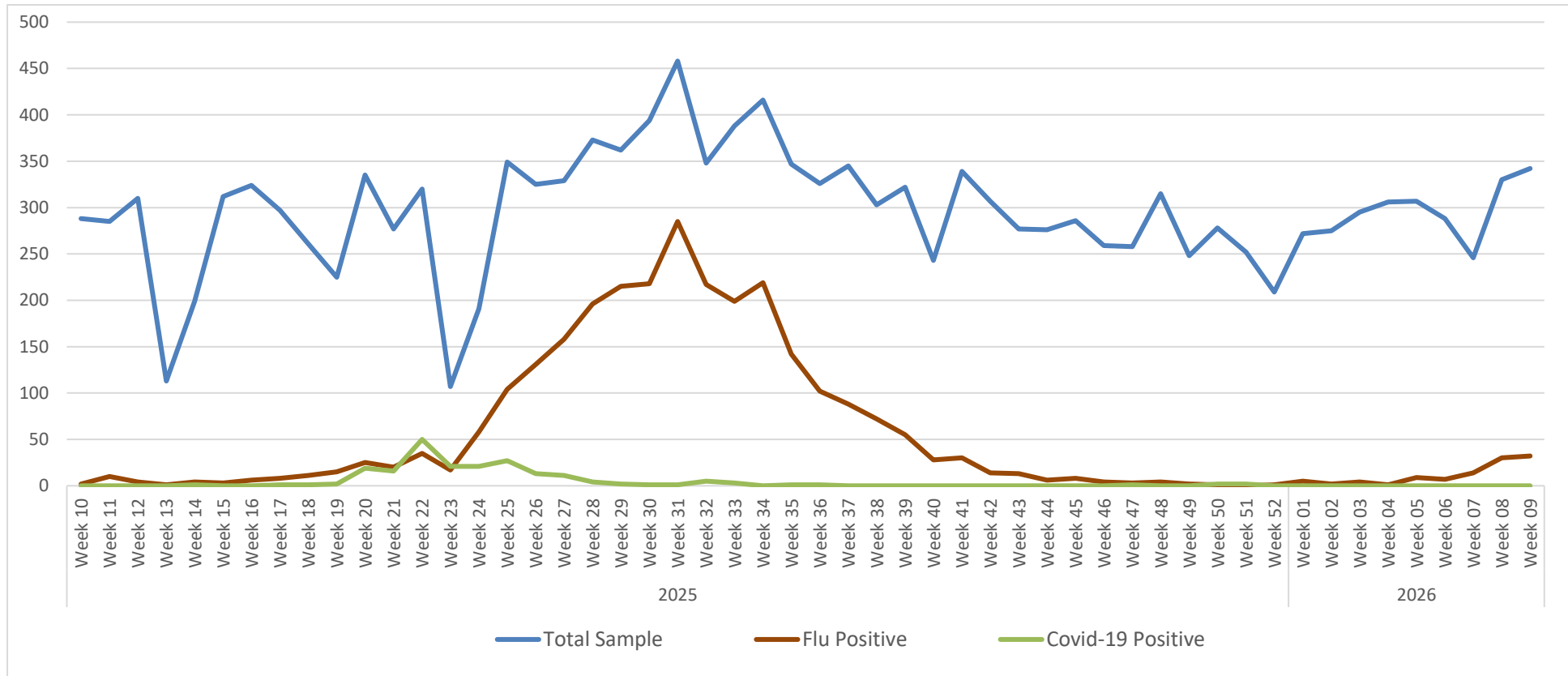
# National Influenza Surveillance, Bangladesh (NISB)

## Influenza Seasonality Graph (Weekly)

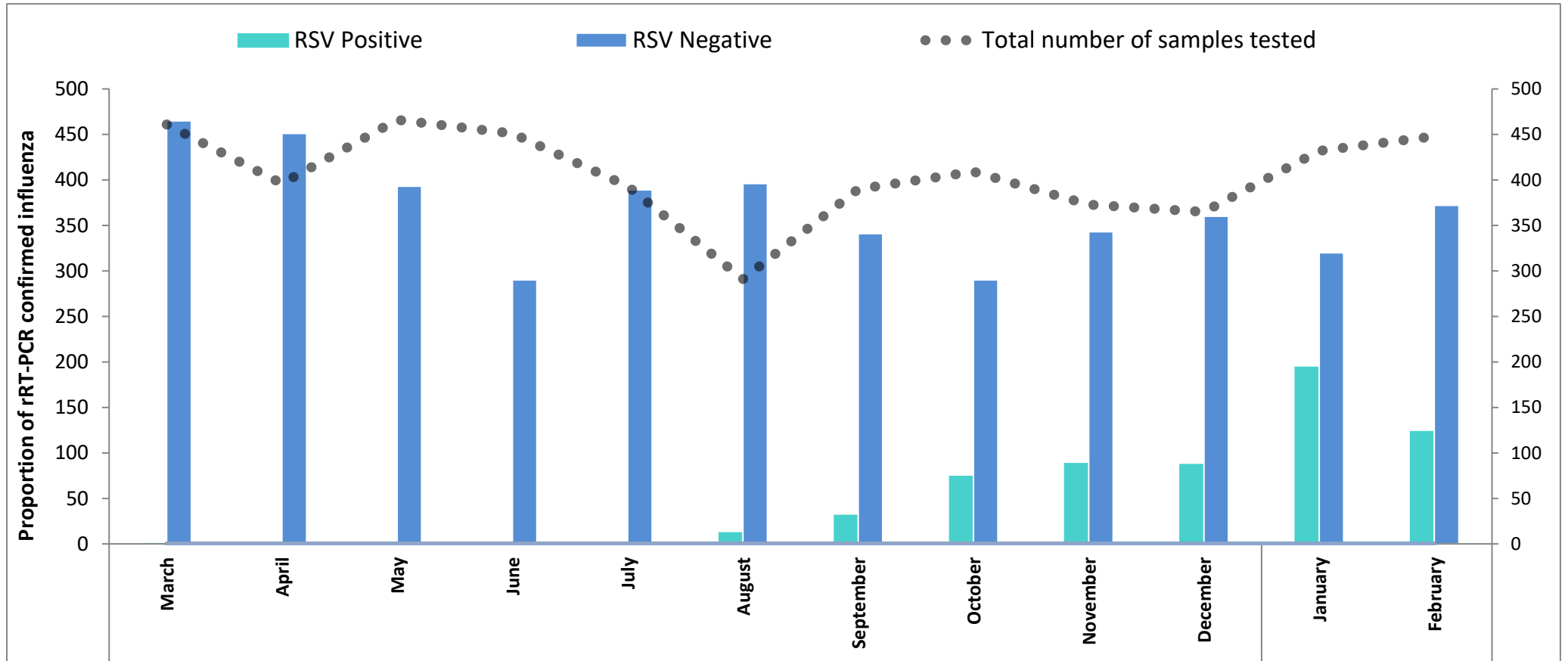
Week 10 (2025) - Week 09 (2026)



**National Influenza Surveillance, Bangladesh (NISB)**  
**Influenza & Covid-19 Seasonality Graph (Weekly)**  
**Week 10 (2025) - Week 09 (2026)**



**National Influenza Surveillance, Bangladesh (NISB)**  
**RSV Graph (Monthly) (Age under two year)**  
**March (2025) - February (2025)**

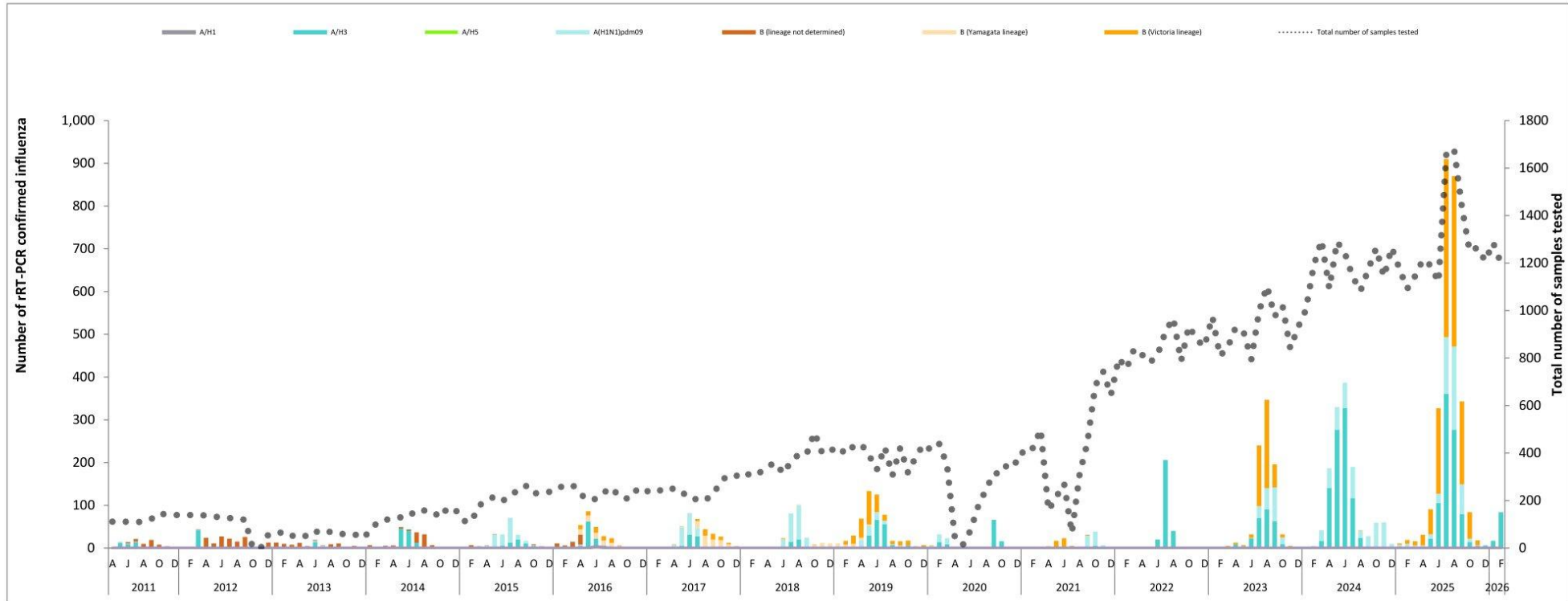


**Sentinel Site wise Influenza Lab Results (ILI & SARI)  
Surveillance Initiation – February 2026**

District (Site)		Initiation	Sample	Flu	Flu%	Flu A	Flu B	Flu A+B	AH1	AH3	AH1pd m09	AH5	AH3v	AH7	H1pd m09+ H3	H1pd m09+ H3,VI C	H1pd m09+ VIC	H3, VIC	B/Vic	B/Y ama
Thakurgaon(TDH)		April-2010	8146	1096	13.45	653	412	31	1	393	260	0	0	0	1	0	20	8	322	20
Gaibandha*( GDH)		April-2010	189	21	11.11	9	12	0	0	6	3	0	0	0	0	0	0	0	0	0
Naogaon (NDH)		April-2010	8571	671	7.83	357	302	12	1	230	128	0	0	0	0	0	4	6	225	27
Sirajganj* (SDH)		April-2010	283	38	13.43	14	24	0	0	12	2	0	0	0	0	0	0	0	0	0
Kushtia* (KDH)		April-2010	157	17	10.83	4	13	0	0	1	3	0	0	0	0	0	0	0	0	0
Satkhira (SDH)		April-2010	7894	667	8.45	430	231	6	0	275	156	0	0	0	0	0	1	4	194	4
Netrokona* (NDH)		April-2010	268	32	11.94	15	17	0	0	11	4	0	0	0	0	0	0	0	0	0
Narshindi (NDH)		April-2010	8480	591	6.97	381	201	9	1	242	138	0	0	0	0	2	3	4	155	16
Faridpur* (FDH)		April-2010	290	34	11.72	11	23	0	0	6	5	0	0	0	0	0	0	0	0	0
Habigan (HDH)		April-2010	9060	968	10.68	663	297	8	0	445	218	0	0	0	1	0	2	6	240	17
Jhalokathi* (JDH)		April-2010	280	40	14.29	9	31	0	0	7	2	0	0	0	0	0	0	0	0	0
Feni* (FDH)		April-2010	284	37	13.03	19	18	0	1	13	5	0	0	0	0	0	0	0	0	0
Rangamati* (RDH)		April-2010	256	39	15.23	17	22	0	1	9	7	0	0	0	0	0	0	0	0	0
Cox's Bazar (CDH)		April-2010	8058	598	7.42	390	205	3	0	250	139	0	0	0	2	0	2	0	142	14
Joypurhat (JDH)		April-2014	7793	671	8.61	409	256	6	0	252	157	0	0	0	0	0	3	3	223	15
DMCH (DMC)		Jan-15	7714	553	7.17	366	181	6	0	219	145	0	0	0	2	0	0	4	165	14
Patuakhali (PDH)		April-2014	8721	961	11.02	597	352	12	0	402	194	0	0	0	2	0	3	7	338	9
Gazipur (GMCH)		Aug-2015	8264	898	10.87	611	280	7	0	424	185	0	0	0	1	0	2	5	254	26
Total			84708	7932	9.36	4955	2877	100	5	3197	1751	0	0	0	9	2	40	47	2258	162

\*Surveillance Sites have been closed

**National Influenza Surveillance, Bangladesh (NISB)**  
**Influenza Seasonality Graph**  
**April 2011 – February 2026**



**Summary: February 2026**

- **Weekly Sample Transportation: Done**
- **Total Sample Collected ILI: 621 SARI: 579**
- **Total flu positive: 85**
- **Flu positivity: 07.03%**
- **Total Covid-19 Positive: 0**
- **Covid-19 Positivity: 00.00%**