



## Monthly summary report

# Hospital-Based Human Influenza Surveillance in Bangladesh

**January 2026**

**Hospital based influenza surveillance**  
**Monthly hospital-wise influenza lab results**  
**January 2026**

Hospital	District	Sample	Flu	Flu %	Flu A	Flu B	Flu A+B	Flu A/H1	Flu A/H3	Flu A/H5	Flu A/ (H1N1)pdm09	Flu B Yamagata	Flu B Victoria
CuMCH	Cumilla	74	38	51	38	0	0	0	38	0	0	0	0
JGH	Jashore	65	1	2	1	0	0	0	1	0	0	0	0
JRRMCH	Sylhet	67	3	4	3	0	0	0	3	0	0	0	0
CMCH	Chattogram	73	1	1	1	0	0	0	0	1	0	0	0
DjMCH	Dinajpur	56	0	0	0	0	0	0	0	0	0	0	0
KGH	Dhaka	61	1	2	1	0	0	0	1	0	0	0	0
		<b>396</b>	<b>44</b>	<b>11</b>	<b>44</b>	<b>0</b>	<b>0</b>	<b>0</b>	<b>43</b>	<b>1</b>	<b>0</b>	<b>0</b>	<b>0</b>

**Hospital based influenza surveillance**  
**Monthly enrollment by different wards (Medicine, Pediatrics and CCU)**  
**January 2026**

Hospital	District	Medicine ward			Pediatrics ward (≤12 years of age)			Coronary Care Unit (CCU)		
		Sample	Flu	Flu %	Sample	Flu	Flu %	Sample	Flu	Flu %
CuMCH	Cumilla	48	26	54	24	11	46	2	1	50
JGH	Jashore	37	1	3	28	0	0	0	0	0
JRRMCH	Sylhet	41	0	0	25	3	12	1	0	0
CMCH	Chattogram	40	0	0	33	1	3	0	0	0
DjMCH	Dinajpur	31	0	0	25	0	0	0	0	0
KGH	Dhaka	35	1	3	26	0	0	0	0	0
		<b>232</b>	<b>28</b>	<b>12</b>	<b>161</b>	<b>15</b>	<b>9</b>	<b>3</b>	<b>1</b>	<b>33</b>

**Hospital based influenza surveillance**  
**Monthly enrollment by different surveillance groups**  
**January 2026**

Hospital	District	SARI (aged ≥ 5 years)			SARI (aged < 5 years)			ILI <sup>‡</sup>		
		Sample	Flu	Flu %	Sample	Flu	Flu %	Sample	Flu	Flu %
CuMCH	Cumilla	16	6	38	8	1	13	50	31	62
JGH	Jashore	6	0	0	9	0	0	50	1	0
JRRMCH	Sylhet	15	0	0	8	0	0	44	3	0
CMCH	Chattogram	14	0	0	9	1	11	50	0	0
DjMCH	Dinajpur	6	0	0	8	0	0	42	0	0
KGH	Dhaka	9	0	0	10	0	0	42	1	0
		<b>66</b>	<b>6</b>	<b>9</b>	<b>52</b>	<b>2</b>	<b>4</b>	<b>278</b>	<b>36</b>	<b>13</b>

**Hospital based influenza surveillance**  
**Influenza results by different age groups**  
**January 2026**

Age groups	January 2026									Initiation—January 2026								
	SARI (aged ≥ 5 years)			ILI <sup>‡</sup>			SARI (aged < 5 years)			SARI (aged ≥ 5 years)			ILI <sup>‡</sup>			SARI (aged < 5 years)		
	Sample	Flu	Flu %	Sample	Flu	Flu %	Sample	Flu	Flu %	Sample	Flu	Flu %	Sample	Flu	Flu %	Sample	Flu	Flu %
<1 Year	-	-	-	18	1	6	31	1	3	-	-	-	3,082	207	7	13,061	847	6
1-4 Years	-	-	-	43	3	7	21	1	5	-	-	-	5,529	819	15	6,528	1120	17
5-14 Years	12	1	8	43	10	23	-	-	-	6,429	1438	22	3,880	869	22	-	-	-
15-24 Years	18	3	17	71	12	17	-	-	-	6,222	1445	23	4,190	790	19	-	-	-
25-39 Years	14	0	0	62	9	15	-	-	-	6,506	1280	20	3,356	530	16	-	-	-
40-59 Years	12	2	17	29	1	3	-	-	-	8,158	1325	16	2,285	303	13	-	-	-
≥ 60 Years	10	0	0	12	0	0	-	-	-	8,221	1275	16	765	79	10	-	-	-
	<b>66</b>	<b>6</b>	<b>9</b>	<b>278</b>	<b>36</b>	<b>13</b>	<b>52</b>	<b>2</b>	<b>4</b>	<b>35,536</b>	<b>6,763</b>	<b>19</b>	<b>23,087</b>	<b>3,597</b>	<b>16</b>	<b>19,589</b>	<b>1,967</b>	<b>10</b>

**Hospital based influenza surveillance  
Hospital-wise influenza lab results  
Surveillance initiation—January 2026**

Hospital	District	Initiation	Sample	Flu	Flu %	Flu A <sup>ψ</sup>	Flu B <sup>λ</sup>	Flu A+B <sup>‡</sup>	Flu A/H1	Flu A/H3	Flu A/H5	Flu A/H7	Flu A/ (H1N1)pdm09	Flu B Yamagata	Flu B Victoria
DNMCH <sup>γ</sup>	Dhaka	Jun 2007	2,061	312	15	201	111	0	15	84	0	0	102	13	7
CBMCH <sup>γ</sup>	Mymensingh	Oct 2007	2,053	302	15	206	96	0	7	107	1	0	91	16	10
JIMCH <sup>‡</sup>	Kishoregonj	Sep 2007	10,054	1,870	19	1230	639	1	9	714	0	0	505	64	405
RMCH <sup>‡</sup>	Rajshahi	May 2007	6,124	691	11	476	215	0	14	298	0	0	162	39	115
SZRMCH <sup>γ</sup>	Bogra	Sep 2007	3,865	653	17	439	213	1	12	256	0	0	170	29	39
LAMB <sup>†</sup>	Dinajpur	Oct 2007	1,171	112	10	72	40	0	7	41	0	0	24	1	0
BBMH <sup>†</sup>	Chattogram	Aug 2007	1,440	157	11	118	39	0	13	42	0	0	63	3	0
CuMCH <sup>‡</sup>	Cumilla	Oct 2007	7,987	1073	13	721	349	3	9	428	1	0	282	28	171
KMCH <sup>‡</sup>	Khulna	Jul 2007	5,141	760	15	543	215	2	16	300	0	0	222	17	137
JGH <sup>γ†</sup>	Jashore	Sep 2007	7,954	1691	21	1121	565	5	10	641	2	0	467	26	401
JRRMCH	Sylhet	Jul 2007	7,922	1324	17	866	455	3	16	492	1	0	355	34	278
SBMCH <sup>‡</sup>	Barishal	Aug 2007	8,873	1296	15	854	438	4	7	454	0	0	389	56	233
CMCH	Chattogram	Apr 2014	7,988	1263	16	884	375	4	0	471	1	0	410	41	314
DjMCH	Dinajpur	Apr 2014	5,428	822	15	543	278	1	0	303	0	0	237	28	229
KGH <sup>‡</sup>	Dhaka	Nov 2025	151	1	1	1	0	0	0	1	0	0	0	0	0
			<b>78,212</b>	<b>12,327</b>	<b>16</b>	<b>8,275</b>	<b>4,028</b>	<b>24</b>	<b>135</b>	<b>4,632</b>	<b>6</b>	<b>0</b>	<b>3,479</b>	<b>395</b>	<b>2,339</b>

<sup>λ</sup> Influenza B lineages initiated in January 2016

<sup>ψ</sup> rRT-PCR result of four samples were equivocal positive for Influenza A.

<sup>γ</sup> Three samples were co-infected with both A(H3) and A(H1N1)pdm09.

<sup>λ</sup> Three samples were co-infected with both Influenza B (Yamagata lineage) and Influenza B (Victoria lineage), another ten samples were unsubtypeable.

<sup>‡</sup> Three samples were co-infected with both Influenza A(H1N1)pdm09 and Influenza B (Victoria lineage).

<sup>i</sup> Nine samples were co-infected with both Influenza A(H3) and Influenza B (Victoria lineage).

<sup>†</sup> Surveillance activities ended at LAMB (Dinajpur) and BBMH (Chittagong) in May 2016.

Outpatient ILI surveillance discontinued in October 2017.

<sup>γ</sup> Surveillance activities ended at DNMCH (Dhaka), CBMCH (Mymensingh), SZRMCH (Bogra) and JGH (Jessore) in October 2017.

<sup>‡</sup> Surveillance activities reinitiated at Cumilla Medical College Hospital (CuMCH), Cumilla in January 2018.

<sup>†</sup> Surveillance activities reinitiated at Jashore 250 bed General Hospital (JGH), Jashore in December 2018.

Note: Surveillance activities extended to the intensive care units (ICU) and coronary care unit (CCU) of the participating hospitals in January 2018.

<sup>φ</sup> Intensive care units (ICU) surveillance discontinued in January 2019.

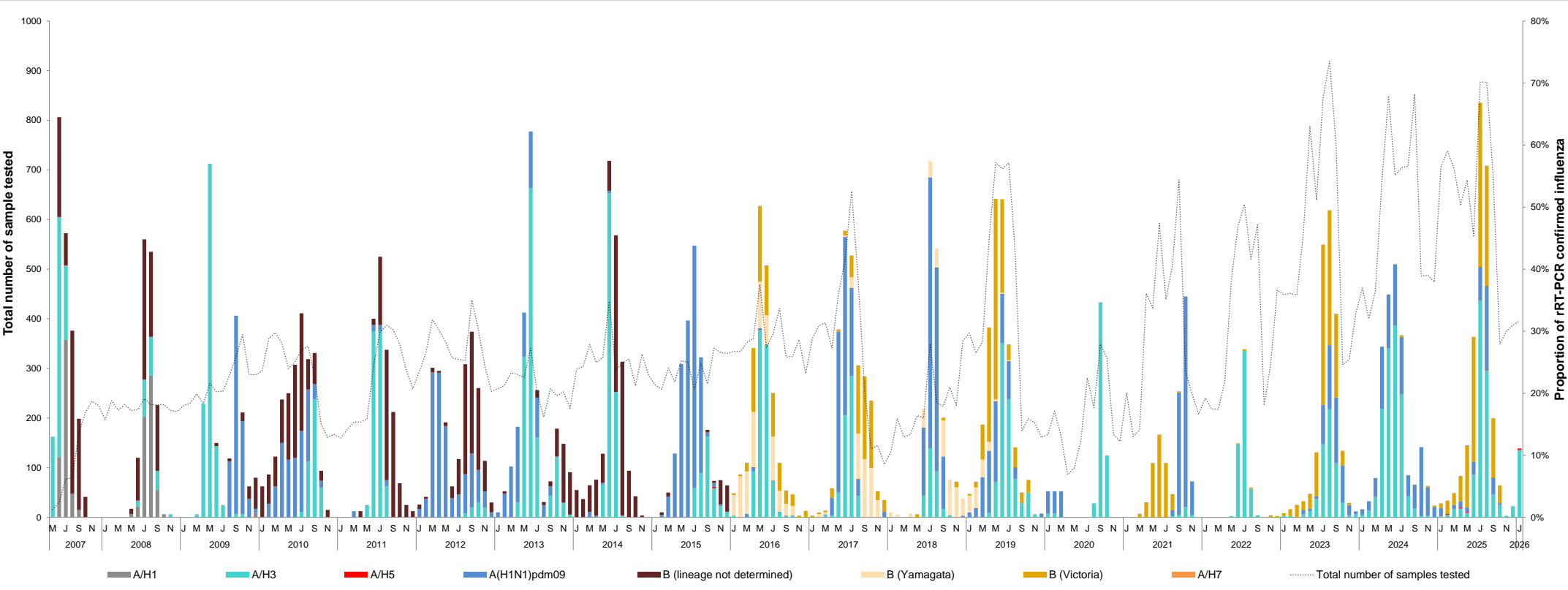
Outpatient ILI surveillance reinitiated at JRRMCH (Sylhet), CMCH (Chattogram) and DjMCH (Dinajpur) in November 2022.

Outpatient ILI surveillance reinitiated at JIMCH (Kishoregonj) and JGH (Jashore) in December 2022.

<sup>‡</sup> Surveillance activities ended at JIMCH (Kishoregonj), RMCH (Rajshahi), KMCH (Khulna) and SBMCH (Barishal) in October 2025.

<sup>‡</sup> Surveillance activities initiated at Kurmitola General Hospital (KGH), Dhaka in November 2025.

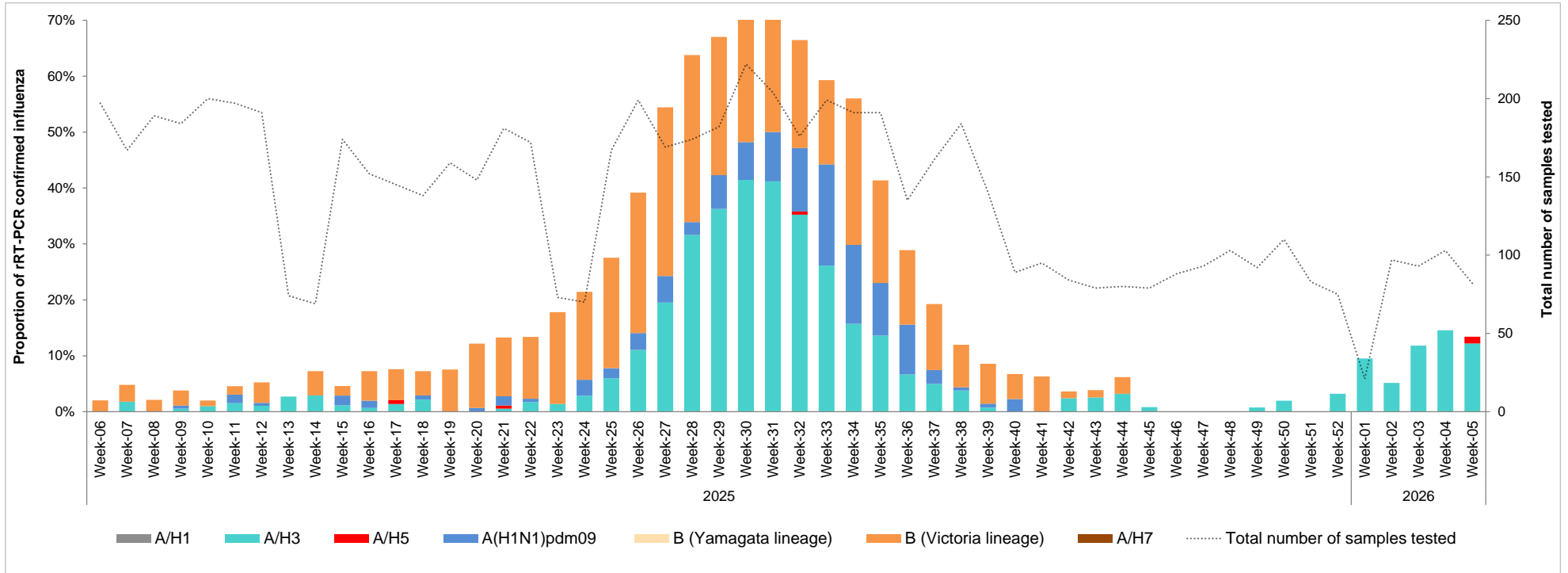
**Hospital based influenza surveillance**  
**Influenza seasonality graph**  
**May 2007—January 2026**



# Hospital based influenza surveillance

## Influenza seasonality graph

### Week 06 of 2025 to week 05 of 2026





**Hospital based influenza surveillance**  
**Hospital-wise SARS-CoV-2 lab results**  
**January 2026**

Hospital	District	January 2026			March 2020—January 2026		
		Sample	SARS-CoV-2	SARS-CoV-2 %	Sample	SARS-CoV-2	SARS-CoV-2 %
CuMCH	Cumilla	74	0	0	3,009	141	5
JGH	Jashore	65	0	0	4,070	259	6
JRRMCH	Sylhet	67	0	0	4,089	201	5
CMCH	Chattogram	73	0	0	5,447	299	5
DjMCH	Dinajpur	56	0	0	3,765	168	4
KGH	Dhaka	61	0	0	151	0	0
		<b>396</b>	<b>0</b>	<b>0</b>	<b>20,531</b>	<b>1,068</b>	<b>5</b>

**Hospital based influenza surveillance  
Influenza and SARS-CoV-2 positivity graph  
March 2020—January 2026**

