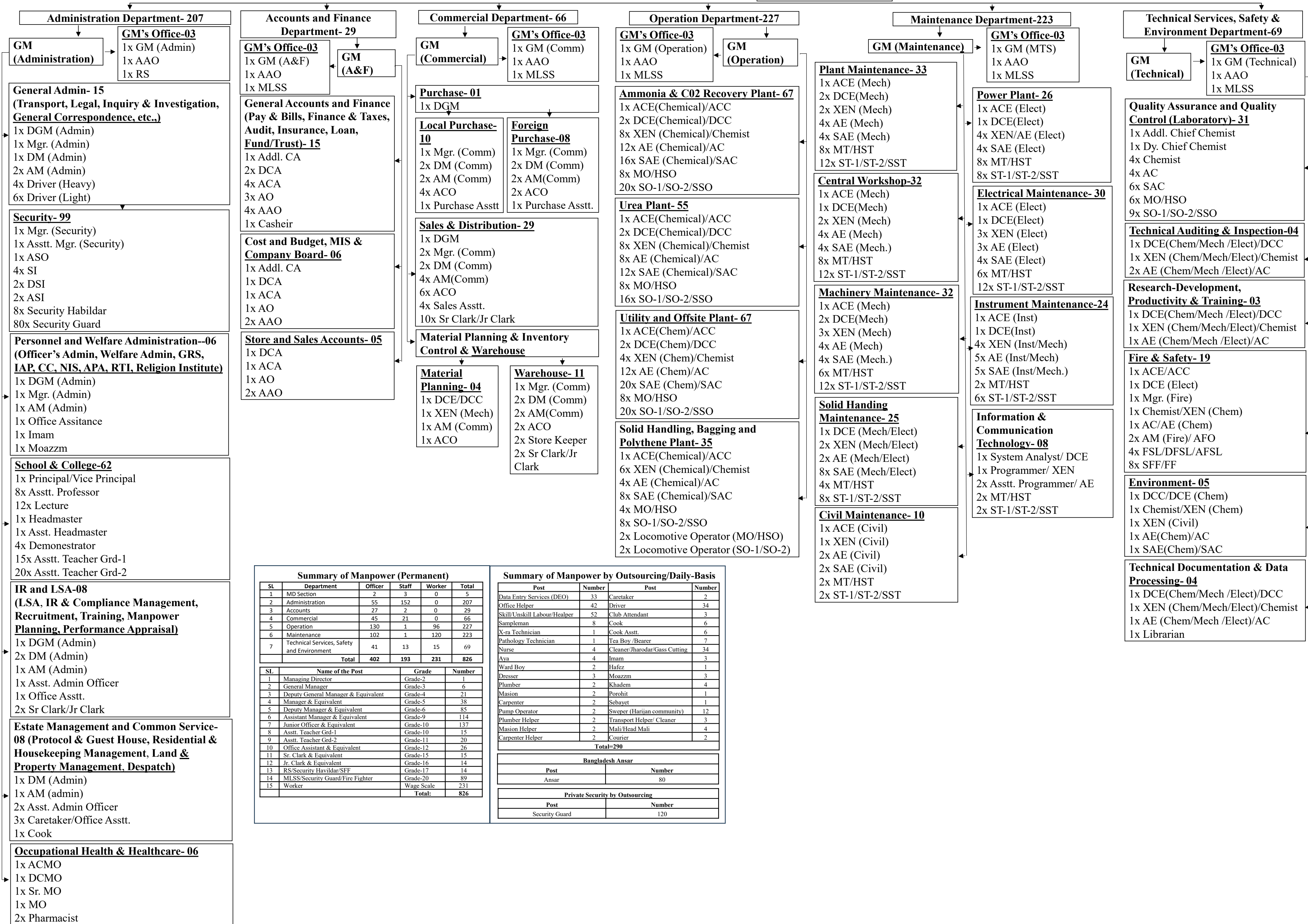


GPUFPLC (826)

Managing Director

MD's Office-05
 1x Managing Director
 1x AM (Admin)
 1x PA/OA
 1x Sr. DEO
 1x RS



Sl	Department	Officer	Staff	Worker	Total
1	MD Section	2	3	0	5
2	Administration	55	152	0	207
3	Accounts	27	2	0	29
4	Commercial	45	21	0	66
5	Operation	130	1	96	227
6	Maintenance	102	1	120	223
7	Technical Services, Safety and Environment	41	13	15	69
Total		402	193	231	826

Sl	Name of the Post	Grade	Number
1	Managing Director	Grade-2	1
2	General Manager	Grade-3	6
3	Deputy General Manager & Equivalent	Grade-4	21
4	Manager & Equivalent	Grade-5	38
5	Deputy Manager & Equivalent	Grade-6	85
6	Assistant Manager & Equivalent	Grade-9	114
7	Junior Officer & Equivalent	Grade-10	137
8	Asstt. Teacher Grd-1	Grade-10	15
9	Asstt. Teacher Grd-2	Grade-11	20
10	Office Assistant & Equivalent	Grade-12	26
11	Sr. Clark & Equivalent	Grade-15	15
12	Jr. Clark & Equivalent	Grade-16	14
13	RS/Security Havildar/SFF	Grade-17	14
14	MLSS/Security Guard/Fire Fighter	Grade-20	89
15	Worker	Wage Scale	231
Total:			826

Post	Number	Post	Number
Data Entry Services (DEO)	33	Caretaker	2
Office Helper	42	Driver	34
Skill/Unskill Labour/Healper	52	Club Attendant	3
Sampleman	8	Cook	6
X-ra Technician	1	Cook Asstt.	6
Pathology Technician	1	Tea Boy /Bearer	7
Nurse	4	Cleaner/Jharodar/Gass Cutting	34
Ava	4	Imam	3
Ward Boy	2	Hafez	1
Dresser	3	Moazzm	3
Plumber	2	Khadem	4
Masion	2	Porohit	1
Carpenter	2	Sebayet	1
Pump Operator	2	Sweper (Harijan community)	12
Plumber Helper	2	Transport Helper/ Cleaner	3
Masion Helper	2	Mali/Head Mali	4
Carpenter Helper	2	Courier	2
Total=290			

Bangladesh Ansar	
Post	Number
Ansar	80

Private Security by Outsourcing	
Post	Number
Security Guard	120