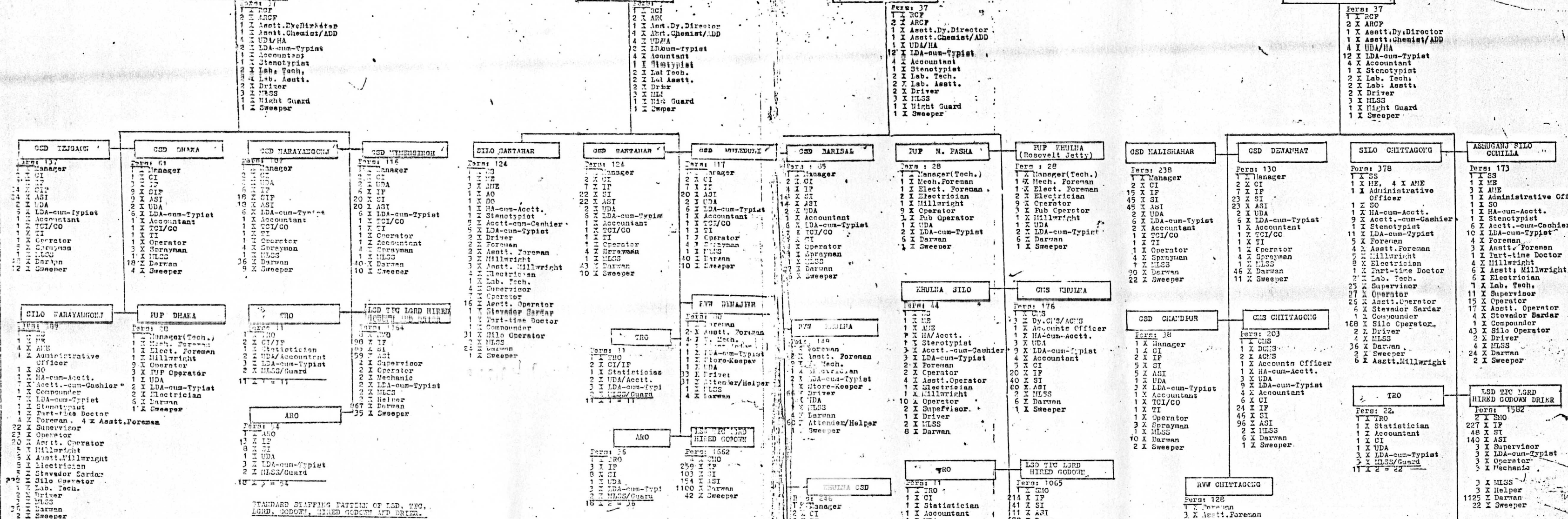


NJ FOOD DHAKA 2358

RC FOOD RAJSHAHI 2255

RC FOOD KHULNA 2128

RC FOOD CHITTAGONG 3101



STANDARD STAFFING PATTERNS OF LOD, TRO, LRD, GCD, HIRSD, HIRSD GCD, AND DRIDER.

EILA (66) 2650

- For 26 Eilas
- 1 X Manager
- 1 X Asst. Chemist
- 1 X Asst. Typist
- 1 X Asst. Operator
- 1 X Asst. Driver
- 1 X Asst. Night Guard
- 1 X Asst. Sweeper

For 24 Eilas

- 1 X Manager
- 1 X Asst. Chemist
- 1 X Asst. Typist
- 1 X Asst. Operator
- 1 X Asst. Driver
- 1 X Asst. Night Guard
- 1 X Asst. Sweeper

For 19 Eilas

- 1 X Manager
- 1 X Asst. Chemist
- 1 X Asst. Typist
- 1 X Asst. Operator
- 1 X Asst. Driver
- 1 X Asst. Night Guard
- 1 X Asst. Sweeper

Upazila (460)

- 1 X Asst. Chemist
- 1 X Asst. Typist
- 1 X Asst. Operator
- 1 X Asst. Driver
- 1 X Asst. Night Guard
- 1 X Asst. Sweeper

EILAS

All Eilas will have the following addl. Staff (EXCEPT HIRSD, KHULNA, DHAKA and CHITTAGONG) these have been provided with Regional Workshop. No such staff provided for Kusarban ZCF Office also.

TTL

- 1 X Manager
- 1 X Asst. Chemist
- 1 X Asst. Typist
- 1 X Asst. Operator
- 1 X Asst. Driver
- 1 X Asst. Night Guard
- 1 X Asst. Sweeper

LSD - I

(Capacity above 5000 tons
15 Nos. Total Godown 201)

- 1 X TRO
- 1 X SI (for 6 Godowns)
- 1 X ASI (for 2 Godowns)
- 1 X ASI (for 2 Godowns)
- 1 X ASI (for each Godown)
- 2 X Sweeper (for each LSD)

LSD - II

(Capacity 2000-5000
Total Nos. 99
Godowns: 500
Wrgs: 12 for each)

- 1 X TRO
- 1 X SI (for 2 Godowns)
- 1 X ASI (for 2 Godowns)
- 1 X ASI (for each Godown)
- 1 X Sweeper

LSD - III

(Below 2000 tons
capacity: Total Nos. 375
Godowns 257
Wrgs: 5 for each)

- 1 X TRO
- 1 X ASI
- 3 X Darwan

SUMMARY OF MANPOWER

CLASS	NO. OF STAFF	NO. OF STAFF	NO. OF STAFF
Director General	1	1	1
Asst. Director General	1	1	1
Chief Miller	5	5	6
Asst. Chief Miller	1	1	1
Asst. Director/Asst. Dir. Director Silo	1	1	7
C.S.D.R.	1	1	1
R.C. Food	4	4	4
S.C.F./C.M.S.	24	24	20
Silo Superintendent	5	5	5
B.R.O.P./D.D./Chemist	19	17	21
M.S./A.C.M.	5	5	5
B.D./A.P./Manager(Tech.)	21	7	22
S.C.F./A.P./Manager/H.C./Asstt. R.C.F./A.C./S.S.	97	88	96
Total Class-I	194	185	241
Class-II	84	55	54
Class-III	7495	6299	5595
Class-IV	6550	6156	6319
GRAND TOTAL	14,223	12,695	13,719

LSD GCD

(Total-175 Godowns)

- 1 X IP
- 2 X Darwan

HIRSD GCD

(Total-175 Godowns)

- 1 X IP
- 2 X Darwan for each
- DRIDER

DRIDER

Total: 5

- 1 X Supervisor
- 1 X Mechanic
- 1 X Operator
- 1 X Asst. Typist
- 1 X Asst. Driver
- 1 X Asst. Night Guard

DRIDER

LRD

(Capacity 2000-5000
Total Nos. 99
Godowns: 500
Wrgs: 12 for each)

- 1 X TRO
- 1 X SI (for 2 Godowns)
- 1 X ASI (for 2 Godowns)
- 1 X ASI (for each Godown)
- 1 X Sweeper

HIRSD GCD

(Total-175 Godowns)

- 1 X IP
- 2 X Darwan for each
- DRIDER

DRIDER

Total: 5

- 1 X Supervisor
- 1 X Mechanic
- 1 X Operator
- 1 X Asst. Typist
- 1 X Asst. Driver
- 1 X Asst. Night Guard

DRIDER

- AGM : Asst. Chief Miller
- AGM : Asst. Controller, Movement and Storage
- ADD : Asst. Deputy Director
- ADM : Asst. National Director Movement and Storage
- AME : Asst. National Maintenance Engineer
- ARO : Asst. Rationing Officer
- ASI : Asst. National Sub-Inspector
- CCDR : Chief Controller of Dhaka
- CI : Chief Inspector
- CM : Chief Miller
- CMS : Controller of Movement and Storage
- CO : Chief Operator
- CSD : Chief Storage Department
- DA : Director Administration
- DAP : Director Accounts and Finance
- DCMS : Deputy Controller of Movement and Storage
- DD : Deputy Director
- DTIS : Director Inspection and Technical Services
- DMSS : Director Movement, Storage and Distribution
- DP : Director Procurement

MSM

(Capacity 2000-5000
Total Nos. 99
Godowns: 500
Wrgs: 12 for each)

- 1 X TRO
- 1 X SI (for 2 Godowns)
- 1 X ASI (for 2 Godowns)
- 1 X ASI (for each Godown)
- 1 X Sweeper

HIRSD GCD

(Total-175 Godowns)

- 1 X IP
- 2 X Darwan for each
- DRIDER

DRIDER

Total: 5

- 1 X Supervisor
- 1 X Mechanic
- 1 X Operator
- 1 X Asst. Typist
- 1 X Asst. Driver
- 1 X Asst. Night Guard

DRIDER

- OSM : Director Supply, Distribution and Marketing
- PO : Executive Officer
- IP : Inspector of Food
- LGRD : Local Government and Rural Development
- LSD : Local Supply Depot
- ME : Maintenance Engineer
- RCP : Regional Controller of Food
- RHW : Regional Vehicle Workshop
- NOF : National Sub-Inspector of Food
- SI : Sub-Inspector
- SMO : Storage and Movement Officer
- SO : Security Officer
- SS : Silo Superintendent
- TGI : Technical Chief-Inspector
- TI : Technical Inspector
- TPC : Temporary Procurement Centre
- TRO : Town Rationing Officer
- UPFO : Upazila Food Officer
- WO : Wheat Officer
- ZCO : Zila Controller of Food

AUTHORISATION OF TRANSPORT, MAJOR OFFICE EQUIPMENT AND MISCELLANEOUS POINTS ETC.

- Transport: The Directorate General is authorized:
 - 6 X Car (1 for DG, 1 for ADD, 301 for 2 Directors and 1 for Chief Miller).
 - 33 X Jeep (21 for DCF + 4 for RCF + 5 for Silo Superz + 2 for CHS + 1 for CDDR)
 - 10 X Microbus (4 for DG Office + 3 for Silos + 3 for CHS Office)
 - 200 X Trucks (50 for each of Khulna and Chittagong, 40 for each Dhaka and Dinajpur).
- The remaining transports will be handed over to the Government Transport Pool.
- Private use of transports will be as per Government Instructions issued from time to time.
- Air-Conditioners/Coolers: The Department is authorized:
 - 15 X Air-Conditioner
- Office Equipment: The Department is authorized:
 - 3 X Plain Paper Copier
 - 57 X Duplicating Machine
 - 778 X Type-writer.

CHAIRMAN, MARTIAL LAW COMMITTEE
ON ORGANISATIONAL SET-UP OF
MINISTRIES/DIVISIONS AND DEPARTMENTS