



# Weekly Report on JU-DNCC Mosquitoes Surveillance Program

Week 095 (March 13-17, 2026)

## Submitted To

Chief Health officer  
Dhaka North City Corporation  
Dhaka, Bangladesh

## Submitted By

IRES  
Department of Zoology  
Jahangirnagar University



**IRES**

## JU-DNCC Collaboration Center

Department of Zoology  
Jahangirnagar University  
Email: [ires@juniv.edu](mailto:ires@juniv.edu)  
Phone: +8801903307125

## Weekly Report on Mosquitoes Surveillance Program at DNCC

### Methods:

In the DNCC (Dhaka North City Corporation) area, mosquito surveillance is conducted across 5 zones. Adult mosquito surveillance involves setting up three types of traps in each zone to capture adult mosquitoes. Simultaneously, larval surveillance entails surveying an area within a 0.5-kilometer radius around traps location to inspect and collect mosquitoes' larvae from potential breeding sites.

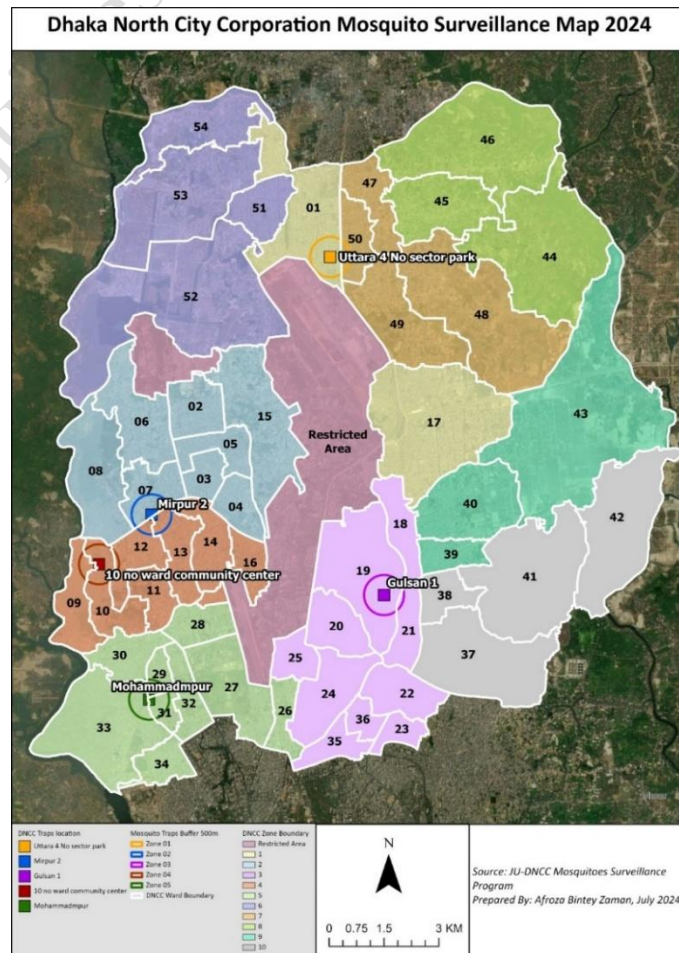
Zone	Traps Location	GPS Location
01	Uttara-4 No sector park	23.8613672,90.4035528
02	Mirpur-2, Vander office, DNCC	23.8036248,90.3601995
03	Gulsan 1, Purantan Vander office	23.7860557,90.4164024
04	10 No ward community center, Mirpur-1	23.7922967,90.3467992
05	Mohammadpur regional office of DNCC	23.7618721,90.3590884

For the Adult mosquito collection

1. Light trap
2. Gravid trap

For the mosquito larvae collection

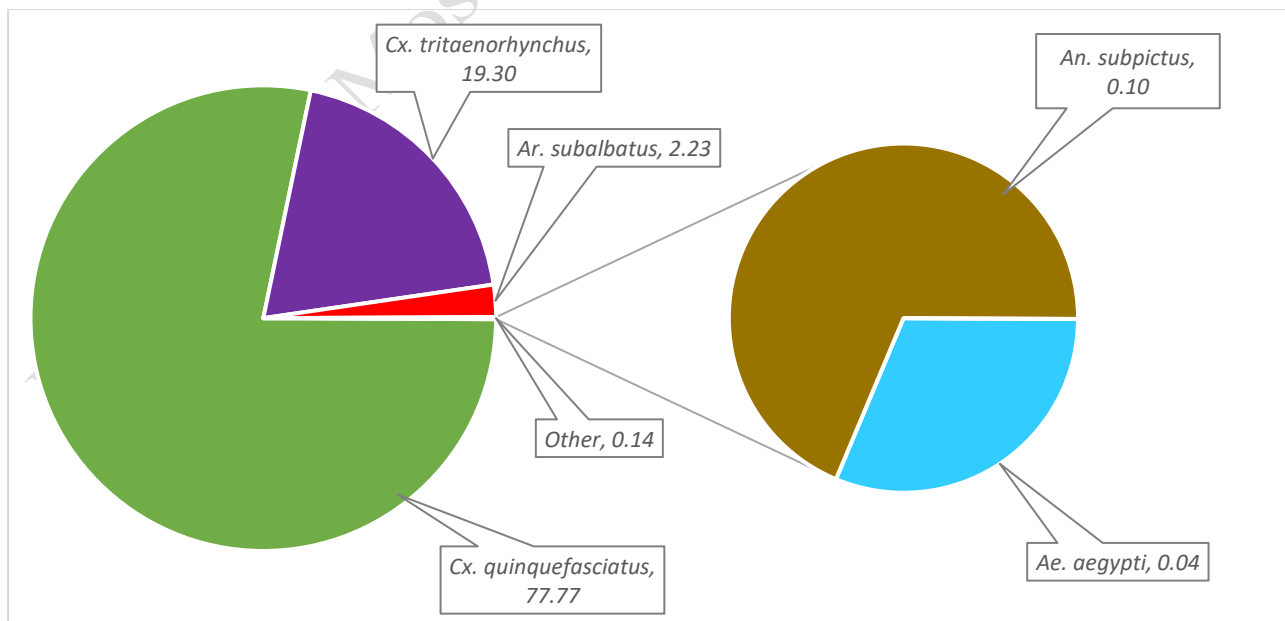
1. Aedes X smart trap
2. Directly collection larvae from field.



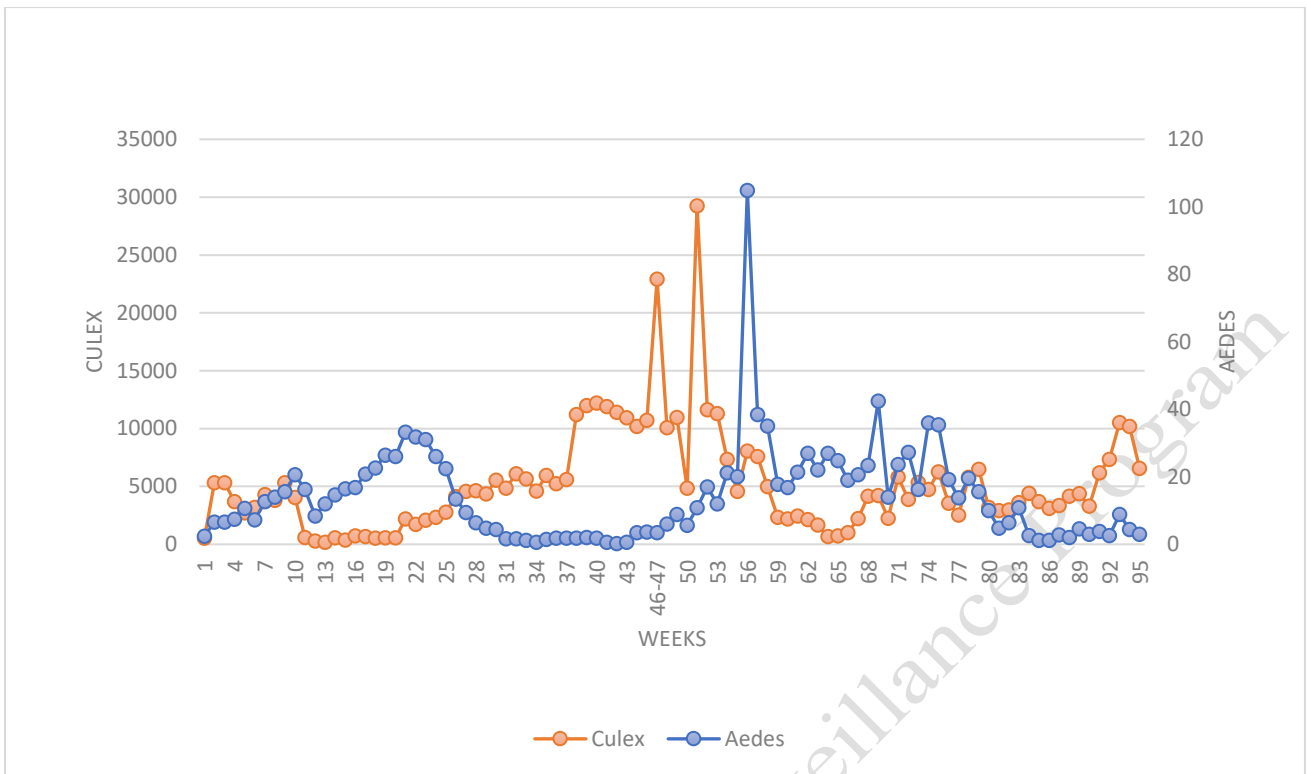
**Results:**

**Table 1. Collected Adult Mosquitoes from Moshar Machine (CO<sub>2</sub>) traps in Week 95 (March 13-17, 2026)**

Zone	N	<i>Ae. aegypti</i>	<i>Cx. quinquefasciatus</i>	<i>Cx. tritaeniorhynchus</i>	<i>Ar. subalbatus</i>	<i>An. vagys</i>	<i>An. subpictus</i>	<i>An. annularis</i>
1	18857	0	14072	4133	464	78	31	79
2	1631	2	1224	216	175	7	0	7
3	5225	9	4468	668	71	0	0	9
4	4967	1	4018	942	2	4	0	0
5	3089	3	2480	560	40	4	2	0
<b>Total</b>	33769	15	26262	6519	752	93	33	95
<b>%</b>	100.00	0.04	77.77	19.30	2.23	0.28	0.10	0.28



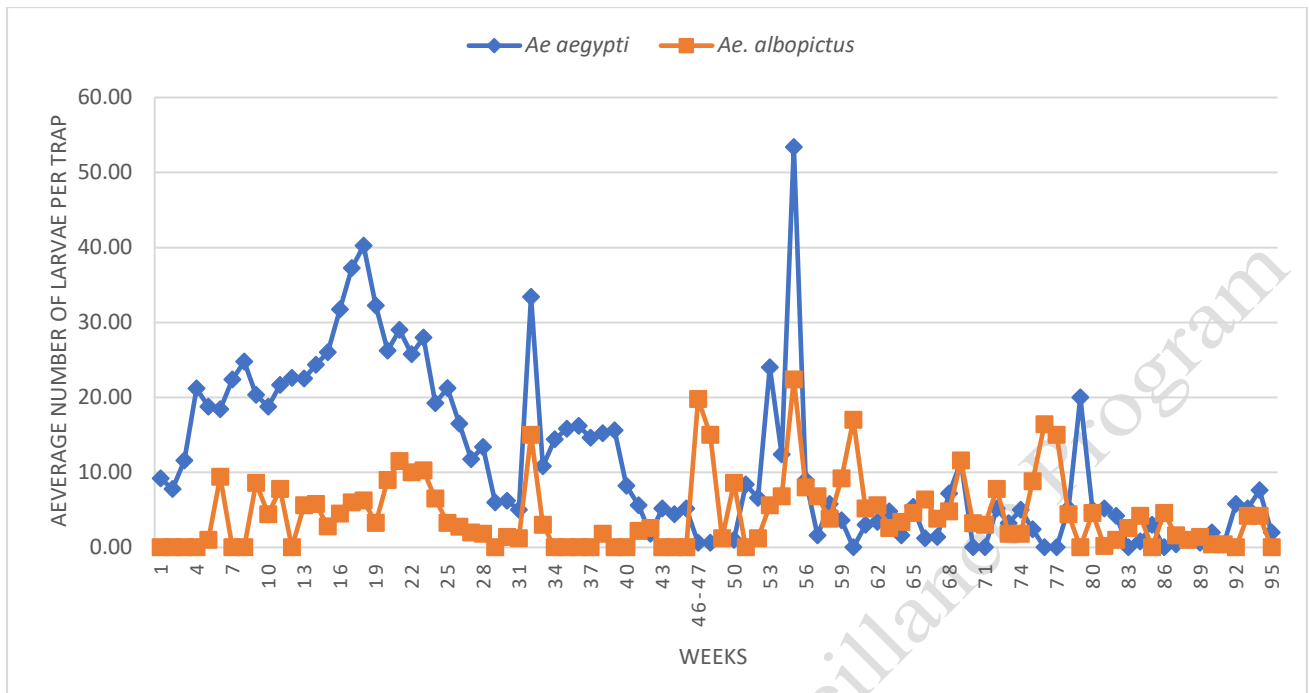
**Fig. 1: Percentage of Adult Mosquitoes Collected by Moshar Machine (CO<sub>2</sub>) traps in Week 95 (March 13-17, 2026)**



**Fig 2: Average number of mosquitoes per Moshar Machine (CO<sub>2</sub>) traps from Week 1 to Week 95 (May 2, 2024 - March 17, 2026)**

**Table 2. Collected Mosquito Larvae from *Aedes* X smart Traps in Week 95 (March 13-17, 2026)**

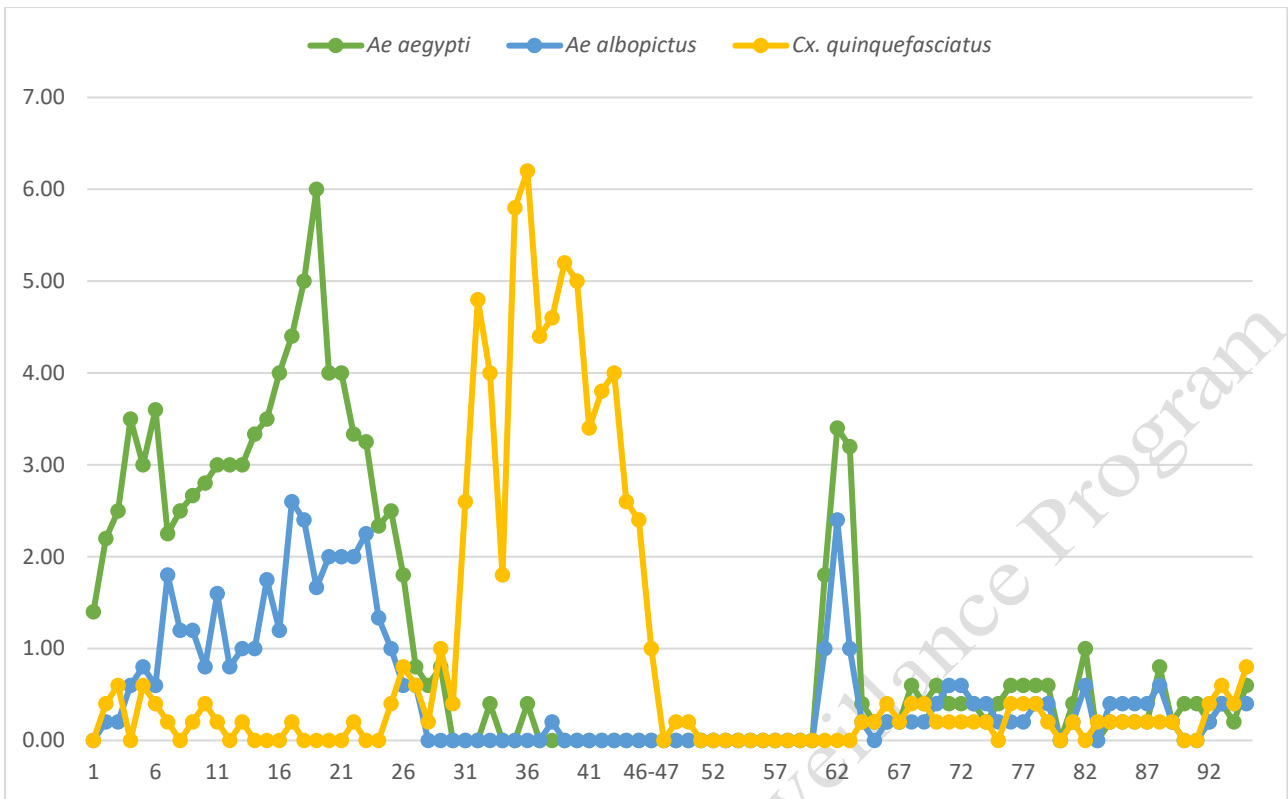
Zone	N	<i>Ae. aegypti</i>	<i>Ae. albopictus</i>
1	0	0	0
2	3	3	0
3	4	4	0
4	0	0	0
5	3	3	0
<b>Total</b>	10	10	0
<b>(%)</b>	100	100.00	0.00



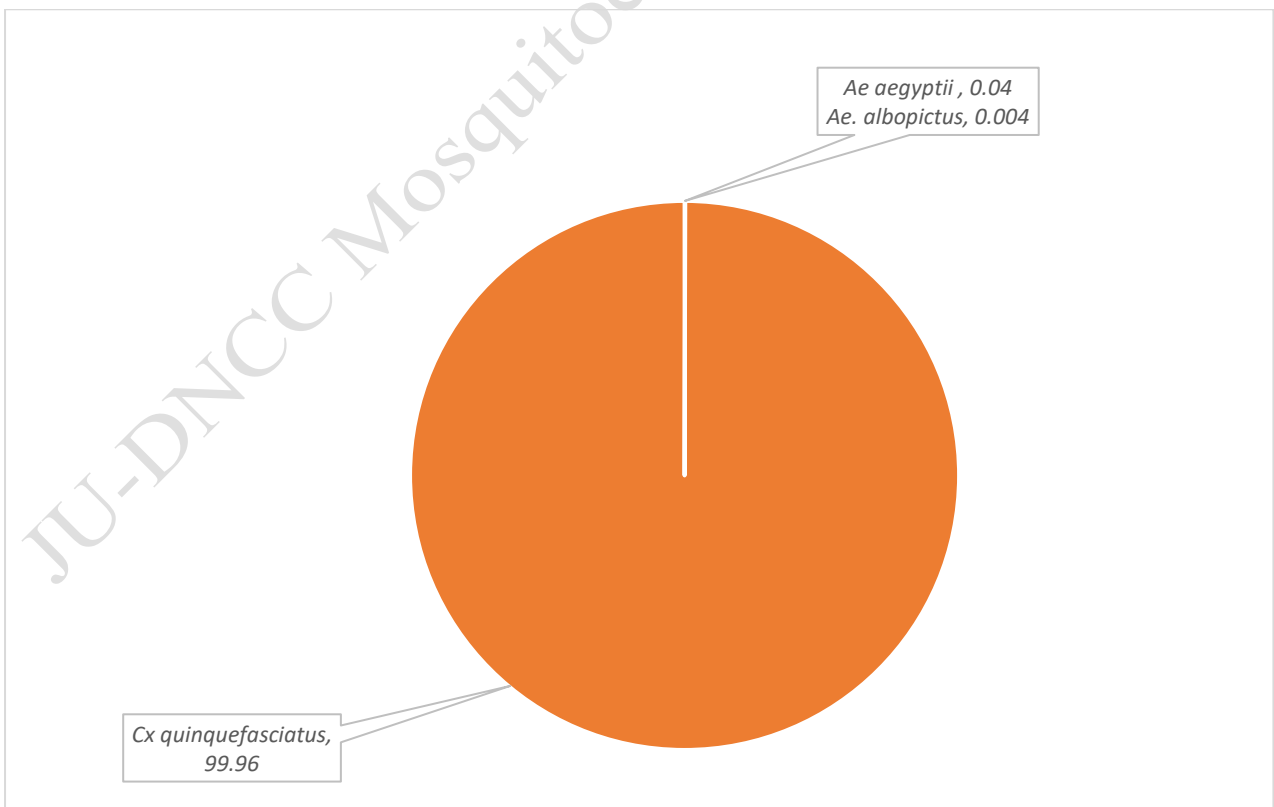
**Fig 3: Average Number of Aedes Larvae per Aedes X Smart Trap in Zones 1-5 from Week 1 to Week 95 (May 2, 2024 - March 17, 2026)**

**Table 3. Collected Adult Mosquitoes from Gravid Trap in Week 95 (March 13-17, 2026)**

Zone	Number of Mosquitoes	<i>Ae. aegypti</i>	<i>Ae. albopictus</i>	<i>Cx. quinquefasciatus</i>
1	2	1	0	1
2	2	0	1	1
3	3	2	0	1
4	0	0	0	0
5	2	0	1	1
<b>Total</b>	<b>9</b>	<b>3</b>	<b>2</b>	<b>4</b>
<b>(%)</b>	<b>100</b>	<b>33.33</b>	<b>22.22</b>	<b>44.44</b>



**Fig 4: Average number of adult mosquitoes per Gravid trap in zones 1-5 from Week 1 to Week 95 (May 2, 2024 - March 17, 2026)**

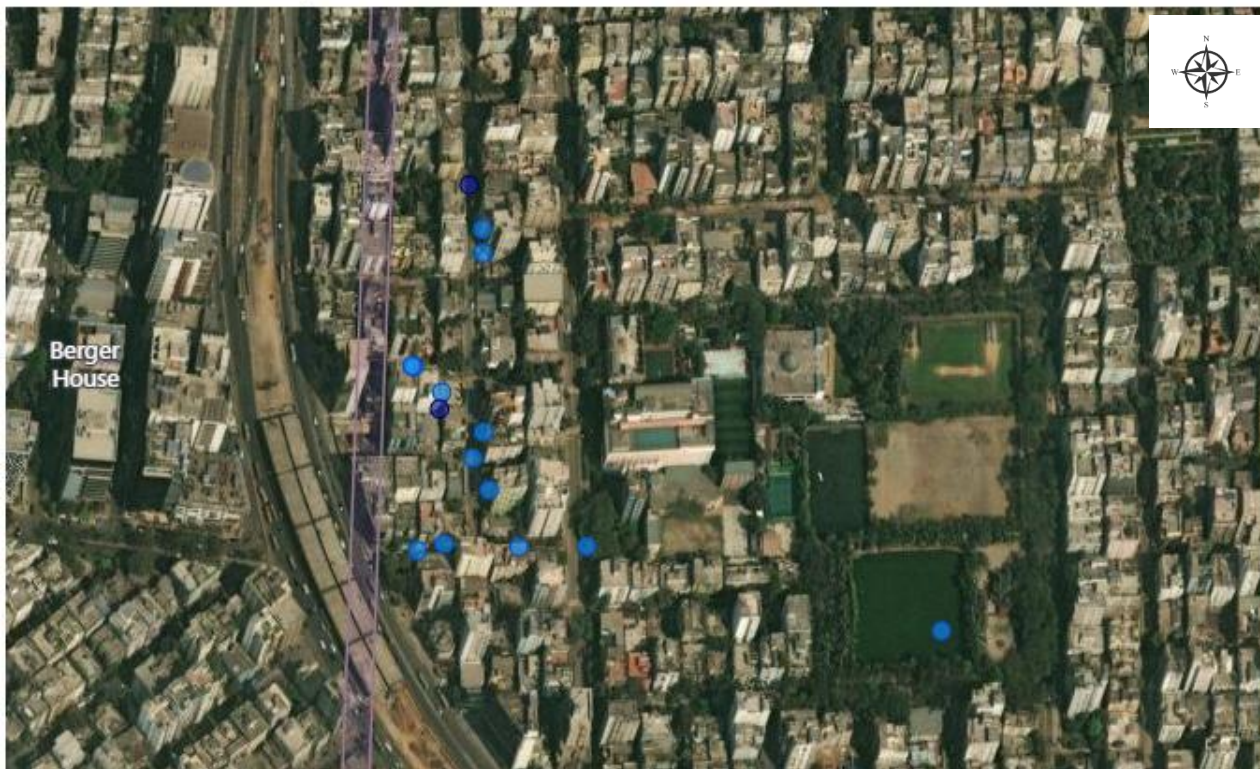


**Fig. 5: Percentage of Mosquito Larvae from Zones (1-5) in Week 95 (March 13-17, 2026)**

**Table 4. Positive Larval Spots in Different Zones (1-5) with Estimated Number of Larvae in Week 95 (March 13-17, 2026)**

Zone	GPS Location	<i>Ae. aegypti</i>	<i>Ae. albopictus</i>	<i>Cx. quinquefasciatus</i>	Source
1	23.8614994 90.4009453	0	0	32	Other
	23.8626723 90.4011149	0	0	58	Other
	<b>Total</b>	<b>0</b>	<b>0</b>	<b>90</b>	
3	23.7857264 90.4166444	0	0	547	Drain
	23.7857209 90.4166613	0	0	2548	Drain
	23.7851113 90.4191052	245	0	0	Flower tub & tray Other
	23.7851772 90.421593	0	0	1245874	Lake
	<b>Total</b>	<b>245</b>	<b>0</b>	<b>1248969</b>	
4	23.7894567 90.3448537	0	54	0	Plastic Mug/pot/Bodna
	<b>Total</b>	<b>0</b>	<b>54</b>	<b>0</b>	
5	23.7597443 90.3619126	254	0	0	Water tank (Cement)
	<b>Total</b>	<b>254</b>	<b>0</b>	<b>0</b>	
<b>Grand Total</b>		<b>499</b>	<b>54</b>	<b>1249059</b>	

Household Positive ● Negative ● Positive



Map 1: Positive and Negative House of Uttara 4 No. Sector at Weeks 95

Household Positive ● Negative



Map 2: Positive and Negative House of Mirpur 2 at Weeks 95

Household Positive ● Negative ● Positive



Map 3: Positive and Negative House of Gulsan 1 at Weeks 95

Household Positive ● Negative ● Positive



Map 4: Positive and Negative House of Mirpur 1 at Weeks 95

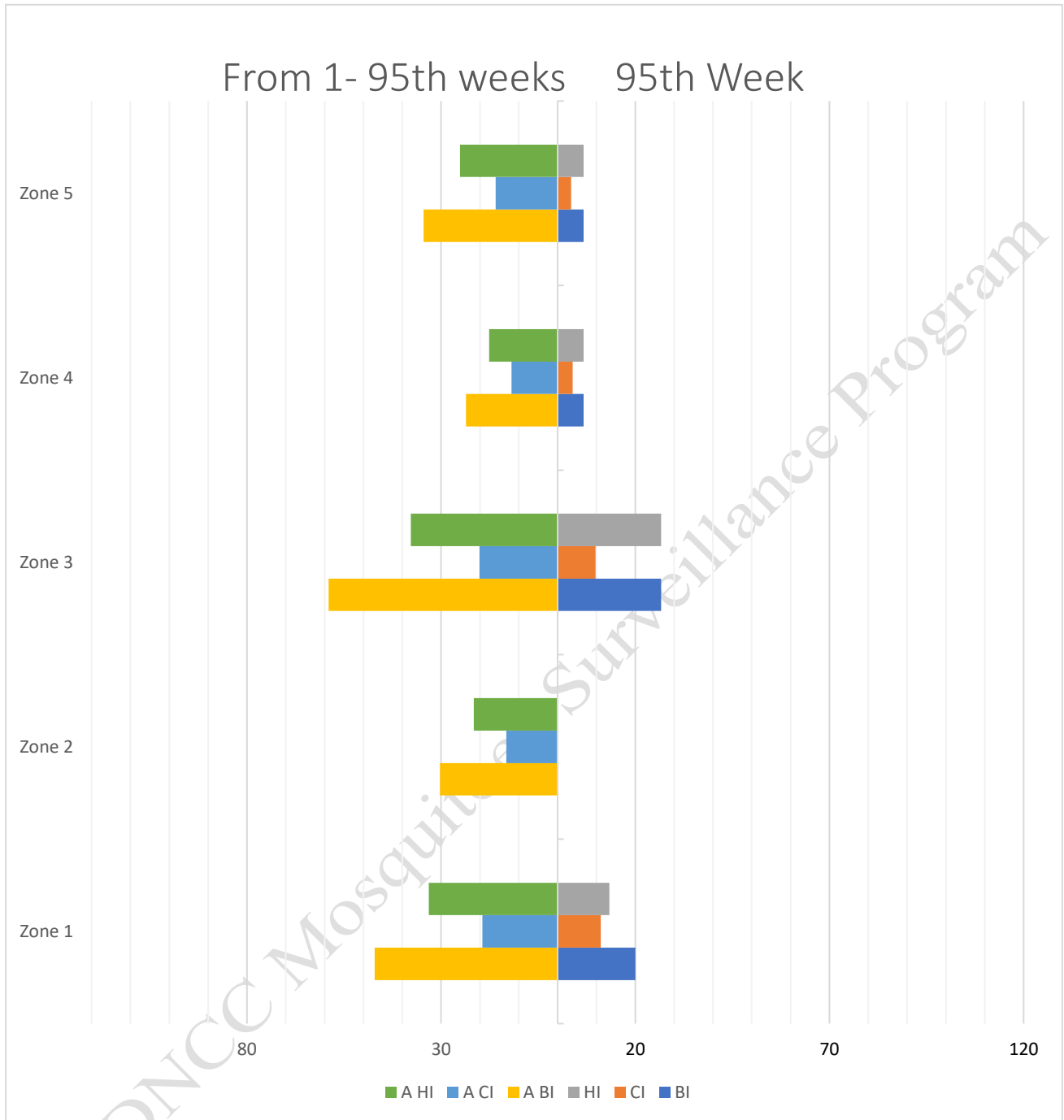
Household Positive ● Negative ● Positive



**Map 5: Positive and Negative House of Mohammadpur at Weeks 95**

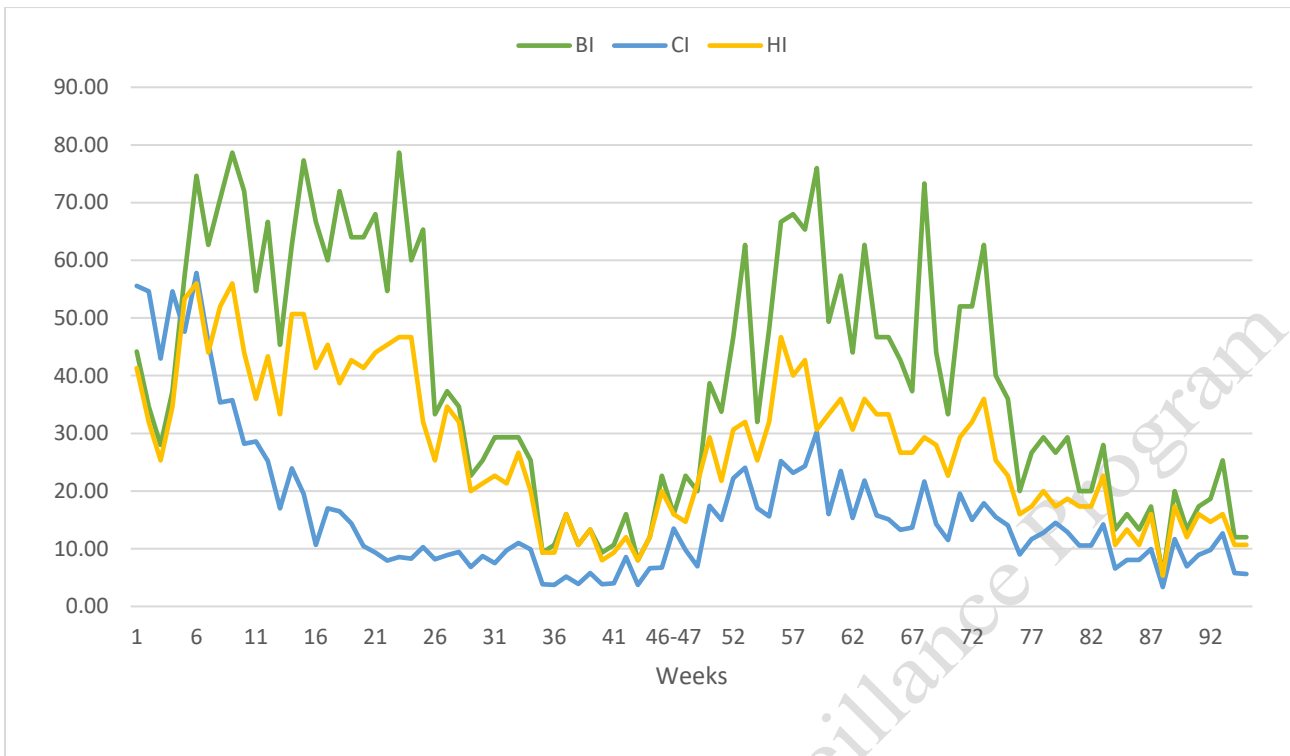
**Table 5: Positive House, Wet Container, BI, CI and HI in Zones (1-5) in Week 95 (March 13-17, 2026)**

Zone	Total House	Positive House	Total Wet container	Positive Wet Container	BI	CI	HI
1	15	2	27	3	20.00	11.11	13.33
2	15	0	23	0	0.00	0.00	0.00
3	15	4	41	4	26.67	9.76	26.67
4	15	1	26	1	6.67	3.85	6.67
5	15	1	29	1	6.67	3.45	6.67

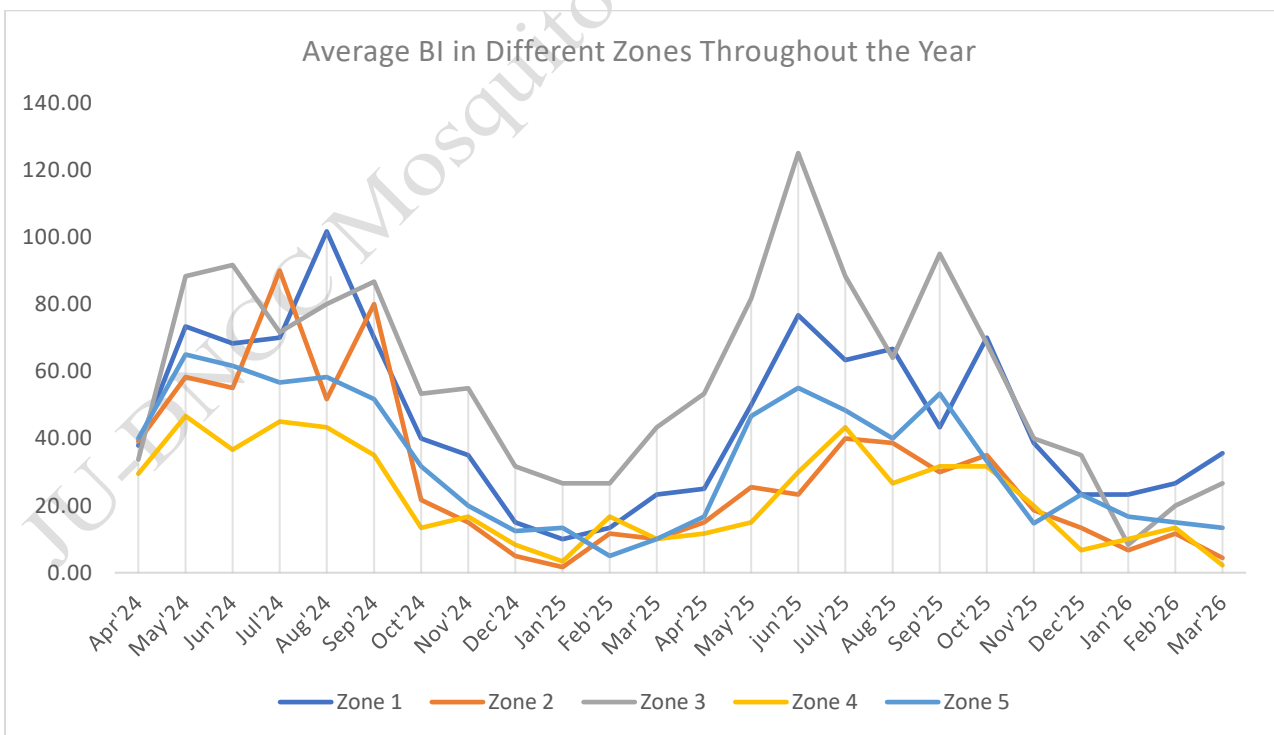


**Fig. 6: BI, CI and HI in Different Zones (1-5) of Dhaka north City Corporation**

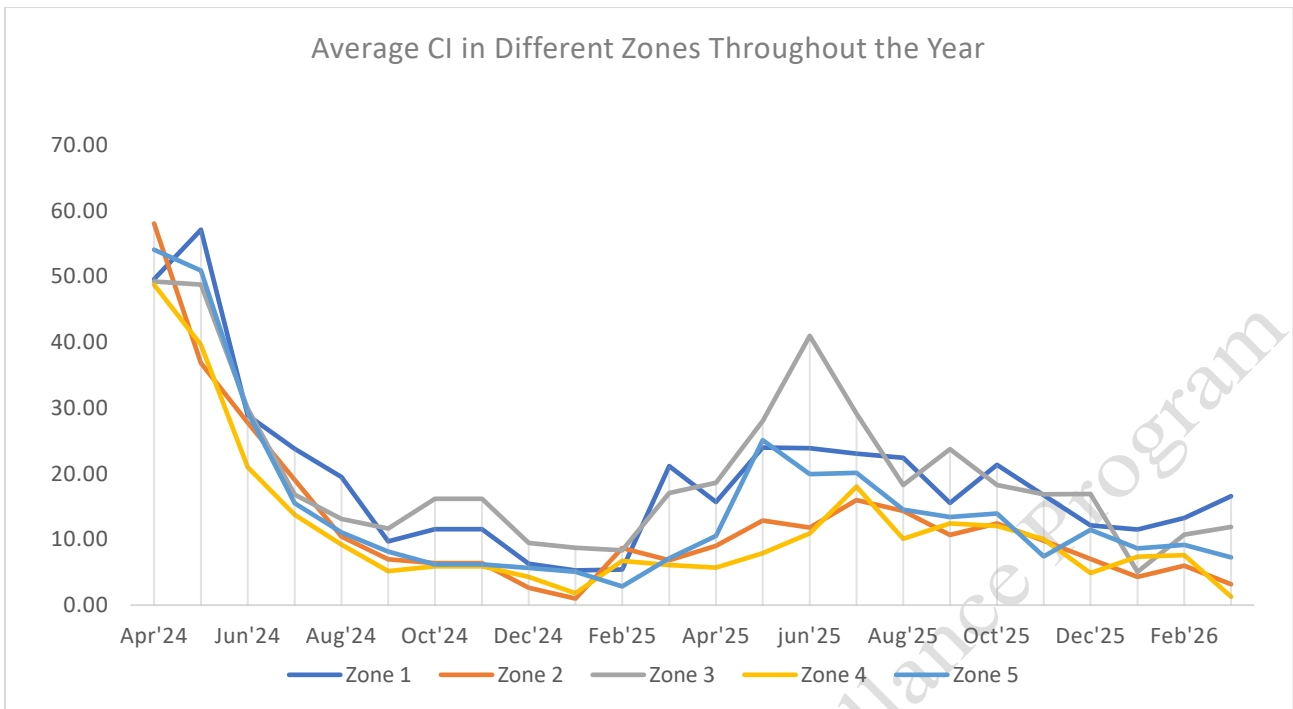
**\*NB: "A" stands for Average from 1<sup>st</sup> week.**



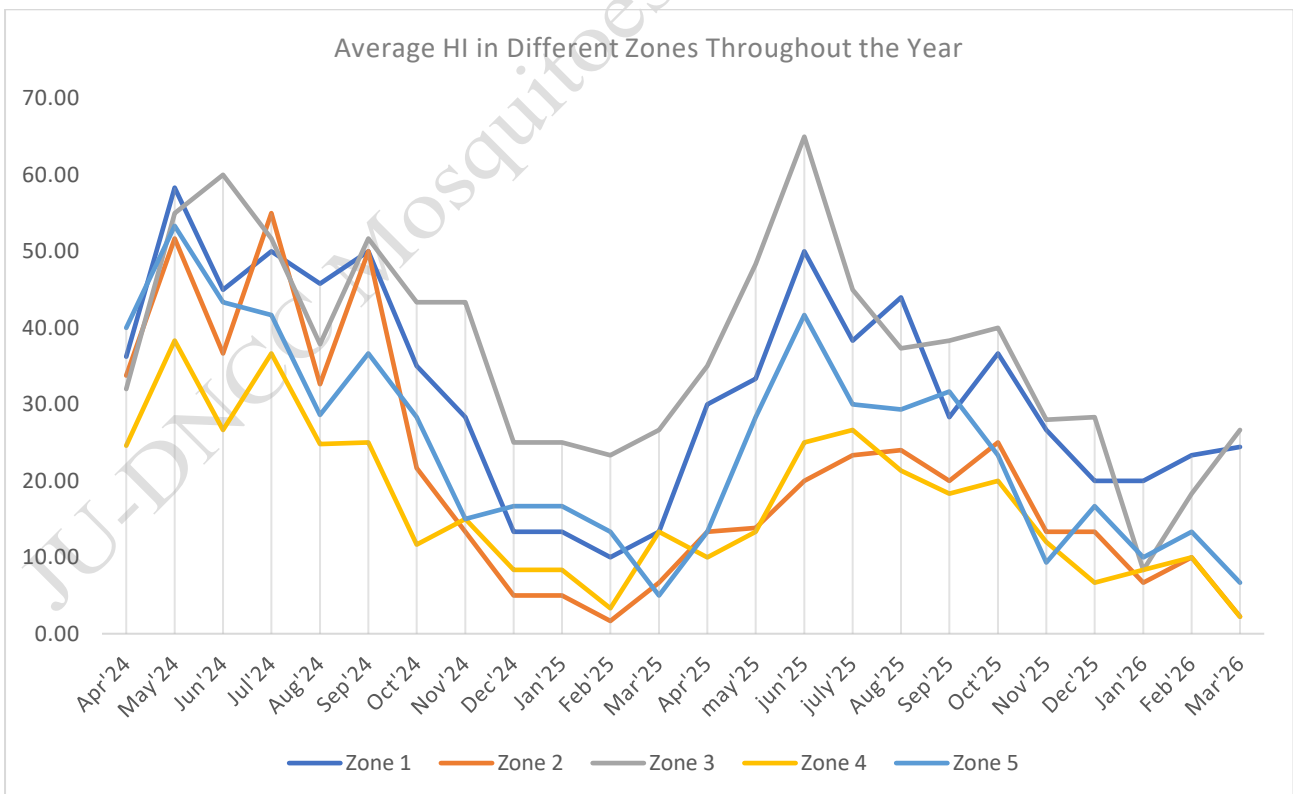
**Fig 7: Mosquitoes population fluctuation (BI, CI, HI) from Week 1 to Week 95 (May 2, 2024 - March 17, 2026)**



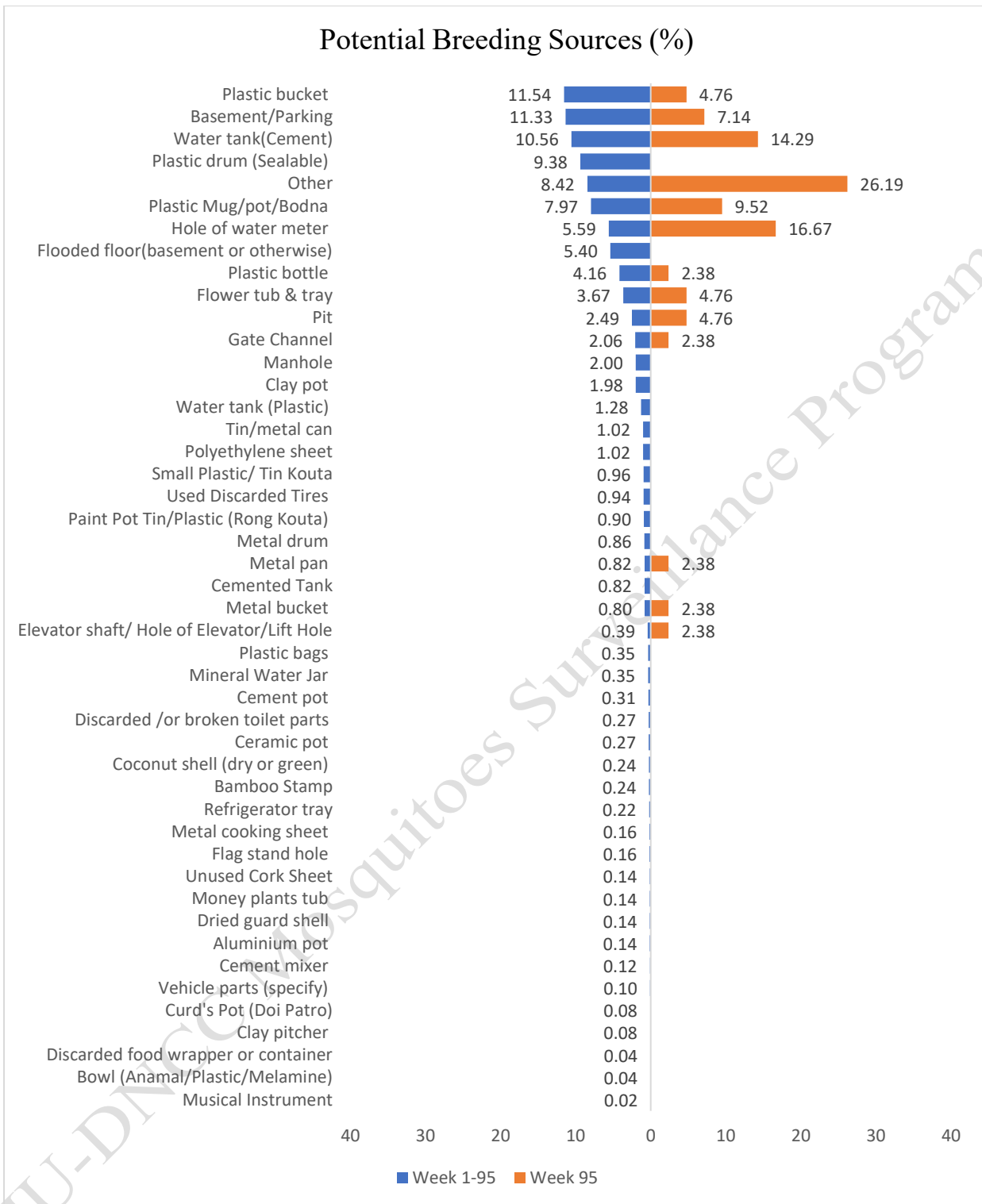
**Fig. 8: Breteau Index (BI) in Different Zones from Week 1 to Week 95 (May 2, 2024 - March 17, 2026)**



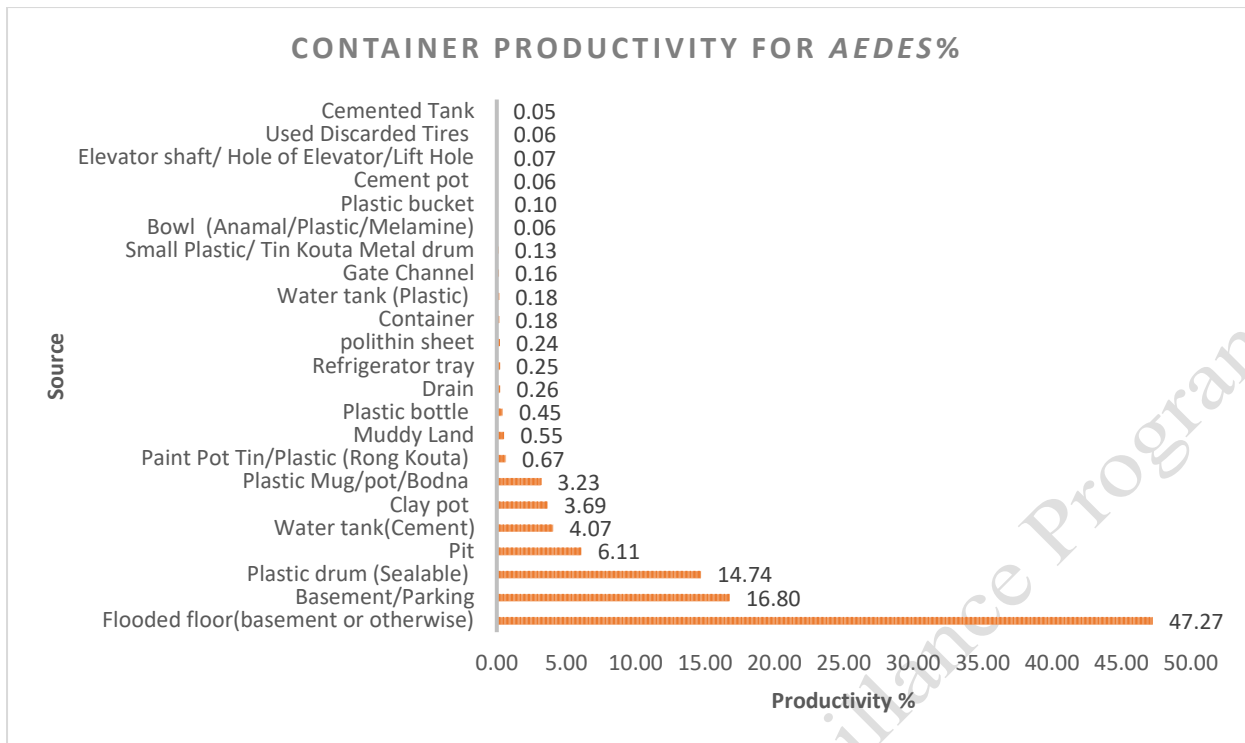
**Fig. 9: Container Index (CI) in Different Zones from Week 1 to Week 95 (May 2, 2024 - March 17, 2026)**



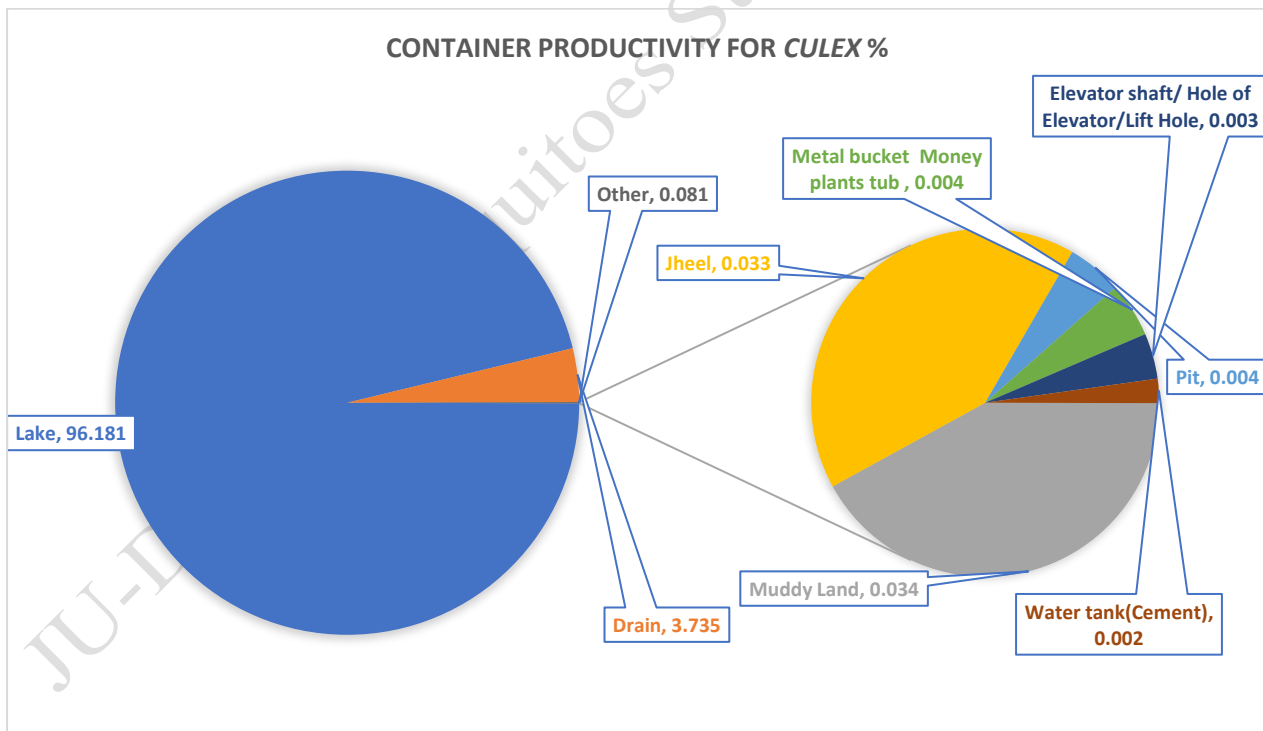
**Fig. 10: House Index (HI) in Different Zones from Week 1 to Week 95 (May 2, 2024 - March 17, 2026)**



**Fig. 11: Container Frequency for *Aedes* mosquitoes in Zones (1-5)**



**Fig. 12: Container Productivity of *Aedes* mosquito in DNCC from Week 1 to Week 95 (May 2, 2024 - March 17, 2026)**



**Fig. 13: Container Productivity of *Culex* mosquito in DNCC, from Week 1 to Week 95 (May 2, 2024 - March 17, 2026)**

**Table 6: Container Frequency & Probable potential Wet Container in zones (1-5) from Week 1 to Week 95 (May 2, 2024 - March 17, 2026)**

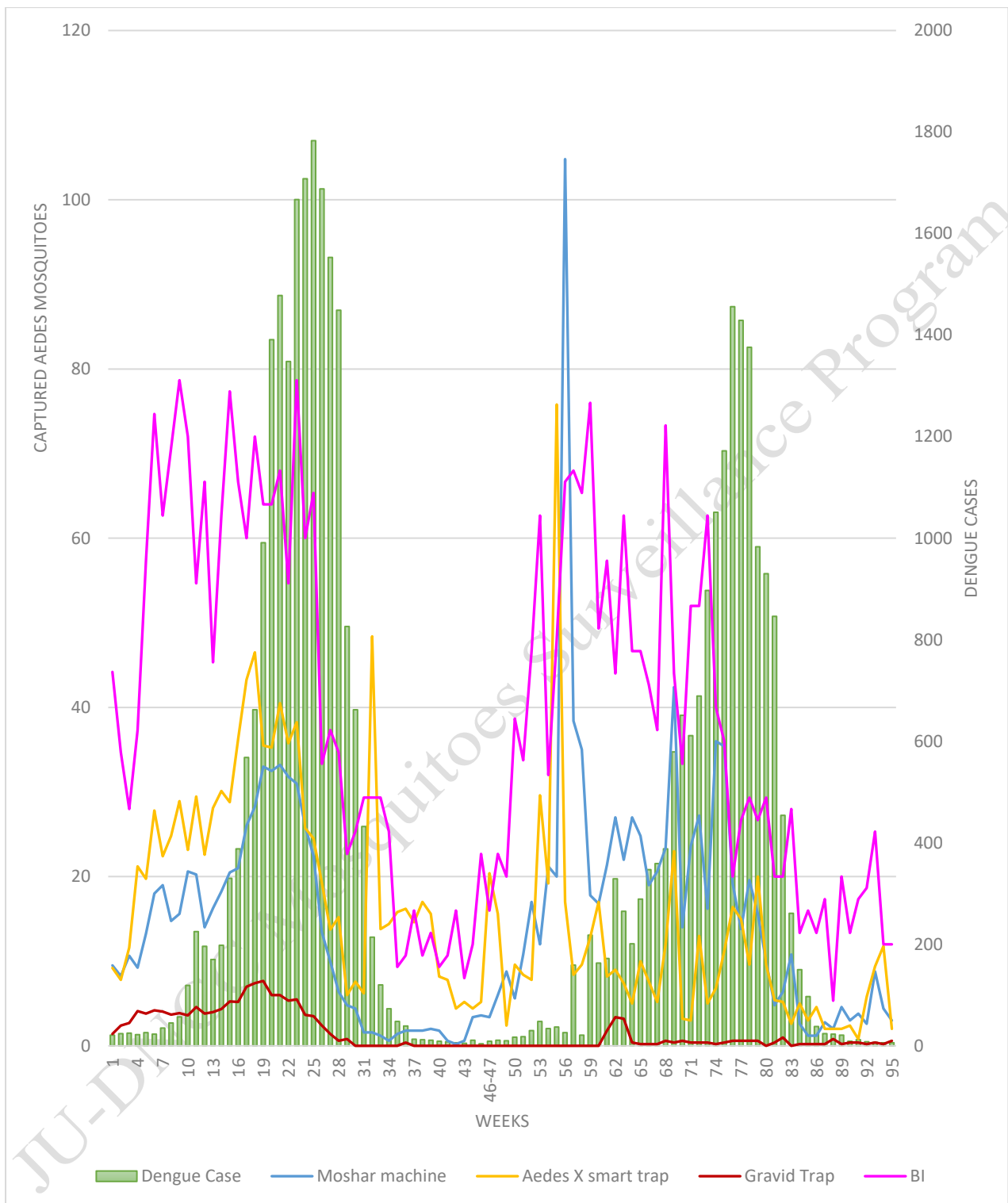
Sources	+House	-WC	+WC	Total WC	% WC	% PWC
Plastic bucket	195	261	327	588	11.54	6.42
Basement/Parking	209	41	536	577	11.33	10.52
Water tank(Cement)	165	252	286	538	10.56	5.61
Plastic drum (Sealable)	226	78	400	478	9.38	7.85
Other	205	128	301	429	8.42	5.91
Plastic Mug/pot/Bodna	166	82	324	406	7.97	6.36
Hole of water meter	54	6	279	285	5.59	5.48
Flooded floor(basement or otherwise)	128	138	137	275	5.40	2.69
Plastic bottle	80	63	149	212	4.16	2.93
Flower tub & tray	67	25	162	187	3.67	3.18
Pit	61	22	105	127	2.49	2.06
Gate Channel	31	33	72	105	2.06	1.41
Manhole	55	29	73	102	2.00	1.43
Clay pot	83	11	90	101	1.98	1.77
Water tank (Plastic)	20	28	37	65	1.28	0.73
Polyethylene sheet	33	3	49	52	1.02	0.96
Tin/metal can	30	0	52	52	1.02	1.02
Small Plastic/ Tin Kouta	24	9	40	49	0.96	0.79
Used Discarded Tires	28	16	32	48	0.94	0.63
Paint Pot Tin/Plastic (Rong Kouta)	30	5	41	46	0.90	0.80
Metal drum	17	7	37	44	0.86	0.73
Cemented Tank	22	13	29	42	0.82	0.57
Metal pan	17	3	39	42	0.82	0.77
Metal bucket	20	5	36	41	0.80	0.71
Elevator shaft/ Hole of Elevator/Lift Hole	7	4	16	20	0.39	0.31
Mineral Water Jar	6	4	14	18	0.35	0.27
Plastic bags	8	1	17	18	0.35	0.33
Cement pot	11	1	15	16	0.31	0.29
Ceramic pot	13	0	14	14	0.27	0.27
Discarded /or broken toilet parts	11	2	12	14	0.27	0.24
Bamboo Stamp	9	0	12	12	0.24	0.24
Coconut shell (dry or green)	4	0	12	12	0.24	0.24
Refrigerator tray	8	0	11	11	0.22	0.22
Flag stand hole	4	1	7	8	0.16	0.14
Metal cooking sheet	2	0	8	8	0.16	0.16
Aluminium pot	4	0	7	7	0.14	0.14
Dried guard shell	4	0	7	7	0.14	0.14
Money plants tub	5	0	7	7	0.14	0.14
Unused Cork Sheet	5	1	6	7	0.14	0.12
Cement mixer	2	0	6	6	0.12	0.12
Vehicle parts (specify)	3	1	4	5	0.10	0.08
Clay pitcher	3	1	3	4	0.08	0.06
Curd's Pot (Doi Patro)	3	0	4	4	0.08	0.08
Bowl (Anamal/Plastic/Melamine)	2	0	2	2	0.04	0.04
Discarded food wrapper or container	1	0	2	2	0.04	0.04
Musical Instrument	1	0	1	1	0.02	0.02



**Table 7: Percentage of breeding sources in different zone from Week 1 to Week 95 (May 2, 2024 - March 17, 2026)**

Containers	Percentage of Breeding Sources				
	Zone 01	Zone 02	Zone 03	Zone 04	Zone 05
Plastic bucket	2.00	2.04	2.24	2.91	2.36
Basement/Parking	2.81	1.73	2.94	1.14	2.71
Water tank(Cement)	1.33	1.71	1.39	3.06	3.06
Plastic drum (Sealable)	1.39	2.24	1.61	2.20	1.94
Other	2.75	1.47	2.32	0.73	1.16
Plastic Mug/pot/Bodna	1.45	1.43	1.51	2.26	1.32
Hole of water meter	0.69	1.12	0.26	1.77	1.77
Flooded floor(basement or otherwise)	1.39	1.20	0.90	0.59	1.32
Plastic bottle	0.55	0.96	0.59	1.10	0.96
Flower tub & tray	1.08	0.61	1.24	0.45	0.29
Pit	0.63	0.33	0.84	0.33	0.35
Gate Channel	0.75	0.20	0.61	0.08	0.43
Manhole	0.82	0.24	0.63	0.22	0.10
Clay pot	0.24	0.41	0.61	0.24	0.49
Water tank (Plastic)	0.00	0.80	0.18	0.16	0.14
Polyethylene sheet	0.29	0.27	0.20	0.18	0.08
Tin/metal can	0.29	0.27	0.20	0.20	0.06
Small Plastic/ Tin Kouta	0.26	0.18	0.27	0.12	0.14
Used Discarded Tires	0.35	0.26	0.18	0.08	0.08
Paint Pot Tin/Plastic (Rong Kouta)	0.22	0.10	0.27	0.20	0.12
Metal drum	0.16	0.10	0.22	0.29	0.10
Cemented Tank	0.16	0.12	0.20	0.24	0.12
Metal pan	0.18	0.14	0.27	0.10	0.14
Metal bucket	0.12	0.08	0.24	0.22	0.16
Elevator shaft/ Hole of Elevator/Lift Hole	0.16	0.10	0.08	0.00	0.06
Mineral Water Jar	0.04	0.02	0.06	0.16	0.08
Plastic bags	0.04	0.02	0.08	0.12	0.10
Cement pot	0.04	0.00	0.12	0.02	0.14
Ceramic pot	0.06	0.02	0.06	0.02	0.12
Discarded /or broken toilet parts	0.02	0.14	0.04	0.00	0.08
Bamboo Stamp	0.06	0.08	0.04	0.06	0.00
Coconut shell (dry or green)	0.06	0.04	0.06	0.04	0.04
Refrigerator tray	0.08	0.02	0.06	0.04	0.02
Flag stand hole	0.08	0.02	0.02	0.00	0.04
Metal cooking sheet	0.00	0.02	0.06	0.04	0.04
Aluminium pot	0.02	0.04	0.00	0.06	0.02
Dried guard shell	0.04	0.00	0.08	0.00	0.02
Money plants tub	0.06	0.04	0.04	0.00	0.00
Unused Cork Sheet	0.00	0.02	0.04	0.02	0.06
Cement mixer	0.00	0.04	0.04	0.02	0.02
Vehicle parts (specify)	0.02	0.00	0.06	0.02	0.00
Clay pitcher	0.04	0.00	0.02	0.02	0.00
Curd's Pot (Doi Patro)	0.02	0.02	0.04	0.00	0.00
Bowl (Anamal/Plastic/Melamine)	0.02	0.02	0.00	0.00	0.00
Discarded food wrapper or container	0.00	0.00	0.04	0.00	0.00
Musical Instrument	0.02	0.00	0.00	0.00	0.00





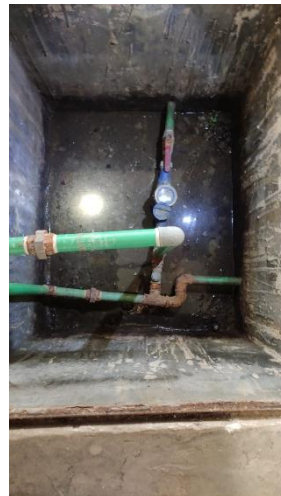
**Fig. 14: Correlation between Dengue Cases and *Aedes* Mosquitoes Captured by per Moshar Machine CO<sub>2</sub> traps, Aedes X smart traps, and Gravid traps**

**NB: DNCC dengue cases only**

### Photographs of Mosquitoes Surveillance



### Samples Collection from Field



### Samples Processing and Identification



**Comments:**

Overall mosquito density is decreasing and the dengue cases declining rapidly. The Breteau Index (BI) is constant (non-increasing and non-decreasing). It is time for taking precaution and preparation for higher mosquito control. Moreover, this highlights the importance of continued surveillance to uncover hidden risks and to guide timely interventions.

**For Aedes Mosquito Control**

- Aedes mosquito density varies across locations, with notable breeding found in plastic drums, buckets, flooded basements, and water tanks, as seen in larval and trap data.
- Continuous surveillance is essential to monitor trends and target control interventions effectively.
- Frequent cleaning and management of water-holding containers (e.g., pots, bottles, plastic drums, and construction site debris) are vital.
- Permanent breeding habitats should be managed with larvicides or Insect Growth Regulators (IGRs) for sustained control.
- Construction sites must be regularly inspected and treated due to their high potential for breeding.

**For Other Mosquito Control**

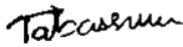
- Drainage systems should be kept flowing to prevent stagnant water accumulation.
- Canals, ponds, lakes, and muddy lowlands should be cleaned of waste, weeds, and organic matter.
- Septic tanks must be covered and regularly maintained.
- Emphasis should be placed on slum areas and waterlogged urban zones, which are significant breeding grounds for Culex mosquitoes.

**Public Awareness and Community Involvement**

- Launch targeted awareness campaigns, especially in vulnerable and high-risk areas.
- Encourage communities to eliminate standing water regularly.
- Promote participatory surveillance and control efforts, including homeowner engagement in larval source reduction.

**Copy sent for your information and further action (FYI/FA):**

1. CHO, Health Department, Dhaka North City Corporation
2. Secretary, Dhaka North City Corporation
3. PS to Administrator, Dhaka North City Corporation
4. Staff Officer of CEO, Dhaka North City Corporation
5. Office Copy



**(Tabassum Mostofa Mim)**  
**Entomologist**  
**IRES**  
**JU-DNCC Collaboration Center**



**(Prof. Dr. Kabirul Bashar)**  
**Focal person**  
**IRES**  
**JU-DNCC Collaboration Center**