



Weekly Report on JU-DNCC Mosquitoes Surveillance Program

Week 096 (March 27 - April 1, 2026)

Submitted To

Chief Health officer
Dhaka North City Corporation
Dhaka, Bangladesh

Submitted By

IRES
Department of Zoology
Jahangirnagar University



IRES

JU-DNCC Collaboration Center

Department of Zoology
Jahangirnagar University

Email: ires@juniv.edu

Phone: +8801903307125

Weekly Report on Mosquitoes Surveillance Program at DNCC

Methods:

In the DNCC (Dhaka North City Corporation) area, mosquito surveillance is conducted across 5 zones. Adult mosquito surveillance involves setting up three types of traps in each zone to capture adult mosquitoes. Simultaneously, larval surveillance entails surveying an area within a 0.5-kilometer radius around traps location to inspect and collect mosquitoes' larvae from potential breeding sites.

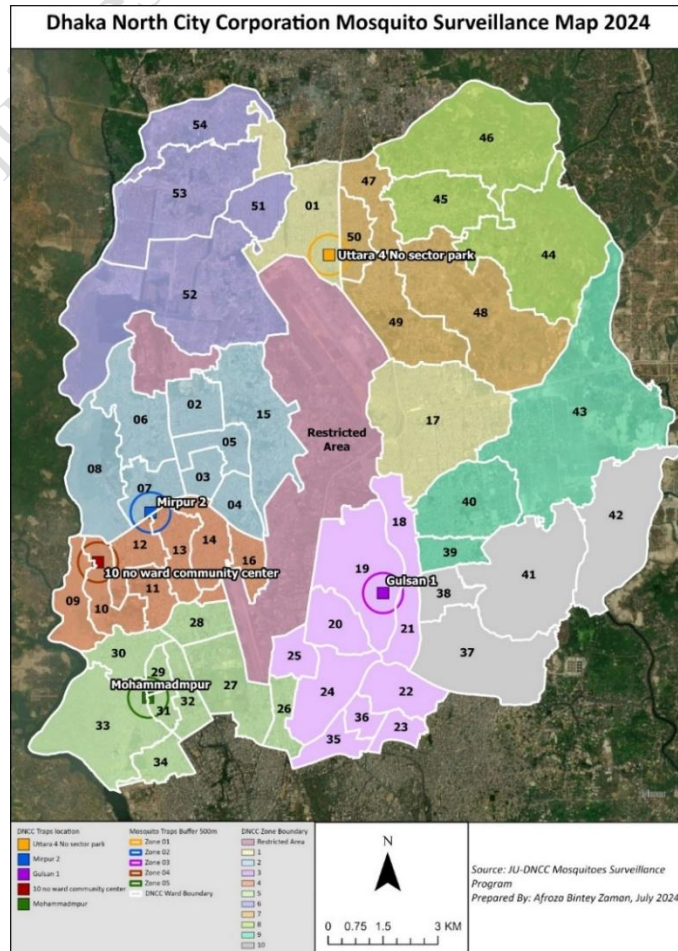
Zone	Traps Location	GPS Location
01	Uttara-4 No sector park	23.8613672,90.4035528
02	Mirpur-2, Vander office, DNCC	23.8036248,90.3601995
03	Gulsan 1, Purantan Vander office	23.7860557,90.4164024
04	10 No ward community center, Mirpur-1	23.7922967,90.3467992
05	Mohammadpur regional office of DNCC	23.7618721,90.3590884

For the Adult mosquito collection

1. Light trap
2. Gravid trap

For the mosquito larvae collection

1. Aedes X smart trap
2. Directly collection larvae from field.



Results:

Table 1. Collected Adult Mosquitoes from Moshar Machine (CO₂) traps in Week 96 (March 27 - April 1, 2026)

Zone	N	<i>Ae. aegypti</i>	<i>Cx. quinquefasciatus</i>	<i>Cx. tritaeniorhynchus</i>	<i>Ar. subalbatus</i>	<i>An. vagys</i>	<i>An. subpictus</i>	<i>An. annularis</i>
1	48681	0	1760	518	150	28	15	30
2	95731	2	1944	1296	250	16	0	12
3	186237	3	17724	8340	373	3	2	26
4	367507	1	18484	12323	7	0	2	0
5	731925	0	1968	1312	70	2	1	13
Total	1430081	6	41880	23789	850	49	20	81
%	100.00	0.00	2.93	1.66	0.06	0.00	0.00	0.01

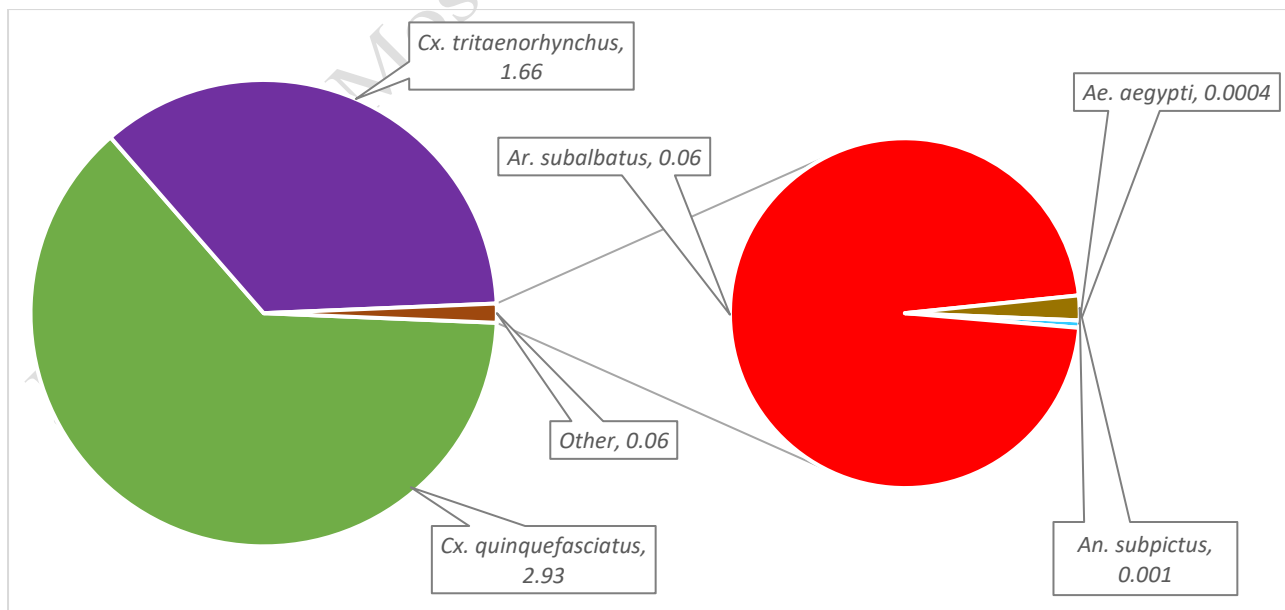


Fig. 1: Percentage of Adult Mosquitoes Collected by Moshar Machine (CO₂) traps in Week 96 (March 27 - April 1, 2026)

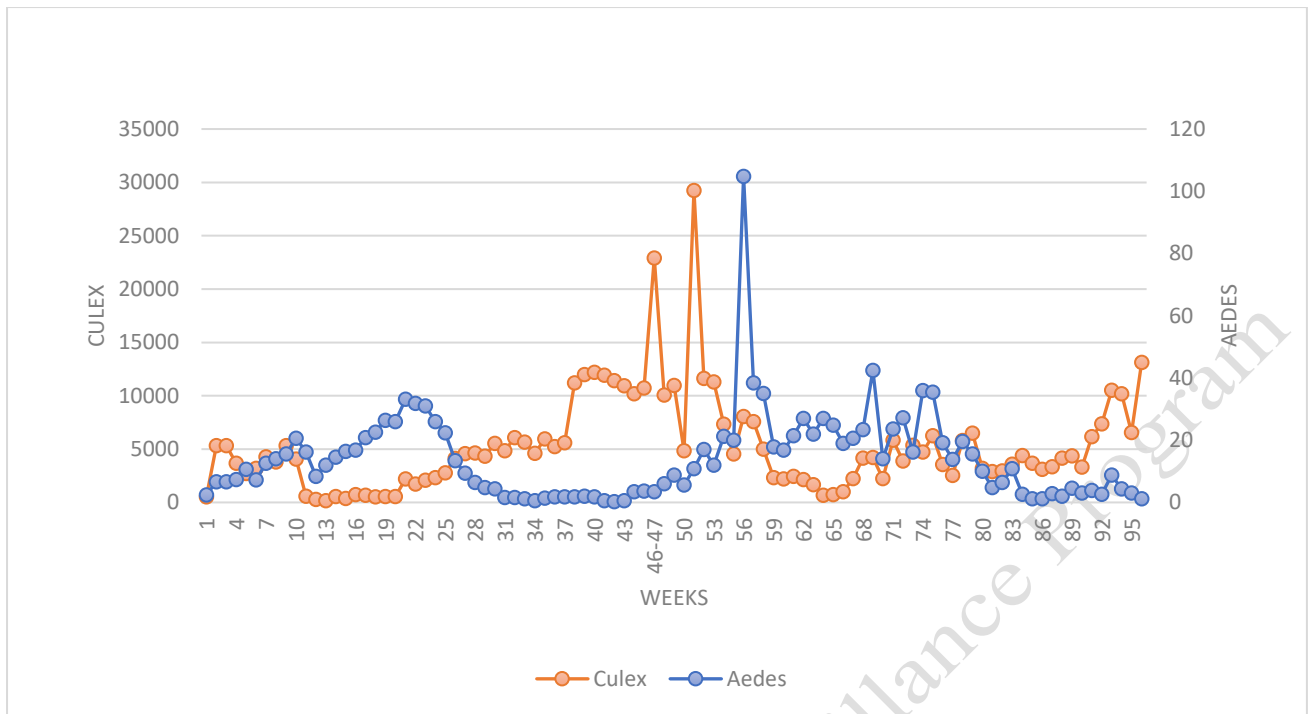


Fig 2: Average number of mosquitoes per Moshar Machine (CO₂) traps from Week 1 to Week 96 (May 2, 2024 - April 1, 2026)

Table 2. Collected Mosquito Larvae from *Aedes* X smart Traps in Week 96 (March 27 - April 1, 2026)

Zone	N	<i>Ae. aegypti</i>	<i>Ae. albopictus</i>
1	32	0	32
2	18	18	0
3	17	0	17
4	0	0	0
5	5	5	0
Total	72	23	49
(%)	100	31.94	68.06

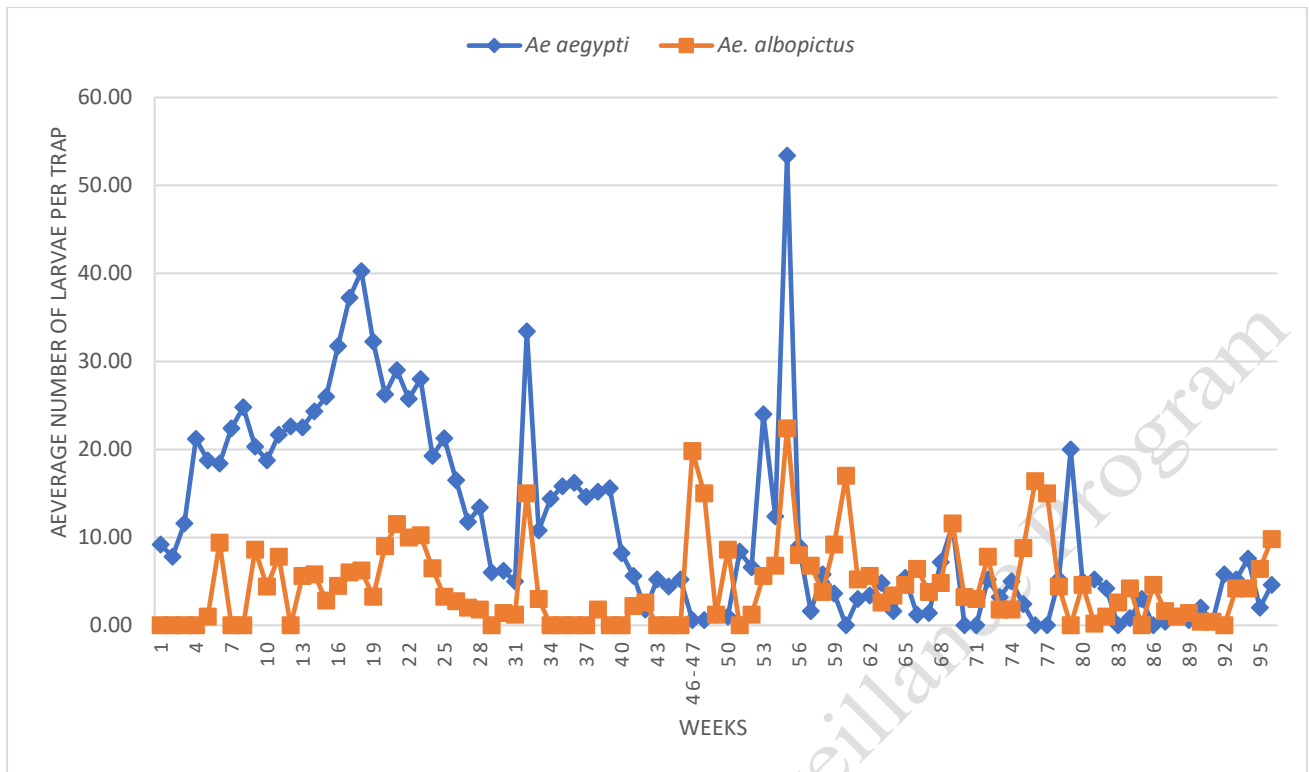


Fig 3: Average Number of Aedes Larvae per Aedes X Smart Trap in Zones 1-5 from Week 1 to Week 96 (May 2, 2024 - April 1, 2026)

Table 3. Collected Adult Mosquitoes from Gravid Trap in Week 96 (March 27 - April 1, 2026)

Zone	Number of Mosquitoes	<i>Ae. aegypti</i>	<i>Ae. albopictus</i>	<i>Cx. quinquefasciatus</i>
1	2	1	0	1
2	2	0	2	0
3	4	2	0	2
4	0	0	0	0
5	2	0	1	1
Total	10	3	3	4
(%)	100	30.00	30.00	40.00

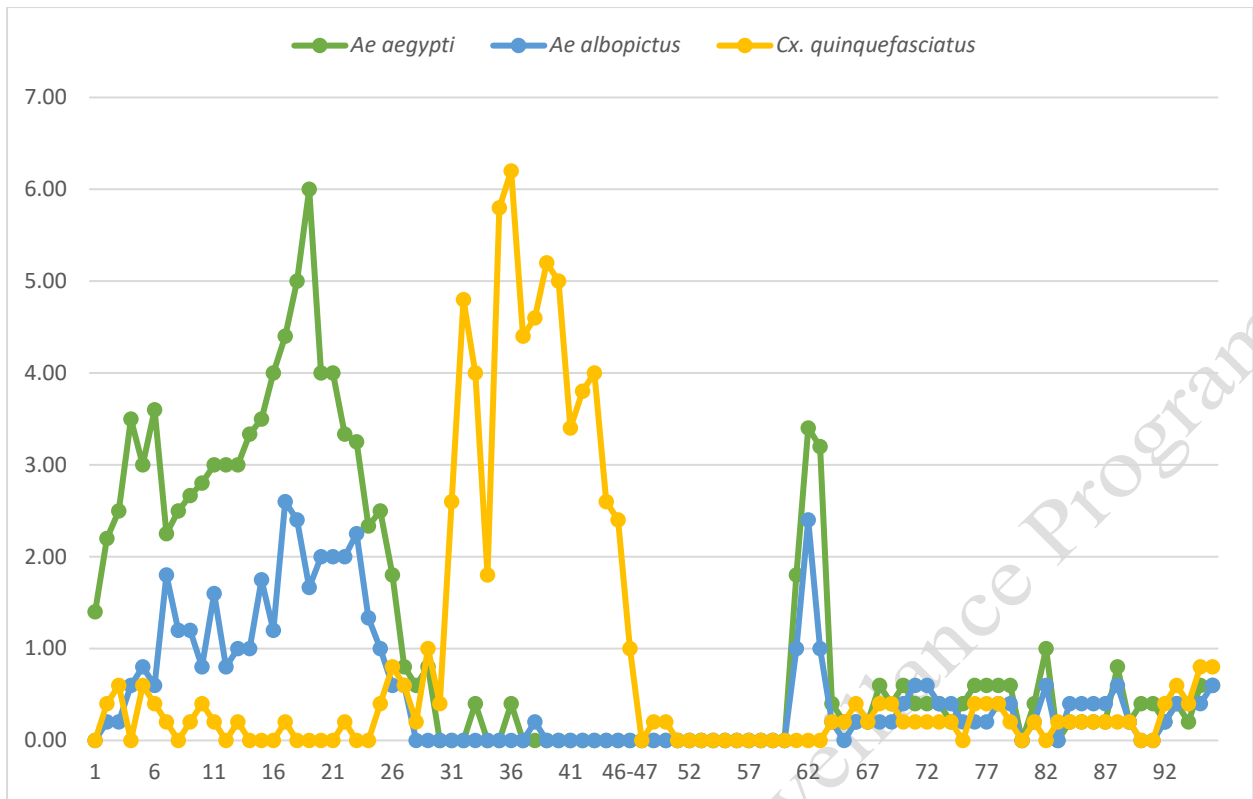


Fig 4: Average number of adult mosquitoes per Gravid trap in zones 1-5 from Week 1 to Week 96 (May 2, 2024 - April 1, 2026)

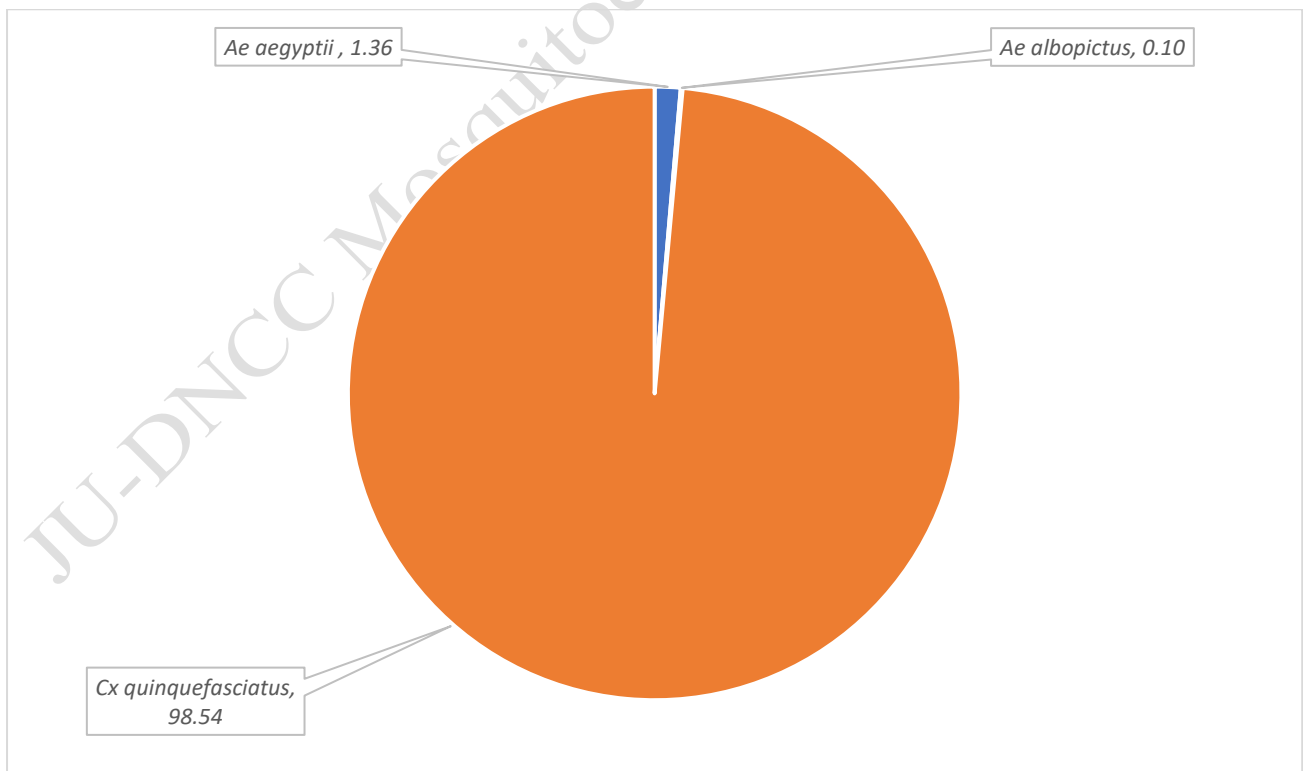


Fig. 5: Percentage of Mosquito Larvae from Zones (1-5) in Week 96 (March 27 - April 1, 2026)

Table 4. Positive Larval Spots in Different Zones (1-5) with Estimated Number of Larvae in Week 96 (March 27 - April 1, 2026)

Zone	GPS Location	<i>Ae. aegypti</i>	<i>Ae. albopictus</i>	<i>Cx. quinquefasciatus</i>	Source
1	23.8605799 90.4032033	24	0	0	Other
	23.8603583 90.4030179	58	0	0	Water tank (Cement)
	23.8608148 90.4044066	23	0	0	Plastic bucket
	23.8612781 90.4044274	0	0	85479	Plastic bucket
	23.8612573 90.4049267	254	0	0	Flower tub & tray
	23.8609292 90.4049701	89	0	0	Plastic bucket
	Total	448	0	85479	
2	23.8040339 90.3602926	154	0	0	Metal pan
	23.805159 90.3596171	24	0	0	Plastic drum (Sealable)
	23.8058914 90.3587378	42	0	0	Refrigerator tray
	Total	220	0	0	
3	23.7861845 90.4164717	21	0	0	Other Plastic drum (Sealable)
	23.7861333 90.4159914	32	0	0	Flower tub & tray
	23.7861214 90.4155255	52	0	0	Plastic bucket
	23.7861541 90.4154837	0	52	0	Other
	23.7860765 90.4152263	0	11	0	Plastic bucket
	Total	105	63	0	
5	23.7611231 90.3580165	21	0	0	Plastic bucket

5	23.7615084 90.3573215	24	0	0	Other
	23.7611237 90.3563382	0	21	0	Other
	23.7609777 90.3562687	51	0	0	Money plants tub
	23.7609732 90.3561574	33	0	0	Money plants tub
	23.7609969 90.3560502	26	0	0	Basement/Parking
	23.7609023 90.3553974	254	0	0	Water tank (Cement)
	Total	409	21	0	
Grand Total		1182	84	85479	

Household Positive ● Negative ● Positive



Map 1: Positive and Negative House of Uttara 4 No. Sector at Weeks 95

Household Positive ● Negative ● Positive



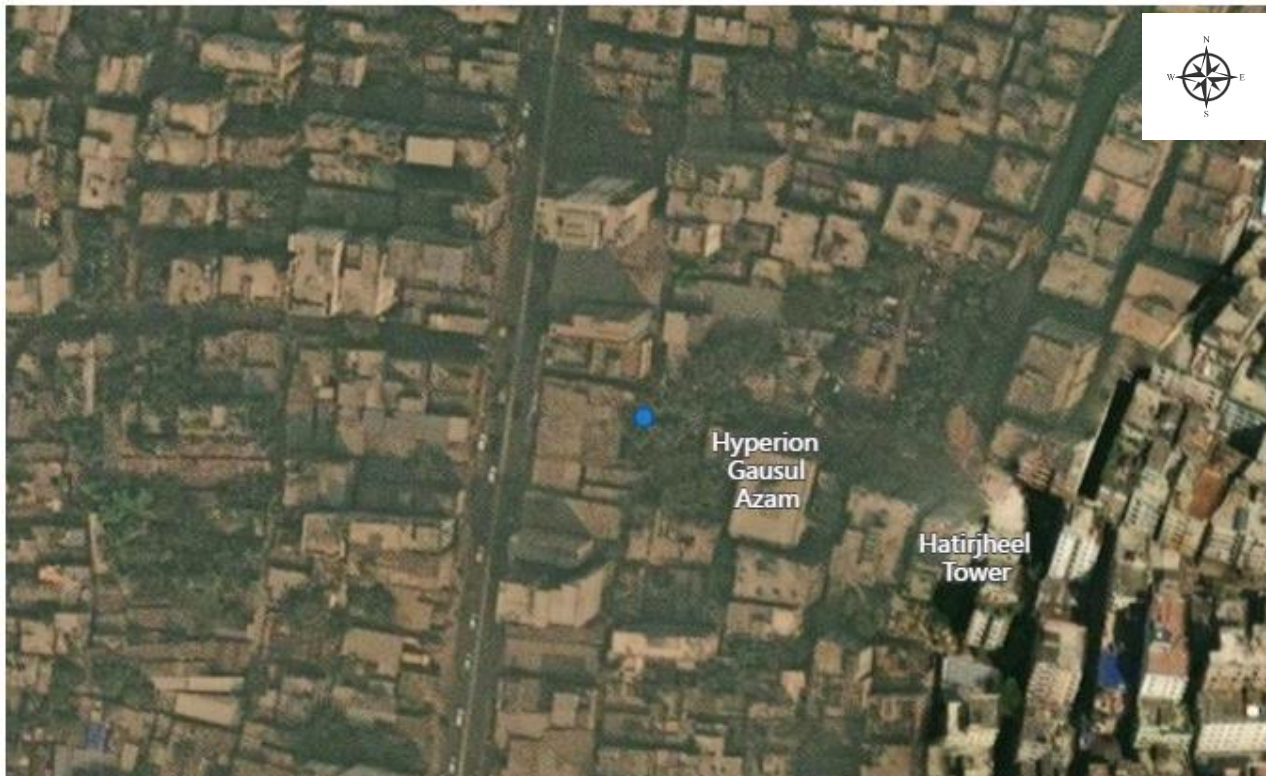
Map 2: Positive and Negative House of Mirpur 2 at Weeks 95

Household Positive ● Negative ● Positive



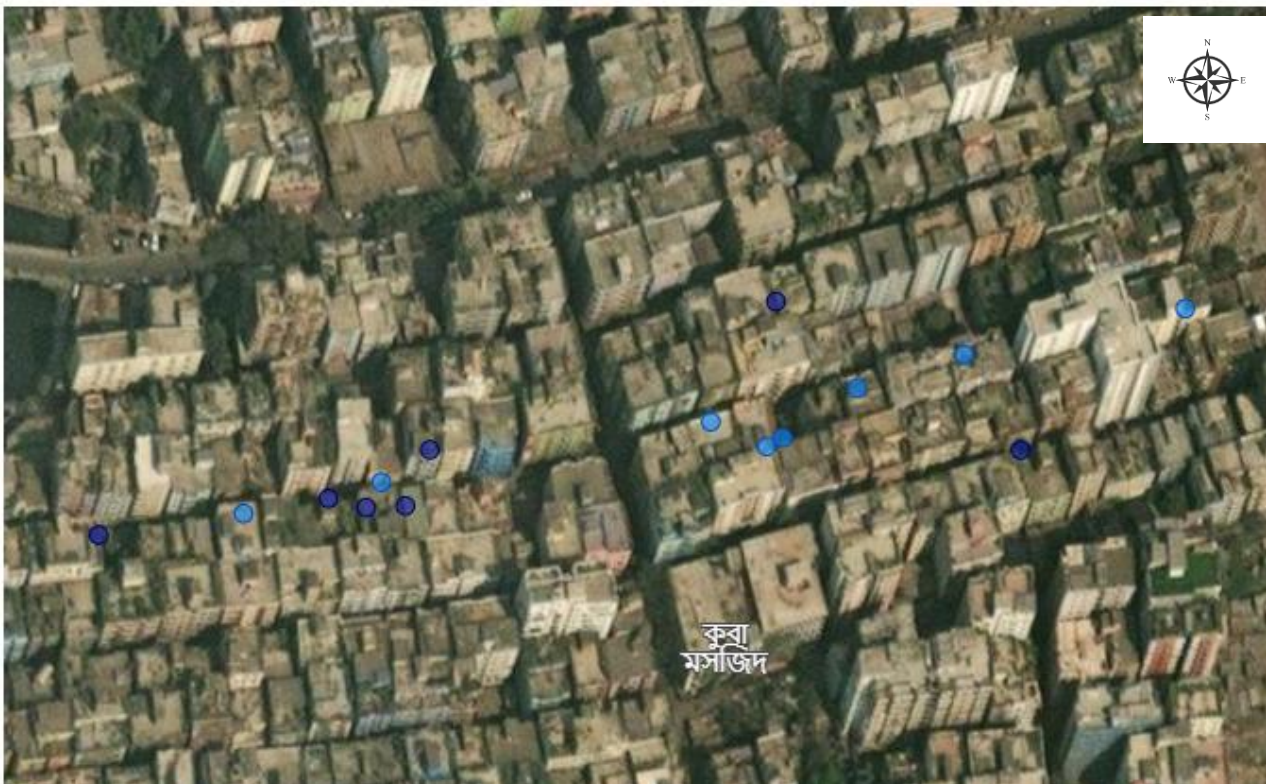
Map 3: Positive and Negative House of Gulsan 1 at Weeks 95

Household Positive ● Negative



Map 4: Positive and Negative House of Mirpur 1 at Weeks 95

Household Positive ● Negative ● Positive



Map 5: Positive and Negative House of Mohammadpur at Weeks 95

Table 5: Positive House, Wet Container, BI, CI and HI in Zones (1-5) in Week 96 (March 27 - April 1, 2026)

Zone	Total House	Positive House	Total Wet container	Positive Wet Container	BI	CI	HI
1	15	6	41	7	46.67	17.07	40.00
2	15	3	39	4	26.67	10.26	20.00
3	15	5	53	12	80.00	22.64	33.33
4	15						
5	15	7	35	10	66.67	28.57	46.67

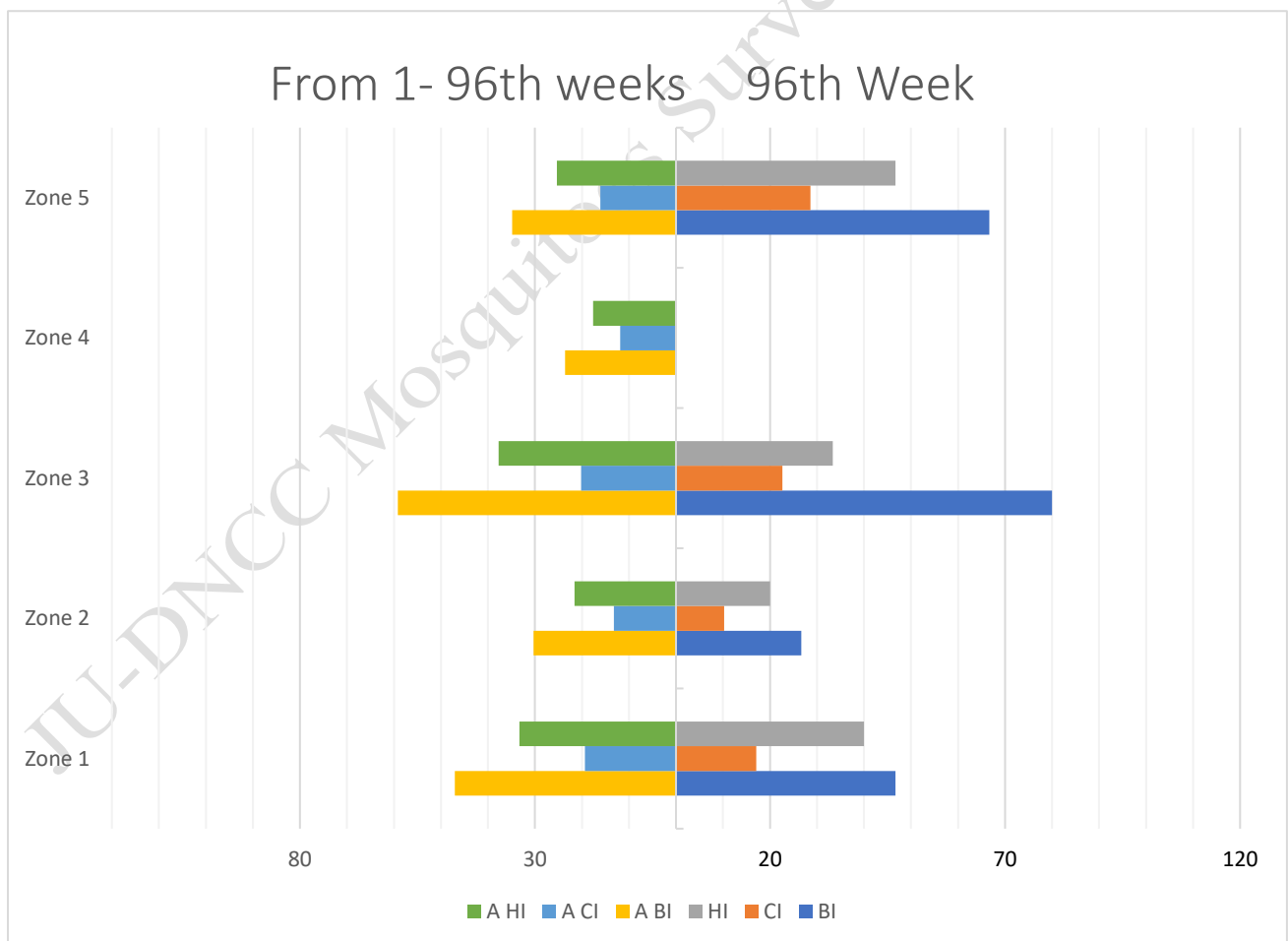


Fig. 6: BI, CI and HI in Different Zones (1-5) of Dhaka north City Corporation

*NB: "A" stands for Average from 1st week.

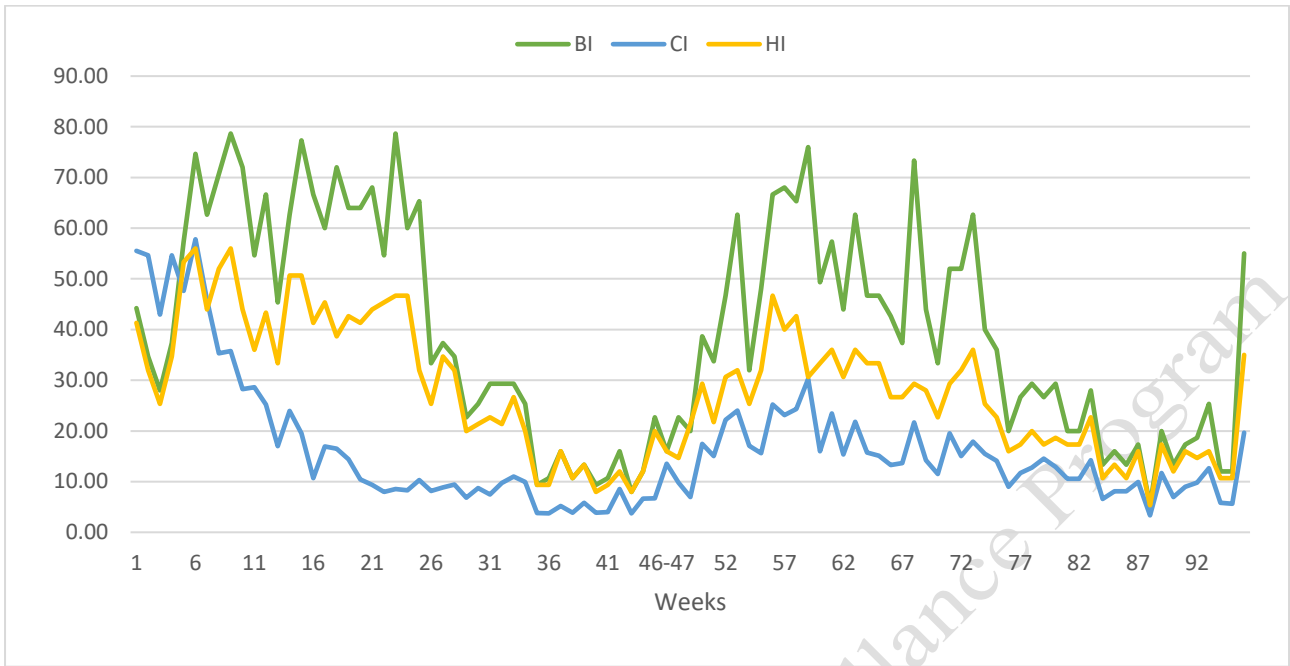


Fig 7: Mosquitoes population fluctuation (BI, CI, HI) from Week 1 to Week 96 (May 2, 2024 - April 1, 2026)

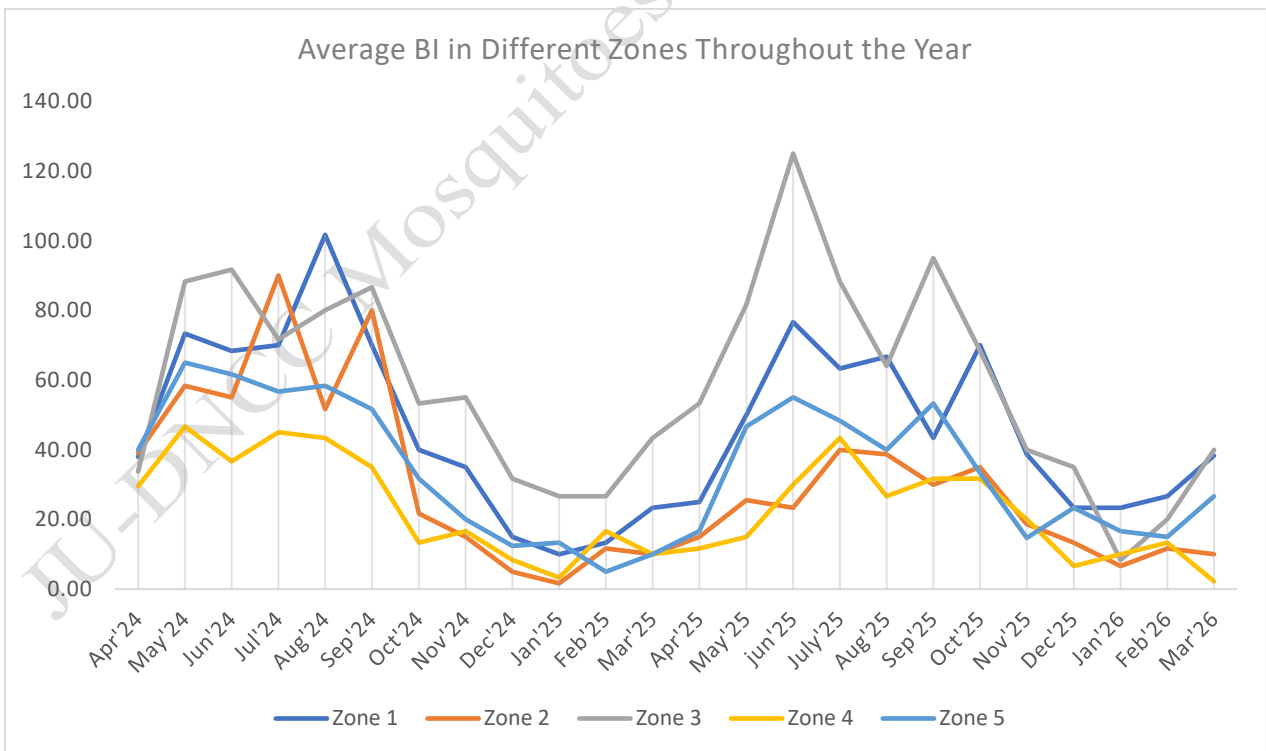


Fig. 8: Breteau Index (BI) in Different Zones from Week 1 to Week 96 (May 2, 2024 - April 1, 2026)

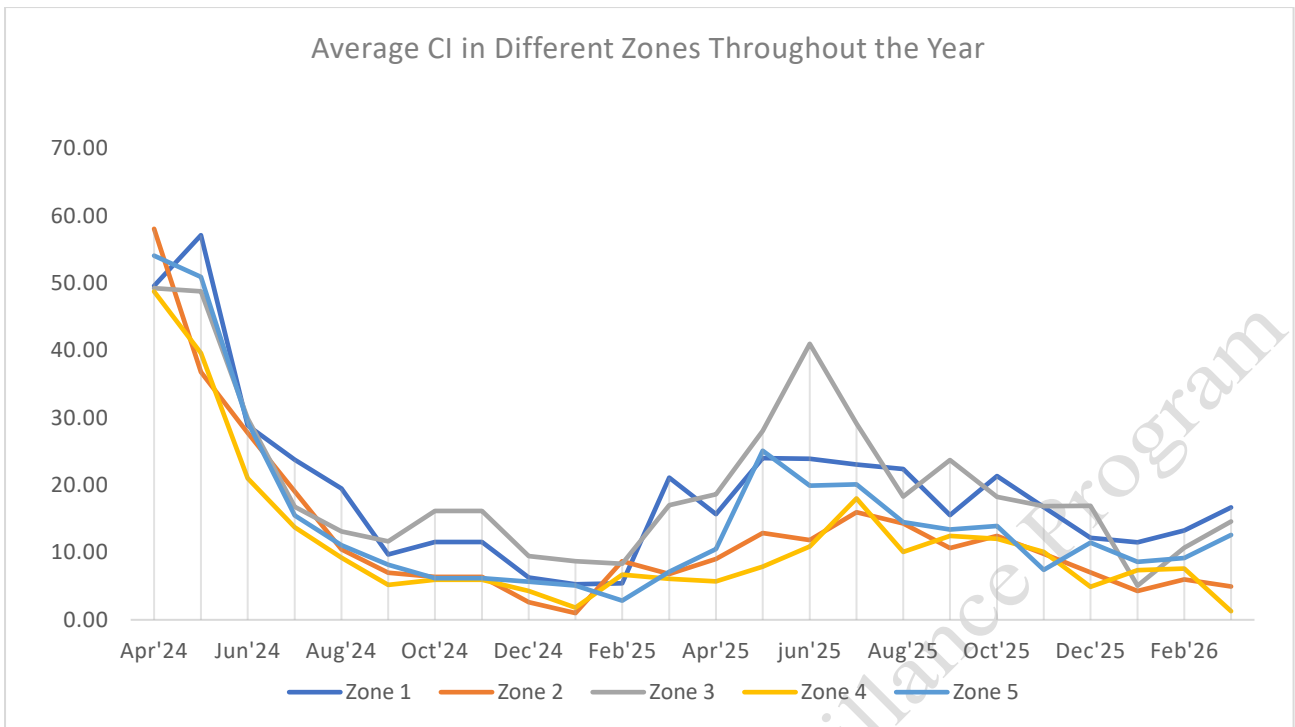


Fig. 9: Container Index (CI) in Different Zones from Week 1 to Week 96 (May 2, 2024 - April 1, 2026)

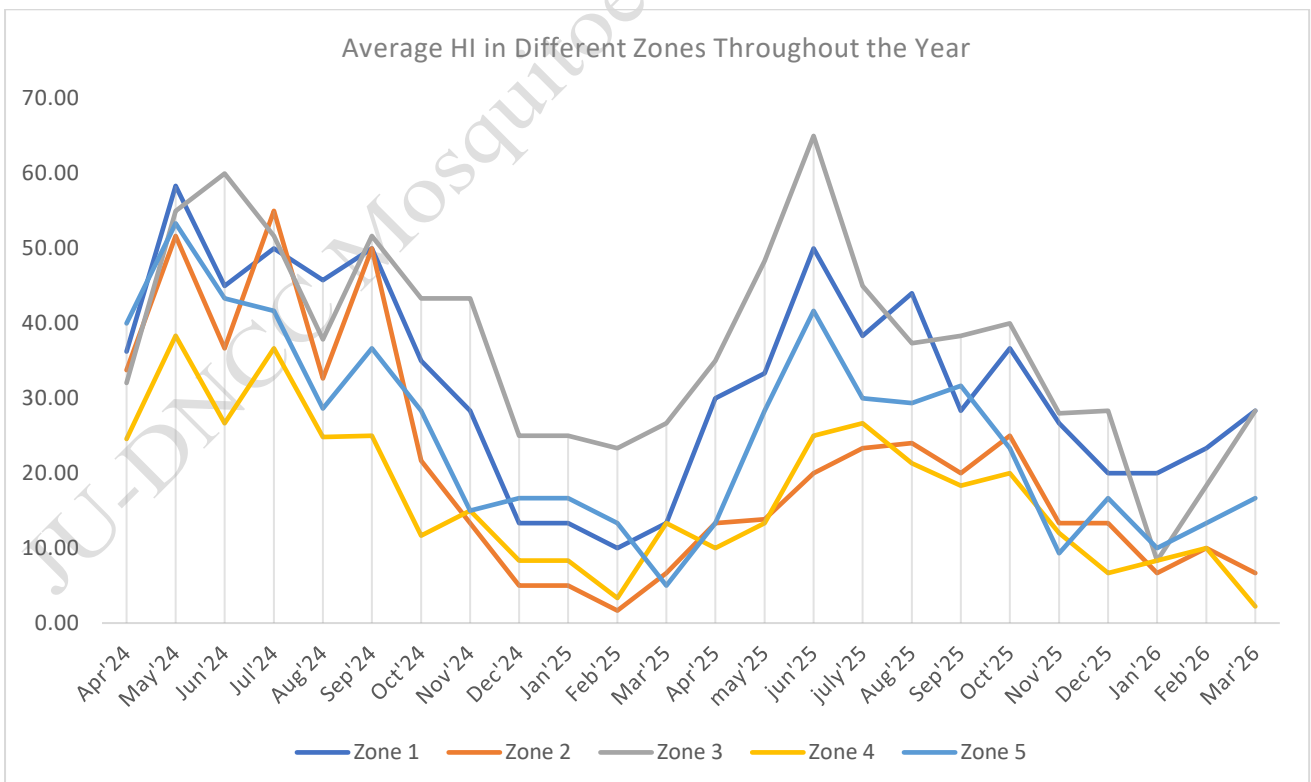


Fig. 10: House Index (HI) in Different Zones from Week 1 to Week 96 (May 2, 2024 - April 1, 2026)

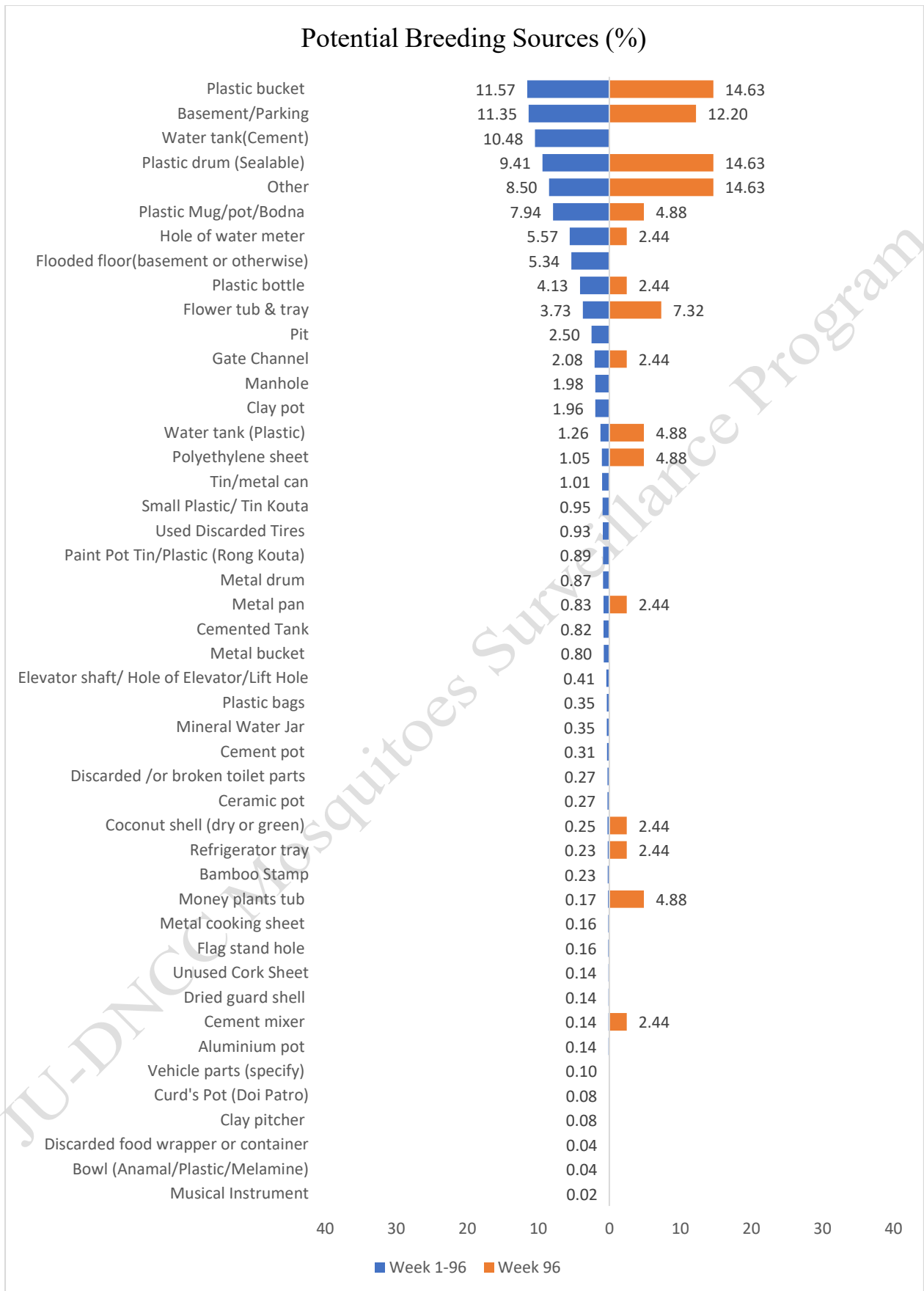


Fig. 11: Container Frequency for *Aedes* mosquitoes in Zones (1-5)

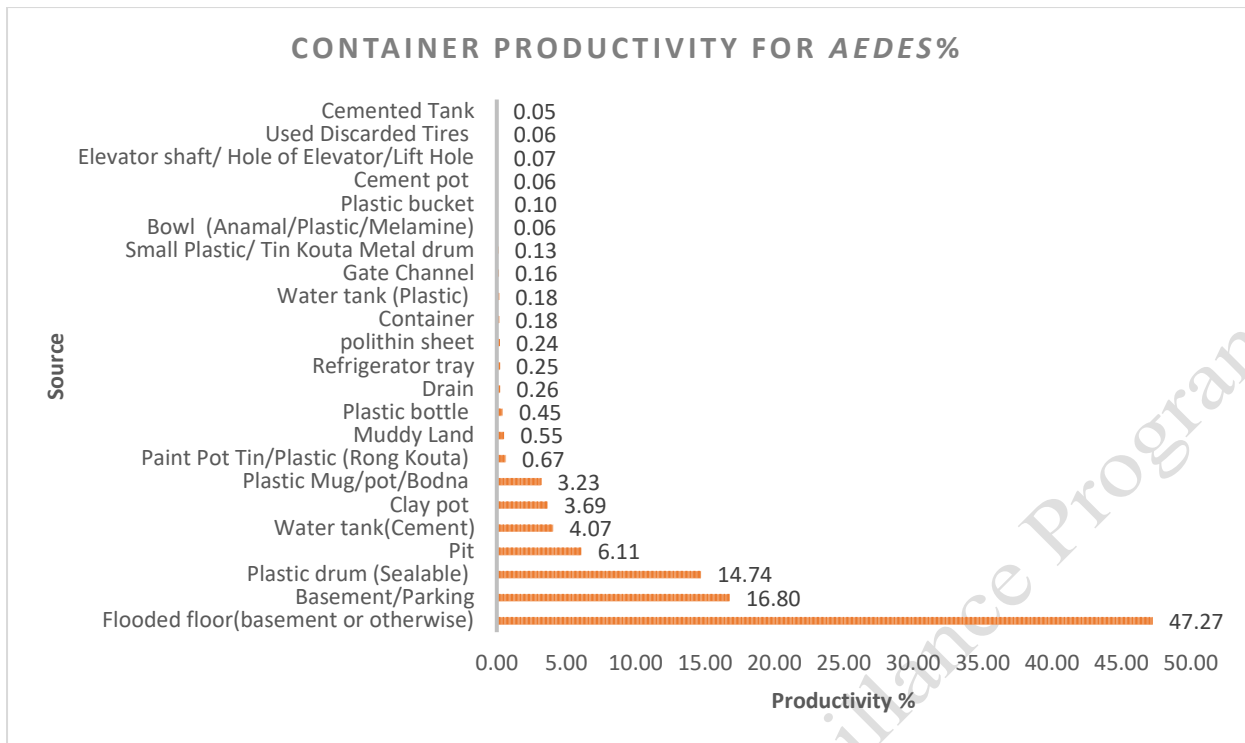


Fig. 12: Container Productivity of *Aedes* mosquito in DNCC from Week 1 to Week 96 (May 2, 2024 - April 1, 2026)

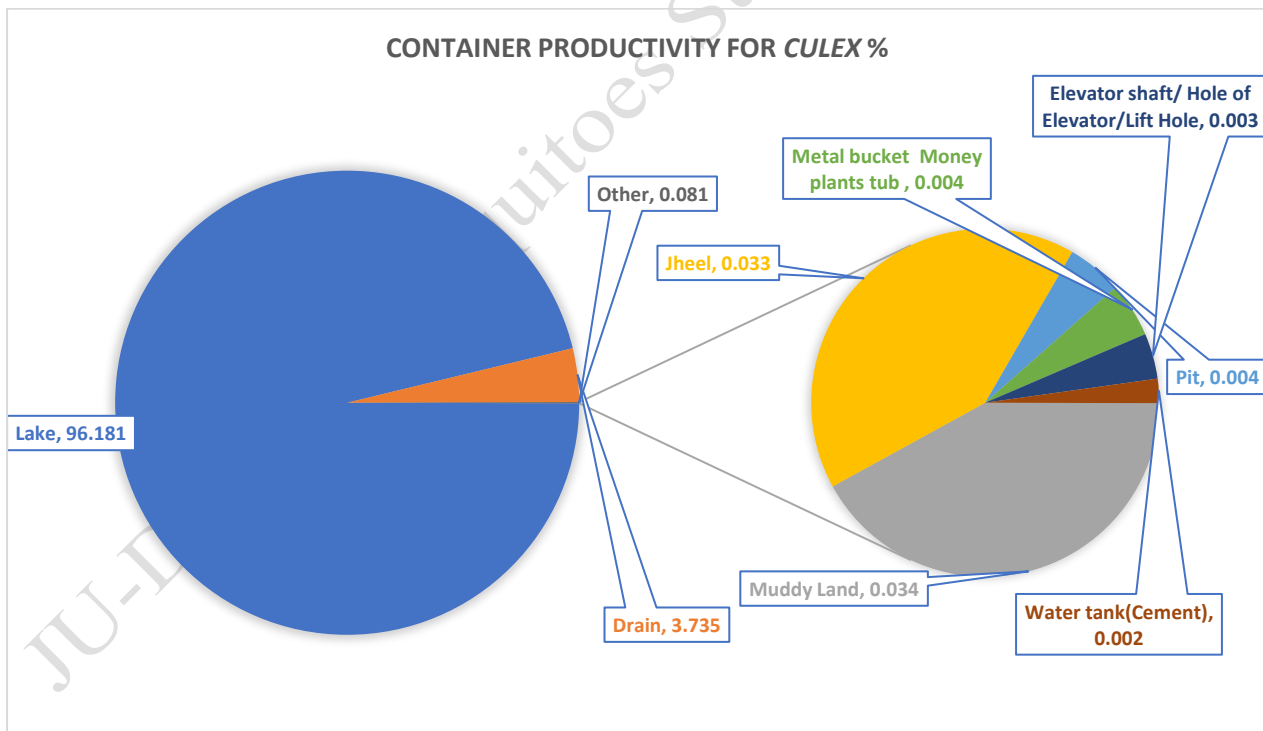


Fig. 13: Container Productivity of *Culex* mosquito in DNCC, from Week 1 to Week 96 (May 2, 2024 - April 1, 2026)

Table 6: Container Frequency & Probable potential Wet Container in zones (1-5) from Week 1 to Week 96 (May 2, 2024 - April 1, 2026)

Sources	+House	-WC	+WC	Total WC	% WC	% PWC
1	202	261	335	596	11.57	6.50
Basement/Parking	211	42	543	585	11.35	10.54
Water tank(Cement)	167	252	288	540	10.48	5.59
Plastic drum (Sealable)	228	78	407	485	9.41	7.90
Other	211	130	308	438	8.50	5.98
Plastic Mug/pot/Bodna	166	82	327	409	7.94	6.35
Hole of water meter	54	6	281	287	5.57	5.45
Flooded floor(basement or otherwise)	128	138	137	275	5.34	2.66
Plastic bottle	80	63	150	213	4.13	2.91
Flower tub & tray	71	25	167	192	3.73	3.24
Pit	62	22	107	129	2.50	2.08
Gate Channel	31	34	73	107	2.08	1.42
Manhole	55	29	73	102	1.98	1.42
Clay pot	83	11	90	101	1.96	1.75
Water tank (Plastic)	20	28	37	65	1.26	0.72
Polyethylene sheet	33	3	51	54	1.05	0.99
Tin/metal can	30	0	52	52	1.01	1.01
Small Plastic/ Tin Kouta	24	9	40	49	0.95	0.78
Used Discarded Tires	28	16	32	48	0.93	0.62
Paint Pot Tin/Plastic (Rong Kouta)	30	5	41	46	0.89	0.80
Metal drum	17	7	38	45	0.87	0.74
Metal pan	18	3	40	43	0.83	0.78
Cemented Tank	22	13	29	42	0.82	0.56
Metal bucket	20	5	36	41	0.80	0.70
Elevator shaft/ Hole of Elevator/Lift Hole	7	4	17	21	0.41	0.33
Mineral Water Jar	6	4	14	18	0.35	0.27
Plastic bags	8	1	17	18	0.35	0.33
Cement pot	11	1	15	16	0.31	0.29
Ceramic pot	13	0	14	14	0.27	0.27
Discarded /or broken toilet parts	11	2	12	14	0.27	0.23
Coconut shell (dry or green)	4	0	13	13	0.25	0.25
Bamboo Stamp	9	0	12	12	0.23	0.23
Refrigerator tray	9	0	12	12	0.23	0.23
Money plants tub	7	0	9	9	0.17	0.17
Flag stand hole	4	1	7	8	0.16	0.14
Metal cooking sheet	2	0	8	8	0.16	0.16
Aluminium pot	4	0	7	7	0.14	0.14
Cement mixer	2	0	7	7	0.14	0.14
Dried guard shell	4	0	7	7	0.14	0.14
Unused Cork Sheet	5	1	6	7	0.14	0.12
Vehicle parts (specify)	3	1	4	5	0.10	0.08
Clay pitcher	3	1	3	4	0.08	0.06
Curd's Pot (Doi Patro)	3	0	4	4	0.08	0.08
Bowl (Anamal/Plastic/Melamine)	2	0	2	2	0.04	0.04
Discarded food wrapper or container	1	0	2	2	0.04	0.04
Musical Instrument	1	0	1	1	0.02	0.02



Table 7: Percentage of breeding sources in different zone from Week 1 to Week 96 (May 2, 2024 - April 1, 2026)

Containers	Percentage of Breeding Sources				
	Zone 01	Zone 02	Zone 03	Zone 04	Zone 05
Plastic bucket	2.04	2.02	2.27	2.87	2.37
Basement/Parking	2.81	1.71	3.01	1.13	2.70
Water tank(Cement)	1.34	1.69	1.38	3.03	3.05
Plastic drum (Sealable)	1.38	2.27	1.65	2.17	1.94
Other	2.79	1.46	2.35	0.72	1.18
Plastic Mug/pot/Bodna	1.44	1.42	1.53	2.23	1.32
Hole of water meter	0.68	1.13	0.27	1.75	1.75
Flooded floor(basement or otherwise)	1.38	1.18	0.89	0.58	1.30
Plastic bottle	0.54	0.95	0.60	1.09	0.95
Flower tub & tray	1.09	0.60	1.28	0.45	0.31
Pit	0.66	0.33	0.83	0.33	0.35
Gate Channel	0.78	0.19	0.60	0.08	0.43
Manhole	0.82	0.23	0.62	0.21	0.10
Clay pot	0.23	0.41	0.60	0.23	0.49
Water tank (Plastic)	0.00	0.80	0.17	0.16	0.14
Polyethylene sheet	0.31	0.27	0.21	0.17	0.08
Tin/metal can	0.29	0.27	0.19	0.19	0.06
Small Plastic/ Tin Kouta	0.25	0.17	0.27	0.12	0.14
Used Discarded Tires	0.35	0.25	0.17	0.08	0.08
Paint Pot Tin/Plastic (Rong Kouta)	0.21	0.10	0.27	0.19	0.12
Metal drum	0.17	0.10	0.21	0.29	0.10
Metal pan	0.17	0.16	0.27	0.10	0.14
Cemented Tank	0.16	0.12	0.19	0.23	0.12
Metal bucket	0.12	0.08	0.23	0.21	0.16
Elevator shaft/ Hole of Elevator/Lift Hole	0.17	0.10	0.08	0.00	0.06
Mineral Water Jar	0.04	0.02	0.06	0.16	0.08
Plastic bags	0.04	0.02	0.08	0.12	0.10
Cement pot	0.04	0.00	0.12	0.02	0.14
Ceramic pot	0.06	0.02	0.06	0.02	0.12
Discarded /or broken toilet parts	0.02	0.14	0.04	0.00	0.08
Coconut shell (dry or green)	0.06	0.06	0.06	0.04	0.04
Bamboo Stamp	0.06	0.08	0.04	0.06	0.00
Refrigerator tray	0.08	0.04	0.06	0.04	0.02
Money plants tub	0.06	0.04	0.04	0.00	0.04
Flag stand hole	0.08	0.02	0.02	0.00	0.04
Metal cooking sheet	0.00	0.02	0.06	0.04	0.04
Aluminium pot	0.02	0.04	0.00	0.06	0.02
Cement mixer	0.00	0.04	0.04	0.02	0.04
Dried guard shell	0.04	0.00	0.08	0.00	0.02
Unused Cork Sheet	0.00	0.02	0.04	0.02	0.06
Vehicle parts (specify)	0.02	0.00	0.06	0.02	0.00
Clay pitcher	0.04	0.00	0.02	0.02	0.00
Curd's Pot (Doi Patro)	0.02	0.02	0.04	0.00	0.00
Bowl (Anamal/Plastic/Melamine)	0.02	0.02	0.00	0.00	0.00
Discarded food wrapper or container	0.00	0.00	0.04	0.00	0.00
Musical Instrument	0.02	0.00	0.00	0.00	0.00



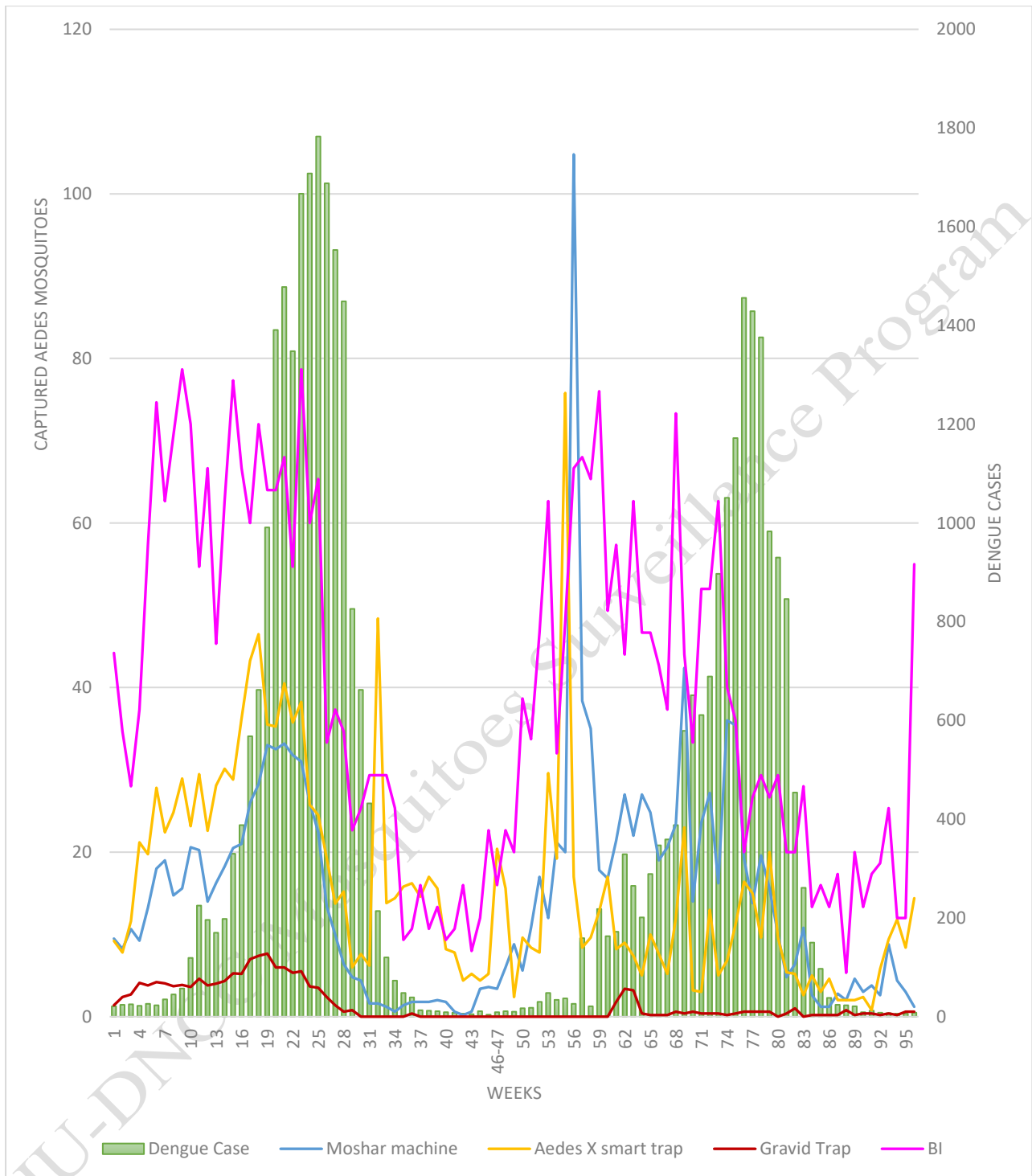


Fig. 14: Correlation between Dengue Cases and *Aedes* Mosquitoes Captured by per Moshar Machine CO₂ traps, Aedes X smart traps, and Gravid traps

NB: DNCC dengue cases only

Photographs of Mosquitoes Surveillance



Samples Collection from Field



Samples Processing and Identification



Comments:

Overall mosquito density is decreasing and the dengue cases declining rapidly. The Breteau Index (BI) is increased rapidly in week 96 . It is time for taking precaution and preparation for higher mosquito control. Moreover, this highlights the importance of continued surveillance to uncover hidden risks and to guide timely interventions.

For Aedes Mosquito Control

- Aedes mosquito density varies across locations, with notable breeding found in plastic drums, buckets, flooded basements, and water tanks, as seen in larval and trap data.
- Continuous surveillance is essential to monitor trends and target control interventions effectively.
- Frequent cleaning and management of water-holding containers (e.g., pots, bottles, plastic drums, and construction site debris) are vital.
- Permanent breeding habitats should be managed with larvicides or Insect Growth Regulators (IGRs) for sustained control.
- Construction sites must be regularly inspected and treated due to their high potential for breeding.

For Other Mosquito Control

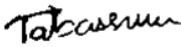
- Drainage systems should be kept flowing to prevent stagnant water accumulation.
- Canals, ponds, lakes, and muddy lowlands should be cleaned of waste, weeds, and organic matter.
- Septic tanks must be covered and regularly maintained.
- Emphasis should be placed on slum areas and waterlogged urban zones, which are significant breeding grounds for Culex mosquitoes.

Public Awareness and Community Involvement

- Launch targeted awareness campaigns, especially in vulnerable and high-risk areas.
- Encourage communities to eliminate standing water regularly.
- Promote participatory surveillance and control efforts, including homeowner engagement in larval source reduction.

Copy sent for your information and further action (FYI/FA):

1. CHO, Health Department, Dhaka North City Corporation
2. Secretary, Dhaka North City Corporation
3. PS to Administrator, Dhaka North City Corporation
4. Staff Officer of CEO, Dhaka North City Corporation
5. Office Copy



(Tabassum Mostofa Mim)
Entomologist
IRES
JU-DNCC Collaboration Center



(Prof. Dr. Kabirul Bashar)
Focal person
IRES
JU-DNCC Collaboration Center