

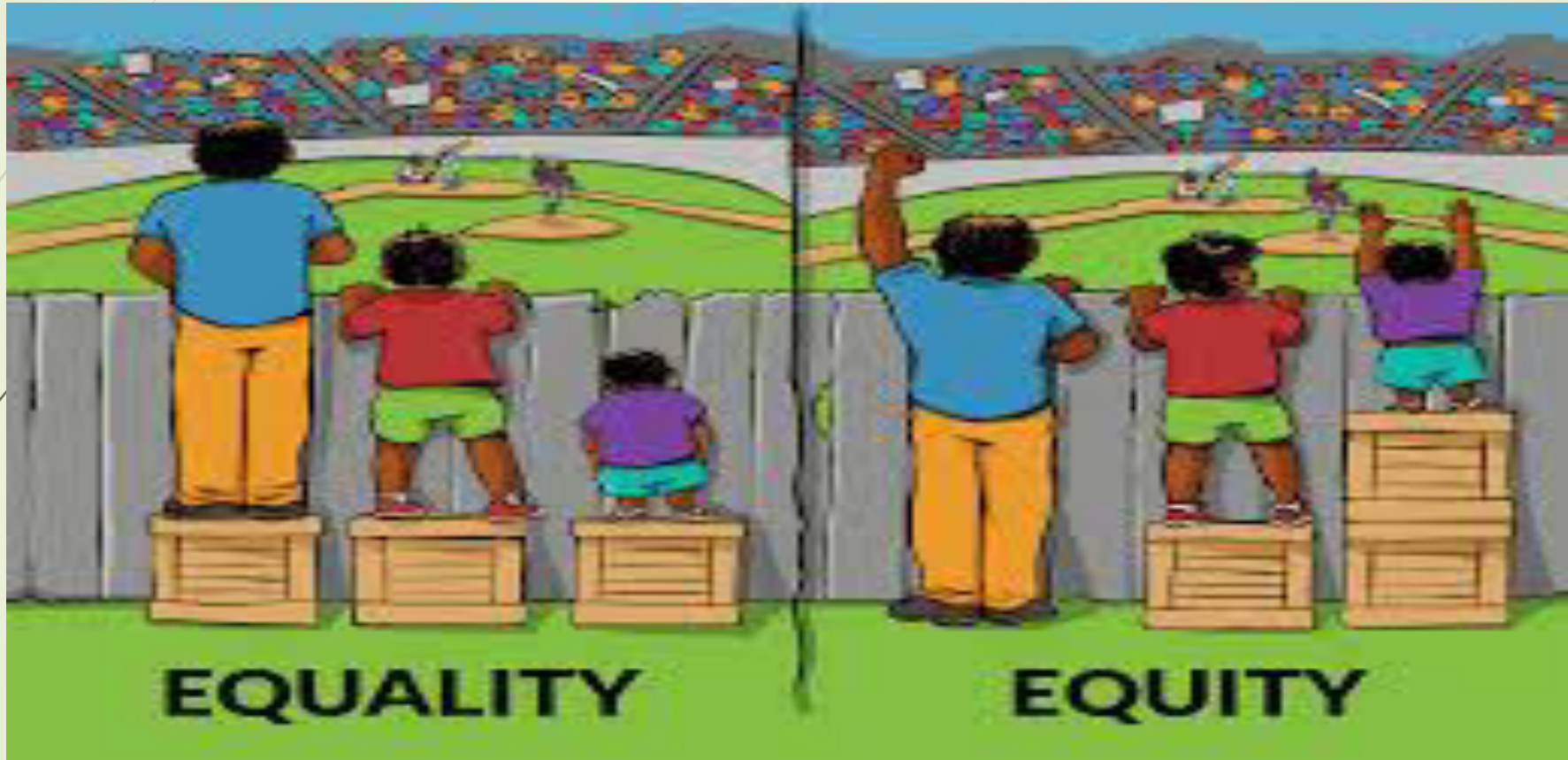
Social Determinants of Health In Undergraduate Curriculum

Ways to Achieve The Goal (Health Equity)




Dr. Debasish Das
Thoracic Surgery, DMCH.

Equity & Equality






The concept of Equity

- ▶ It refers to the fairness and justice in the distribution of resources, opportunities and privileges while taking into account the unique circumstances and needs of individuals and groups.
 - ▶ **It focuses on creating a level playing field to attain a certain goal.**
- 



The concept of Equality

- ▶ Equality refers to the principle of treating everyone the same or providing the exact same opportunity and resources to all individual and groups regardless of the needs and shortcomings.
 - ▶ **It primarily focuses on fair competition to determine the winner.**
- 



Health Equity



- ▶ It refers to the state where everyone has a fair and just opportunity to attain their highest possible level of health, considering their social, economic, or demographic background



Inequity in health

- ▶ Inequity in health starts just after birth

Life expectancy

Geography (Africa, South Asia, Europe)

Social and Economic Status

Educational Status of the family

Gender

Women usually lives longer than male with equal health access.

Social Factors

Diet, weather, Social hierarchy



Examples of Inequity

- ▶ Inequity is also present in developed world
 - the life expectancy of people of England- 54 to 81Yrs
 - 81 is in affluent class
 - 54 in deprived group living in Glasgow (which is lower than some 3rd world countries)



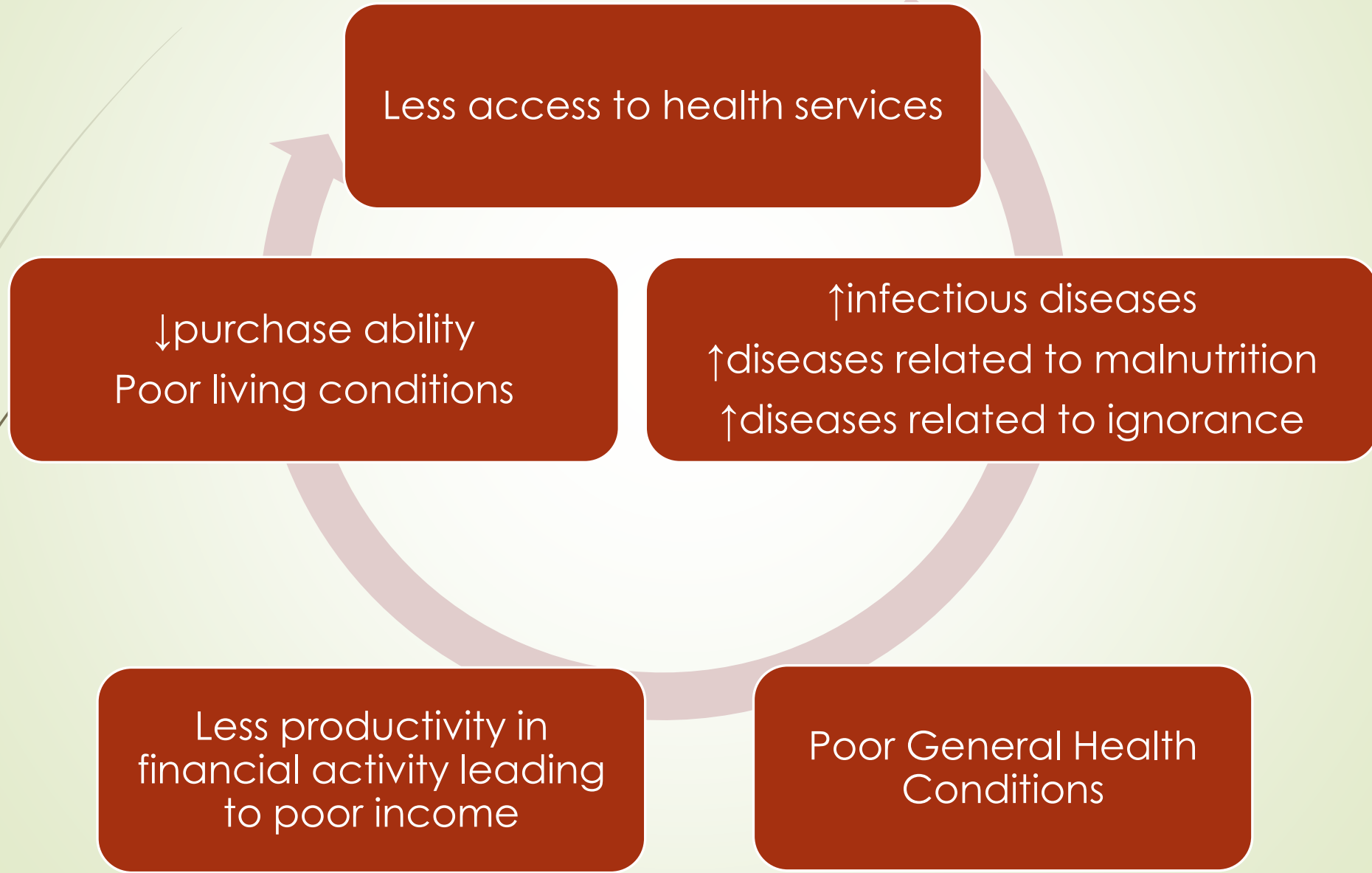
SDG & health equity

➤ **SDG's Principle of Health Equity**

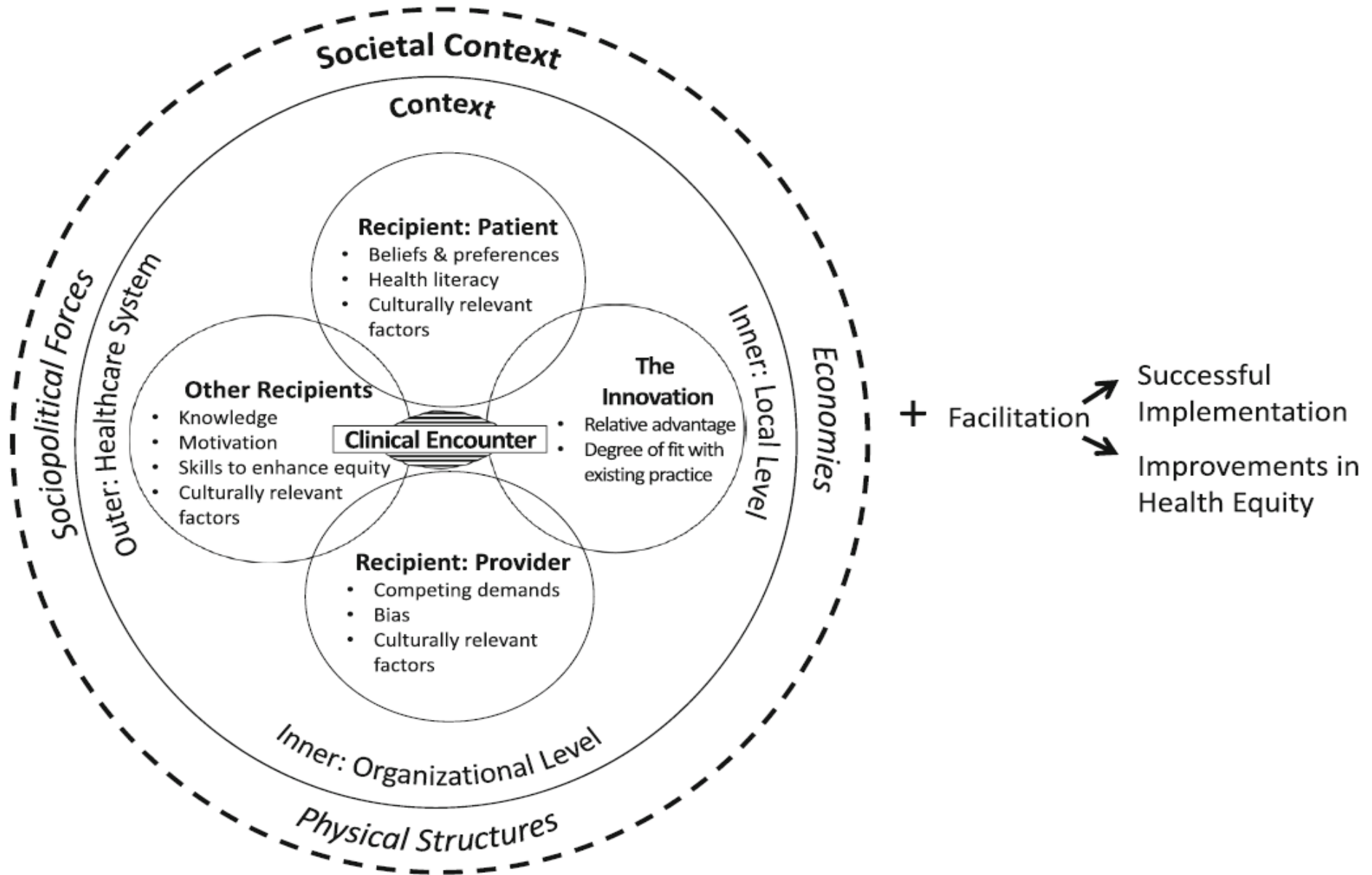
- Leaving no one behind
- Implicit moral imperative of social justice (সামাজিক ন্যায় বিচারের অন্তর্নিহিত নৈতিক বাধ্যবাধকতার প্রতিফলন)

It focuses on removing the avoidable reasonable means that hinders the establishment of equity

Mechanism hindering health equity



How to break the Cycle





Examples of achieving Health Equity

- ▶ In the early 19s in Ahmedabad a large portion of lower cast Hindus had poor living conditions & limited access to healthcare leading to high MMR & IMRs.

Remedies:

introduction of state funded social markets that involved females/mothers with intensification of vaccination services to that group (in social markets).



Examples of achieving Health Equity

- ▶ Brazil in early 20s had a population group residing in low lying land affected by regular floods & droughts with no sanitation and drinking water - recurrent diarrhea leading to infant and adult death
poor general health in children
high death rate in pregnant women/ new moms.

Remedies-

all school going kids were made to be present at schools where along with education there receive health attention.

Young mothers were also attended

Examples of achieving Health Equity (China)

	Health Inequities		China's Solution
	Poor Provinces	Wealthy provinces	
1. Wider range of Life Expectancy	65yrs	78 years	<ol style="list-style-type: none"> 1. Increased state funding in public health activities. 2. Introduction of health insurance scheme, rural co operative medical scheme, medical financial assistance scheme. 3. Changing Drugs and instruments policy from profit seeking to economically viable.
2. Infant Mortality Rate	64	10	
3. Malnutrition	4.5%	9,3%	
4. Essential Primary Health Care	35%	60-65%	

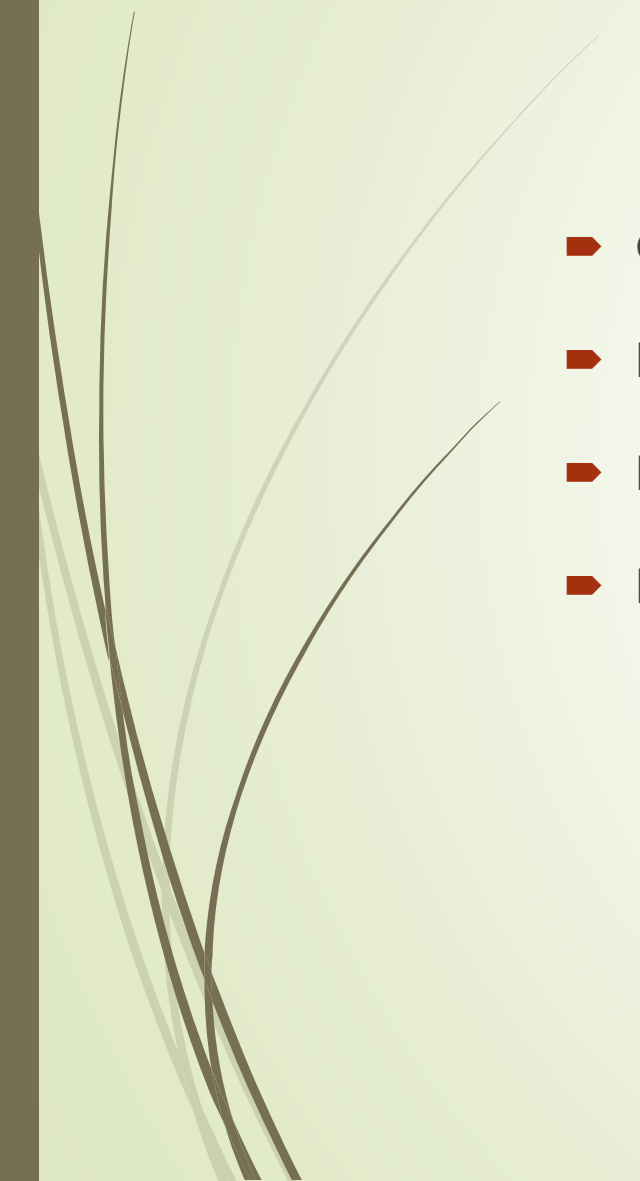


Health inequity in Bangladesh

- Infant death is 35/1000 in low income group whereas 14/1000 in affluent class (Borgen Project)
- Female in rural areas has less reproductive health care access.
- Specialist health care is very difficult to get in rural areas
- Incidence of malnutrition is higher in low income group than the affluent class
- Obesity, Hypertension and Diabetes are more common in affluent groups.



Stakeholders in achieving health equity

- ▶ Government of Bangladesh
 - ▶ Private Sector
 - ▶ NGOs
 - ▶ Donor agencies
- 



Examples of ongoing programs aimed at establishing health equity

- EPI
- Periodic vitamin A capsule distribution program
- De-worming programs in rural school
- Reproductive health & disease control program
- IMCI programs in UHCs



Some major facts

- No country in the world is immune to health inequities
- Attaining absolute health equity is nearly impossible as it depends on the dynamic relationship of several factors.

The key target is to narrow/tighten the existing gap between different social groups.



Conclusion



- ▶ Attaining health equity is multi sectorial
- ▶ It requires a lot of government agencies to work synchronously
- ▶ Political willingness, proper planning/action plan and financial allocation pays a crucial role.


References

METHODOLOGY

Open Access


A more practical guide to incorporating health equity domains in implementation determinant frameworks



Eva N. Woodward^{1,2*} , Rajinder Sonia Singh^{2,3}, Phiwinhlanhla Ndebele-Ngwenya⁴, Andrea Melgar Castillo⁵, Kelsey S. Dickson⁶ and JoAnn E. Kirchner^{2,7}

COMMENTARY

Practical Approaches for Promoting Health Equity in Communities

Larissa Calancie¹  · Ann Batdorf-Barnes² · Sarah Verbiest³ · Nevillene White⁴ · Kristen Hassmiller Lich⁵ · Giselle Corbie⁶ · Amy Mullenix⁷ · Dorothy Cilenti⁷

Health System Reform in China 1



Tackling the challenges to health equity in China

Shenglan Tang, Qingyue Meng, Lincoln Chen, Henk Bekedam, Tim Evans, Margaret Whitehead

References

How to Achieve Health Equity

Marshall H. Chin, M.D., M.P.H.

Two studies in this issue of the *Journal* indicate that differences in how we deliver care to patients in various racial or ethnic groups have narrowed nationally, but health outcomes are

ensure that they take their medications, consume healthful diets, and are physically active. The best care spans outpatient care, inpatient care, and self-care and is tailored to the needs

Policy Approaches to Advancing Health Equity

Mary Hall, MPH; Corinne Graffunder, DrPH, MPH; Marilyn Metzler, MPH, RN

Public Health

Achieving health equity: from root causes to fair outcomes



Michael Marmot, on behalf of the Commission on Social Determinants of Health

References

Research Full Report



Healthy People 2030

OPEN

How Do We Define and Measure Health Equity? The State of Current Practice and Tools to Advance Health Equity

Deborah Hoyer, MPH; Elizabeth Dee, MPH; Meghan S. O’Leary, MPP; Megan Heffernan, MPH; Katherine Gelfand, BS; Rachel Kappel, MPH; Catharine Q. Fromknecht, BS

Downloaded from <http://journals.aphis.gov/>
WinYqpl/1c/H/D3/318

Topic: “Knowledge of Fresh Medical Graduates Regarding Medical Ethics and Professionalism in Bangladesh ”

a] Introductory Overview and Current Situation

b] Views of Teachers and Stakeholders

c] Steps to be Taken (Suggestions) for further Improvement

By

Department of Microbiology

Department of Neurology

Department of Ophthalmology

Date : 2nd June , 2025

Time : 08.00 am

Venue : Medical Education Unit (3rd Floor, College building, DMC)

All respected Faculties are cordially invited

Medical Education unit

Dhaka Medical College



Thank you