

WELCOME TO MEU'S PRESENTATION FOR THE MONTH OF MAY '25

Topic

“Social Determinants of Health In Undergraduate Curriculum”

a] Concepts of it in a community

b] Role of Medical Institutes In Addressing it

c] Ways To Achieve The Goal (Health Equity)

Participating Disciplines: Department of Community Medicine

Department of Endocrinology

Department of Thoracic Surgery



Date : 5th May , 2025

Time : 08.00 am

Venue : Medical Education Unit

(3rd Floor, College building, DMC)

All respected Faculties are cordially invited

Medical Education unit

Dhaka Medical College

SPEAKERS



DR. SHAH MD. EZAZ-UL HAQUE
MBBS,MPH (Epidemiology)
FCPS P1 (Community Medicine)
Department Of Community Medicine
Dhaka Medical College



DR. MD. FIROJ HOSSAIN
Assistant Professor
Department of Endocrine
Dhaka Medical College



DR. DEBASHIS DAS
Department of
Thoracic Surgery
Dhaka Medical College

Social Determinants of Health In MBBS Curriculum

(Concept of Social Determinants of Health in A Community)

Presented by

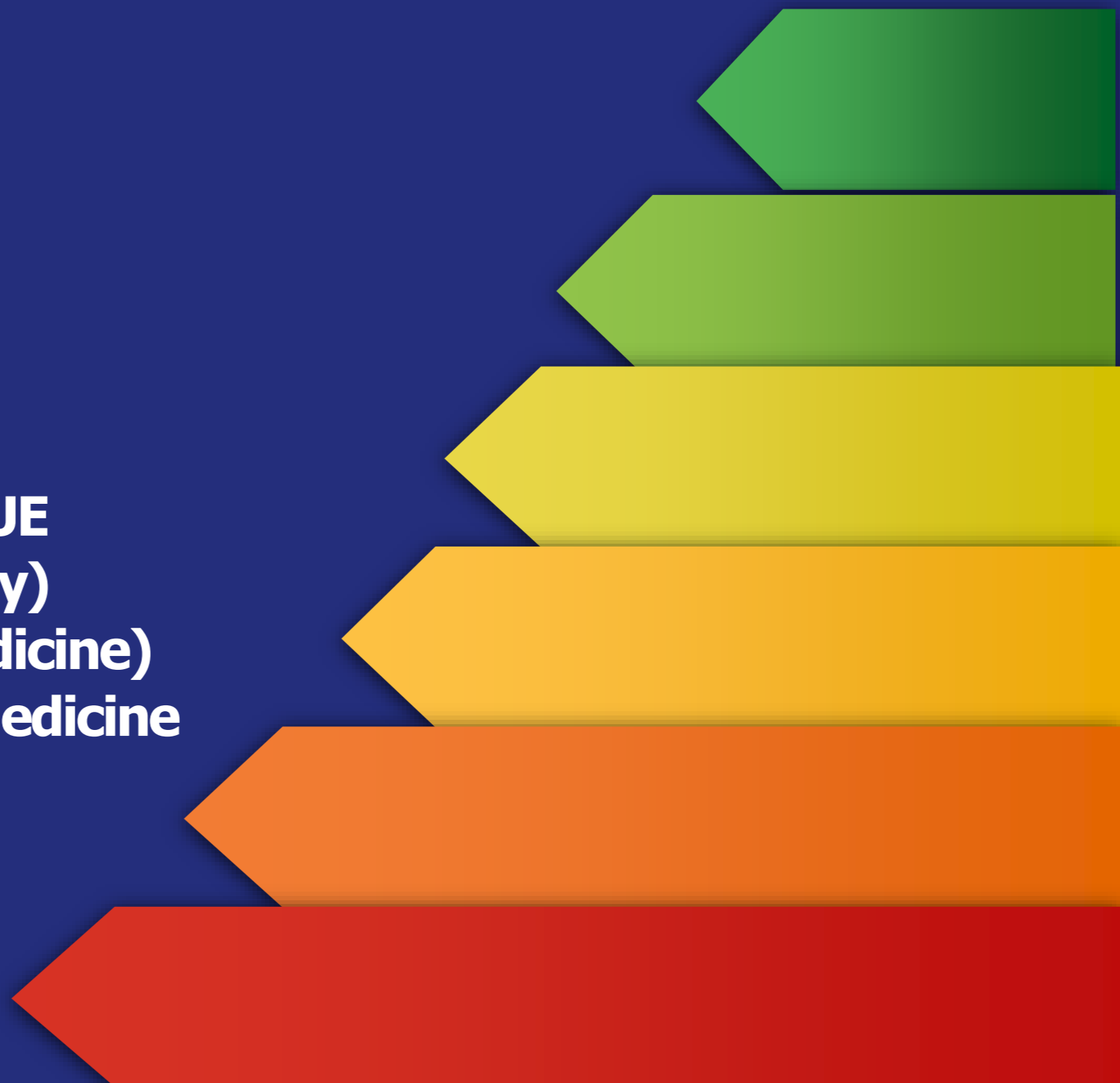
DR. SHAH MD. EZAZ-UL HAQUE

MBBS, MPH (Epidemiology)

FCPS P1 (Community Medicine)

Department Of Community Medicine

Dhaka Medical College



LEARNING OBJECTIVES



1

To explain the concepts of health and well-being

2

To recognize the responsibility of states to uphold the health of their population

3

To identify the socioeconomic, biological and behavioural factors that influence health

4

To explain the social determinants of health



DEFINITION OF HEALTH




Health is a state of complete physical, mental and social well-being, and not merely the absence of disease or infirmity (World Health Organization, 1948).

Health is an individual right and a social justice issue. It is also a public good.

Governments have a responsibility for the health of their peoples which can be fulfilled only by the provision of adequate health and social measures.

FACTORS DETERMINING HEALTH



Clinical care is less important than many people think whereas socioeconomic factors and the physical environment are quite influential on health and well-being.

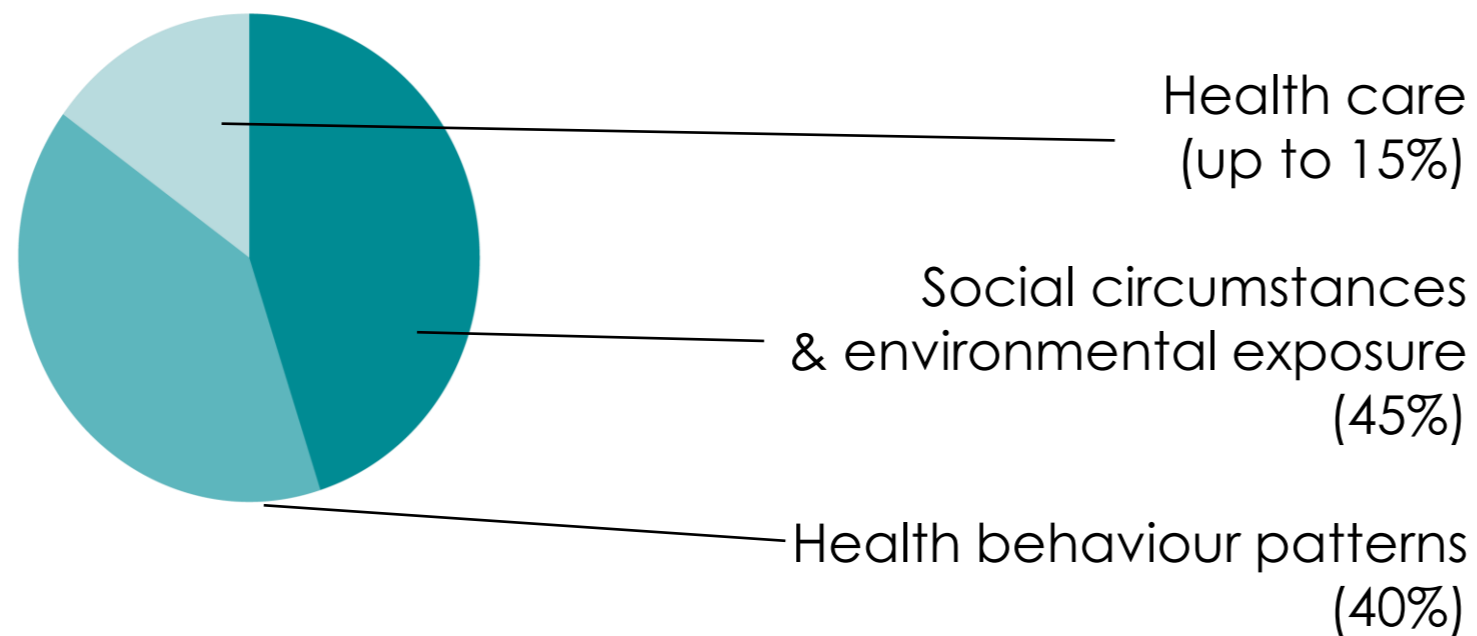
Genetic characteristics are also less significant than many people think.

Whether people are healthy or not, is determined by their circumstances and environment – the social, economic and environmental conditions which affect the health of the population.

WHY FRAME HEALTH IN TERMS OF SOCIETAL CONDITIONS?

IMPACT: 30 - 50% OR MORE

**Mc Giniss
et al (2002)**



**Canadian Institute
of Advanced
Research (2012)**

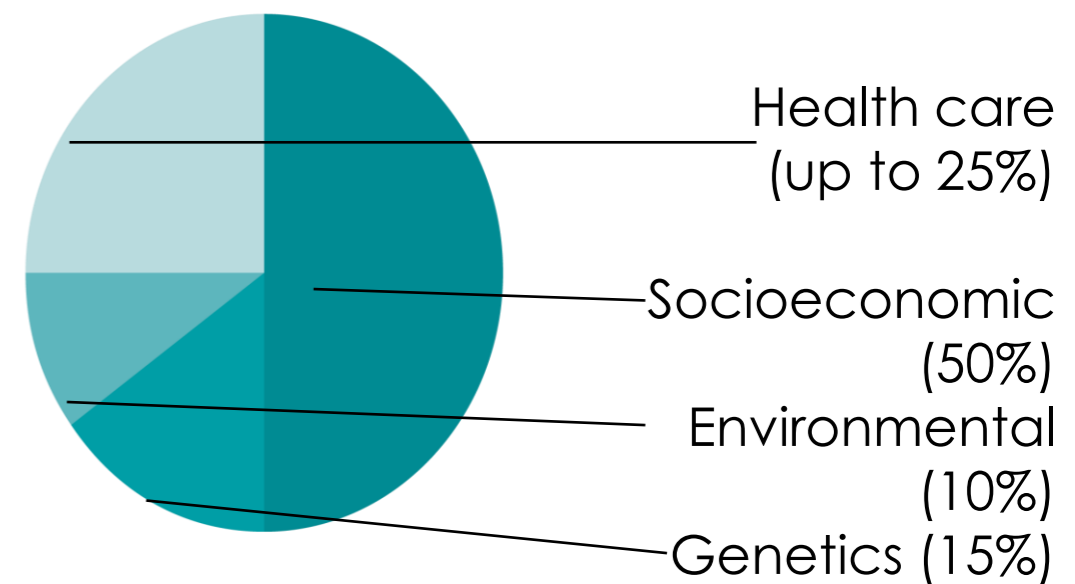




Figure: Estimates of the contribution of the main drivers of health status.

Source: Donkin, A., P. Goldblatt, J. Allen, V. Nathanson and M. Marmot (2017).
"Global action on the social determinants of health." BMJ Global Health.

WHAT ARE THE SOCIAL DETERMINANTS OF HEALTH?



The social determinants of health are the conditions in which people are born, grow, live, work and age. These circumstances are shaped by the distribution of money, power and resources at global, national and local levels.



The social determinants of health are mostly responsible for health inequities – the unfair and avoidable differences in health status seen within and between countries.



The social determinants of health are multi-layered and range from societal to individual factors.

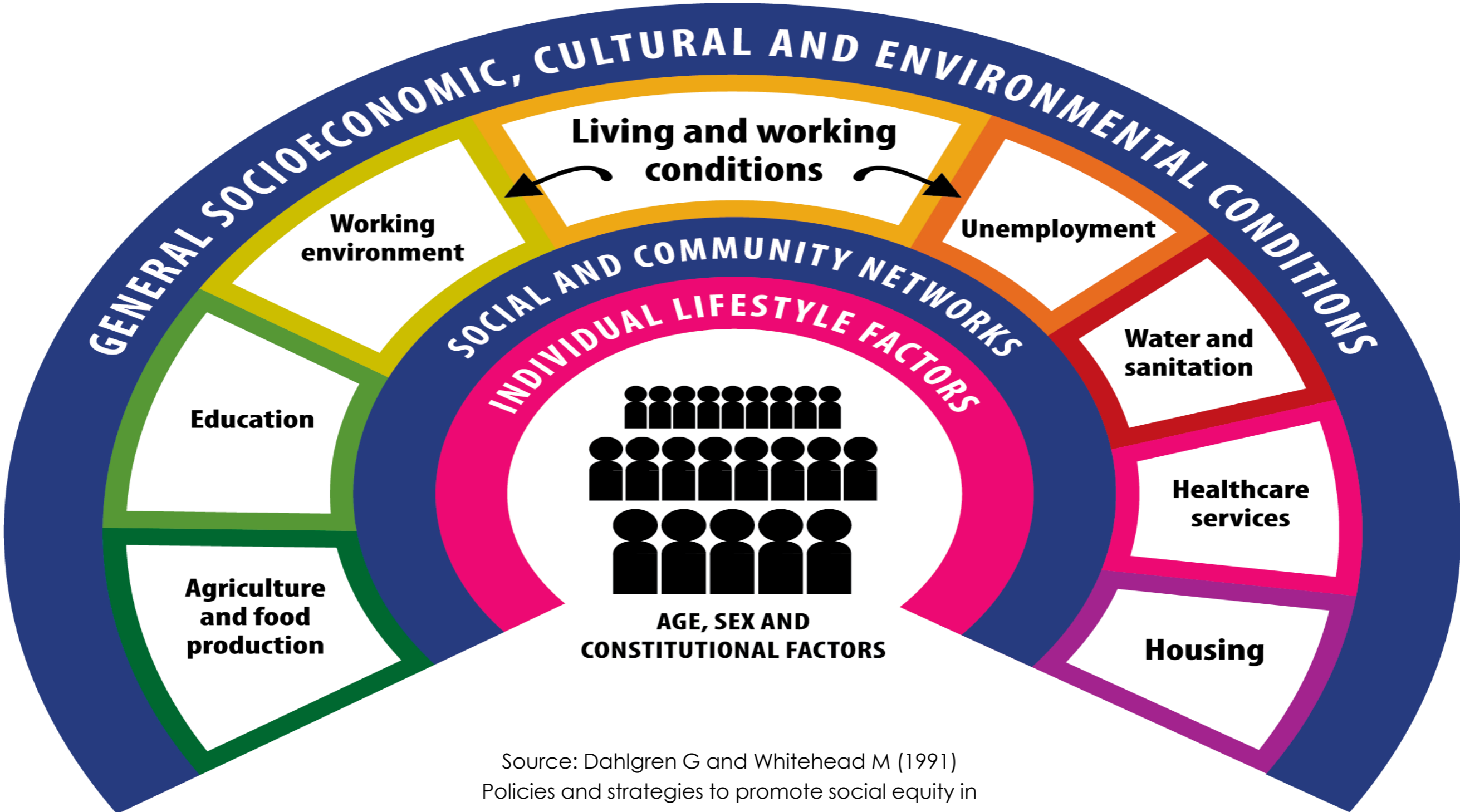
SOCIAL DETERMINANTS OF HEALTH CONCEPTUAL FRAMEWORKS

Dahlgren
& Whitehead
(1991)

Global
Commission
on SDH
(2008)

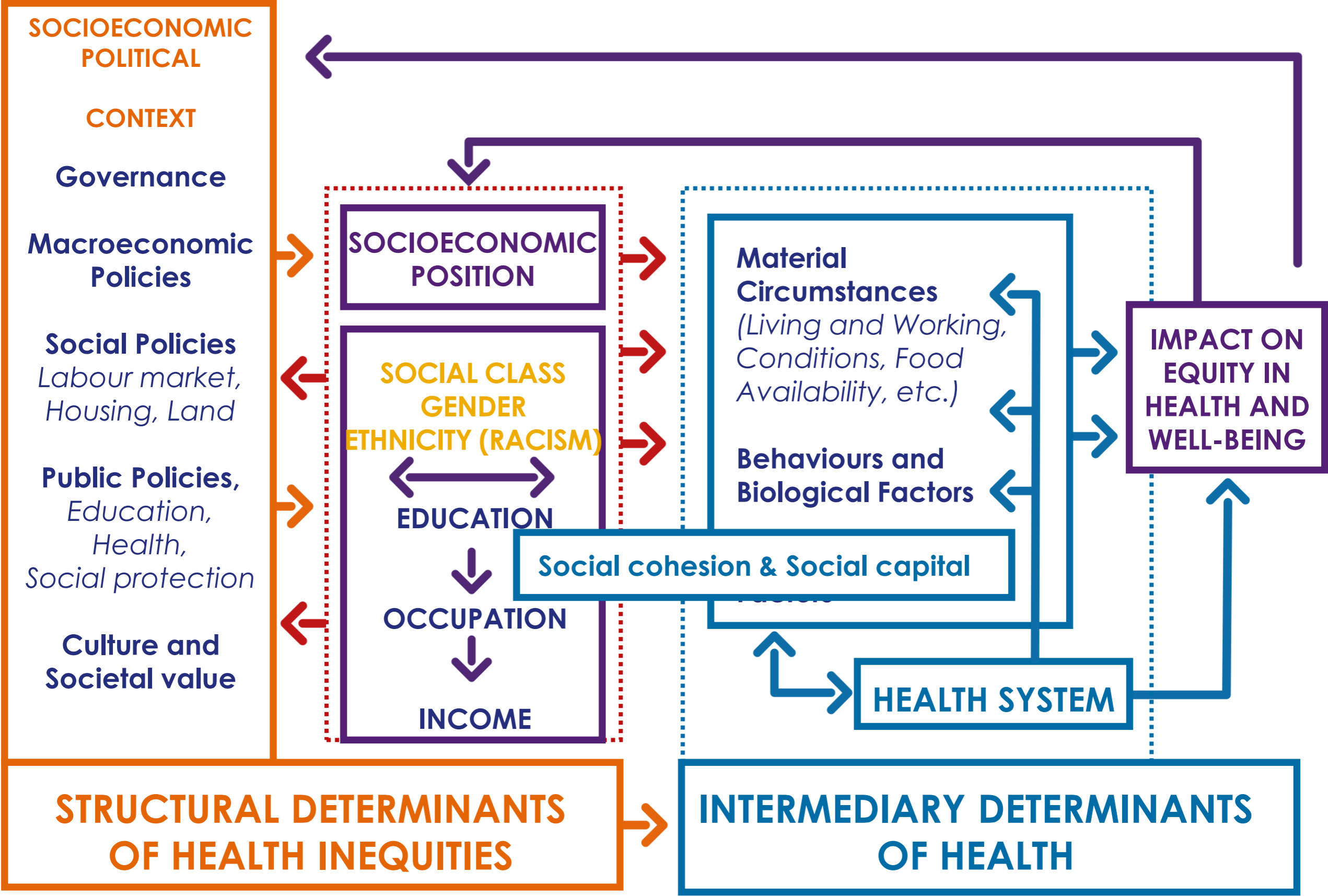
PAHO Equity
Commission
(2019)

THE SOCIAL DETERMINANTS OF HEALTH



Source: Dahlgren G and Whitehead M (1991) Policies and strategies to promote social equity in health. Stockholm, Institute of Future Studies.

GLOBAL COMMISSION ON SOCIAL DETERMINANTS OF HEALTH CONCEPTUAL FRAMEWORK (2008)



PAHO CONCEPTUAL FRAMEWORK ON SOCIAL DETERMINANTS OF HEALTH AND HEALTH EQUITY (2019)

INTERSECTIONALITY: SOCIAL AND ECONOMIC INEQUITIES,
GENDER, SEXUALITY, ETHNICITY, DISABILITY, MIGRATION

STRUCTURAL DRIVERS

Political, Social, Cultural
and Economic Structures

Natural Environment,
Land and Climate
Change

History and Legacy,
Ongoing Colonialism,
Structural Racism

CONDITIONS OF DAILY LIFE

Early Life and Education

Working Life

Older People

Income and Social
Protection

Violence

Environment and Housing

Health Systems

**HEALTH EQUITY
AND DIGNIFIED
LIFE**

TAKING ACTION

Governance
Human Rights



THANK

YOU