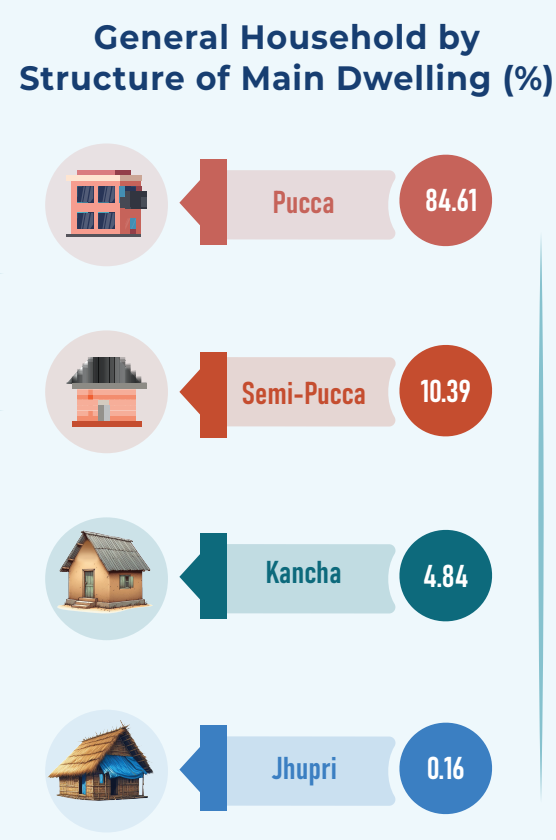
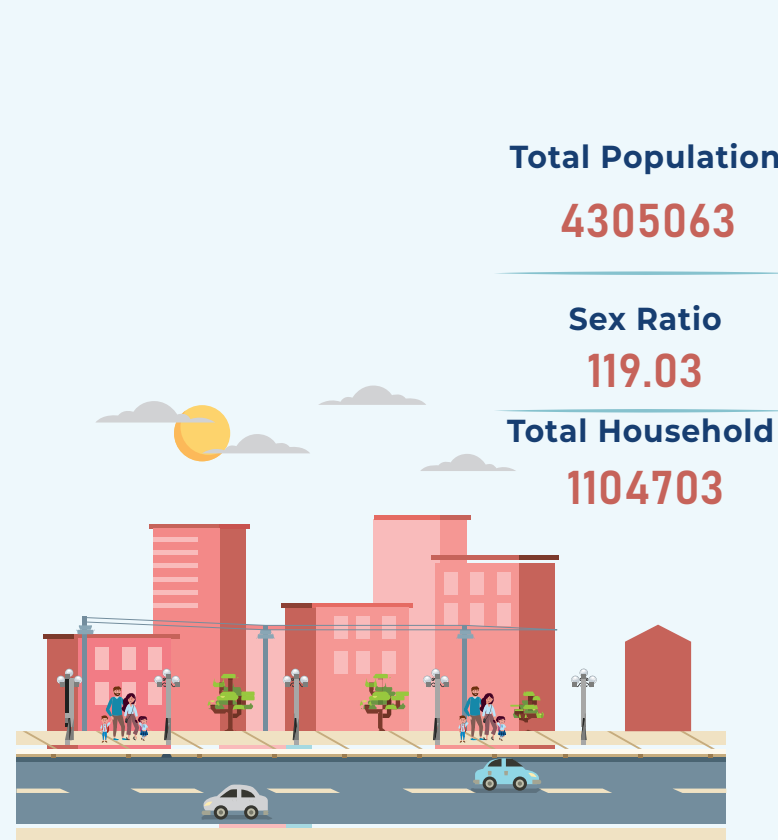
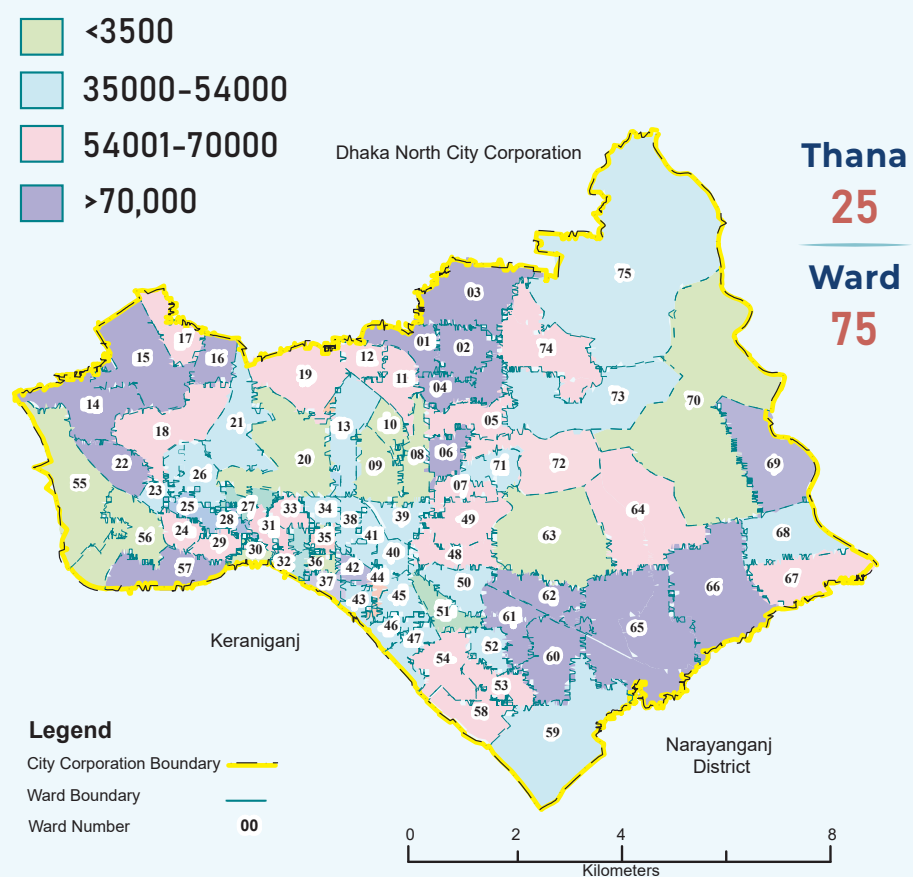




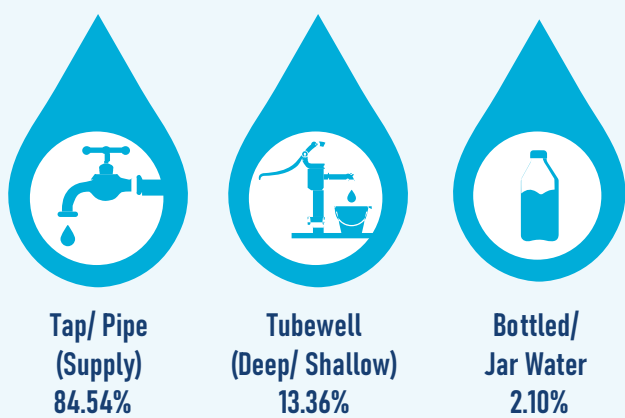
Key Features of Dhaka South City Corporation, 2022



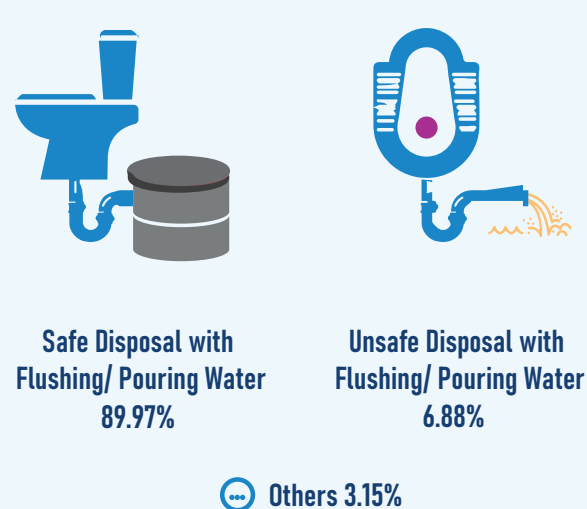
Average Size of General Household 3.85

General Household Facilities

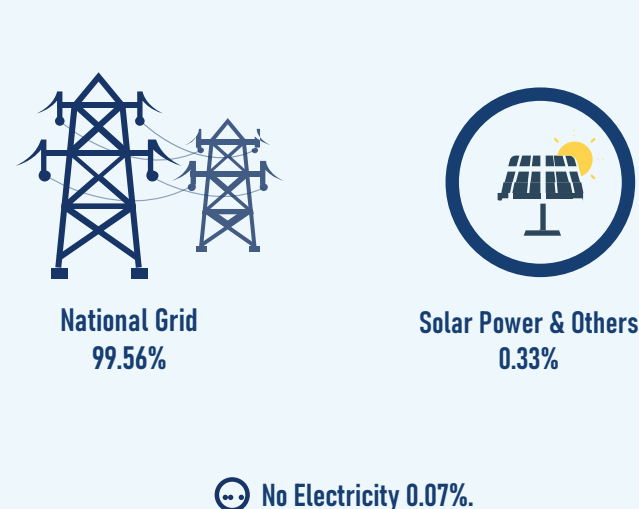
Main Source of Drinking Water



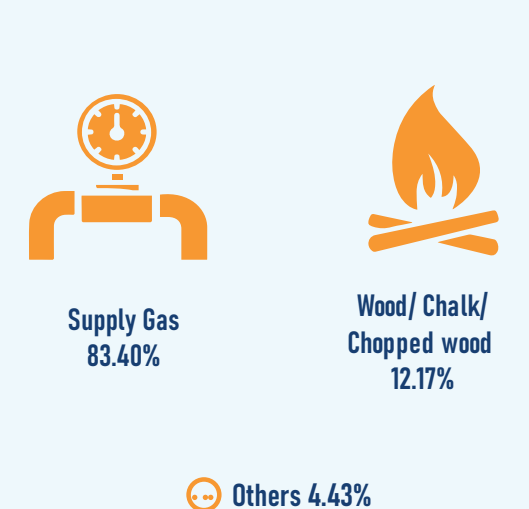
Toilet Facilities



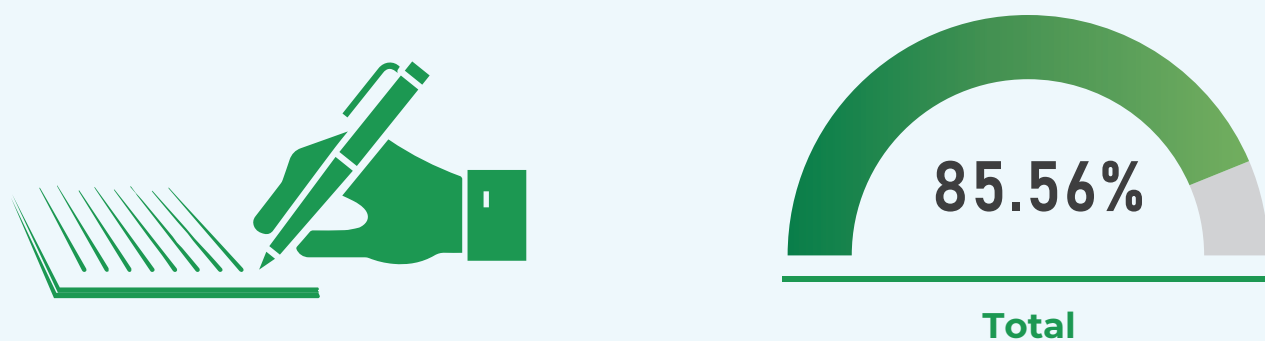
Main Source of Electricity



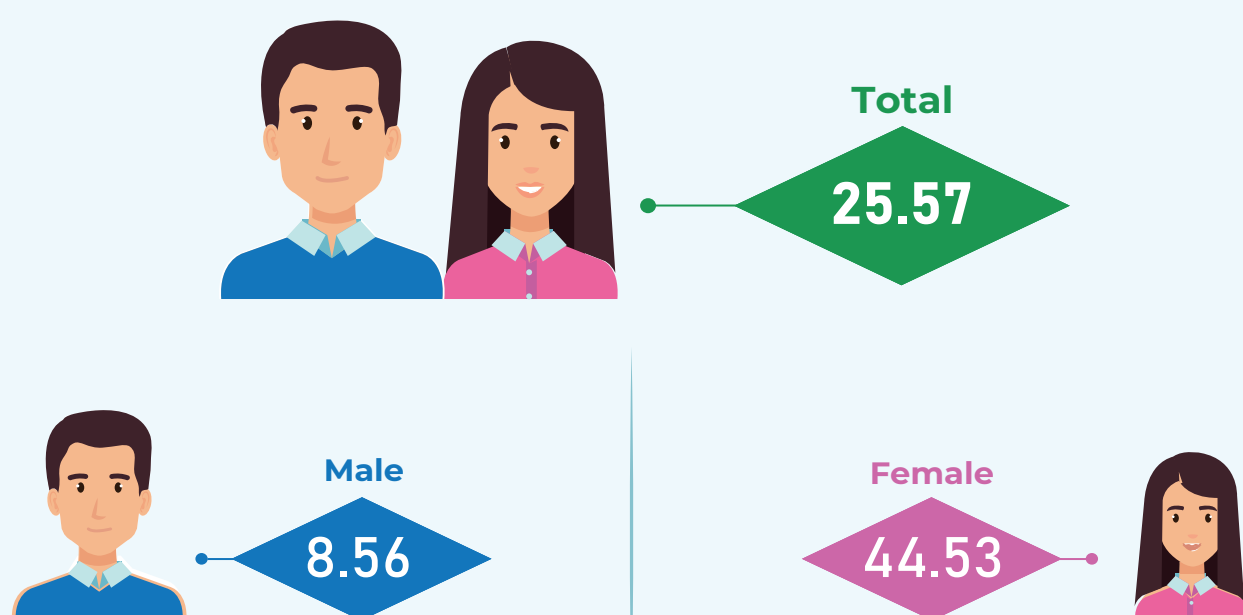
Main Source of Cooking Fuel



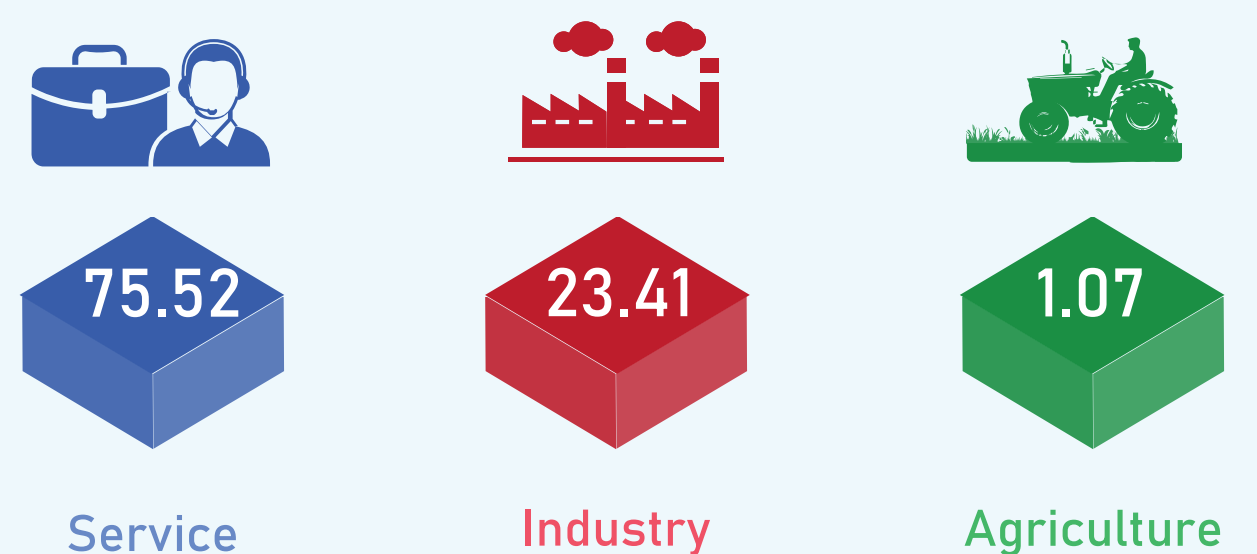
Literacy Rate (7 Years and Above)



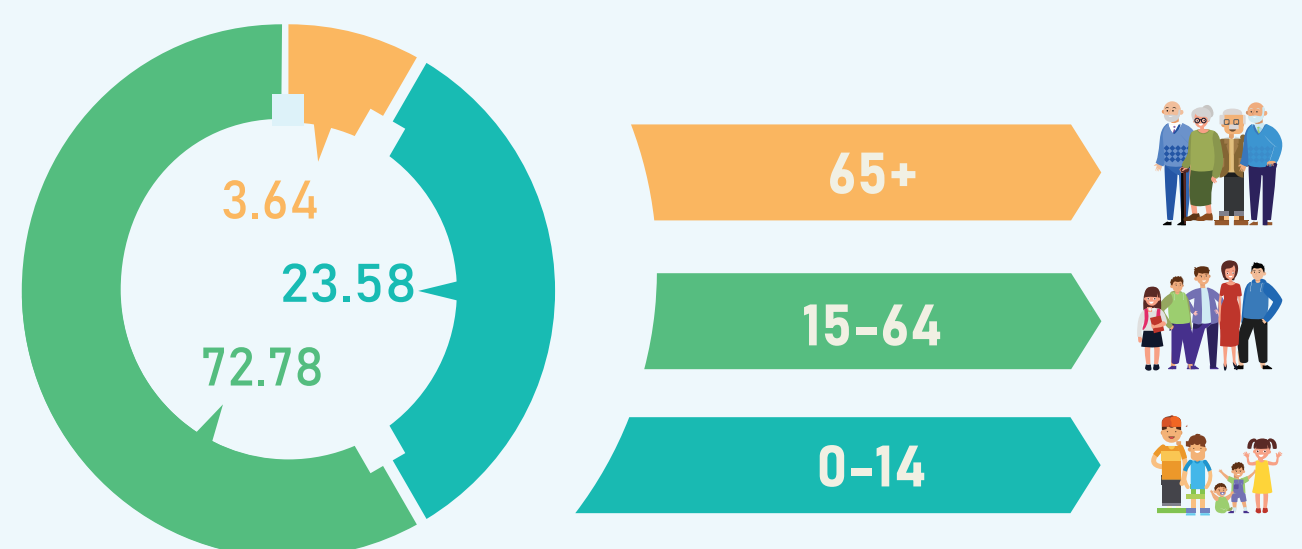
Population Aged 15-24 Years Not in Education, Employment or Training (NEET) (%)



Working Sector (%) (5 Years and Above)



Age Distribution (%)



Source: Population and Housing Census 2022



Population and Housing Census 2021 Project

Bangladesh Bureau of Statistics
Statistics and Informatics Division
Ministry of Planning

