



Welcome to the Presentation of e-Government Procurement (e-GP) System





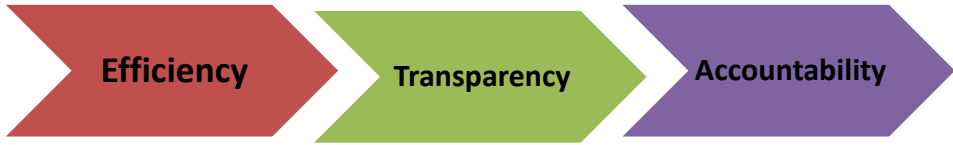
Presented By

**Proloy Kumar Goswami
Assistant Maintenance Engineer
Computer Wing
BBS, SID.**

Presentation Outline

- About e-GP System
- e-GP at a Glance
- Terms of e-GP
- Base of e-GP Guideline
- e-GP Requirements
- e-GP Admin
- Flowchart of e-GP
- TEC & TOC Formation
- Security System of e-GP
- Present Statistics of e-GP System
- Procurement Cell
- Present e-GP Status of BBS
- Limitations of Present e-GP System

About e-GP System

Developed by	:	
Owned and Operated by	:	
Provides on-line platform	:	
Supported by	:	 THE WORLD BANK
Ensures	:	

e-GP at a Glance



e-GP

Terms of e-GP

- ▶ PE- Procuring Entity
- ▶ HOPE- Head of Procuring Entity
- ▶ AU- Authorized User
- ▶ AO- Authorized Officer
- ▶ TEC- Tender Evaluation Committee
- ▶ TOC- Tender Opening Committee
- ▶ NOA- Notification of Award
- ▶ PA- Procuring Agency
- ▶ APP- Annual Procurement Plan

Base of e-GP Guidelines

- ▶ According to section 65(2) of Public Procurement Act, 2006 the Govt. of Bangladesh introduced a guideline named “Bangladesh e-Government Procurement Guidelines”.
- ▶ In the section 128 of Public Procurement Rules, 2008 also suggested to use e-GP System.
- ▶ “Bangladesh e-Government Procurement Guidelines” published on the Bangladesh Gazette on 1st February, 2011.

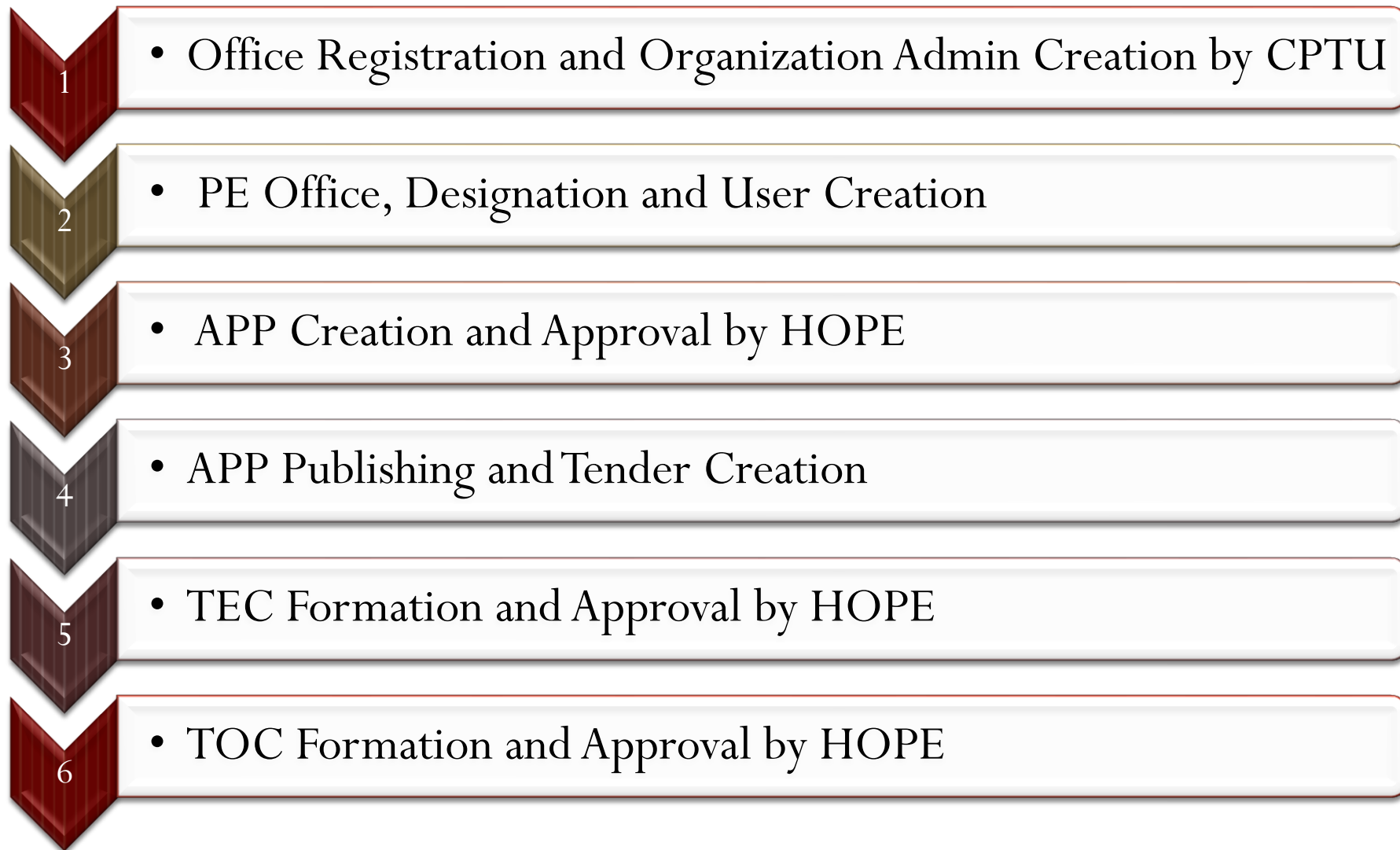
e-GP Requirements

- ▶ PC with Internet Connection
- ▶ Ensuring any of the following browsers installed in PC:
 - Internet Explorer 8.x
 - Internet Explorer 9.x
 - Internet Explorer 10.x
 - Mozilla Firefox 3.6x
 - Mozilla Firefox 13x
 - Mozilla Firefox 14x
 - Mozilla Firefox 29.x
- ▶ Users Registration
- ▶ Should have e-mail address, which will be used for log into e-GP Portal
- ▶ Need to be sincere about giving password, when log in; **if user gives 3 times wrong password then that user id will be blocked.**

e-GP Admin

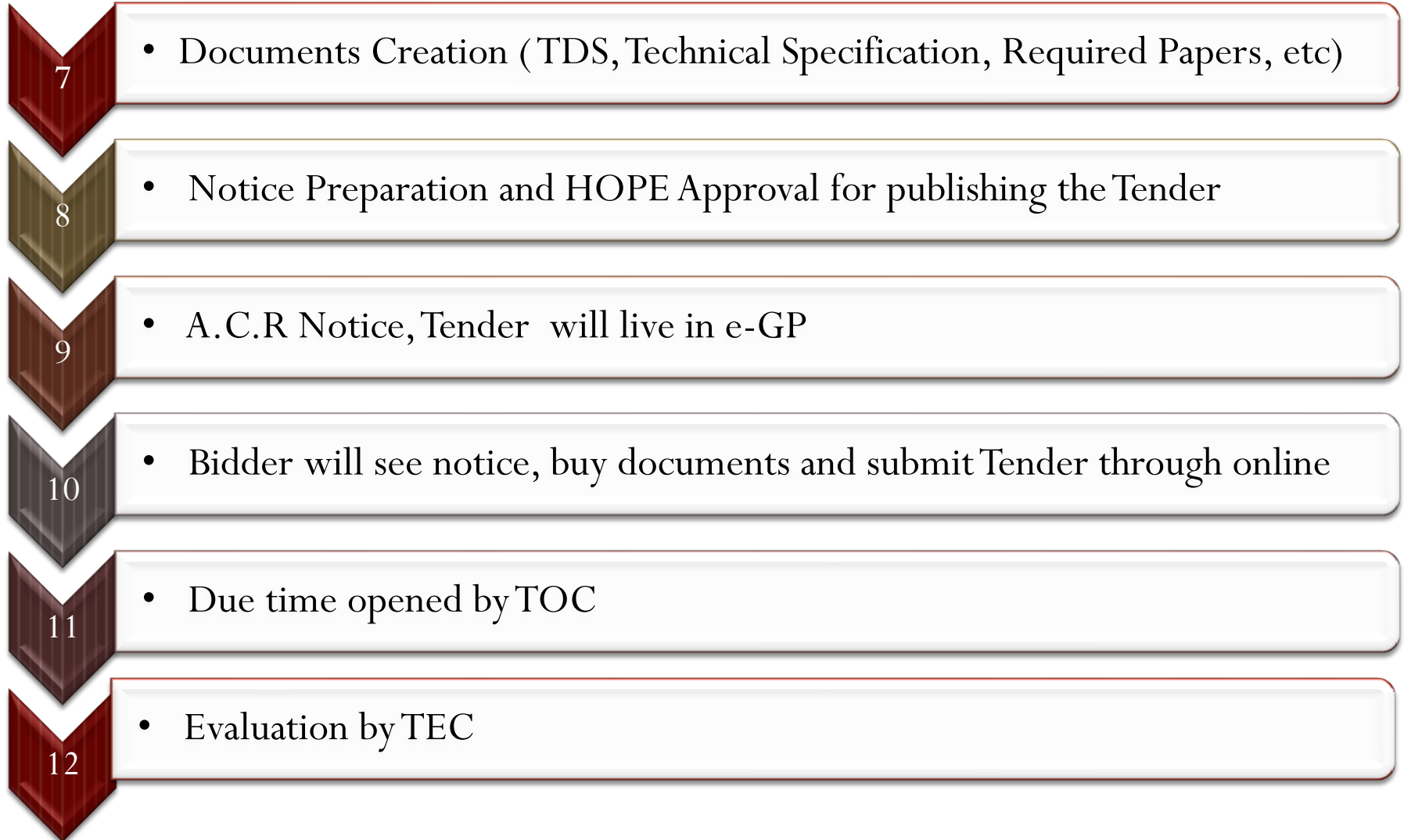
- ▶ Three types of Admin in e-GP System
 - System Admin:
 - CPTU, IMED control every things of e-GP System
 - Organization Admin:
 - Computer Wing for BBS, Creation of PE Offices and Designations
 - PE Admin:
 - Every PE Office has PE Admin for user creation and user activities selection

Flowchart of e-GP



Continue....

Flowchart of e-GP



Continue....

Flowchart of e-GP

13

- Evaluation approval by HOPE

14

- NOA Issuing by PE

15

- Bidder will accept NOA

16

- Contract Award to Bidder

17

- Releasing Tender Security

18

- Releasing Performance Security after warranty period

TEC & TOC Formation

- ▶ TEC is consisted with maximum three members.
- ▶ Two members must be selected from PE Office.
- ▶ Another member from other PE Office.
- ▶ Even TEC may be consisted with only two members from PE Office.

- ▶ TOC is consisted with two members.
- ▶ One member must be selected from PE Office.
- ▶ Another member must be selected from TEC.

Security System of e-GP

- ▶ After using three times wrong password, user will be blocked;
- ▶ When user will log in the system, then user will see last log in time;
- ▶ Submitted tenders are encrypted by Mega Hash Function;
- ▶ After opening members of TOC will decrypt;

Present Statistics of e-GP System

eTender/eProposals	:	49231 (upto 1 st June, 2016 at 6.20 PM)
eContracts	:	35015 (upto 1 st June, 2016 at 6.20 PM)
Registered PE offices	:	2441
Registered Banks	:	41
Registered Development Partners	:	6

Procurement Cell

Present e-GP Status of BBS

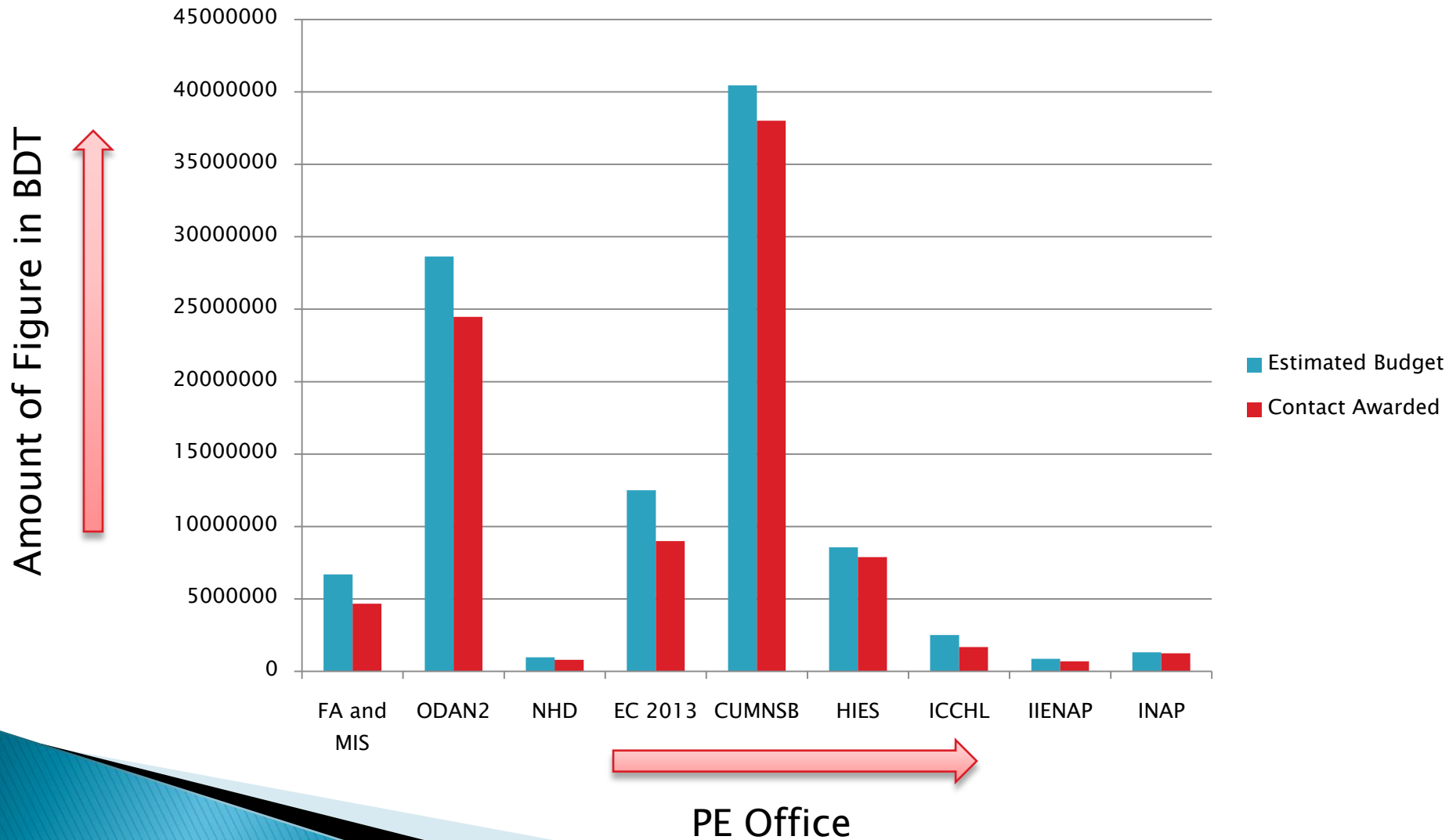
S/N	Item Name	Status
1	No. of PE Office	14 Nos.
2	Tender Invited	43 Nos.
3	Contract Awarded	31 Nos.
4	Processing and Live Tender	12 Nos.
5	Estimated Budget of total tender	132630517 BDT
6	Estimated Budget of contract awarded tender	102500003 BDT
7	Real Cost of contract awarded tender	88441170.94 BDT
8	Present Savings from Estimated Budget (6-7)	14058832.06 BDT

Continue.....

Present e-GP Status of BBS

S/N	PE Name	Contact Awarded	Estimated Budget (in BDT)	Contact Awarded (in BDT)	Savings Amount (in BDT)
1	FA and MIS	4	6700000	4675612.700	2024387.300
2	ODAN2	6	28640000	24479126.980	4160873.024
3	NHD	1	976510	789600.094	186909.906
4	EC 2013	1	12500000	8989963.578	3510036.422
5	CUMNSB	13	40452093	38017455.170	2434637.831
6	HIES	2	8554000	7881783.260	672216.740
7	ICCHL	1	2500000	1675867.510	824132.490
8	IIENAP	2	870000	690468.024	179531.976
9	INAP	1	1307400	1241293.626	66106.374
Total		31	102500003	88441170.942	14058832.063

Present e-GP Status of BBS



Limitations of Present e-GP System

- ▶ Service Procurement till not included;
- ▶ Updated browsers are not supported;
- ▶ Maximum tender limit 50 core;



THANKS