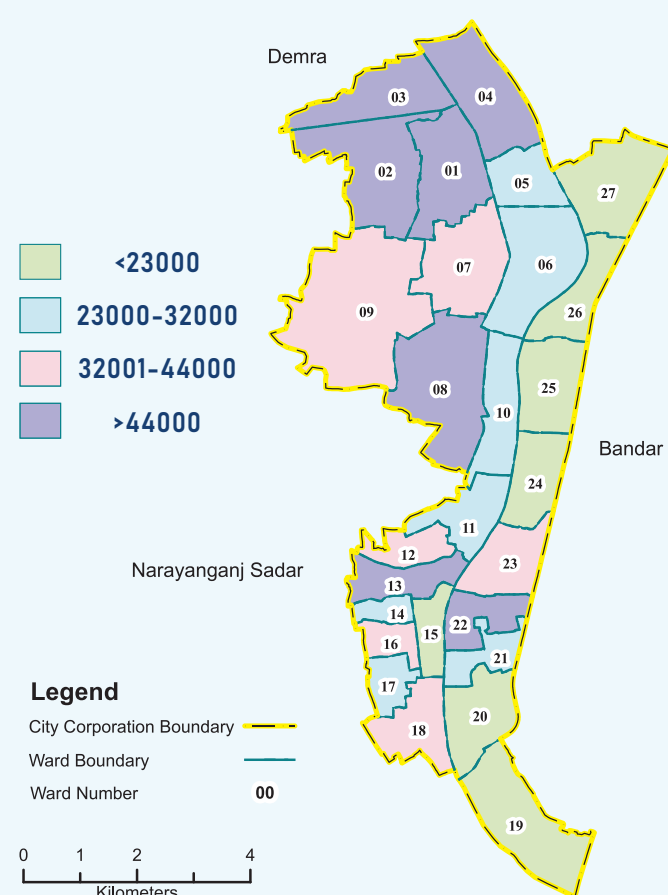




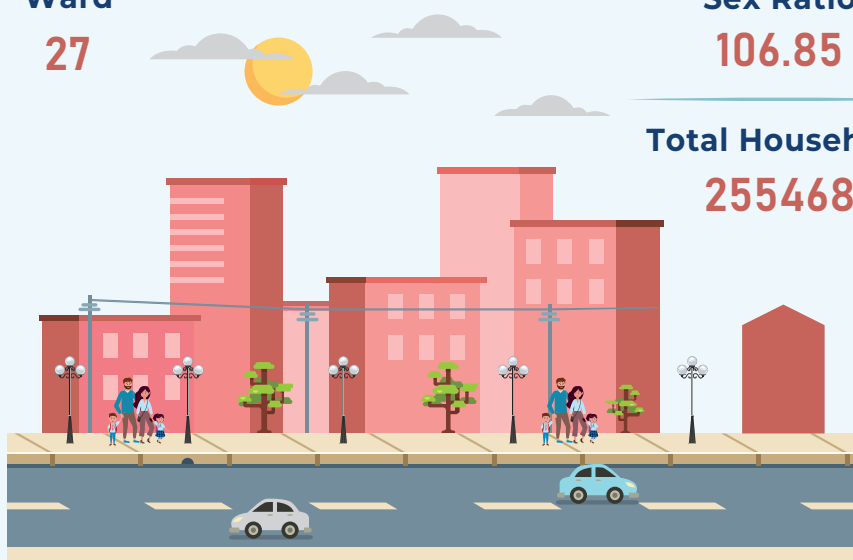
# Key Features of Narayanganj City Corporation, 2022



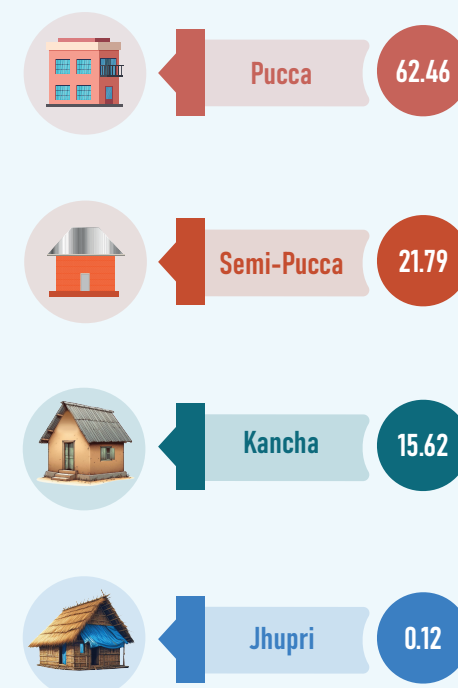
Population Density (13364 per sq. km)

Thana  
02

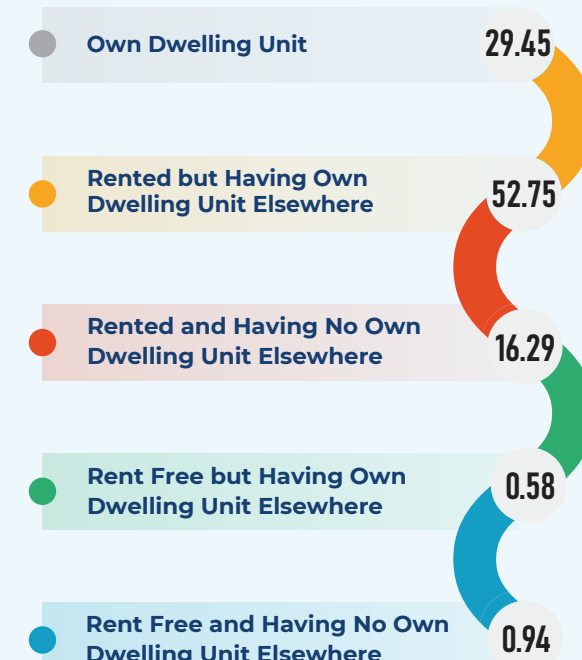
Ward  
27



## General Household by Structure of Main Dwelling (%)



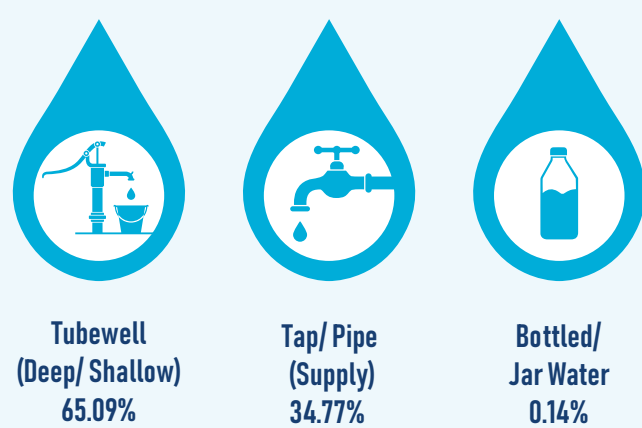
## Ownership of Dwelling Unit (%)



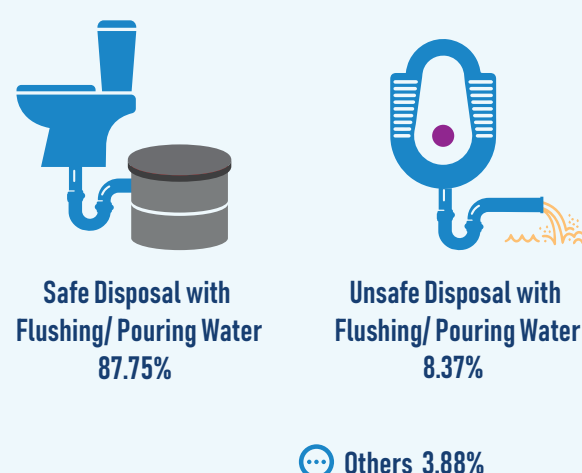
Average Size of General Household 3.74

## General Household Facilities

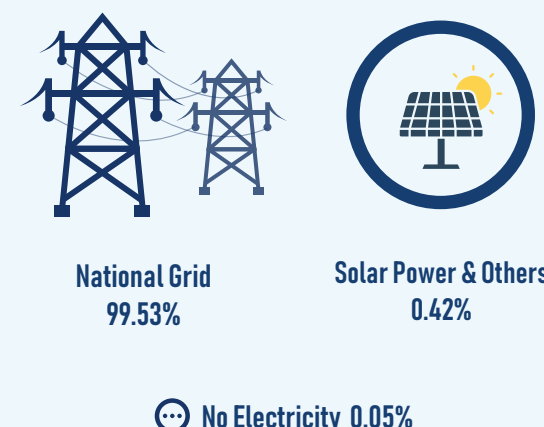
### Main Source of Drinking Water



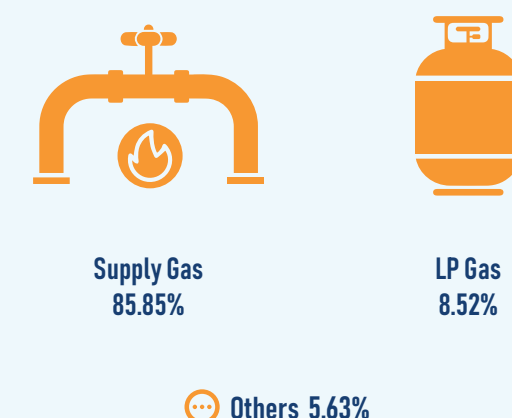
### Toilet Facilities



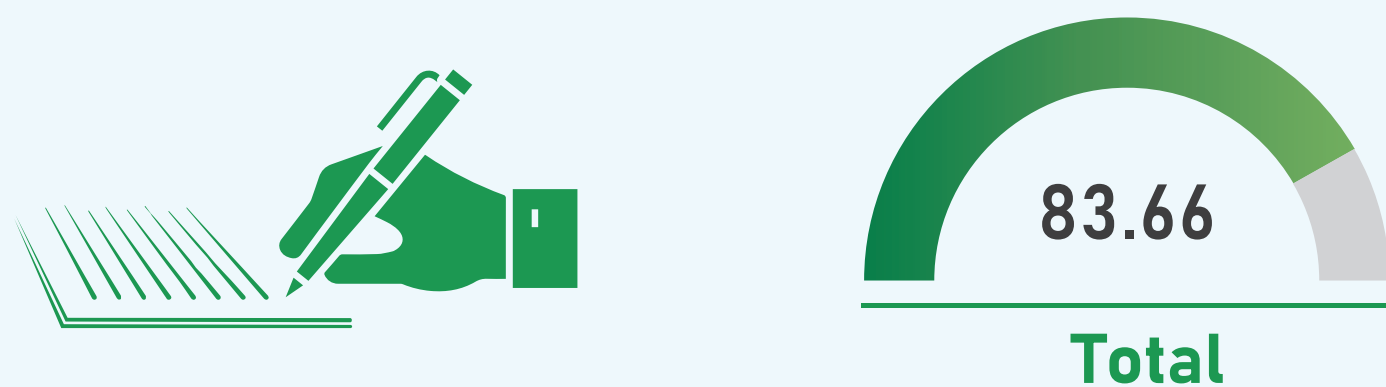
### Main Source of Electricity



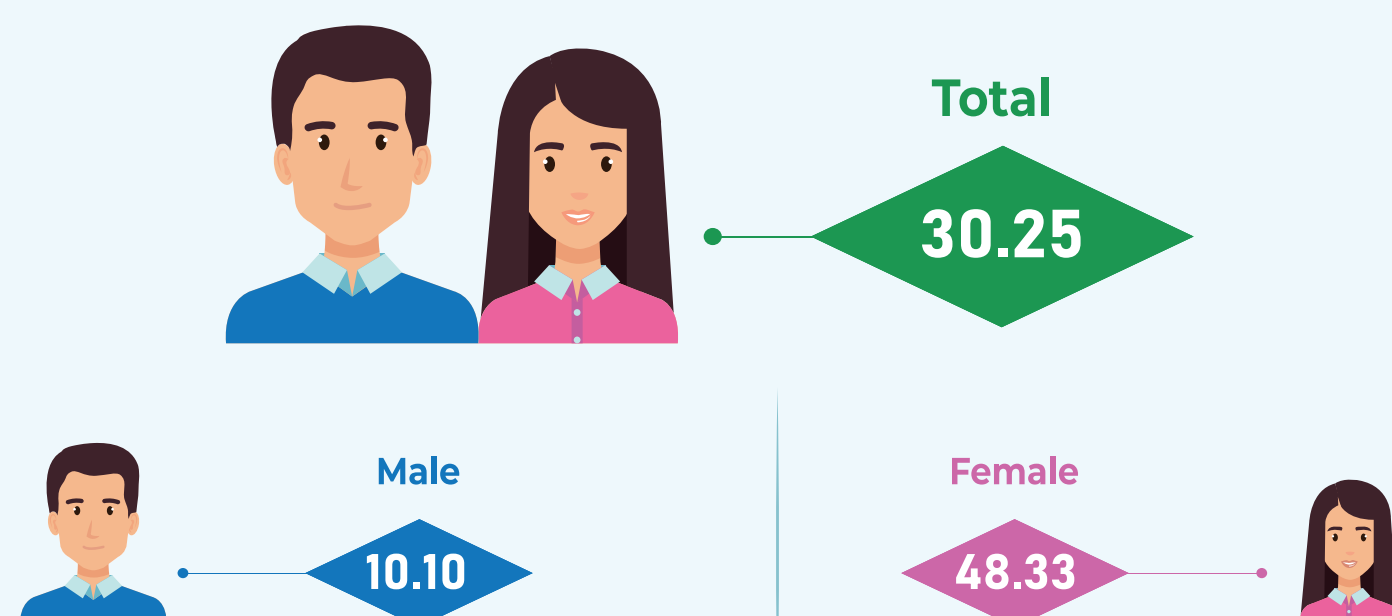
### Main Source of Cooking Fuel



## Literacy Rate (%) (7 Years and Above)



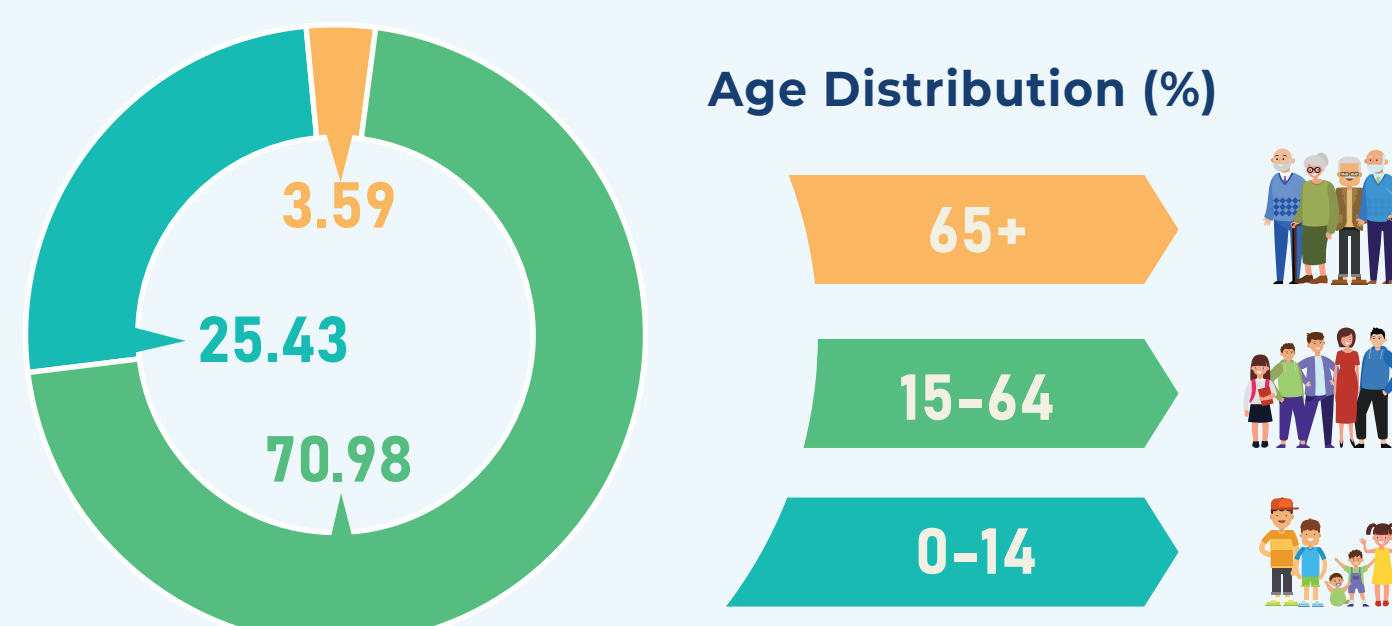
## Population Aged 15-24 Years Not in Education, Employment or Training (NEET) (%)



## Working Sector (%) (5 Years and Above)



## Age Distribution (%)



Source: Population and Housing Census 2022



Population and Housing Census 2021 Project  
Bangladesh Bureau of Statistics  
Statistics and Informatics Division  
Ministry of Planning

