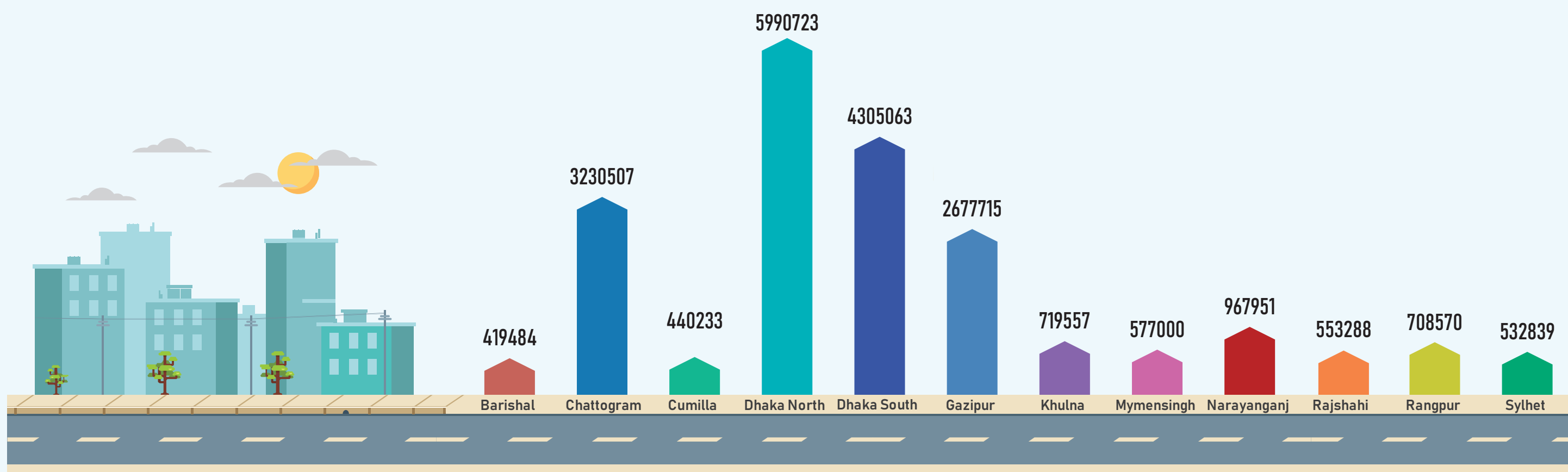


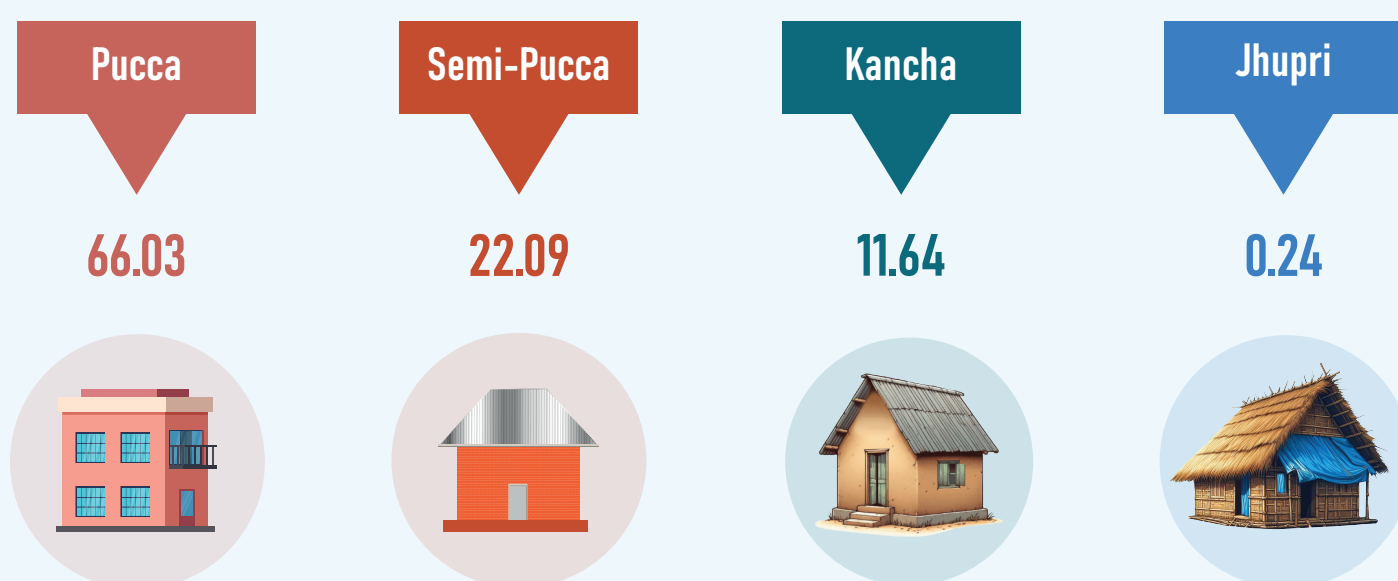


# Key Features of All City Corporation of Bangladesh, 2022

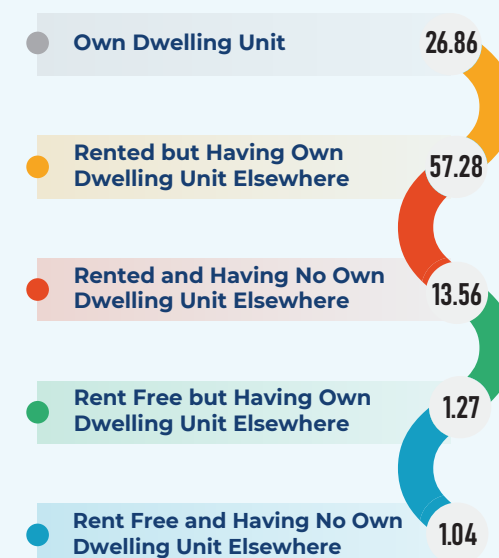
## Total Population



## General Household Structure (%)



## Ownership of Dwelling Unit (%)

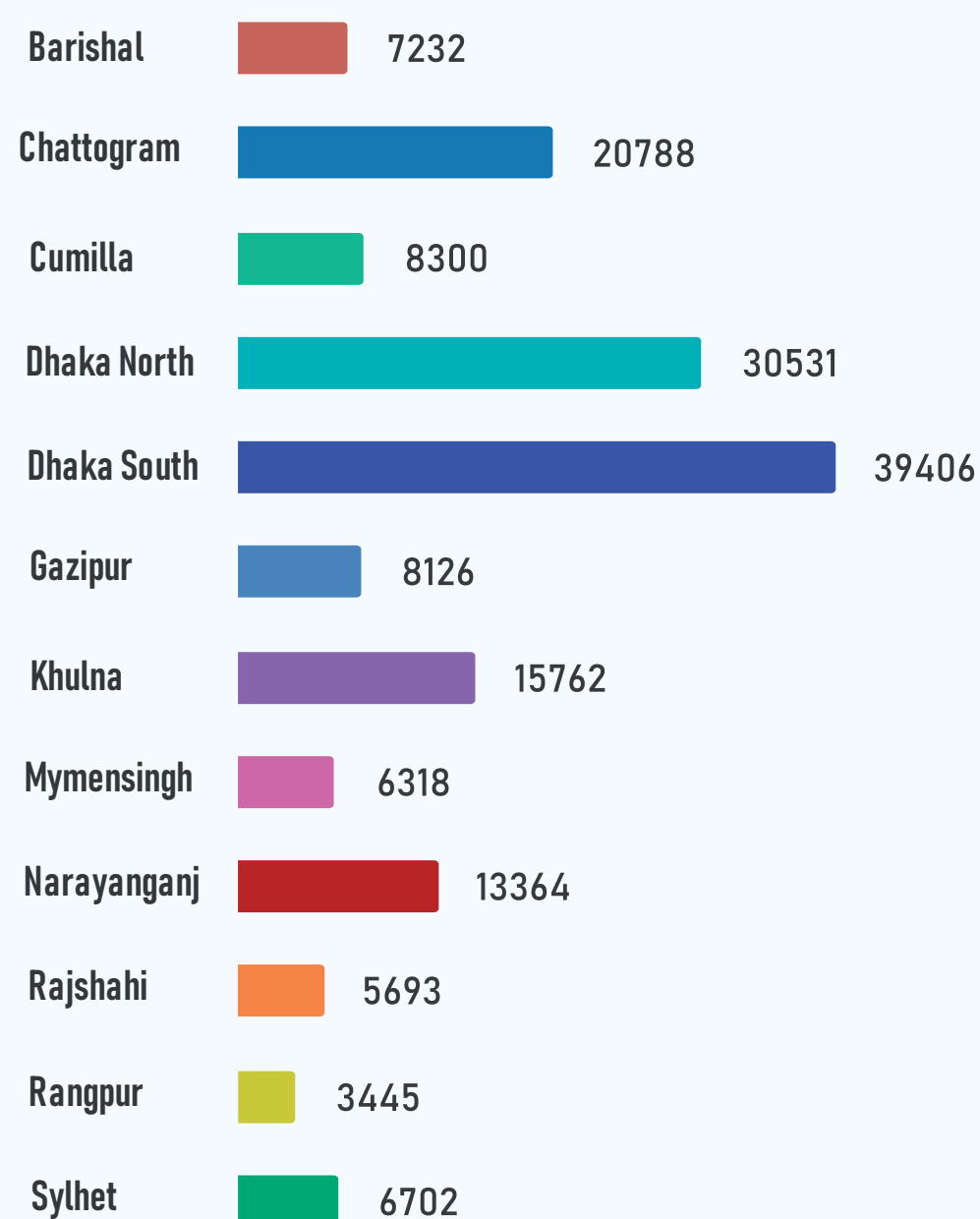


## General Household Size



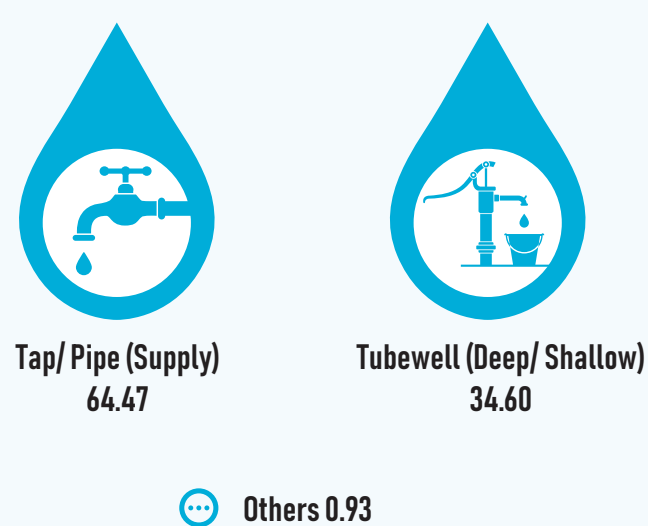
Total 3.71

## Population Density (Per Sq. Km)

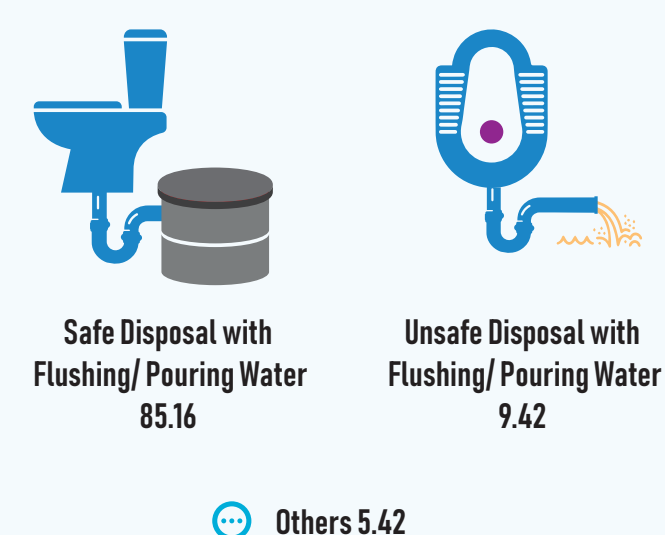


## General Household Facilities (%)

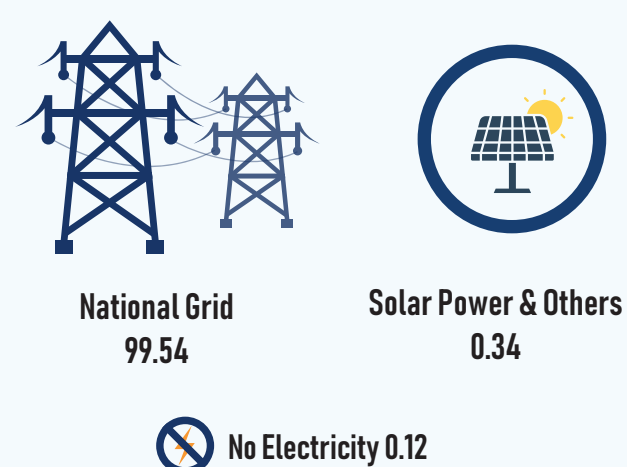
### Main Source of Drinking Water



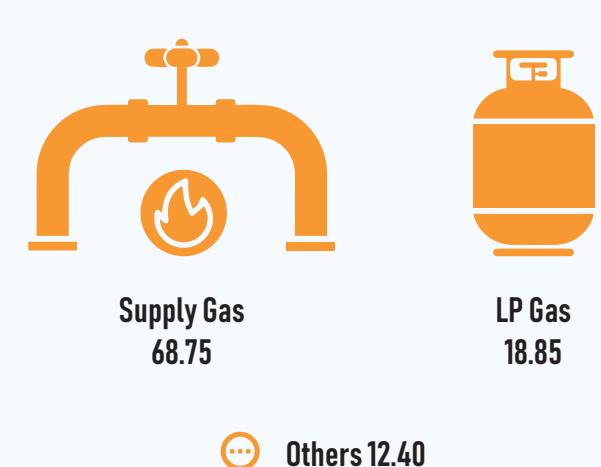
### Toilet Facilities



### Main Source of Electricity



### Main Source of Cooking Fuel



Source: Population and Housing Census 2022



**Population and Housing Census 2021 Project**  
Bangladesh Bureau of Statistics  
Statistics and Informatics Division  
Ministry of Planning

