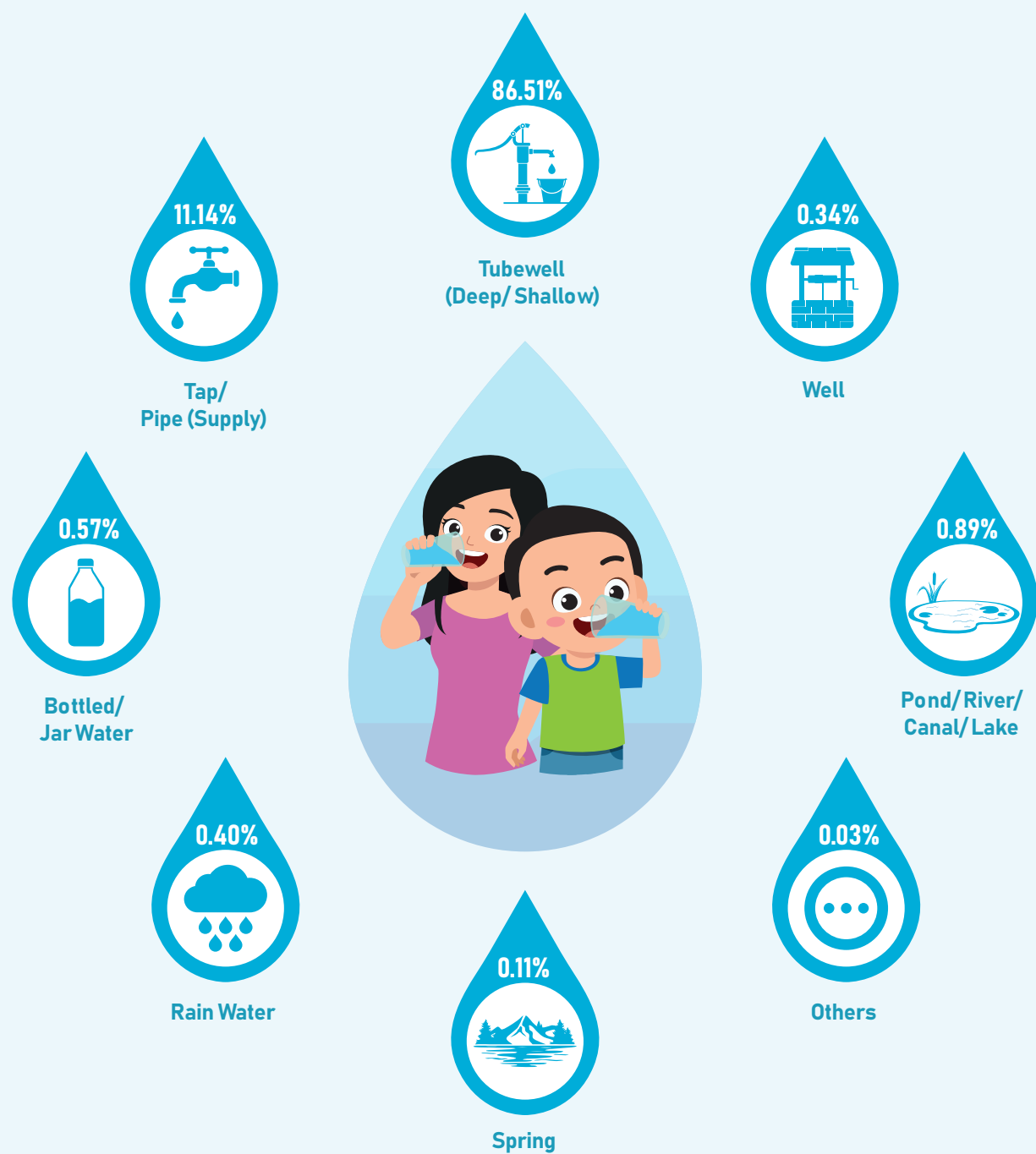




# Water and Sanitation Facilities of Bangladesh, 2022

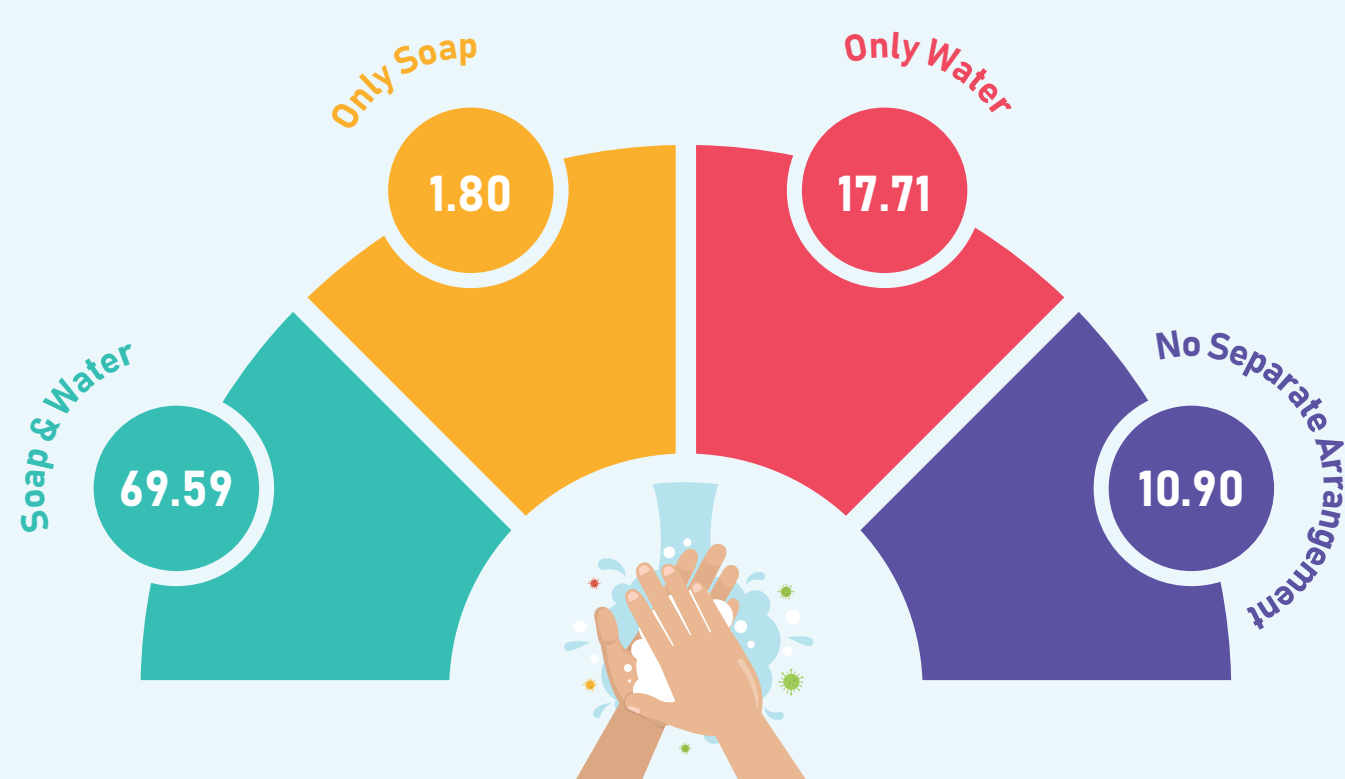
## Source of Drinking Water



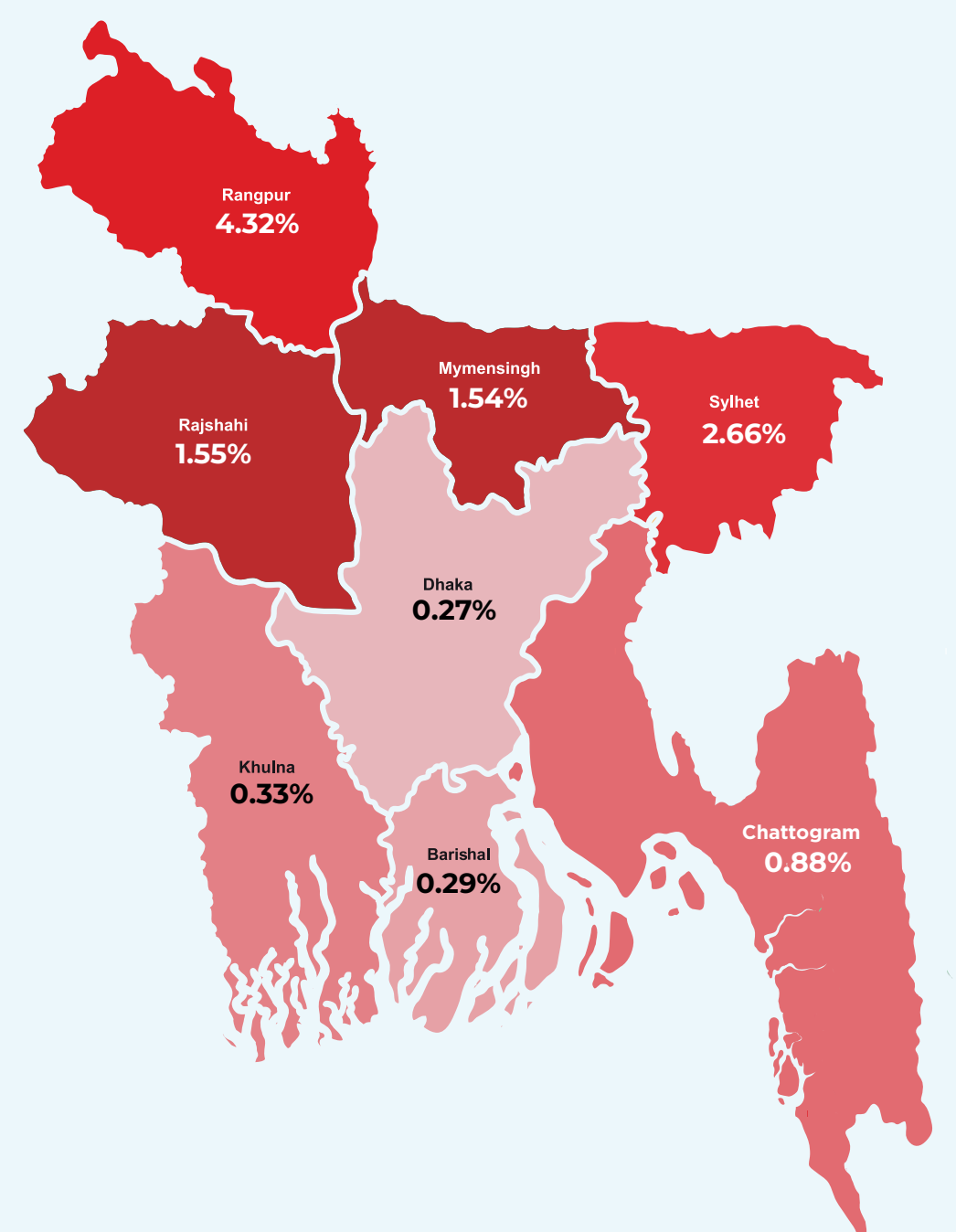
## Toilet Facilities (%)



## Separate Handwashing Facilities (%)



## Open Defecation/ No Latrine Available



Source: Population and Housing Census 2022



## Population and Housing Census 2021 Project

Bangladesh Bureau of Statistics  
Statistics and Informatics Division  
Ministry of Planning

